

# **1 6T Air-Cooled Switch Available Now**





## Overview

---

6T OSFP224 switch developed for advanced data center and AI infrastructures that require extreme bandwidth, efficient scaling, and high-performance fabric connectivity. 6TbE switch offering a hybrid cooled solution based on the 21-inch OCP ORv3 rack. a global leader in design, manufacturing, supply chain, and platform solutions for some of the world's most innovative companies, today announced the launch of two new 1.



## 1 6T Air-Cooled Switch Available Now

---



### Alpha Networks Adopts Latest Broadcom TH6 Chip for 1.6T Liquid-Cooled

In response, the 1.6T switch developed by Alpha Networks adopted a liquid-cooled solution that delivers more than 1.8 KW of cooling on each liquid-cooled board. The smaller footprint

### Alpha Networks launches 1.6 T liquid-cooled switch powered by

In response, the 1.6 T switch developed by Alpha Networks adopted a liquid-cooled solution that delivers more than 1.8 KW of cooling on each liquid-cooled board. The smaller footprint



### Hyundai 1.6T Engine Problems: Causes and Owner Insights

Discover common Hyundai 1.6T engine problems, their causes, recalls, and owner experiences to stay informed and proactive. Hidden engine problems and reliability issues most

### OSFP1600\_and\_OSFP-XD

The host footprint compatibility will simplify an upgrade path from 2x800G ports to a 1.6T port and allow for system implementers to leverage existing stack-up and routing techniques. In addition to the



### **Celestica Introduces New Family of 1.6TbE Data Center Switches to**

"The introduction of our new 1.6T switches marks a significant milestone for Celestica and our customers. The DS6000 and DS6001 represent a new era in high-performance networking,



### **Alpha : Unveils 1.6T Liquid-Cooled Switch at COMPUTEX 2025**

With high-performance chips now entering the kilowatt-class era, conventional air-cooling systems face significant limitations in terms of size, cost, efficiency, and energy consumption. Alpha



### **Celestica Unveils 1.6TbE Switches for AI/ML Data Centers**

By combining air and liquid cooling techniques, this 2U switch maximizes performance while improving energy efficiency and power utilization.





### Revolutionizing AI Data Centers: Celestica's 1.6TbE

As enterprises race to scale AI infrastructure, Celestica's new switches promise to meet the growing demand for high-density, energy-efficient,



### Source Photonics Unveil its Complete Solution of 1.6T and 800G

Source Photonics Unveil its Complete Solution of 1.6T and 800G PAM4 Transceiver Family Products at ECOC'24 in Frankfurt New 1.6T and 800G transceiver family enabled by 200G PAM4 EMLs paves

### Celestica DS6001 , 1.6T Cloud & Data Center Switch

Celestica DS6001 is a next-generation ultra-high-density 1.6T OSFP224 switch developed for advanced data center and AI infrastructures that require extreme



Motor protection controller



### Broadcom Tomahawk 6 102.4T 64-port 1.6TbE Switches

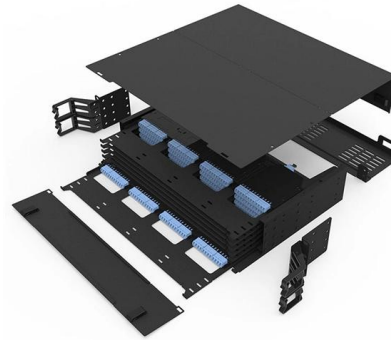
Instead, the "1.6T Data Center Switch" caught the team's eye. You can see that the Delta DC-90640 is a 3U switch with 2U dedicated mostly to the 64



## The Ultimate Guide to Classic Volkswagen Air-Cooled

The transition from air-cooled to water-cooled engines occurred for several reasons:

- o Emissions standards: As global emissions regulations became



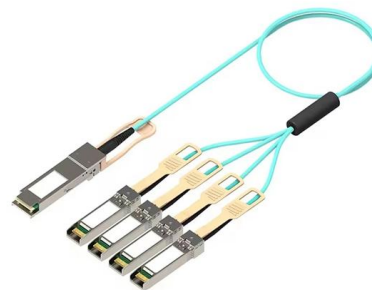
### Alpha Networks Unveils 1.6T Liquid-Cooled Switch at COMPUTEX

With high-performance chips now entering the kilowatt-class era, conventional air-cooling systems face significant limitations in terms of size, cost, efficiency, and energy consumption. Alpha



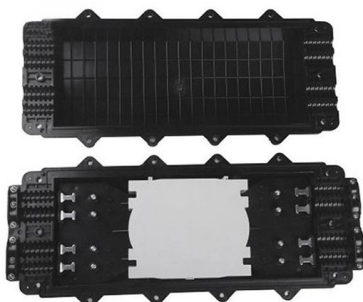
### Celestica Unveils 1.6TbE DS6000 and DS6001 Switches

Celestica, a world leader in design, manufacturing, supply chain, and platform solutions, announced two new 1.6TbE data center switches DS6000 and



### AirCooled Type 1 Oil Pressure Switch Prt# 021919081B

Engine Oil Pressure Switch 1 Blade Fits Audi 2009-2023 VW Volkswagen 2012-2023 \$13.13 Free delivery VW Air Cooled Engine Stock Oil





## The Race to 1.6T Is On -- Can Your Networks Keep Up?

Keysight's Charles Seifert discusses how 1.6T Ethernet is key to meeting the skyrocketing bandwidth demands of AI and data centers. Discover

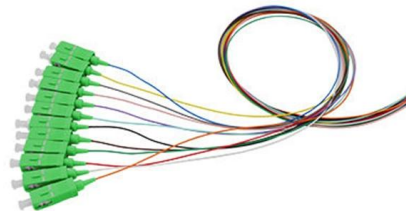


## Oil Pressure Switch Air Cooled VW ID

Classified ads, photos, shows, links, forums, and technical information for the Volkswagen automobile

## VW Air Cooled Performance Bug Engine Wheels Parts

Searching VW bug parts online? Visit the Aircooled Vintage Works shop. Air-cooled Volkswagen parts, VW bug engine swap, VW bug engine parts, VW air-cooled



## AirCooled Type 1 Ignition Switch W/ Key 72-79

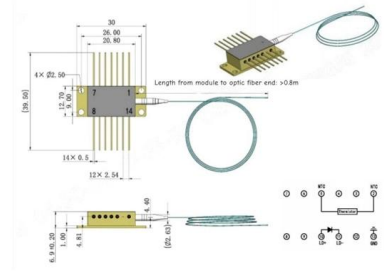
People who viewed this item also viewed AirCooled Type 1 Ignition Switch Cover Plate 72-73 \$15.00 Free delivery AirCooled Type 1 Ignition Switch L Code 67-70



### Celestica Launches 1.6TbE Data Center Switch Family

Celestica has introduced two new 1.6TbE data center switches--the DS6000 and DS6001--designed for AI and machine learning workloads requiring

Outline drawings  
mm



### Arrival of 1.6T Ethernet Marks the Beginning of a New

Celestica's DS6000 series delivers 102.4T switching capacity with 1.6TbE, 128 x 800GbE, 256 x 400GbE, and 512 x 200GbE ports, providing lower

### AirCooled Type-1 Ignition Switch 6 Wire Switch 71 Only

Beetle Ignition Switch

Original Used German Part

Fits 71 only Beetle (6 wire switch)

Sale is for the pictured switch



### Broadcom Tomahawk 6 102.4T 64-port 1.6TbE Switches

Instead, the "1.6T Data Center Switch" caught the team's eye. Delta DC 90640 Broadcom Tomahawk 6 102.4T Switch At Computex 2025 You can



### The 1.6T Era is Here: How Network Speeds Are Leaping

The 1.6T Arrival: Many in the industry expected 1.6T to be a topic for 2026 or beyond. But with Broadcom now shipping Tomahawk 6, the future has



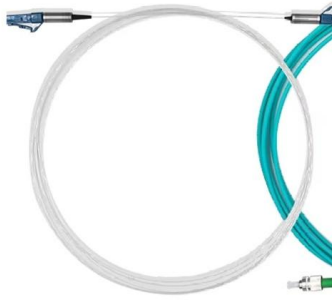
### The 102.4T Milestone: Celestica DS6000 and the Dawn of 1.6T

The Celestica 1.6T-based 'DS6000 Series' - with both an air-cooled and hybrid liquid cooled version - isn't just a step forward, it's a leap into a new era of high-performance networking.

### Alpha Networks switch supports up to 100,000 GPU

Alpha Networks Inc. announced the launch of its 1.6T liquid-cooled switch equipped with the Broadcom Tomahawk 6 chip to deliver up to 102.4 Tbps





### **AirCooled Type 1 Turn Signal Switch 62-65 Prt**

AirCooled Type 1 Turn Signal Switch These are a Reproduction of the Original These will fit 62-65 Type 1 These will also fit 66-67 Type 1

### **UfiSpace and GIGABYTE Unveil 1.6T Open Networking Switches**

Featuring state-of-the-art Broadcom chipsets, these switches offer capacities ranging from 200G to 1.6T. Integrated into GIGAPOD cluster computing platforms, the joint display highlights



### **Cisco Silicon One G300: 102.4 Tbps ASIC Powering the Next**

It offers 64 × 1.6T ports in a 100% liquid-cooled chassis and brings Cisco's carrier-grade IOS-XR feature set to the AI data center spine role -- particularly relevant for operators needing to bridge WAN and

## **Contact Us**

---

For datasheets, pricing, or custom high-speed optical interconnect solutions, please visit:  
<https://syropy.com.pl>