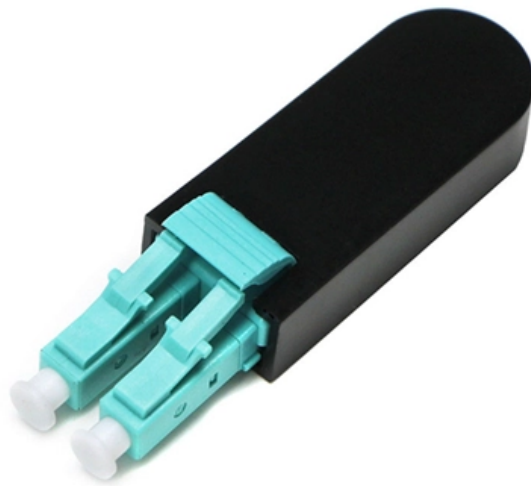


10kV Single Busbar Segmented Power Supply





10kV Single Busbar Segmented Power Supply



Types of Bus Arrangements in Substations - A

Learn different types of bus bar arrangement in substations, such as single bus with bus sectionalizer, double bus system, main and transfer bus

Different Bus-Bar Schemes in Electrical Substations -

This is a single bus system, with additional circuit breaker and isolators, making two different sections of bus, hence called a single bus system with bus sectionalizer.



Six common bus configurations in substations up to 345 kV

Comparison of bus configurations This technical article explains six most common bus configurations used for distribution, transmission, or switching

(PDF) Electrical design of 10kV workshop substation

The design of the distribution network has been optimized and coordinated to ensure the safety, quality, and reliability of power supply.



Enecell

KYN28-12 Armored removable AC metal-enclosed switchgear is suitable for 3.6~12kV three-phase AC 50Hz single busbar segmented power systems, Indoor



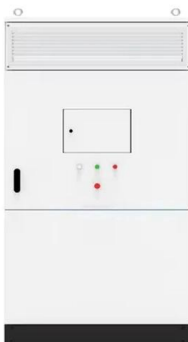
Power Busbar

Design a flexible and efficient power distribution system with Schneider Electric UK's innovative busbar systems. Explore Canalis busbars for a modular approach to



Technical Application Papers No.11 Guidelines to the construction

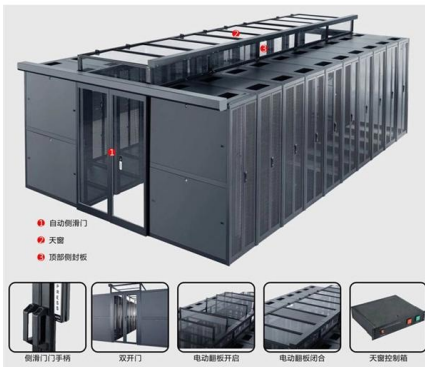
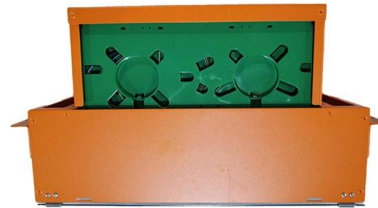
In each test, the incoming circuit and the busbars are lo-aded to their rated current and as many outgoing circuits in a group are loaded to their rated current as necessary to distribute the incoming





11kV Indoor & Outdoor panel

Switchgear Panels - 11kV Indoor & Outdoor panel
 Previous Next 11kV Indoor & Outdoor panel
 The 11kV Indoor VCB Switchgear Panels of voltage range 3.3kV to 11kV and current ratings from 630A to

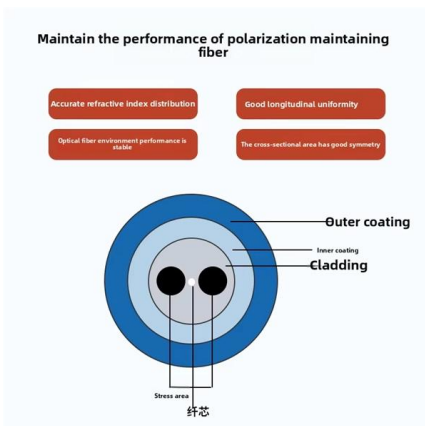


Types 8DA10 and 8DB10 up to 40.5 kV

Single-busbar switchgear 8DA10 and traction power supply switchgear 8DA11/12 is delivered in transport units comprising up to four panels. Double-busbar switchgear 8DB10 is delivered in

What is Electrical Bus Bar? Types, Advantages

Disadvantages of Single Bus-bar System In case of fault on the bus-bars, the supply to the whole system, including healthy feeders gets interrupted. It



Substation Components--Part 5: Busbar Configurations

Substation Components--Part 5: Busbar Configurations Here, we provide an overview of common substation busbar configurations--Single Bus,



Bus Bar Arrangement in Power Station , Single Bus Bar

If a fault occurs on the bus-bar, the continuity of supply to the circuit can be maintained by transferring it to the other Bus Bar Arrangement in Power Station.



Catalog Extract LV 10 · 04/2023

The BusbarCheck app assists you during installation. Energy data and power with plug-and-work: Our innovative powerline technology makes this possible for SIVACON 8PS busbar trunking systems -

Bus Bar Arrangement in Substation

In this article, we shall discuss some important bus-bars arrangements used for power stations and sub-stations. All the diagrams refer to 3-phase arrangement



CN217135161U

the utility model provides a low capacity transformer single bus segmentation distribution system passes through the busbar cabinet and connects two at least transformers in parallel



Busbar systems

RiLine busbar systems for individual switchgear and controlgear. Complete solutions up to 1600 A for AC or DC applications. 3-pole, tool-free mounting, short circuit



Different Bus-Bar Schemes in Electrical Substations -

So let's start with different bus-bar schemes or systems in an electrical substation.

The Analysis of Single Bus-Bar Connection and its

This paper analyzes single-bus connection from the reliability, flexibility and economy point of view, then outlined the typical single-bus wiring switching operation



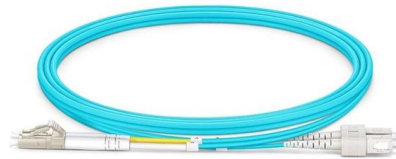
Wiring method of 110kV substation

The current approach for 110 kV substations primarily utilizes single bus segmented connection on the power side, with four transformers each connected to different buses (where the two middle



Power Distribution Solutions

Designed to optimize the power performance between the power shelf and busbar in a data rack application, allowing for efficient energy transfer while minimizing

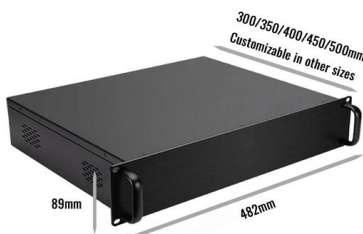
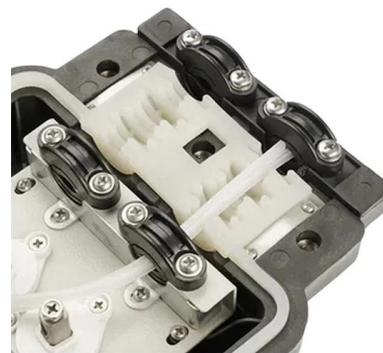


Substation Components--Part 5: Busbar Configurations

A single bus serves well in cost-sensitive projects, industrial plants with alternate feeders, or distribution substations where upstream redundancy

Standard cubicle configurations for a medium voltage

A direct incomer cubicle connects the incoming main supply onto the common horizontal busbar system of a metal enclosed switchgear arrangement,



Professional Power Solution: Busbar Segmentation Technology and

The core value of the busbar segmentation system lies in improving the reliability of power supply. Our KYN28 high-voltage switchgear and GCK low-voltage switchgear series products use



Substation Busbar System Overview

Substation Busbar System Overview The document discusses different types of busbar systems used in substations: 1) Single line diagrams provide a graphical



Medium Voltage Switchgear

Compact and cost-effective switchgear for standard applications in primary power distribution, built as a single busbar design. Available with dry air (SF6-free) up to 12 kV. Primary distribution distributes

"Busbar Systems"

8. General instructions on handling the double busbar modules CO3301-5R and CO3301-5S When necessary check whether your power supply has a clockwise rotary field using a phase sequence



How to Design Busbar Systems for Substations

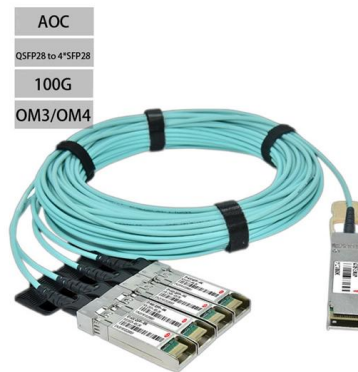
This guide provides a detailed technical description, calculations, design considerations, and best practices for designing busbar systems in

Types of Busbar Arrangements in Grid



Stations and

This arrangement offers a high degree of supply reliability and operation flexibility because each outgoing line and transformer can be switched



Catalog Extract LV 10 · 10/2022

Our busbar systems for electrical installations offer a particularly easy way of fitting distribution systems with electrotechnical components. The modular design saves space, while quick assembly contacts



8DA10-8DB10 , Siemens

Siemens 8DA10 single-bus and 8DB10 double-bus switchgear are arc-resistant, gas-insulated, medium-voltage solutions. Use these designs in limited spaces, harsh



Contact Us

For datasheets, pricing, or custom high-speed optical interconnect solutions, please visit:
<https://syropy.com.pl>