

130 beam splitter





130 beam splitter



1550nm Polarization Beam Splitter-Ruik Technology

Ruik's Polarization Beam Splitter is designed to divide one beam of any polarization into the two beams of the polarization vertical to each. The optical route is from

Optical Beamsplitters

Our plate beamsplitters have a coated front surface that determines the beam splitting ratio while the back surface is wedged and AR coated in order to



Beam Splitter Selection Guide

Our beam splitters are made from high grade glass material with laser grade surface flatness & surface quality for tighter tolerance on the splitting ratio.

VA-CB-1300 Variable Beam Splitter

Newport's VA-CB series of variable beam splitters provide continuous beam splitting or attenuation for CW lasers at specific wavelengths. The VA-CB series is



Optical Beamsplitters , Beamsplitter Selection , Edmund

Beamsplitters are optical components used to split input light into two separate parts. Beamsplitters are common components in laser or illumination systems.

Beam splitter

The beam splitter is an essential optical component that allows an incident light beam to be split into two or more partial beams. By using high-quality dielectric coatings on optical substrates, the beam



Polarizing Beam Splitter & Polarized Beam Splitter

Coherent Telecommunication Systems: The Polarization Beam Splitter seamlessly integrates into coherent telecommunication systems to achieve reliable





Zeiss Slit Lamp Beam Splitter SL-120 -- New , DEC

The DEC-Z120V is a precision slit lamp beam splitter engineered for



Femtoline Laser Beamsplitters

EKSMA OPTICS offers laser beamsplitters of UV grade Fused Silica. The sizes of laser beamsplitters are: 12.7*3 mm, 25.4*3 mm, 50.8*8 mm.

Carl Zeiss 50/100 Beam Splitter w/ 10x Observation

Carl Zeiss 50/100 Beam Splitter w/ 10x Observation Tube for Zeiss SL 120 & 130 Eyes Equipment (489) 100% positive



New Ultra-Wide Range FTIR Beamsplitter from THz to NIR

We present the world's first ultra-wide range FTIR beamsplitter with unique spectroscopic features. It allows to access the spectral range from 10cm-1



Beam Splitters - optical power splitter, beamsplitter, thin

Beam splitters are devices for splitting a laser beam into two or more beams. There are different types, including polarizing and non-polarizing versions.



Fiber-Based Polarization Beam Combiners/Splitters, 1

1 m of $\text{Ø}900 \mu\text{m}$ Jacketed Fiber on Each Leg
Choose from FC/PC or FC/APC Connectors
Thorlabs' Single Mode Fiber-Based Polarization Beam Combiners

EM-BP06ZS-DP Dual-Port Beam Splitter for Zeiss

The EM-BP06ZS-DP is a state-of-the-art optical accessory tailored for Zeiss SL120 and SL130 slit lamps. With its dual-port functionality and high-precision side



Integrated Beam Splitter and Camera Adapter for Zeiss

This digital imaging module & integrated beam splitter and camera adapter is designed for Zeiss SL-120 & Zeiss SL-130 Slit lamp &

Cube Beamsplitter



Beam splitters are common components in laser or illumination systems. Beamsplitters are also ideal for fluorescence applications, optical interferometry,



Beamsplitter lenses

When integrated into specialised lenses, the beam splitter divides the incoming light into two paths: one beam illuminates the object, while the other is used for image

EM-BP11ZV-SP Single-Port Beam Splitter for Zeiss

The EM-BP11ZV-SP is an advanced single-port beam splitter designed for Zeiss SL120 and SL130 slit lamps. With its vertical mount configuration, it provides



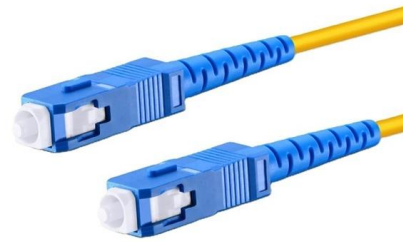
Zeiss Slit Lamp Beam Splitter SL-120 -- New , DEC

Why Practices Choose This Slit Lamp Beam Splitter Kit Zeiss SL-120 and SL-130 compatibility -- precision-engineered single-port optical splitter fits the Zeiss



Digital Imaging Solution for Zeiss SL-120/ SL-130 Slit

This digital imaging module (integrated beam splitter and camera adapter) is designed for Zeiss SL-120 and SL-130 Slit lamps, for still imaging



Optical Beamsplitter

Cube Beamsplitters Plate Beamsplitters Dichroic Beamsplitters Laser Beam Attenuators ©2025 Newport Corporation. All rights reserved.

Beam Splitters

When working with lasers, it is often necessary to split a laser beam into two or more defined partial beams. There are a variety of beam splitters for these applications, with different advantages and



// Polarizing Beam Splitter Optics, Custom Optical

Non-polarizing beam splitter cube, plate beamsplitters, laser line, beam splitting custom optics from PFG * Get Pricing Now *



Polarizing Beam Splitter Cubes

Polarizing Beam Splitter Cubes Polarization optics are used to split unpolarized light into s-pol and p-pol beams. In the following, a list of common polarization optics can be found which are described in

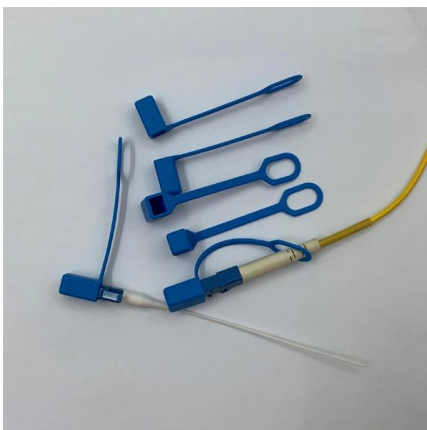


What are Beamsplitters?

Optical components that create two beams by splitting incident light are beamsplitters. Read more about the different types of beamsplitters at Edmund

Optical Beamsplitters , Polarising & Non-Polarising

We offer custom plate and cube optical beamsplitters, either polarising or non-polarising beam splitters, designed to split light into two beams.



CARL ZEISS 301513-9902-000 Beam Splitter

In summary, the Carl Zeiss Beam Splitter 50 SL 220/20/30 (301513-9902-000) is a versatile, high-performance beam splitter that offers unmatched precision, quality, and durability. Whether you're



Contact Us

For datasheets, pricing, or custom high-speed optical interconnect solutions,
please visit:

<https://syropy.com.pl>