

# **288 Optical Cable Junction Box Four Networks**





## 288 Optical Cable Junction Box Four Networks

---



### GJS-25-8 Fiber Cable Joint Box 288 Cores

GJS-25-8 fiber cable joint box belongs to the mechanical pressure sealing joint

### 288 Cores Dome Fiber Joint Closure

All functional indicators are in line with the national YD1-2004 standard for distribution box. Four-in and four-out cable ports; there are 1 large and 6 small circular holes, which can enter and exit the



### 288 Core Splitter Splice Closure 2/4 Ports Fiber Cable Joint Box Fiber

Durable Construction: The fiber optic splicing enclosure is made from high-quality PP+GF material, ensuring a robust and long-lasting performance in various operating temperatures between 40°C to

### 288-core Tri-Network Integrated Optical Junction Box Product Image

288-core Tri-Network Integrated Optical Junction Box Product Image (Construction Materials-Other Building Materials). Contact supplier for bulk pricing!



### **288F Vertical Fibre Optic Cable Joint Box/ Dome Type Optical Fibre**

There are 4 fiber optic cable access holes for the splice tray, which meet the requirements of all angles to enter the fiber. The splice tray is injection molded with high-strength engineering plastics.



### **KCO-J99H-288 1in 7out Vertical Pole-mount FTTH**

- KCO-J99H-288 fiber optic splice closure box is mainly used for optical fiber connection and protection in outdoor. - It is suitable for the connection of



### **FTTH Junction Box 24-288FO Fiber Enclosure FIST 288 Cores FOSC**

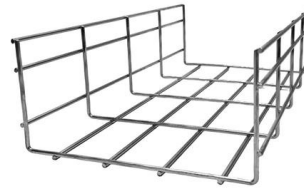
AFTTH Junction Box 24-288FO Fiber Enclosure FIST 288 Cores FOSC Dome Optical Fiber Cable Joint Box CV027 is a big dome type fiber optic splice closure. It has 1 oval cable port support cable entry





### 96 Core 144 Cores 288 Cores Outdoor Fiber Optical

96 Core 144 Cores 288 Cores Outdoor Fiber Optical Cable Distribution Cabinet for FTTH Solution Optical cable junction box is a kind of junction equipment which



### Iuron Vertical FOSC Optical Splice Enclosure Box 288 Core Fiber Optic Cable

The IU-ODN-FOSC-V-288-H Fiber Optic Splice Closure offers unmatched durability, flexibility, and protection for fiber optic networks, making it an ideal choice for a wide range of applications.

### Fibre Optical Multi Loose Tube Cable, Indoor-Outdoor, 288F

Physical Characteristics Fibre Count No of Tubes/ Fillers Fibres per tube Loose tube Diameter (mm) CSM OD (mm) Cable OD (mm) Cable Weighth (Kg/km) Operating Temperatu re (°C) 288 12 24 2.8



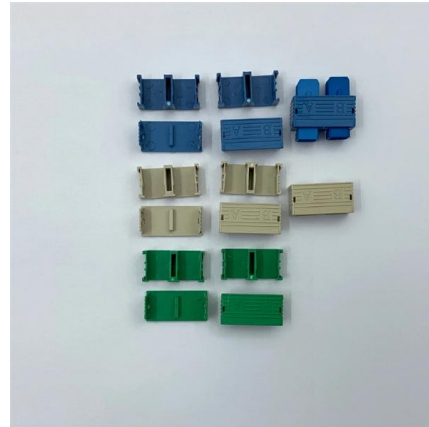
### FDT 288 cores optic distribution cabinet FTTH junction box with

FDT 288 cores optic distribution cabinet FTTH junction box with Insertion Module PLC Splitter. Ideal for FTTX networks. Wall/Pole Mounted. Durable & Efficient., Alibaba



## Essential Guide to Optical Cable Junction Boxes: Key Benefits & FAQs

Ensure that the box is clean and that connections are secure to maintain optimal performance. Are optical cable junction boxes waterproof? Many junction boxes are rated for water resistance, but it's

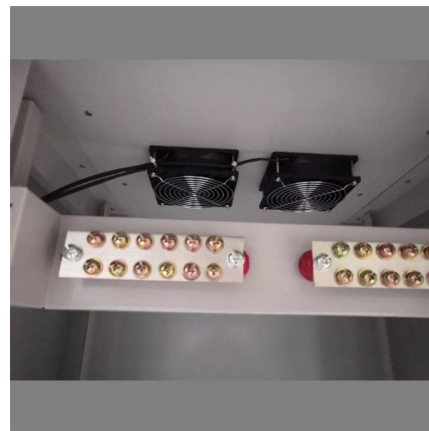


### Optical Cable Joint Box 12 24 48 72 96 144 288 Core

Optical Cable Joint Box 12 24 48 72 96 144 288 Core Fiber Connector Box, Find Details and Price about Connector Box Box from Optical

### Black Optical Fiber Junction Box

It serves as a splicing point for feeder cables to connect with distribution cables in FTTx backbone network systems. This closure integrates fiber splicing, storage, and cable management within a



### Fiber Terminal Box vs Junction Box: Key Differences

Fiber optic junction boxes must be installed as close to the work area as possible to avoid unnecessary cable lengths. You can use optical splitters and



### **Ftth 288 Core Fiber Optics Closure Dome Junction Box**

The primary function is to connect and splice a maximum of 288 core inlet distribution cables and indoor cable in the open air. fiber optics closure dome is widely used in EPON, GPON communication



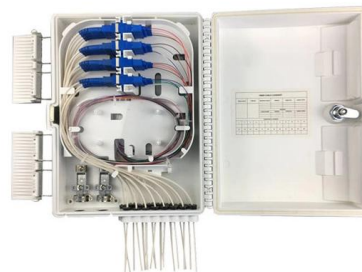
### **288 core optical cable joint box**

A 288-core optical cable joint is an ideal solution for organizations that require high-capacity fiber optic networks. It offers several advantages, including high capacity, space-saving



### **FTTH 288 Core Dome Type Fiber Optic Splice Closure**

FTTH 288 Core Dome Type Fiber Optic Splice Closure Box IP68 Junction Box Fiber Cable Joint Enclosure Product description: CV026 is an oval



### **Black Optical Fiber Junction Box**

Black 395\*208\*132mm Size 288 Cores Optical Fiber Junction Box 24 Trays 8 Fiber/Tray Fiber Optic Splice Closure Description: The Clos-8A-192 fiber optic splice closure can accommodate up to 192





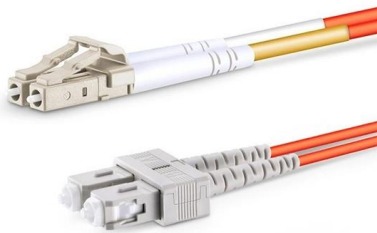
### Fiber Optic Joint Closure 288 Core, 4 In 4 Out

Quality Fiber Optic Joint Box manufacturers & exporter - buy Fiber Optic Closure 288 Core, 4 In 4 Out Horizontal Fiber Optic Junction Box from China



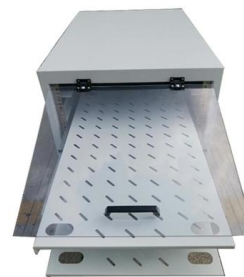
### Fiber Optic Joint Closure 288 Core, 4 In 4 Out

Outdoor Fiber Splice Enclosure, 4 In 4 Out Horizontal Fiber Optic Junction Box 1. Description: Arc horizontal type optical splice closure with seal fitting, Material:



### High Quality Outdoor Fiber Optical Splice Box

High Quality Outdoor Fiber Optic Splice Box Termination Box 288 Core We are providing high quality fiber optic terminal box which is up to 288 ports. The



### 288 core Cable Joint Closure Fiber Optic Access Terminal Junction

Splicing Capacity: 288 (24F/tray) Input Ports: 1 oval uncut port Output Ports: 6 Ports Input Cable size: 8~17.5mm Dimensions (mm): 385\*245\*130mm Material: PP Mounting method: wall mounting and





### **Black PP Material 192/288 Port Black Optical Cable Splice Box FTTH**

The equipment is used as a termination point for the feeder cable to connect with the drop cable in the FTTH communication network system. The fiber splicing, splitting, and distribution can be done in this



### **288 core Cable Joint Closure Fiber Optic Access Terminal Junction Box**

288 core Cable Joint Closure Fiber Optic Access Terminal Junction Box and Optical Splitter Closure Fiber Splice Cases No reviews yet Certificates:RoHS,

### **How to Choose the Right Optical Junction Box?**

Choosing the right optical junction box is crucial for ensuring the performance, reliability, and longevity of your optical networks.



### **FTTH 48 96 144 288 Cores Fiber Cable Joint Box Fiber**

FTTH 48 96 144 288 Cores Fiber Cable Joint Box Fiber Optic Splice Closure Fiber Optical Enclosure Terminal Box The equipment is used as a termination point for





### **OHC3-288 Optical Hub Cabinet**

OHC3-288 Optical Hub Cabinet Optical Hub Cabinets (OHC) provide fiber distribution to subscribers from a compact, environmentally protected outdoor



### **MDB-FA 288F optical distribution box IP65 incl. trays,**

Optical distribution box MDB FA 288 is designed for the placement of 144 optical splices indoors and outdoor. The distribution box can be extended by a pole

## **Contact Us**

---

For datasheets, pricing, or custom high-speed optical interconnect solutions, please visit:  
<https://syropy.com.pl>