

# 850nm Multimode Fiber





## Overview

---

Multi-mode optical fiber is a type of optical fiber mostly used for communication over short distances, such as within a building or on a campus. Multi-mode fiber has a fairly large core diameter that enables multiple light modes to be propagated and limits the maximum length of a transmission link because of modal dispersion. ApplicationsThe equipment used for communications over multi-mode optical fiber is less expensive than that for.



## 850nm Multimode Fiber

---



### **Eaton N286-01G-SX-C 1000BASE-SX SFP LC , 850 nm, 1.25 Gbps,**

Keep short-range fiber links clean, predictable, and easy to service with a 1000BASE-SX SFP transceiver designed for multimode environments. The LC duplex interface and 850 nm wavelength

### **OM1 vs OM2 vs OM3 vs OM4 vs OM5 Multimode Fiber**

Compare OM1, OM2, OM3, OM4, and OM5 multimode fiber specs, distances, bandwidth, and applications. Essential guide for data center fiber

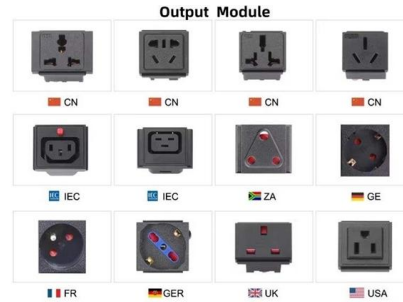


### **10Gtek 10GBase-SR SFP+ LC Transceiver, 10G 850nm**

10GBASE-SR SFP+ to LC Optical 10 Gigabit Ethernet Fiber transceiver module, 10GbE Multimode SFP+ (compatible with both 62.5um and

### **Multimode SFP+ 850 nm Lichtwellenleiter-Sender, -Empfänger**

Multimode SFP+ 850 nm Lichtwellenleiter-Sender, -Empfänger, -Transceiver sind bei Mouser Electronics erhältlich. Mouser bietet Lagerbestände, Stückpreise und Datenblätter für Multimode



#### Why Choose Us

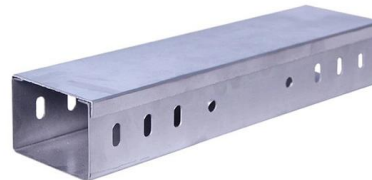


### Optical Fiber OM1 062 (62.5/125µm Multimode Fiber

Datasheet: GD046917v8 SPECIFICATION FOR 62.5/125 MULTIMODE OPTICAL FIBER: ISO/IEC 11801 & IEC 60793-2-10 Type A1b SPECIFICATION

### OS1 vs OS2, OM3 vs OM4 vs OM5 - Fiber Optic Cable

Discover the key differences between OS1 and OS2 singlemode fibers, and OM3, OM4, OM5 multimode cables. Learn how to select the right fiber type



### 850nm Multimode Fiber Optical Amplified Photodetector / Photoreceiver

Our bonding material not only meets NASA's low outgas requirement, but is also capable of withstanding high temperatures (85°C). The package meets the Telecordia 1221 reliability standard. A fiber optic



## Optical Fiber OM2 050 (50/125µm Multimode Fiber

Datasheet: GD046916v8 SPECIFICATION FOR 50/125 MULTIMODE OPTICAL FIBER: ISO/IEC 11801, IEC 60793-2-10 Type A1a.1 and ITU-T RECOMMENDATION G.651.1 SPECIFICATION



### Multimode Fiber Data Sheet

This fiber is a laser-optimized, bend-insensitive, graded-index multimode fiber designed for transmission speeds of 10 Gb/s and beyond. OM5 is backwards compatible with OM4 and supports single

### StarTech Gigabit 850nm Multi Mode SFP Fiber Optical

Using a short wavelength (850nm) VCSEL laser diode and enabling a maximum cable distance of 1804' (550m) over multi mode fiber, this Small Form Factor



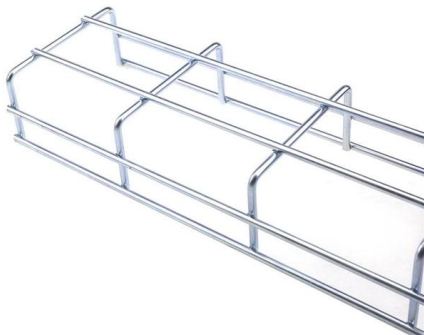
### 400G Optical Modules Explained: SR4 Vs. DR4 Vs. FR4

Key differences between SR4, DR4, FR4, and LR4 400G optical modules. Expert advice from Asterfusion engineers to optimize your data center



### **COBTel 12-Core OM5 MPO Patch Cord, Pre-Terminated Trunk Cable**

MPO-OM5 Fiber Optic Patch Cord The lime-green mpo fiber patch cable that hyperscale data centers choose - carrier-grade MT ferrule,  $\leq 0.3$  dB insertion loss, pre-terminated and ready to deploy the



### **Fiber Optic Cable Types: Comprehensive Guide**

Explore the different types of fiber optic cables and understand which type suits your specific needs for speed, distance, and durability.

### **ACT Fiber optic LC loopback adapter multimode 850 nm. Suitable for**

Jetzt registrieren Anmelden Send på mail  
Reciever name Empfänger E-Mail Absender  
Absender E-Mail Notiz Schicken Lesen Sie weitere  
Spezifikationen und Beschreibung ACT LWL-LC-  
Loopback



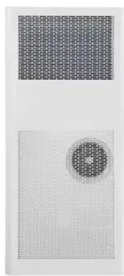
### **Fiber Optic Wavelengths Explained: 850 vs 1310 vs**

Light is more than what meets the eye. In fiber optics, the choice of wavelength is a fundamental design decision: it determines how far your signal



### **H!Fiber 10G Multimode SFP+ LC Module, 10GBase-SR Fiber**

About this item 10GBase-SR SFP+: 10 Gigabit Ethernet Multimode SFP+ Module, 10 Gb/s, 850nm wavelength, Duplex Dual LC, MMF, operates on multi-mode (OM3/OM4) LC/UPC fiber cable spans of up to 300m (984 Ft) in length; 2 Pack Wide Compatible: Perfect for Cisco SFP-10G-SR, Meraki MA-SFP-10GB-SR,



### **BlueOptics SFP-10G-SR-BO**

10G SFP+ transceiver til multimode-fiber. LC-stik, 850 nm, 300 m rækkevidde, DDM og Cisco-kompatibilitet. Ideel til switches og højhastighedsnetværk.

### **Multimode 850 nm Fiber Optic Transmitters, Receivers, Transceivers**

Mouser offers inventory, pricing, & datasheets for Multimode 850 nm Fiber Optic Transmitters, Receivers, Transceivers.



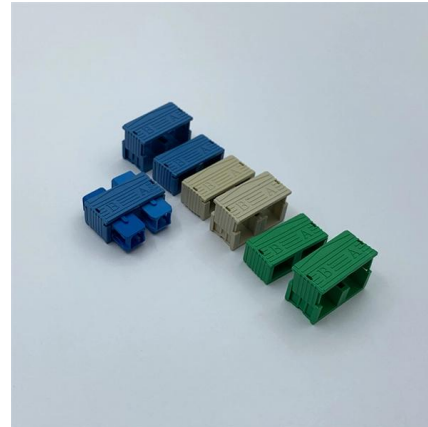
### **SFP Wavelength Guide: 850nm vs. 1310nm vs. 1550nm**

The 850nm multimode SFP transceiver is primarily designed for short-reach communication over multimode fiber (MMF). It is widely deployed in



### 4Pack 10Gbase-SR SFP+ LC Transceiver, 10G

FLYPROFiber- LC to LC Fiber Patch Cable 1M/3ft, OM3 Multimode Fiber Optic Cable Cord, 10GB/40GB, Duplex, 50/125um, LSZH, Options: 0.2m



### Choice 2PCS 10G SFP+ Dual Fiber LC SFP Module Multimode 850nm

With Trendyol , you will be able to purchase 2PCS 10G SFP+ Dual Fiber LC SFP Module Multimode 850nm 300m Duplex SFP-10G-SR Compatible With variou Choice with very special discounts. Shop

### Multimode vs Single Mode Fiber Optic Cables: A Complete Guide to

Learn the differences between multimode (OM1-OM5) and single mode (OS1-OS2) fiber optic cables--speed, distance, applications, and how to choose the right one for data centers and



### How Wavelength (850/1310/1550nm) Affects Transceiver Reach --

Choosing the right optical wavelength is one of the quickest ways to determine how far a Siustuvus imtuvas can reliably carry data. Engineers decide among 850 nm, 1310 nm and 1550 nm based on



**D-Link DEM-S2801SR 25GBase-SR SFP28 Multimode Transceiver 100m 850nm**

Operating at 850nm wavelength over multimode fiber, this transceiver delivers blazing-fast 25 Gigabit speeds for distances up to 100m on OM4 fiber or 70m on OM3 fiber. Featuring hot-swappable design

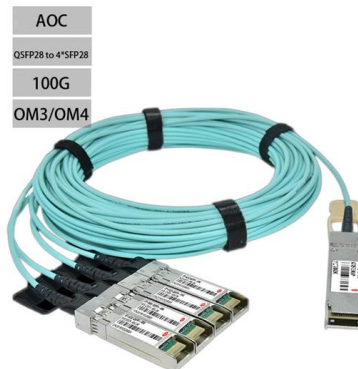


**SFP1-MM-D Optical multi-mode 850nm 1G SFP transceiver**

SFP1-MM-D is a fiber optic duplex transceiver for 850nm multimode signals. This standard pluggable SFP optical module has an LC connector for reception and transmission of signals over a single

**How Wavelength (850/1310/1550nm) Affects Transceiver Reach --**

Choosing the right optical wavelength is one of the quickest ways to determine how far a Transceiver can reliably carry data. Engineers decide among 850 nm, 1310 nm and 1550 nm based on reach, fiber



**Eaton Tripp Lite 1GbE Medienkonverter 550m , Future-X**

Eaton Tripp Lite Series Gigabit Multimode Fiber to Ethernet Media Converter, 10/100/1000 LC, International Power Supply, 850 nm, 550 m (1,804 ft.) - Medienkonverter - 10Mb LAN, 100Mb LAN,



### **4 Pack 1.25G 850nm Multimode SFP LC Transceiver**

4 Pack 1.25G SFP SX optical module 850nm Multimode reach 550m transmission distance, SFP Fiber module is Hot-Swappable with ESD protection



### **Fiber Optic Only SFP-10G-SR Compatible 10GBASE SFP+ 850nm**

For 10 Gb/s LC duplex optical links on multimode fiber Meets 10GBASE-SR (850 nm, up to 300 m) specifications with DOM/DDR support Compatible with 10 Gb/s Ethernet ports using the SFP+ form

## **Contact Us**

---

For datasheets, pricing, or custom high-speed optical interconnect solutions, please visit:  
<https://syropy.com.pl>