

# AI Server Extension





## Overview

---

The first and only Visual Studio extension that gives AI assistants access to the C# compiler (Roslyn) and the Visual Studio Debugger through the Model Context Protocol. Chrome MCP Server — AI-Powered Browser Automation via Model Context Protocol The best MCP server for Chrome browser automation. The system synchronizes your physical browser with a virtual browser, allowing AI to see exactly what you see and act exactly like a human user. 41 Roslyn-powered tools with compact output saving 70-90% tokens - AI navigates your codebase faster than ever before. Symbol search, diagnostics, refactoring, full debugger control, build operations. AI can mean many things: machine learning, large language models, generative AI, and more. With Extensions, you can control web content and customize the browser, improving user experience on the web.



## AI Server Extension

---



### AI Service Assist expands TeamDynamix ITSM platform with

TeamDynamix launches AI Service Assist, an AI-driven ITSM extension that enhances automation, speed, and enterprise agility.



### Home

The Air Force Civilian Service offers you the opportunity to play a crucial role in our nation's defense while living at home and serving locally.

### Code Server

By incorporating Code Server into the service, we provide AI-users with a cloud-based IDE that supports her scenarios and enables efficient coding,



### Office 2016/2019 have reached end of support - here's

What happens when a product reaches end of support? After a product's support period ends, Microsoft no longer provides: Security fixes for



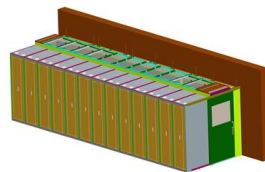
### **MCP Server & Chrome Extension: Empowering AI Apps**

Developed as an open-source project, Browser MCP combines a Model Context Provider (MCP) server with a Chrome extension, enabling AI-powered



### **Chrome MCP: AI-Powered Browser Automation for LLMs , AIBit**

Turn Chrome into an AI assistant with Chrome MCP Server. This open-source extension enables advanced browser automation, content analysis, and semantic search for LLMs like Claude.



### **aibe-server · PyPI**

This makes AI browser automation more reliable, intuitive, and adaptable to any web application. This is the server component that works with the AIBE Chrome extension to implement



### MCP Chrome Extension

Turn Chrome into an MCP server. Let AI control your browser: navigate, click, fill forms, and take screenshots.



### GitHub

? Source-controlled AI checks, enforceable in CI. Powered by the open-source Continue CLI - [continuedev/continue](https://github.com/continuedev/continue)

### VS Code for enterprise

AI and Copilot features - Agent mode, MCP servers, and tool approvals Extensions - Allowed extensions and private marketplace Telemetry - Data collection levels



### Enabling Claude Code to work more autonomously

Introducing Claude Code upgrades: native VS Code extension, terminal UX updates, and checkpoints for autonomous development. Handle



### Custom agents in VS Code

Learn how to create custom agents (formerly custom chat modes) to tailor AI chat behavior in VS Code for your specific workflows and development scenarios.

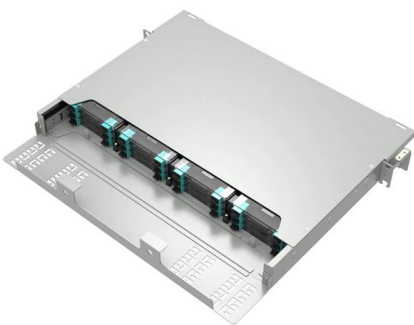


### Researchers Warn of Data Exposure Risks in Claude

Security experts at Zenity Labs warn that Anthropic's new agentic browser extension, Claude in Chrome, could bypass traditional web security,

### Get started with AI and MCP

The MCP C# SDK depends on the Microsoft.Extensions.AI libraries to handle various AI interactions and tasks. These extension libraries provides



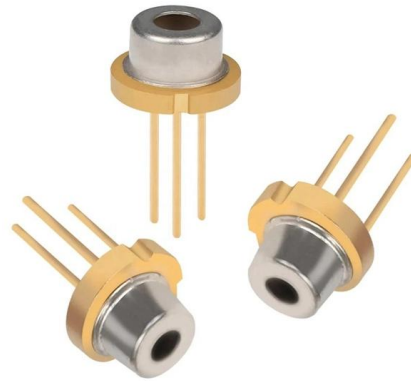
### GitHub

? Turn your Chrome browser into your intelligent assistant - Let AI take control of your browser, transforming it into a powerful AI-controlled automation tool.



## MSSQL Extension for VS Code v1.41 , What's New

MSSQL extension for VS Code v1.41 adds SQL Notebooks, GitHub Copilot in Schema Designer, and Data API builder. Three features now generally available.



## MCP AI Server

Need the AI to understand a library you depend on? Clone the source from GitHub, open it in a second Visual Studio -- each instance runs its own

## AI in the car: Bosch presents cockpit innovations at CES

At one of the world's leading electronics trade fairs, CES® 2026 in Las Vegas, USA, Bosch will unveil its new AI extension platform, an AI-enabled



## MCP SuperAssistant

MCP SuperAssistant brings the full power of the Model Context Protocol directly into your browser. Works with ChatGPT, Perplexity, Gemini, Grok, AIStudio, and



## Malicious Chrome Extensions Steal ChatGPT

OX Security discovered malicious Chrome extensions stealing ChatGPT and DeepSeek conversations from 900K users. One received Google's



### More products



## Chrome MCP Server , Awesome MCP Servers

Chrome MCP Server is a Chrome extension-based Model Context Protocol (MCP) server that exposes your Chrome browser functionality to AI assistants like

## GitHub

Official repo for spec & SDK of MCP Apps protocol - standard for UIs embedded AI chatbots, served by MCP servers - modelcontextprotocol/ext-apps



## GitHub Copilot · Your AI pair programmer

GitHub Copilot works alongside you directly in your editor, suggesting whole lines or entire functions for you.



## Hands On: Building an MCP Server with VS Code AI

Microsoft's AI Toolkit extension for VS Code now lets developers scaffold a working MCP server in minutes. Here's what that looks like in practice -



## Malicious AI extensions on VSCode Marketplace steal

Two malicious extensions in Microsoft's Visual Studio Code (VSCode) Marketplace that were collectively installed 1.5 million times, exfiltrate developer

## ClaudeBleed Vulnerability Lets Hackers Hijack Claude Chrome Extension

Cybersecurity researchers from LayerX have found a major security flaw in the Claude for Chrome browser extension that could allow hackers to take full control of the AI assistant. They have



## Sunset notice: GitHub App-based Copilot Extensions

GitHub is deprecating GitHub App-based Copilot Extensions on November 10, 2025, in favor of MCP servers. MCP provides a universal standard



## Extensions and AI , Chrome for Developers

You can build AI-powered extensions that summarize text, help with translation, generate content, assist with coding, provide recommendations, personalize user



## GitHub

Install the extension for your IDE. Search for RocketRide in the extension marketplace: Not seeing your IDE? Open an issue · Download directly Click the RocketRide extension in your IDE Deploy a server

## Contact Us

---

For datasheets, pricing, or custom high-speed optical interconnect solutions, please visit:  
<https://syropy.com.pl>