

# **About the fiber optic cable entry room of the communication equipment room**





## Overview

---

The "telecommunications closet," or as it is now called "telecommunications room (TR)," is the (typically) small equipment room closest to the end user, where the termination of the backbone cabling and connection to "horizontal cabling" which runs to the end user occurs. Backbone cable connects telecommunications spaces through dedicated infrastructure pathways, serving as the primary network connection between entrance facilities, equipment rooms, and telecommunications rooms. My extensive experience shows that backbone cabling consists of fiber optic cables or. CommScope has engineered its building entrance cabinet line to solve the most demanding requirements of an advanced building entrance strategy, including: FACT<sup>®</sup> Optical Distribution Frame FACT<sup>®</sup> Fiber Optic Splice Chassis for FACT ODF FIST<sup>®</sup> GC02 Round Fiber Optic Splice Closure FIST<sup>®</sup> GC02 Flat. ANSI/TIA-569-E "Telecommunications Pathways and Spaces" was developed by the TIA TR-42. The central hub of a data center, referred to as the Meet-Me-Room (MMR), is a secure space where fibers and cables from data center racks come together.



## About the fiber optic cable entry room of the communication equipment

---



### Global Leader in Materials, Networking, and Lasers

Learn how Coherent empowers innovations and breakthrough technologies for the industrial, communications, electronics, and instrumentation markets.

### Key Differences Between Meet-Me Room (MMR),

The Entrance Room is the secure gateway for external telecom services entering the data center. It acts as the first point of demarcation where service provider

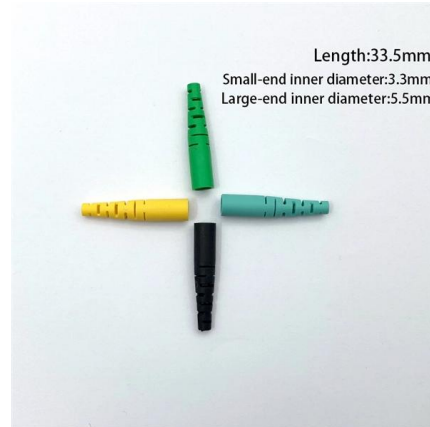


### The FOA Reference For Fiber Optics

Since fiber supports longer links than copper, it's possible to build networks without telecom rooms for intermediate connections, just passive fiber optics from the

### Building entry for fibre optic cables by Faber

A building entry for fiber cables is of crucial importance, especially when laying the fiber optic connection into the house. By choosing the right building entry point with different types of walls, a seal can be



## 7 Components of Structured Cabling

The equipment room houses core network components, including servers, routers, switches, and PBXs. It serves as the central distribution point for the structured



## Accommodating Telecom Variety: Design requirements

That made me wonder if the documents also called for hitching posts out front for horses! Newer planning documents include fiber optics, but most assume there



## Building Entrance Facility

The entrance facility is the location where the Telecom Service Provider equipment and demarcation points interconnect with the data center. Its equipment is critical to the security, safety, and reliability



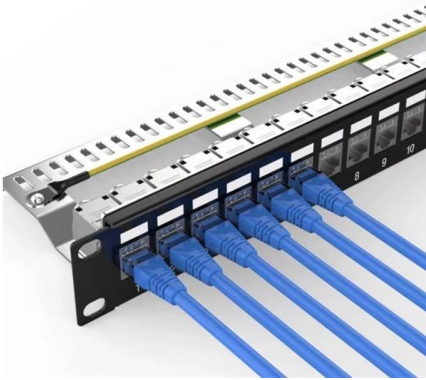
## Light Reading

Light Reading is the leading source of news analysis for communications industry professionals.



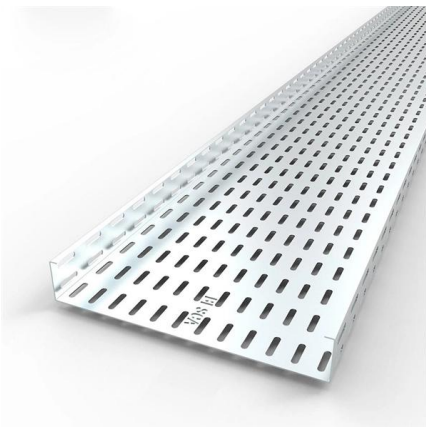
## Home

Optical Cable Corporation Networks that Mean Business High-performance networks are essential to business, including manufacturing, transportation, education,



## The FOA Reference For Fiber Optics

Fiber Optic Network Design Jump To: The Communications System Cabling Design  
Choosing Transmission Equipment Planning The Route Choosing Components



## Fiber Entrance Solutions for Central Office/Headend

A critical piece of an advanced design is the building entrance termination point, where the OSP and IFC cables are joined, managed, distributed, and protected.

## Microphone



The fiber-optic microphone design is therefore ideal for use in areas where conventional microphones are ineffective or dangerous, such as inside industrial

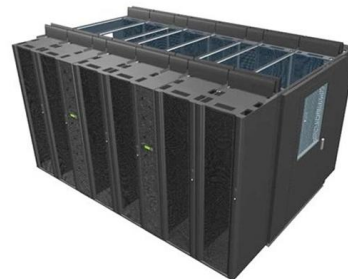


### Entrance Facility - Demarcation point - Equipment

Telephone and data networking equipment such as hubs, switches and routers are often located in the equipment room. Backbone cabling should be terminated in

### The FOA Reference For Fiber Optics

The communications connection to the outside world comes into the building through what is called a "service entrance" and is terminated in the main "equipment



### MarketsandMarkets

Revenue Impact Firm - MarketsandMarkets offers market research reports and quantified B2B research on 30000 high growth emerging opportunities to over 10000 clients worldwide. Get detailed insights



## Installing Fiber Optic Networks: A Step-by-Step Guide

Installing a fiber optic network can seem daunting, but with the right approach, it can be a straightforward process. This guide outlines the key steps



### Telecommunications Rooms and Why They Matter

Telecommunications rooms consolidate connectivity from outside service providers and all network-connected nodes within a building.

### The 6 components of Structured Cabling

The entrance facility is where the external telecommunications services enter the building. It's the point of demarcation between the service



### Online Bulk Cable Company , CableWholesale

As a premier online bulk cable company, CableWholesale carries a large inventory of computer cables, USB, HDMI, fiber optic, VGA cables, and more. Shop now!

### Outside Plant to the Meet-Me-Room Data



## Center Solutions

The central hub of a data center, referred to as the Meet-Me-Room (MMR), is a secure space where fibers and cables from data center racks come together.



## AFL

AFL is a leading provider of fiber optic solutions for broadband networks, data centers, energy infrastructure, and other applications. We offer a wide range of

## Standard for Installing and Testing Fiber Optics

Safety in fiber optic installations specifically includes avoiding exposure to light radiation carried in the fiber; disposal of fiber scraps produced in cable handling and termination; and safe handling of



## WORLD WIDE WEB JOURNAL Home

Internet communications tools Document preparation Computing industry Computing standards, RFCs and guidelines Computer crime Language types Security and privacy Computational complexity and



## ANSI/TIA-568

The demands placed upon commercial wiring systems increased dramatically over this period due to the adoption of personal computers and data communication



## ANSI/TIA-569-E: Telecommunications Pathways and

Pathway locations include areas above the ceiling, access and cellular floor systems, cable support systems, underfloor duct and insert systems, perimeter pathways



## Choosing the Right Building Entry Point

Building entry points need to provide a reliable, customisable, extensible and maintainable fibre interconnection functionality for a multiplicity of building



## What is Backbone Cabling? The Cable That Connects The

Backbone cable connects telecommunications spaces through dedicated infrastructure pathways, serving as the primary network connection between entrance facilities, equipment rooms,



**ITPro Today, Network Computing, IoT World Today combine**

ITPro Today, Network Computing and IoT World Today have combined with TechTarget . The page you are looking for may no longer exist.



**Home Page Omdia**

Omdia, part of Informa TechTarget, Inc., is a global analyst and advisory leader that helps you connect the dots across the technology ecosystem. Our deep

**Contact Us**

---

For datasheets, pricing, or custom high-speed optical interconnect solutions, please visit:  
<https://syropy.com.pl>