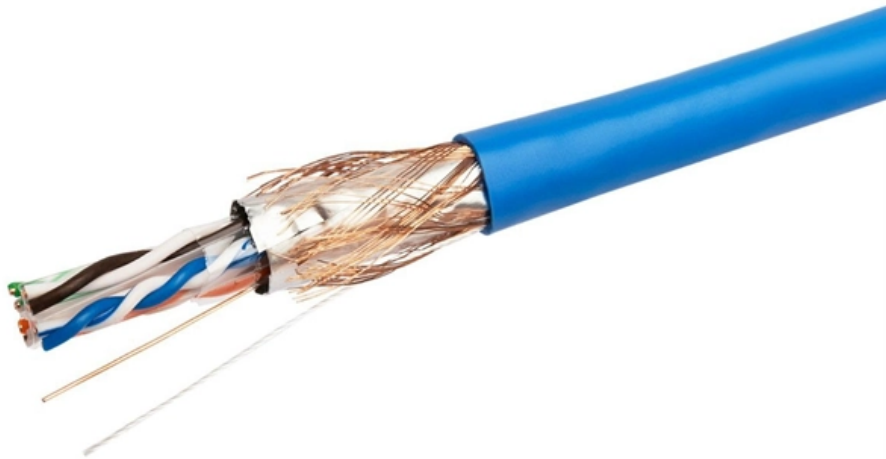


Backplane bandwidth of fiber optic switches





Overview

Backplane bandwidth represents the overall data exchange capacity of the switch, measured in Gbps. FlexPlane Optical Flex Circuits provide versatile, high-density routing on a flexible substrate, and Routed Ribbon Solutions offer cable management and mitigate airflow challenges for low-profile Network interface cards (NICs), switch fabric modules, complex shuffling and backplane applications. However, 48 ports x 1Gbps (plus potentially 2 x 10Gbps in network module) definitely doesn't squeeze into 32Gbps stack ring, so the stack ring is contended. The LightCONEX® series of optical plug-in and backplane module connectors for OpenVPX systems is Smiths Interconnects' answer to the stringent SWaP requirements of today's defense applications in which fiber optics are replacing high bandwidth copper interconnects. Next-generation VPX interconnects allow the signal transition path to expand to 100G bandwidth through a traditional copper backplane.



Backplane bandwidth of fiber optic switches



How to calculate Backplane bandwidth and packet sending rate of a

Calculation of backplane bandwidth and packet forwarding rate for switches in each layer.

\$LITE EXECUTIVE OVERVIEW The OFC 2026 briefing material

The deck's architecture slide explicitly models a progression from phase 0 scale-out, to phase 1 inter-rack scale-up with full copper backplanes still intact, to phase 2 hybrid copper/optical



Backplane connector

These active blind-mate optical interconnects are revolutionary solutions for VPX systems and meet stringent SWaP requirements of today's defense applications

Backplane Connectors , Products , Amphenol

VPX Optical and Coax Backplane (VITA 66 & 67)
VITA 66.x and VITA 67.x are standards that define families of blind mate Fibre Optic interconnects and



Optical Switching Data Center Networks: Understanding Techniques

Thus, optical switching supports much higher bandwidth than electrical switching and at much lower packet completion time due to the removing of electronic circuits for switching.

Co-Packaged Optics -- a deep dive , APNIC Blog

Optics also allow a chassis to scale in size and create super scale-up clusters across multiple racks without having to keep everything within a few



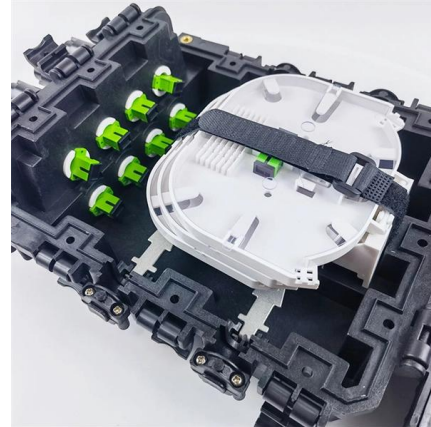
News

The switching capacity of the switch, also known as the backplane bandwidth or switching bandwidth, is the maximum amount of data that can be handled



NF1006 Model 1.6g Backplane Bandwidth Store-and-Forward

NF1006 is a non-managed POE switch with six 100-megabit adaptive RJ45 ports.



Cisco Nexus 9500 Platform Switches

The Cisco Nexus 9500 platform consists of Layer 2 and 3 nonblocking Ethernet switches with backplane bandwidth of up to 60 terabits per second (Tbps), the Cisco Nexus 9504, 9508, and 9516 Switches

How to consider the factors of network switch backplane bandwidth

Backplane bandwidth refers to the data exchange capability of a switch, measured in Gbps, also known as switching bandwidth. The backplane bandwidth of switches typically ranges from a few Gbps to



Network Switch Performance Calculators , Indra Heera Group:This

These calculators from Indra Heera Group help IT professionals and network engineers estimate both switching capacity and forwarding performance of their network switches, enabling high-speed,



Understanding Backplane Bandwidth in Industrial Switches

This article explains what backplane bandwidth is, why it is important for industrial switches, and how to choose the right bandwidth based on network requirements.



Fiber-optic communication

Optical fiber is used by many telecommunications companies to transmit telephone signals, internet communication, and cable television signals.

Switching Capacity vs. Backplane Bandwidth: What's the Difference?

A robust backplane bandwidth ensures that the switch can internally handle the data it receives and sends. This is crucial because even if a switch has a high switching capacity, it still needs sufficient



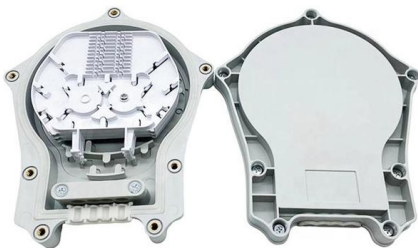


Switch

Ideally a backplane switching fabric should be non blocking for every frame size including the smallest ones (64 bytes in ethernet standard) but in

Switching Capacity, Forwarding Rate, and Bandwidth:

Fiber optic network switches are a valuable asset to any high performance surveillance networks. They are analyzed on the basis of several performance



25G/50G PON Coexistence in FTTx: Link Budget & Architecture

25G/50G PON coexistence in FTTx utilizes WDM-r coexistence elements to multiplex high-speed ITU-T G.9804 and IEEE 802.3ca wavelengths over existing legacy optical distribution

How to calculate the switch's backplane bandwidth?

The backplane bandwidth marks the total data exchange capability of the switch, and the unit is Gbps, also called the exchange bandwidth. The higher



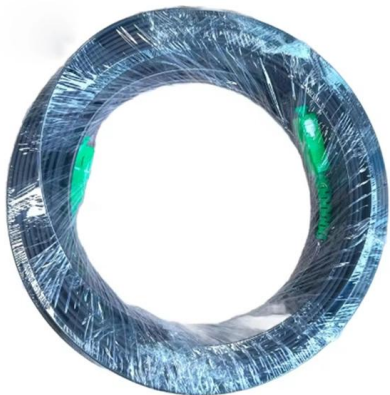
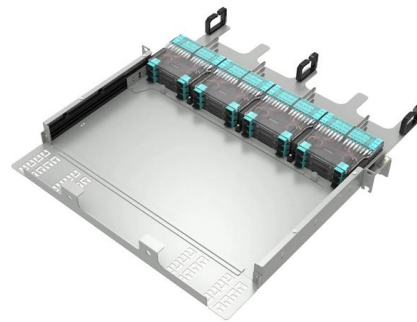


Switching Capacity, Forwarding Rate, and Bandwidth:

Switching capacity refers to the maximum amount of data that can be transmitted between the switch interface processor (or interface card) and the data bus, also

Technical Deep Dive into the FiberHome HSUC Switch Uplink Card for

Modern Carrier Ethernet access architectures require modular chassis form factors that deliver maximum backplane density without introducing excessive thermal envelopes or space consumption



ZXA10 C600 OLT 19inch Chassis: Next-Gen TITAN Architecture

The mechanical and electrical engineering of the ZXA10 C600 platform represents a significant leap forward in central office hardware design. To accommodate the immense thermal output of next

TP1910 10GB SFP+ Switch (8 Port

8 High-Speed SFP+ ports enabling 10GB connection speeds for all your optical fiber devices 10 Gigabit Small Form-factor Pluggable switch with 160GB backplane





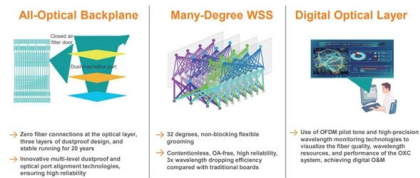
\$CRDO Credo Technology's Q2 FY26 earnings call presents a

ZeroFlap optics is framed as the first laser-based optical connectivity family that delivers "AEC class network reliability," enabled by a custom optical DSP "tightly coupled with our pilot



VPX Backplanes Go Optical

Optical backplanes are seen by some as the ultimate solution for higher bandwidth interconnections, and hence long anticipated in embedded computing. The practicality of backplane-based optical



How to calculate the switch's backplane bandwidth?

1) wire-speed backplane bandwidth Examine the total bandwidth that all ports on the switch can provide. Calculate the number of ports * The



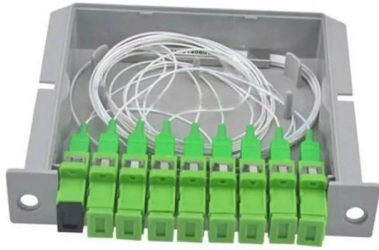
Questions about backplane bandwidth

The backplane bandwidth refers to the bus bandwidth/speed available for communication between the line cards and the SUP module in a chassis-based switch, like the 6500.





Cisco Nexus 9500 Platform Line Cards and Fabric Modules



The Cisco Nexus 9500 Series consists of Layer 2 and 3 nonblocking Ethernet switches with backplane bandwidth of up to 115.2 Terabits per second (Tbps). The Cisco Nexus 9504, 9508, and 9516

Cisco Nexus 9500 Platform Line Cards and Fabric Modules

The Cisco Nexus 9500 Series consists of Layer 2 and 3 non-blocking Ethernet switches with backplane bandwidth of up to 115.2 Terabits per second (Tbps). The Cisco Nexus 9504, 9508, and 9516



LightCONEX Backplane connector , Smiths Interconnect

Next-generation VPX interconnects allow the signal transition path to expand to 100G bandwidth through a traditional copper backplane. Backplane assembly

1-Port GbE SFP Network Card, PCIe 2.1 x1, Intel I210

1-Port GbE SFP Network Card, PCIe 2.1 x1, Intel I210-IS, 1GbE Controller, 1000BASE Copper/Fiber Optic, Single-Port Gigabit Ethernet NIC, Desktop/Server





How To Calculate The Backplane Bandwidth And Packet Forwarding

Find the calculations for backplane bandwidth and packet forwarding rate of switch in this article

New Expanded Beam Optical MSA Launches

From our archives July 2021 - Webinar: Expanded Beam Optics How do you ensure the reliability of a fiber connection to a switch at very high line rates or once co-packaged optics (CPO)



Gigabit Ethernet

IEEE 802.3ap defines Ethernet operation over electrical backplanes at different speeds. Ethernet in the first mile later added 1000BASE-LX10 and -BX10

Contact Us

For datasheets, pricing, or custom high-speed optical interconnect solutions, please visit:
<https://syropy.com.pl>