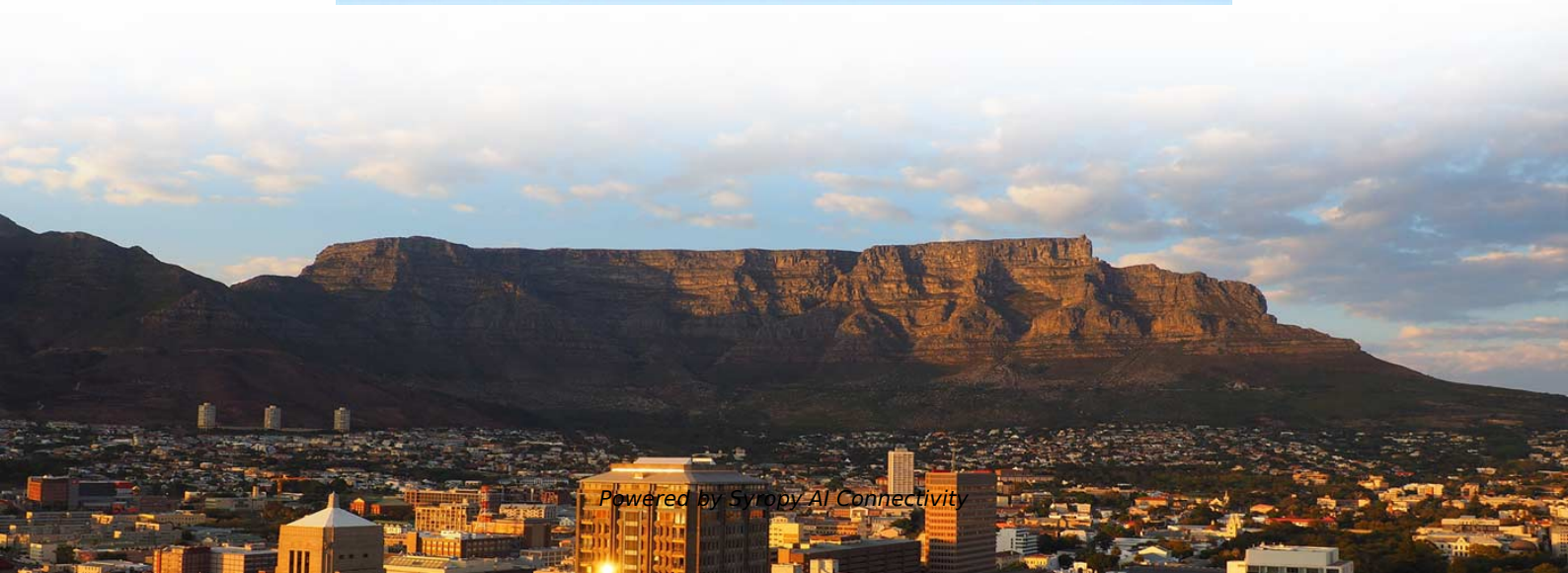




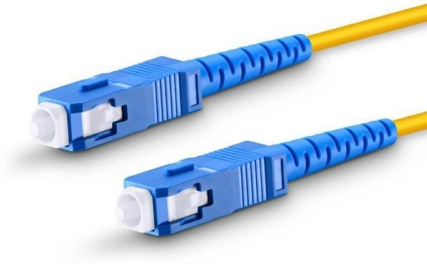
Syropy AI Connectivity

Cable Tray Cover Plate Installation Quota





Cable Tray Cover Plate Installation Quota



Method Statement for Installation of Cable Tray or Trunking

On completion of cable tray/ ladder installation including fittings, inspect exposed finish. Remove burrs & construction debris and repair damages finishes

Cable Tray Technical Guide A practical guide to product selection and

Cable tray length is selected based on the load to be supported, the distance between the supports (also referred to as the span), and handling and installation constraints.

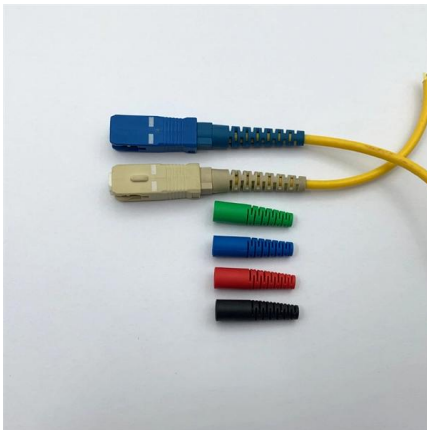


How to Install Cable Tray: A Comprehensive Guide to Different Cable

Welcome to our step-by-step guide on installing cable trays! In this video, we'll explore the different types of cable trays available and provide detailed instructions for their installation.

METHOD STATEMENT FOR Cable tray and trunking system installation

Cable tray and trunking system relevant to this particular section of works will be checked and verified that these are correct type.



Epoxy Cable Tray

Benarx Epoxy Cable Tray protects critical power and signal cables in case of fire, maintaining their integrity and functionality. The products is known for its

Metal Cable Tray Installation Guidelines , Cable Tray Institute

The Cable Tray Institute is making available the current edition of this practical guide for the proper installation of aluminum or steel cable tray systems. These guidelines will be useful to engineers,



Method Statement installation of Cable Trays and Ladders

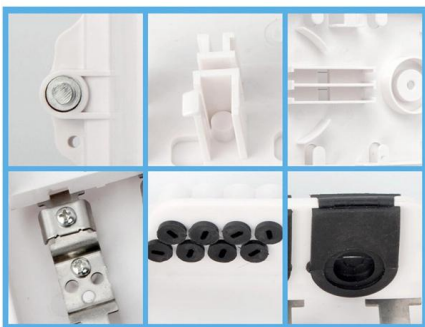
This method statement covers the site installation of the cable tray & ladders and the requirements of checks to be carried out.





Cable tray manual

Nearly every aspect of cable tray design and installation has been explored for the use of the reader. If a topic has not been covered sufficiently to answer a specific question or if additional information is



Best practice guide to cable ladder and cable tray

Cable ladder and cable tray systems The following recommendations are intended to be a practical guide to ensure the safe and proper installation of

100+ Essential Questions Answered About Cable Trays:

Discover over 100 expert answers about cable trays, covering key topics like material selection, load capacity, installation methods, and maintenance.



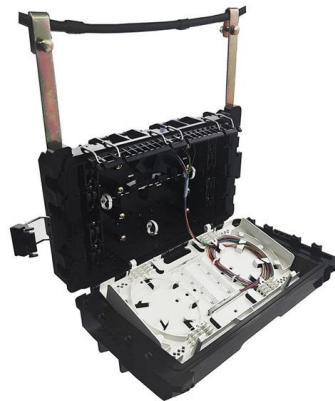
CABLE TRAYS CONNECTION INSTRUCTIONS

It is possible to use cable trays as grounding conductor equipment. In accordance with National Electrical Code (NEC) Article 392 "Cable trays" first determine the Maximum Fuse Ampere Rating or



INSTALLATION GUIDE

Per NEMA V2, installing cover on outdoor cable tray systems is not common practice. Should they be required, proper attachment is required to protect them from the force of the wind.

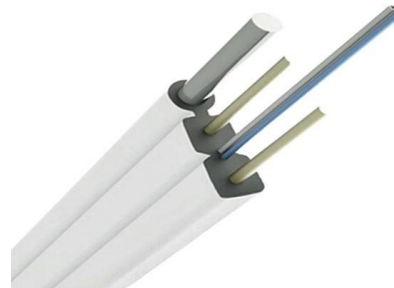


CABLE TRAY INSTALLATION PROCEDURE

Locate the area where cable tray shall be installed as per the Issued For Construction (IFC) drawings. Prepare the required tools and materials to be used

GUIDE CABLE TRAYS TECHNICAL

If it has excellent electrical continuity and is integrated in the installation's equipotential bonding system, a metal cable tray reduces the coupling's impact and thus contributes to good EMC of the electrical



Guide to cable support systems

The total system weight, including cable tray, cover and ballast block, is calculated taking the gravitational acceleration and safety factor into consideration.





CABLE TRAY

Prior to installing cable in the cable tray, examine cable paths to ensure all areas are free of debris that may interfere with the cable's installation. The cable tray should never be used as a walkway.



Cable Tray Installation Details

The document outlines specifications for various joint plates and connectors used in cable tray installations, including dimensions and quantities for each component.

Cable Tray Technical Guide A practical guide to product selection and

A practical guide to product selection and installation This guide for engineers and installers has been developed by ABB as a practical reference regarding cable tray characteristics, installation, and



GUIDE CABLE TRAYS TECHNICAL

In accordance with its continuous improvement policy, Legrand reserves the right to change the specifications and illustrations without notice. All illustrations, descriptions and technical information

Technical Specification for Cable tray



installation and cable laying work

1. Scope :- This specification covers the following major activities; - Fabrication and installation of Mild Steel (MS) support structure for Galvanized Iron (GI) Cable tray. - Installation of perforated GI Cable



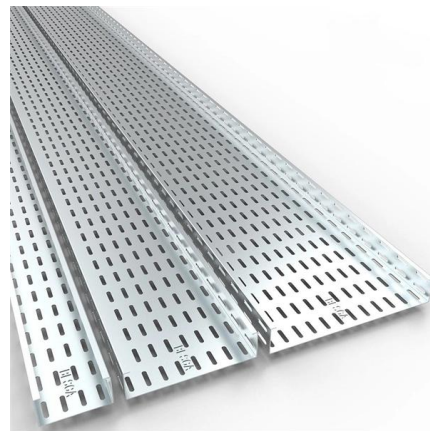
Full cable tray systems specification document

All covers and splice plates must also be hot dip galvanized after fabrication; mill galvanized covers are not acceptable for hot dipped galvanized cable tray. All hot dip galvanized after fabrication steel



Cable tray manual

Where the cable type may be used, cable tray may be installed to support it except as per Section 392.12 which states that cable trays shall not be installed in hoistways or where subject to severe



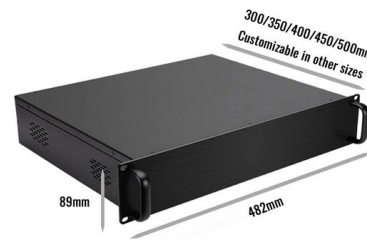
Technical Specification for Cable tray installation and cable laying work

Approval of IPR shall be obtained for site preparation and marking the cable tray routes and locations of cable tray support before proceeding with the erection and installation work.



Technical Guidelines for Cable Tray Installation and

Use dedicated splice plates and bolts. Ensure firm electrical continuity through grounding jumpers at each connection point. Sharp edges or foreign debris inside



Search

Search Up to 36% lower carbon footprint than standard plastic cable ties Globally, only 9% of plastic waste is recycled, and by 2050, up to 12 billion tons could pollute our landfills, waterways, and

Contact Us

For datasheets, pricing, or custom high-speed optical interconnect solutions, please visit:
<https://syropy.com.pl>