

# **Cable tray site survey**





## Overview

---

This site survey checklist is designed for minor cabling works, helping teams scope telephone outlets, structured data cabling, and fibre requirements. This is precisely where a well-structured network cable and wiring site survey template becomes an absolute lifesaver. Think of it as your essential roadmap, a detailed checklist that guides you through every critical aspect of your project site. com Is it available?

Does it contain property lines, building outlines, water and gas pipe lines, power lines (aerial/buried/underground), trees. · What type of floor surface is present?

- Is it adequate?
- Is the door fully-opening or removable?
- Is the door lockable?
- What size (width, height)?

The size must be. Accurate Planning for Efficient Network Cabling Installations  
A successful cabling project begins with a detailed Cabling Site Survey.



## Cable tray site survey

---



### How to Conduct a Proper Site Survey (and Avoid Problems Later)

A proper site survey should never rely solely on the technician's memory. Information must be clear and accessible to the entire team. This includes: Measured floor plans with annotations  
Photos with scale

### Cabling Site Surveys

Cabling Site Surveys AmorServ Tech offers comprehensive cabling site surveys to help you assess and plan your installation needs accurately. Whether you're preparing for a new network installation, an



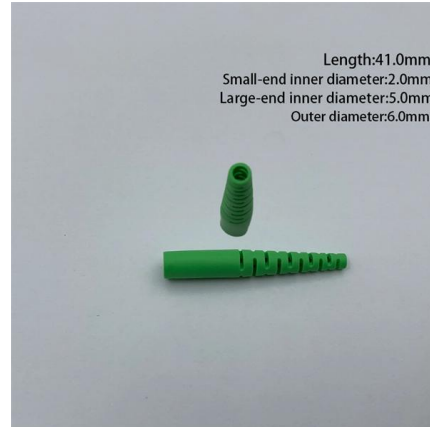
### Cable Inspection Checklist: High voltage, Electrical,

This cable inspection checklist template is free to use and edit, and makes cable inspections quicker, easier and more compliant.



### Method Statement installation of Cable Trays and Ladders

This method statement covers the site installation of the cable tray & ladders and the requirements of checks to be carried out.



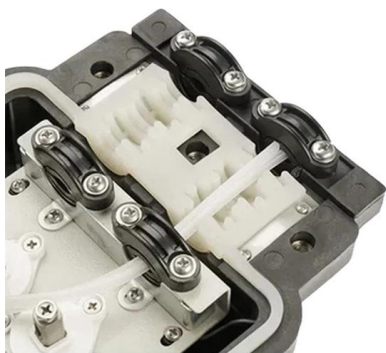
### Cable Install Site Survey Template

A cable install site survey template is a document that provides a structured approach to gathering information about a site in order to plan and



### Cables Connectors Adapters Patch Panels Wall Plates Racks

Since 1995, distributor of cables such as Cat5e, Cat6, Cat7 Ethernet, HDMI, computer cables, audio cables, connectors and adapters. Same day shipping!



### Method Statement for Installation of Cable Tray or Trunking

Provide sufficient space around cable tray for access. Cable Support System Use fish plate to joint & align cable tray where cable tray passes through



## Structured Cabling Survey FAQ's , Data Cabling Surveys

Do you charge for structured cabling surveys? At NM Cabling, we offer free site surveys for a number of our services, including structured cabling. However, in



### Network Cable and Wiring Site Survey Template

This is precisely where a well-structured network cable and wiring site survey template becomes an absolute lifesaver. Think of it as your essential roadmap, a detailed checklist that guides

### Network Cabling Site Survey Check List

- What are customer preferences (cable trays, access floor)?
- The floor surface must not produce dust and static electricity.
- What type of floor surface is present?
- Is it adequate?
- Is the



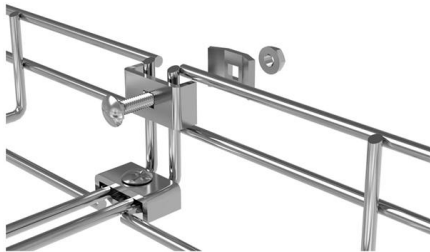
### Telecom Tray Survey Checklist Guide , PDF

The Telecom Tray Survey Checklist outlines a comprehensive process for surveying telecom trays in a complex campus setting. It includes pre-survey preparations, identification and condition assessment



## Network Cable Site Survey Template

The data from your network cable site survey template will directly feed into the network design phase, influencing everything from cable types and lengths to equipment placement and

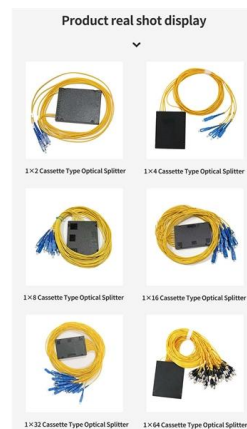


### Conducting a site survey for a data cabling project , Texaport

Get expert advice on conducting a site survey for a data cabling project. Consider key factors like services needed, location, materials, and safety.

### Site Survey & Walkout

Site Survey & Walkout Any network buildout should be preceded by a thorough site survey and field walkout accompanied by engineering and a "Make Ready"



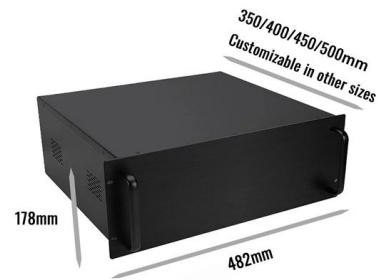
### METHOD STATEMENT CABLE TRAYS

Install cable trays on the supports using correct fittings as required. Cable trays crossing structure expansion joints shall be provided with expansion connectors.



## Telecom Tray Survey Checklist Guide , PDF

It includes pre-survey preparations, identification and condition assessment of trays, connectivity checks, access coordination, safety compliance, documentation requirements, and post-survey deliverables.

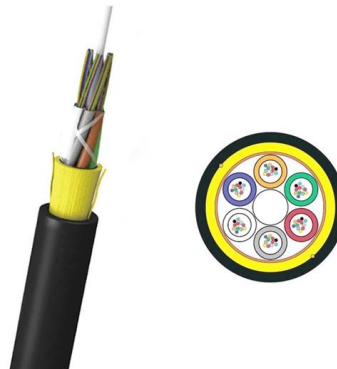


## Cable Route

Cable route refers to the designated path that cables, such as instrument and electrical cables, follow within a facility, often utilizing equipment like cable trays or ladders to ensure proper organization and

## Cabling Site Surveys

A site survey is critical to network design, assessing the physical environment and identifying optimal cabling pathways. Mcon Prosolutions' surveys evaluate the layout, existing infrastructure, and



## Cabling Site Surveys

At INC, we perform site surveys for offices, educational facilities, residential buildings, industrial plants, and more. A simple survey is the start of



## METHOD STATEMENT FOR CABLE TRAY INSTALLATION

7.1.4 Survey the cable tray position or location for possible obstruction and rerouting. In case of discrepancy of cable tray layout against site conditions, shall be informed for final disposition.

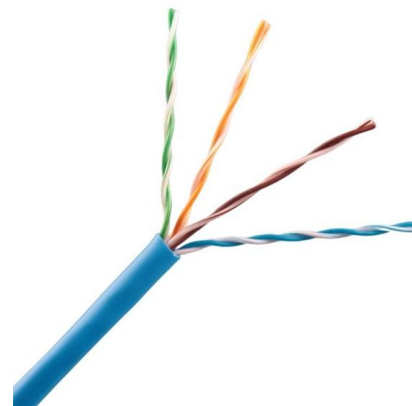


### Physical Site Surveys

Physical Site Surveys The first step towards a successful integrated network infrastructure is a physical site survey. Through a logically documented survey,

### Network Cabling Site Survey Check List

- Is it available? · What are customer preferences (cable trays, access floor)?
- 5.1.16 Dust and Static Electricity · The floor surface must not produce dust and static electricity.
- What type of



### Mastering Cable Tray Installation , Step-by-Step Guide for a Seamless

Learn how to install cable trays correctly. Get the ultimate step-by-step guide on setting up a seamless and reliable cable management system.



## Cabling Site Surveys

Our certified technicians conduct thorough on-site assessments to evaluate your building layout, infrastructure, and networking requirements. This ensures every cable drop, route, and connection



### Pre-Terminated Patch Panel

- Multi-application support
- Flexible configuration
- Modular design



Cable Gland Plug  
28mm Cable Gland Plug



MPO LC up to 16 cores  
MPO direct connector 48 parts



Mounting Bracket  
Semi-open mounting holes

## Fiber Optic Cable Install Site Survey Template

Conversely, an indoor survey might focus more on fire ratings for cables, plenum spaces, ventilation systems, cable tray capacity, and the precise

## Mastering Site Surveys: Cable Plant Technician Guide

Discover a comprehensive guide on conducting site surveys for new cable installations, integrating data analytics with proven techniques.



## Cabling Designer's Site Survey Checklist

What are customer preferences (cable trays, access floor)? The floor surface must not produce dust and static electricity. What type of floor surface is present? Is it adequate? Is the door fully-opening or



## Minor Cabling Works Site Survey Checklist

This site survey checklist is designed for minor cabling works, helping teams scope telephone outlets, structured data cabling, and fibre requirements. It captures



50KW modular power converter

**Flexible Configuration**

- Modular Design, Expanding as Required
- Small/light, V-Mount
- Installed in Parallel for Expansion

**Powerful Function**

- Support PFC/ESS
- Grid Support, Equipped with SVG Technology
- On-Grid and Off-Grid Operation

**Reliable Protection**

- Outdoor IP65 Design
- Sufficient Protection Functions Equipped

## Cabling Site Surveys

AmorServ Tech offers professional cabling site surveys to ensure precise assessments for your network installations, IT upgrades, and cabling projects.

## Contact Us

For datasheets, pricing, or custom high-speed optical interconnect solutions, please visit:  
<https://syropy.com.pl>