

# **Class C cable trays**





## Class C cable trays

---



### Class C Steel Ladder Tray & Fittings Tray & Fittings Cable Tray

Shop for Class C Steel Ladder Tray & Fittings in Tray & Fittings from Westburne where contractors and project managers can find the electrical Class C Steel Ladder Tray & Fittings products they need for



### CABLE TRAY

CODE Manufacturing Ltd. is a leading manufacturer of cable tray systems. We have a 50,000 sq. foot manufacturing facility in Port Coquitlam, B.C. and are 100% Canadian owned and operated. Our

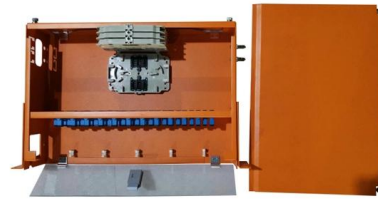
### ZipTray BW Series: Technical Construction Details and

BW4 Series Technical Specs: Siderail Height 4 (100mm) o cCSAus certified Class C/3M o CSA/NEMA Load Rating 97 kg/m, 65 lbs/ft o Building cable management



### Cable Tray / Ladder / Aluminum NEMA Load Class: 20B/16C CSA Load Class

MonoSystems trays marked with CSA load class have been tested (loading, finish and electrical) by UL to CSA standard 126 22.2



### **STAINLESS CABLE TRAY**

SOLID CODE Manufacturing Ltd. is a leading manufacturer of cable tray systems. We have a 50,000 sq. foot manufacturing facility in Port Coquitlam, B.C. and are 100% Canadian owned and operated. Our

### **Products , Unitray Cable Tray Systems, Support, Cable Management**

Unitray is one of the leading manufacturers and suppliers of aluminum cable tray. We manufacture CSA approved Class C, D and E cable tray and fittings with standard 3m, 5m and 6m lengths. Other



### **Cable Tray / Ladder / Aluminum NEMA Load Class: 20C CSA Load Class**

MonoSystems trays marked with CSA load class have been tested (loading, finish and electrical) by UL to CSA standard 126 22.2



### Cable Trays In Hazardous (Classified) Locations , Cable Tray Institute

Section 318-3 indicates that cable tray in hazardous locations shall contain only the cable types permitted in sections 501-4,502-4,503-3, and 504-20. MI Cable MI, mineral insulated cable, with



### STEEL CABLE TRAY

CODE Tray can be found in a variety of industrial, institutional and commercial applications. We have supplied cable tray worldwide and continue to be innovative in our design features and custom

### Tray Cable , Tray Cable Inventory for Industrial Use

OmniCable offers an industry-leading inventory of tray cables for power and control applications. Our selection includes 600V tray cable for industrial use, designed



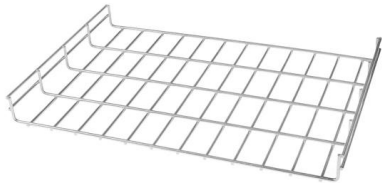
### A Comprehensive Guide to Tray Cable

Since cable trays do not fully enclose cables, which would be the case with cable raceway or ducts, tray cable must conform to strict requirements to

### Types of Cable Typically Used in Cable Tray



Types of Cable Typically Used in Cable Tray The purpose of a cable tray system is to support, route, and protect cable as part of the cable management system.

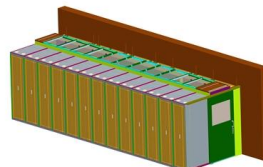


### **Eurostrut Cable Trays , cable tray, cable route and**

Cable trays for industrial and marine use. Includes distribution trays, cable routes and NATO-type models. Request a quote directly via our webshop.

### **Cable Trays , Perforated Cable Trays , Cable Trays**

The company has expertise in manufacturing products like perforated cable trays, ladder type cable trays, wireways/raceways, basket trays, junction boxes, fire



### **Cable Tray Technical Guide A practical guide to product selection and**

Cable Tray Technical Guide A practical guide to product selection and installation This guide for engineers and installers has been developed by ABB as a practical reference regarding cable tray

### **Cable Tray Technical Guide A practical**



### guide to product selection and

Cable tray installed in a hazardous location must contain only those cables that are appropriate for this type of environment as defined in Chapter 5 of the NEC.



### Cable Trays

Cable Trays CABLE TRAY Cable tray is a flexible, field-adaptable way to manage cables throughout your project. The tray itself can be cut and bent to the needs of

### GUIDE CABLE TRAYS TECHNICAL

NEMA VE 1-2017 Specifies requirements for metal cable trays and associated fittings designed for use in accordance with the rules of Canadian Electrical Code, Part I and the National Electrical Code®



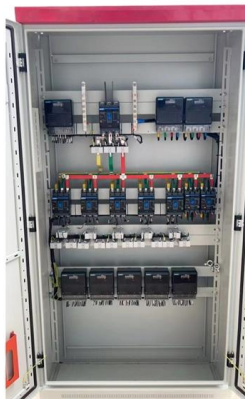
### CableTray Book English

Aluminum cable tray Straight lengths -- Tray bottom types: ladder, ventilated and solid trough Ladder Extra wide aluminum rungs are welded to extruded aluminum I-beam side rails. Every second rung is

### Codes and Standards , Cable Tray Institute



Covers construction and test requirements for continuous, complete nonmetallic systems of ladder, ventilated, solid bottom cable trays, or channel type trays, intended for the support of power or



### Cable Tray for PDF

Cable Trays have become an integral part of industrial and commercial construction by offering quick, economical and flexible solutions. Cable trays are capable of supporting all types of wiring such as

### Armorduct Systems Ltd , Manufacturing Cable

Armorduct Systems are a UK manufacturer of steel cable management systems including cable trunking, tray, basket, floor boxes, power track & more. Wide



### Cable tray manual

Nearly every aspect of cable tray design and installation has been explored for the use of the reader. If a topic has not been covered sufficiently to answer a specific question or if additional information is



## CABLE TRAY SYSTEMS GUIDE

The design and cost of the cable tray is greatly affected by this designation. In order to determine the most appropriate and economical system, a class should be selected that reflects the actual total



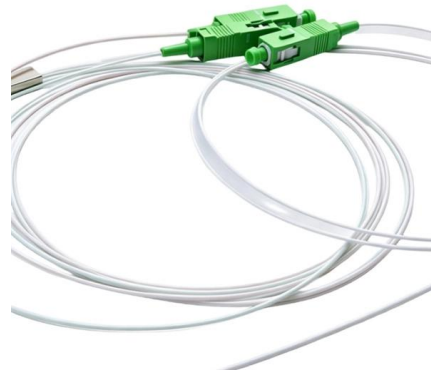
### Cable Trays/Ladder Tray

These cable tray are manufactured using the highest quality material and are available in various sizes. Click the image below for full PDF specs on any of our



### T& B® Cable Tray quote specifications requirements

1 now following two questions: ds er foot does the cable tray need 4b. How often is the tray supported? Both the "pounds per foot" and "how often the tray is supported" must e opleted if the 5. Siderail



### KwikRail Tri-fold Brochure

Applications The system is ideal for NEMA 12A and 12B (CSA class C-3 and D-3M) load classes for small power and instrumentation tray cable management in multiple applications.



## Contact Us

---

For datasheets, pricing, or custom high-speed optical interconnect solutions,  
please visit:

<https://syropy.com.pl>