

# **Color Sensor and Fiber Optic Amplifier**





## Color Sensor and Fiber Optic Amplifier

---

### R55F Series Color Contrast Fiber Optic Sensors



Banner's R55F fiber optic sensors have the capability to detect the presence of caps regardless of their color or size - a clear advantage in an industry that has a wide

### (LOT OF 2) OMRON E3S-X3CE4 Fiber Optic Sensor (12-24VDC,

Brand: OMRON MPN: E3S-X3CE4 Model: E3S-X3CE4 Type: Fiber Optic Amplifier / Photoelectric Sensor Supply Voltage: 12-24 V DC  $\pm 10\%$  Current Consumption:  $\leq 50$  mA Output Type: NPN (DC



### Fiber amplifiers

FX-300 fiber amplifier with blue, green and infrared LED type for dedicated applications. The industry's leading fiber amplifier in sensing performance. Colour

### 1PCS Fiber Optic Sensor Probe Elbow Through-beam M3 M4 M6 Amplifier

1PCS Fiber Optic Sensor Probe Elbow Through-beam M3 M4 M6 Amplifier NPN PNP Photoelectric Optical Sensor Switch (GF1-W81)



### Fiber-Optic Cable Amplifiers , wenglor

Fiber-optic amplifiers are combined with plastic or glass fiber-optic cables and are used in applications with small installation space or high temperatures. The



### Fibre Optic Sensor Window Type 12-24 V DC NPN PNP120 x 120 mm Optical

Fibre Optic Sensor Window Type 12-24 V DC NPN PNP120 x 120 mm Optical Light Barrier Switch for Push Detection (120 mm Pnp Amplifier)



AOC  
QSFP28 to 4\*SFP28  
100G  
OM3/OM4



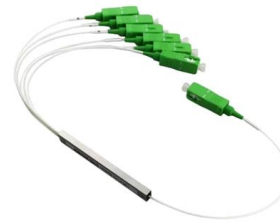
### Multi-outputColor Fiber Optical Amplifier Sensor

Multi-outputColor Fiber Optical Amplifier Sensor The amplifier supports external input functions, allowing users to adjust sensitivity settings, select data libraries, and



**Fiber Optic Amplifier White Light Source Color Mark Sensor (GX4-F1)**

Fiber Optic Amplifier White Light Source Color Mark Sensor (GX4-F1) : Amazon.ca: Industrial & Scientific Fields with an asterisk \* are required Price Availability



**Fiber Optic Sensors and Amplifiers**

Omron's high-performance fiber optic sensors and amplifiers come in a wide variety of configurations to meet your specialized requirements.

**Photoelectric Sensors , Color Mark Sensor , White LED**

White LED light source enables stable detection of subtle color contrasts of dark colors that a sensor with red LED light source may have had difficulty in detection.



**Fiber Optic Amplifier White Light Source Color Mark Sensor (GX3-T1)**

Fiber Optic Amplifier White Light Source Color Mark Sensor (GX3-T1) : Amazon.ca: Industrial & Scientific Fields with an asterisk \* are required Price Availability

**Fiber Optic Sensors and amplifiers ,**



**OMRON, Europe**

Download datasheets, manuals and brochures.  
See our systems in use and consult our experts.



**2pcs FT-310 Probe Amplifier Sensor Fiber Optic Cable PT-310 PT**

Brand: IPNDKBFL £4739 Save 15% on any 2  
Qualifying items , Terms Colour: Pt-320 2m See 0  
options with no featured offers <- 1 -> Sign in to  
continue Transducers Sensors 2pcs FT-310



**Fiber-optic amplifier P1XD202 , wenglor**

Despite closely positioned queries, there is no  
mutual influence in multi-unit operation. All  
sensor information is also provided via the IO-  
Link process data.



**1PCS Fiber Optic Sensor Probe Elbow Through-beam M3 M4 M6 Amplifier**

1PCS Fiber Optic Sensor Probe Elbow Through-  
beam M3 M4 M6 Amplifier NPN PNP Photoelectric  
Optical Senosr Switch (GX4-T1)





## Photoelectric Sensors , Laser Sensor , Digital Amplifier

photoelectric sensors including fiber sensors, displacement sensors, vision sensors, LED lightings for machine vision, non-contact thermometers and accessories for



## Fiber Optic Color Sensors

The Colour Sensor is a fibre optic amplifier made specifically for recognition of 1 or 1 to 4 colours. Teaching of the colours is easily performed by means of the "Teach-in " function.

## Used SunX FX-412 NAVI Digital Fiber Optic Sensor Amplifier, NPN, 12

From our inventory we are selling a SunX FX-412 NAVI Digital Fiber Optic Sensor Amplifier, NPN, 12-24VDC, M8 3-Pin. Specifications:, Model # : FX-412, More Information :, Fiber Sensor Amplifier,



## 2pcs FT-310 Probe Amplifier Sensor Fiber Optic Cable PT-310 PT

Transducers Photoelectric Sensors 2pcs FT-310 Probe Amplifier Sensor Fiber Optic Cable PT-310 PT-320 PT-330 PT-340 PT-350 5M See more product details Report an issue with this



### CSM\_FiberSensor\_TG\_E\_2\_1

What Is a Fiber Sensor? A Fiber Sensor is a type of Photoelectric Sensor that enables detection of objects in narrow locations by transmitting light from a Fiber Amplifier Unit with a Fiber Unit.



### FS-M1P fiber optic sensor amplifier

Options Available Colour Fs-m1p Browse all available options Report an issue with this product or seller



### Fiber Sensors

The Fiber Unit can be installed close to the sensing object. This allows you to freely select where to install the Fiber Amplifier Unit. 4. Virtually No Sensing Object



### 1PCS Intelligent Color Recognition, Fiber Optic Amplifier

About this item Limit Switches 1PCS Intelligent Color Recognition, Fiber Optic Amplifier, White Light, Color Mark Sensor, PM-A11 See more product details Report an issue with this product





## Fiber Optic Sensors

Fiber optics feature two distinct components, an amplifier and sensor heads. The amplifier contains "the brains" of the sensor as well as the light source. The fiber

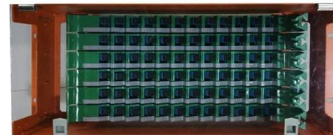


## Fiber Optic Amplifiers

Fiber optic sensors are small enough to fit in confined areas and can be positioned precisely where needed with flexible fibers.

## RGB Optical Fiber Sensor Factory Color Detection Fiber

RGB Optical Fiber Sensor Factory Color Detection Fiber Optic Sensor, Find Details and Price about Amplifier Fiber Amplifier Control from RGB Optical Fiber Sensor



## Contact Us

For datasheets, pricing, or custom high-speed optical interconnect solutions, please visit:  
<https://syropy.com.pl>