

Columbia installs micro-module rack-mounted server rooms





Columbia installs micro-module rack-mounted server rooms



Weather MicroServer(TM) , Columbia Weather Systems

View Weather Underground Station Display Weather Data on Web Page via Cloud Weather Server The Weather MicroServer is a data logger and powerful

Server Rack Buying Guide: Wall-Mounted, Floor

In today's digital landscape, the server rack is the backbone of IT infrastructure for small offices, enterprise data centers, and industrial



Rackmount Servers , Supermicro eStore

Rackmount Superior Performance, Efficiency and Time-to-Market for Rapid Adoption Industries Broadest Range of Rackmount Data Center Servers Optimized for



Practical Options for Deploying Small Server Rooms and Micro

This paper is written to comprehend this time constraint and summarizes the most practical improvements to power, cooling, racks, physical security, monitoring, and lighting for small server



Weather MicroServer User Manual , Manualzz

User manual for the Columbia Weather Systems Weather MicroServer, a device that monitors and logs weather data from various weather stations.



1U

Mainstream Server CPU: Single Intel® Xeon® E3-1200 Processor Chassis: 1U / 1 Node Drive: 1 Fixed 3.5" SATA3 RAM: 4 DDR4 DIMM Slots Network Ports: 2



How to Rack a Server: Essential Tips and Step-by-Step

Rack a server like a pro! Our step-by-step guide covers server rack setup, hardware installation, and cable management tips. Safely mounting your





Rack Mounted Servers: The Ultimate Guide to Choosing

These servers are designed to be installed in a rack cabinet, which provides proper cooling and management for the data center. When choosing a



How to rack a server: Step by step installation

A server chassis is designed around its ability to be rack mounted. Over time, the industry adopted standards to make server rack installation easier

Linux Server Deployment and Hardware

Explore Linux server deployment, covering hardware identification for server systems, SCSI devices, SAN configurations, and RAID levels. Then, let's delve into configuring ZFS and BTRFS filesystems.



- IP65/IP55 OUTDOOR CABINET
- ALUMINUM
- OUTDOOR ENERGY STORAGE CABINET
- OUTDOOR EQUIPMENT CABINET

Installing a rack-based server

Installing the server using four people Before you install the system into the rack, you must remove components from the chassis so that it's less heavy and easier to lift. Read this section



VMS Servers

HikCentral VMS servers come with pre-installed HikCentral Professional software and licenses, including rackmount servers for stable, 24/7 operation in large projects and tower workstations.

Length:14.5mm
Small-end inner diameter:2.0mm
Large-end inner diameter:3.5mm
Outer diameter:5.2mm

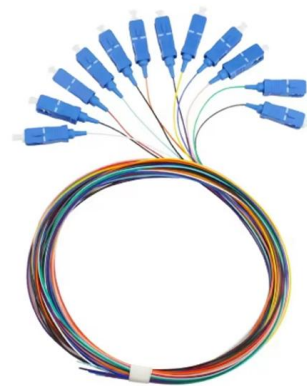


Exploring Rack Servers: The Scalable Solution for Data

Rack-mounted servers can be housed in secure server rooms or data centers, providing a controlled environment that enhances physical security.

Modular Data Center

As an emerging data center solution, micro-module computer rooms will become a new choice for future data center construction.



Rack Mounted Servers: The Ultimate Guide to Choosing

Rack mounted servers are a type of server hardware that is designed to be installed in a rack, also known as a cabinet, in a data center or server room.



SuperServer®

Install the server into the rack by lining up the rear of the chassis rails with the front of the rack rails. Slide the chassis rails into the rack rails, keeping the pressure even on both sides (you may have to



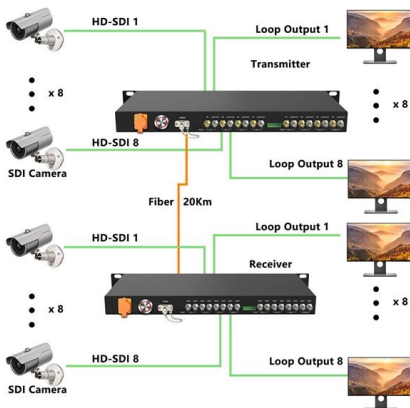
5015A-EHF-D525_1.0 db

The Supermicro SuperServer 5015A-EHF-D525 is a single processor, 1U rack-mount server. The 5015A-EHF-D525 is comprised of two main subsystems: the SC502L-200B chassis and



SC822 Chassis

If installed in a closed or multi-unit rack assembly, the ambient operating temperature of the rack environment may be greater than the room's ambient temperature.



InfraSuite Modular Server Rack System

These modular racks are a breeze to install, to upgrade, and to maintain. Each one of them incorporates tool-less reversing front and rear doors with U-position



Choosing the Right Rackmount Server Case: 1U, 2U,

Understand how 1U, 2U, 3U, and 4U rackmount server units vary in order to optimize your server requirements to select the most appropriate piece of



Product Photography

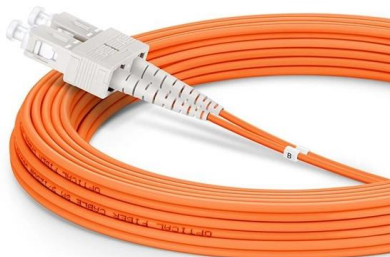
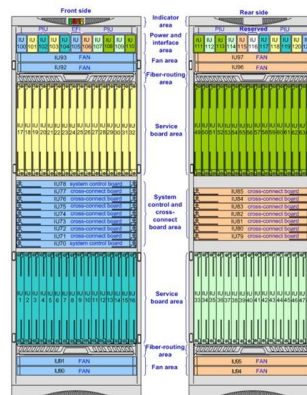


InfraSuite Modular Server Rack System

By opting for a Delta modular rack cabinet, data centers choose the ultimate combination of convenience, flexibility, and safety. Delta manufactures a 42U

SYS-510P-WT SYS-510P-WTR SYS-510P-WTR-EU

Installing the Server into a Telco Rack To install the server into a Telco (or "open") type rack, use L-shaped brackets (p/n MCP-290-00015-0N) on either side of the chassis (four total).



Rack Mounting FAQ

For local IT or audio/IT equipment installations, it is common in back-office environments to have one half or full height rack, self-contained and sometimes



How to Plan a Server Rack Installation: A Beginner's Guide

Setting up a server rack for the first time might feel a bit intimidating, but don't worry! This guide will take you through all the essential steps, from



Rack Mounting 101

Your server (s) will be mounted in the rack. A rack is a metal framework that houses electronic equipment and usually contains bays designed for a piece of equipment like a server.

How to Power Server Cabinet PDUs from a UPS System

A blog guide on how to connect and power server cabinet PDUs from uninterruptible power supplies covering PDU outlet types, UPS ratings and



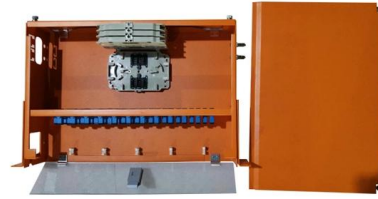
Your guide to avoiding server rack setup issues

Server rack setup can be anything but simple. The increasing size of IT gear -- both inside and outside the rack -- poses problems for older or improperly sized racks. Test-fit any gear,



IBM Documentation

IBM Documentation. You are not entitled to access this content



Rack Mount Servers and Switches for Data Centers: A

This white paper explores the key aspects of rack mount servers and switches, their critical role in data center operations, and considerations for their

Contact Us

For datasheets, pricing, or custom high-speed optical interconnect solutions, please visit:
<https://syropy.com.pl>