

Configuration of Core Switch Connecting to Switches





Configuration of Core Switch Connecting to Switches



Switch Stacks

Meraki switches allow for physical stacking on select switch models so you can easily manage all of your switches and get physical redundancy in the

Two-Tier Core

Configure Two-Tier core switches as a VSX pair for Layer 2 aggregation of the data center access switches, IP data center services, and routing to the main campus.



Introduction to Core Switch Configuration

A switch that functions as part of a router and operates at the third layer of the OSI network standard model, the network layer. The most important purpose of the layer 3 switch is to speed up the data

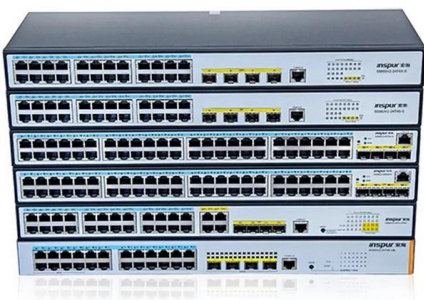
Connecting core switches

In regards to the core switches, I have 2 X 3750v2 switches acting as core 1 and core 2. In the course Jeremy connects these up using sfp modules



Introduction to Core Switch Configuration

Switches should be able to achieve wire-speed switching, which is the rate at which data is transferred on a transmission line, to minimize switching bottlenecks.



The Network DNA: Networking, Cloud, and Security

Master networking, cloud, and security with in-depth analysis, tutorials, and research. Stay ahead of the curve with our expert tech blog.



Solved: Redunancy with two switches core

Hello everyone, I have a customes have just bought ttwo switches core (L3), his today diagram network is: Access Switches come to one Switch Core





SME Network Solution Typical Configuration Examples

"Gateway + Core Switch + Aggregation Switch + Access Switch + WAC + AP" Networking: Local Entire Network Deployment (EasyWeb) "Gateway + Core Switch + Aggregation Switch + Access Switch +

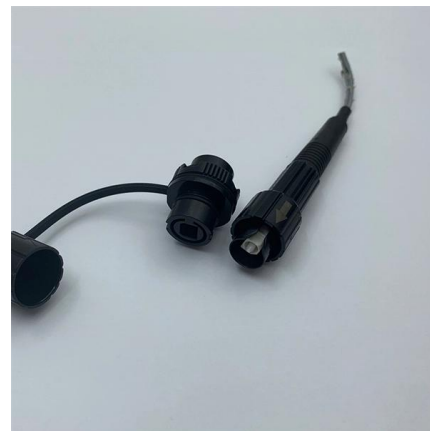


Core Switch vs. Distribution Switch vs. Access Switch

Comprehensive guide to Core, Distribution, and Access Switches. Roles in the network and important parameters explained.

layer 3 connection between core and distribution switch

If I have suppose 30 vlans terminating on a distribution switch, how do I advertise them to a core switch through a routed layer 3 link? A sample configuration of creating a layer 3 link between



What is a Core Switch , Functions and Difference over Normal Switch

Core switches as expected are designed to be quicker than aggregation switches. This is due to the core switch's connections with several aggregation switches. Another major difference is



Network Switches

Cisco network switches deliver performance, flexibility, and security. Cisco switches are scalable and cost-efficient and meet the demands of hybrid work.



Core Switch & Access Switch Connections

I want to get 2x Cisco Catalyst WS-C3750X-24T-S Switches (and stack them). ESX servers, other servers and routers will be connected to the core

Best practices when configuring an Access switch stack to Core

Make sure the core switch is the root bridge, and enable portfast and BPDU guard on all access interfaces. Do your routing on the core switch, with an L3 transit to the firewall.



SME Network Solution Typical Configuration Examples

"Gateway (AR720) + Core Switch + Access Switch + AP + AR180" Networking: Huawei eKit Cloud Management "Gateway + Core Switch + Access Switch + WAC + AP" Networking: Local Entire



Understanding the Core Switch: Key Differences and Uses

The significance of the core switch in building and sustaining a resilient network infrastructure is paramount. As the central data traffic hub core



Understanding Core Switch: What It Is and How to

The core switch plays a pivotal role in managing substantial network traffic, necessitating a forwarding rate that typically outpaces that of access and

What Is a Core Switch in Networking?

Unlike access switches, which connect directly to end-user devices, the core switch focuses on aggregating and routing traffic between other



Core Switches: The Pillar of Network Infrastructure

Consider the switch's capacity to handle additional devices and increased data traffic. Conclusion Core switches truly are the heartbeat of any

VLAN



In the process, he independently reinvented transparent bridging, the technique used in modern Ethernet switches. However, using switches to connect multiple

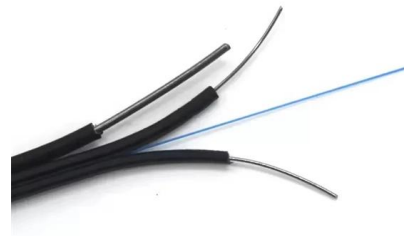


8 Steps to Configure Your Network Switch

Learn how to setup a network switch with ease. Switches allow you to send and receive information efficiently and securely. Get setup today!

New UniFi Dream Machine BEAST, FG Core, 100GbE Tech and

The devices observed represent a noticeable increase in port density, throughput capability, and overall positioning compared to the current UniFi lineup. Four specific devices stand



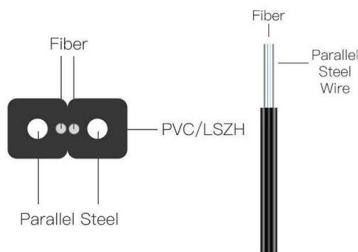
FS Community

Hier sollte eine Beschreibung angezeigt werden, diese Seite lässt dies jedoch nicht zu.



Cisco Catalyst 9000 Switching Family

Benefits of Upgrading to Cisco Catalyst 9000 Switches Securely connect everyone and everything, everywhere, every time.



Linking of multiple Ethernet switches -- cascading, stacking and

Therefore, the best way to connect multiple Ethernet switches depends on your specific network configuration and requirements. Deep Dive: A Closer Look at Switch Cascading, Stacking,

Configuring the Core Switch

In this scenario, IP addresses of the interfaces connecting the core switch to the BRASs and firewalls and OSPF need to be configured on the core switch, so as to implement connectivity



Core Switch and Access Switch configuration

HI TEAM, I have a 2 3850 core switch which is on HA and 2960x for my access switch, i requiried help on 2 things. 1) How to enable LLDP-MED/CDP on 2960 switch 2) Voice VLAN should



Solved: Core Switch

The diagram only shows one connection from the edge switch to the core switch, so when one switch goes down you are always going to isolate at least one switch.



Contact Us

For datasheets, pricing, or custom high-speed optical interconnect solutions, please visit:
<https://syropy.com.pl>