

Connecting the optical module to the optical terminal box





Connecting the optical module to the optical terminal box

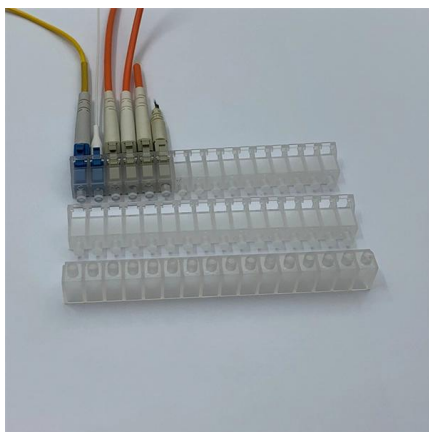


Guide to Optical Line Terminal (OLT) Classifications:

In modern communication networks, optical line terminal (OLT) is the core device to realize point-to-multipoint (P2MP) in passive optical network (PON)

What is ONT? The Engineer's Guide to Optical Terminals

When the ISP's central OLT (Optical Line Terminal) transmits data, it fires 1490nm light pulses down the fiber. The ONT catches those photons using a BOSA (Bidirectional Optical Sub-Assembly),



What is an optical network terminal (ONT)?

What is an optical network terminal (ONT)? An optical network terminal (ONT) is a device that serves as the endpoint of an optical network,

Guide of Fiber Optic Terminal Box

Terminal boxes are suitable for a dispersed network structure after deploying the optical splitter. They are composed of fixed cable components,



What is Optical Network Terminals (ONT)?

By demystifying the Optical Network Terminal, you have unlocked a deeper appreciation for the technology that powers your digital life and gained the



What is an Optical Fiber Terminal Box

Optical Fiber Terminal Box is a crucial component in today's FTTH networks, primarily used for terminating, connecting, and managing.



How to Connect Fiber Optic Cables to SFP Modules , Weunion Guide

Blog A Comprehensive Guide to Connecting Fiber Optic Cable to SFP Module May 30, 2025 In high-speed data networks, the seamless integration of fiber optic cables with SFP (Small



A Quick Guide to ONT (Optical Network Terminal)

Understand how an Optical Network Terminal (known as an ONT) functions, how it differs from Optical Line Terminal (OLT), and its Role in

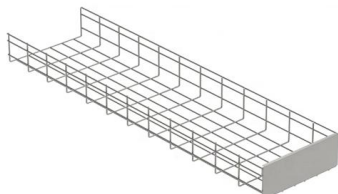
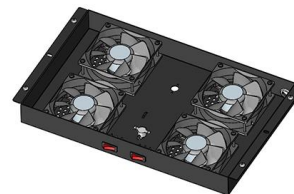


Illustration of How to Connect the Terminal box in FTTH

2. Connect the optical fiber jumper to the optical transceiver, the purpose is to convert the optical signal into an electrical signal. 3. The fiber optic

The Ultimate Guide To Choosing The Right Fiber

With a compact rack or wall mounting design, the Fiber Termination Box is a space-saving solution for fiber optic installation, especially when it is not



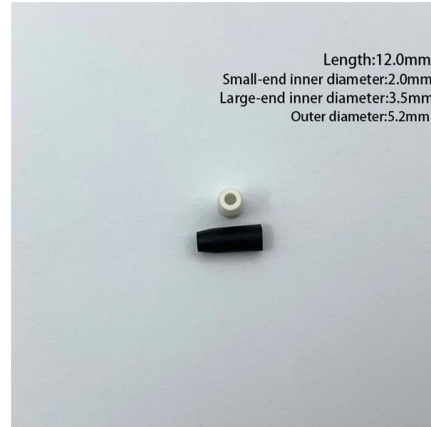
How to Connect Fiber Optic Cables to SFP Modules , Weunion Guide

Align the module with the device's SFP port, ensuring TX/RX labels match the cable's direction. Gently push the module until it clicks into place (a latch will secure it).



Guide of Fiber Optic Terminal Box

Fiber optic terminal box is a device that serves as an interface to connect the incoming fiber optic cable with the butterfly cable, either inside or



Cisco Catalyst PON Series Switches Hardware Installation Guide

The console port connects the Cisco Catalyst PON Series OLT to a PC running Microsoft Windows or to a terminal server and uses the RJ-45 crossover cable. The RJ-45 console port

OPTICAL AA17053 Fiber Optic Terminal Box User Manual

Learn how to safely install your fiber optic cables with the AA17053 Fiber Optic Terminal Box. This user manual provides step-by-step instructions and usage information, including the required installation



What You Need to Know About Fiber Terminal Box

It provides a centralized location for connecting optical fibers to other network elements such as switches, routers, or optical network terminals (ONTs),





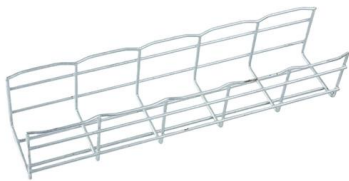
Optical Network Terminal (ONT) User Guide

Optical Network Terminal (ONT) User Guide
Updated April 2021 seethelight from Sky uses fibre to bring you high-speed internet and therefore uses some equipment you may not be familiar with. This guide



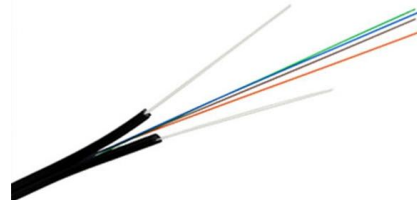
Verizon Fios ONT Box: Definition, Setup,

Discover what a Verizon Fios ONT Box is and how it works. Get step-by-step instructions for installation, common issues, and connecting devices.



TR-3552: Optical network installation guide

Devices are connected in single or dual (counter rotating) rings. With counter-rotating rings (most common), two rings transmit in opposite directions. If one device fails, one ring will automatically loop



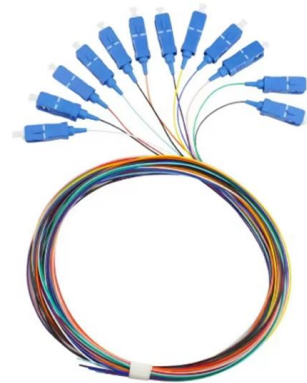
Fiber Access Terminal Box

The optical fiber terminal box is the terminal connector of an optical cable. One end is an optical cable and the other end is a pigtail.



Optical cable terminal box and optical fiber distribution box

The optical cable terminal box is a box where both ends of the optical fiber network are prepared to directly divide jumpers to connect to optoelectronic equipment. The size of the terminal

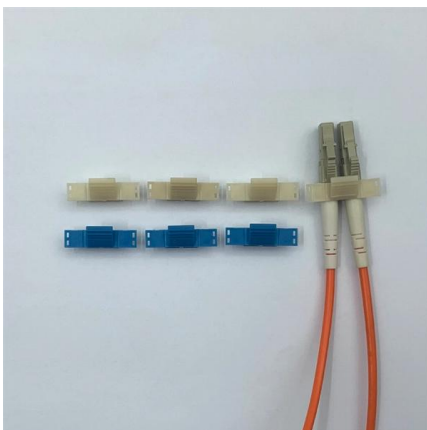


Optical fiber terminal box

After the optical fiber terminal box is successfully installed, not only can the optical fiber and pigtail be protected and connected, but also the interference of the environment on data

12 Core Fiber Optic Terminal Box

The 12 core fiber optic terminal box is light in weight and small size, flexible to use in different applications in optical cabling. Installation of the fiber optic terminal box: Peel the cable, take off the



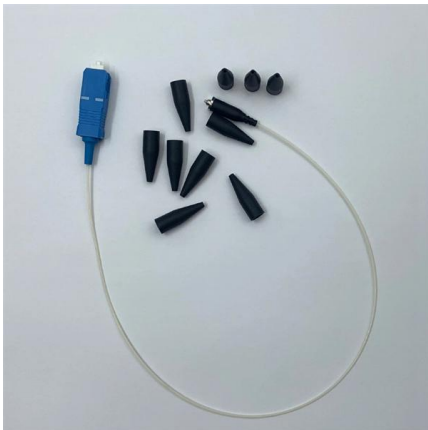
The Function and Type of Optical Fiber Terminal Box

There should be an appropriate space and method in the optical fiber terminal box to make the wiring of this part of the optical connection line clear,



OPTICAL TERMINATION BOX

Description Fiber optic terminal box is available for the distribution and terminal connection of various kinds of optical fiber system, especially suitable for mini-network terminal distribution, in which the



Installing Optical Fiber Communications Cables

Connect the peripheral optical fiber cable to the ATB, splice the optical fiber cable and the optical jumper, and then wind the spliced cable around the fiber spool on the ATB.

What Is an ONT & How Is It Used in Fiber Networks?

One key component is the ONT (Optical Network Terminal) - the unsung hero of your fiber connection. Nowadays, as online demands grow, more people are



- ✓ Slow Axis Aligned (0°) - for standard sensing applications
- ✓ Fast Axis Aligned (90°) - for special modulation applications
- ✓ 45° Axis Aligned - for depolarizer applications



The Function and Type of Optical Fiber Terminal Box

The straight-through terminal box has only one outer hole for connecting the receiving line, while the branched terminal box has several



The Types of fiber Optical Terminal Boxes and How to

A box that comes with clear installation instructions and is easy to access for maintenance will save time and effort in the long run. By considering



Connections among Fiber Terminal Boxes & Patch

Step 1: Access outdoor fiber optic cables into fiber terminal box for the purpose of splicing the optical fiber cable and fiber optic pigtail, leading out it by using fiber

Contact Us

For datasheets, pricing, or custom high-speed optical interconnect solutions, please visit:
<https://syropy.com.pl>