

Core switch cannot obtain IP address





Overview

Here are some solutions to resolve the issue of a switch not finding an IP address: Check the Router's DHCP Server: Verify that the router's DHCP server is enabled and responding to requests. Restart the Router and Switch: Restarting the router and switch can often resolve the issue. But from yesterday many users (LAN and Wifi) are facing issue as they are getting disconnected from network due to not getting any ip via DHCP from core switch.



Core switch cannot obtain IP address

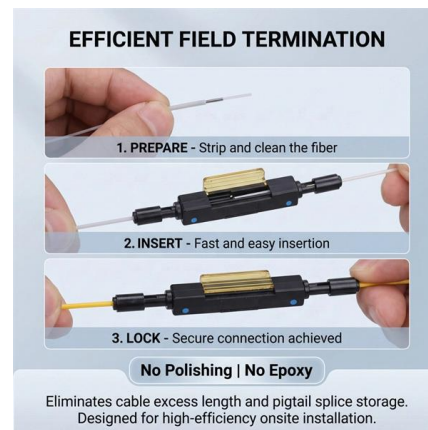


Event ID 4199 and Windows client can't get an IP address from the

If the switch or router sends out an address resolution protocol (ARP) probe for the client while the Windows client is in the duplicate address detection (DAD) phase, the client detects the

Internet not reaching Core/Access Switch

It is currently using the lan interface, the address that you need to use for the NAT is the WAN outside interface with the public IP - in this case gi0/0/0. The Router is set to use the wrong



Solved: PC not getting IP from Switch

Solved: Hi Everyone, I have 2 switches running as HSRP and both have DHCP config on them. Both these switches have connection to 3rd switch where PC is connected. Connection

unable to obtain IP

Do your uplink ports match between the switches, same native vlans and allowed vlans if trunked? Have you compared the DHCP discovery message from the JetNet to one from a port on



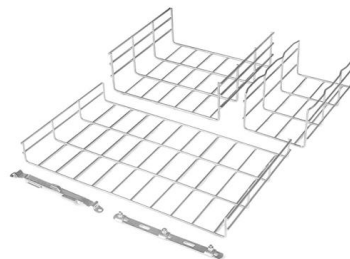
5 Ways to Fix "Failed to Obtain IP Address"

Fortunately, there are several methods to troubleshoot and resolve this network connectivity problem. In this article, we will explore five effective ways to fix the "Failed to Obtain IP



DHCP Troubleshooting: PCs Failing to Obtain IP Address & Core

In this troubleshooting video, I worked through a scenario where PCs 1 and 2 could not obtain an IP address from a core switch DHCP server.



Troubleshoot DHCP Client Connectivity Issue on a

This document describes various DHCP-related issues encountered by wireless clients when connected to a Cisco 9800 Wireless LAN Controller.



Unable to get an IP address when connected through a switch

I have an issue whereby if I plug a laptop into the port in the wall, I get an IP address. If I use another cable, I get an IP address. If I plug a switch in and use the two known good cables with

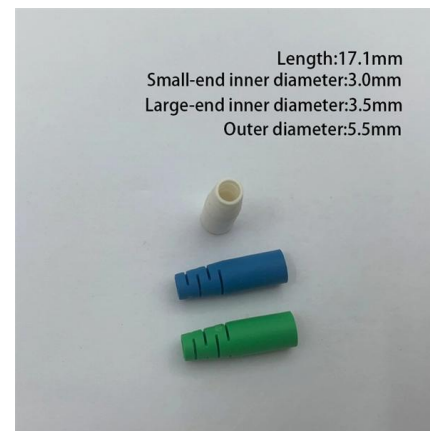


Why is my switch unable to obtain IP address?

How do I fix my Nintendo Switch unable to obtain IP address? If the Nintendo Switch console is unable to obtain an IP address from the wireless router, manually entering the IP address, subnet mask and

cisco switch not getting IP address

VLAN is up and configured for DHCP on a new Cisco switch but it's not getting an IP address from the DHCP server. I'm sure it's something very simple but the solution is just not



Solved: Cannot get IP from DHCP

Solved: Sir, I have a simple setup of a switch (3524) and a stand alone AP (1210). The AP is configured as DHCP server. The problem is my





Why can't a Switch find IP address?

When a switch fails to obtain an IP address, it can be frustrating and hinder network communication. In this article, we will explore the reasons why a switch may not be able to find an IP



DHCP Relay Issue: Router Can Ping DHCP Server, but

I'm setting up a network where multiple subnets share a single DHCP server. The router can ping the DHCP server, but end devices connected to the

A Device Functioning as a DHCP Client Cannot Obtain an IP Address

DHCP clients obtain IP addresses and other network configuration parameters by exchanging DHCP packets with the DHCP server. After the DHCP client function is configured on an



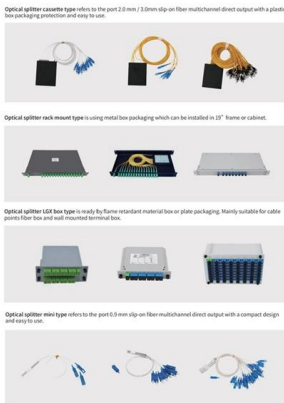
How to Find IP Address of a Switch?

How to Find IP Address of a Switch? Understanding Network Addressing Finding the IP address of a switch is crucial for network management. This article offers a comprehensive guide on



Can't obtain IP address : r/Ubiquiti

A wireless device tries to connect to an SSID but is not able to obtain an IP address. The physical connection is established. I even see the device in the 'Clients' section of the Controller, but it does



5 Ways to Fix "Failed to Obtain IP Address"

Without a valid IP address, a device cannot communicate on the network, hindering your ability to access the internet or share data with connected devices. But fear not; there are multiple

Help, my switch can't connect to the internet (2110-2963)

Everything worked great until today when I've been welcomed by an error saying that my switch can't obtain an IP address (error 2110-2963). I tried to reboot/unplug and plug everything.



How to Fix the "Failed to Obtain IP Address" Error on

If your Android phone still displays a "Failed to Obtain IP Address" error, your phone's network settings likely have issues. You can fix these settings



ECS5520 Series CLI Reference Guide

You can manually assign an IP address to the switch. You may also need to specify a default gateway that resides between this device and management stations that exist on another



Hi, I am helping someone resolve their wifi network at a small hotel they own They have about 10 unifi AP devices throughout however they are reporting that they tried connecting new

Switch error "unable to obtain an IP address"

Hello! The last days, my Nintendo Switch cannot login to internet via LAN (adapter + ethernet cable). It was working just fine but after some changes in my network (I removed a switch network device (not



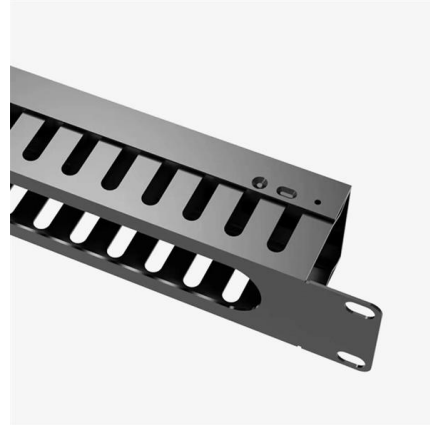
What to do if your client cannot obtain an IP address

To make your Windows client obtain an IP address automatically, go to Control Panel -> Network and Internet -> Network and Sharing Center ->



Re: CoreSwitch MACAddress everywhere

Here the answer from one of our engineer: 'The "core switch" is probably an L3 switch, meaning it replaces MAC addresses. So any traffic from end device to FGT through switch will arrive



HELP: I cannot get IP addresses from my DHCP server for my

My DHCP server doesn't assign IP addresses to my PC's. I configured dhcp for VLAN 70 and VLAN 20. But it doesn't give out IP's. Does this have anything to do how my network is built up?

Android Device Stuck on "Obtaining IP Address"? 8

Without an IP address, your device is not registered on the network, and thus it's not allowed to do anything on it. When your phone gets stuck on the



User not getting IP via DHCP from Core Switch

DHCP is configured in core switch. But from yesterday many users (LAN and Wifi) are facing issue as they are getting disconnected from network due to not getting any ip via DHCP from



Cannot ping an IP from Core Switch, but can do it from my PC

172.16.32.1 is the gateway for your subnet but probably isn't the ip address your core is attempting to ping from. I'm guessing your core switch is attempting to ping from a subnet not allowed across the



A device can be pinged from core switch (router) but not the switch it

This is likely related to how the vlans are setup with the gateways on the core switch, and the vlan where the mgmt interface is on the edge switch where the device is connected.



Contact Us

For datasheets, pricing, or custom high-speed optical interconnect solutions, please visit:
<https://syropy.com.pl>