

# Distance between power distribution box and monitoring equipment installation





## Distance between power distribution box and monitoring equipment



### Safety Clearance Recommendations for Electrical Panel

Clearance Tables includes working space and clearance around indoor electrical panel, Circuit Board (NES 312.2), clearance for conductor entering

### IEEE 525-2007\_accepted

1.2 Purpose The purpose of this guide is to provide guidance to the substation engineer in established practices for the application and installation of metallic and optical cables in electric power



### Clearances and creepage distances in LV electrical

For designers, this is a way to build business - by specifying a more reliable equipment, system or assembly. In this post, I'm going to outline reasons

### Cautions and Requirements for Installation of

Distribution box is a low-voltage distribution device which assembles switchgear, measuring instruments, protective appliances and auxiliary equipment in a closed



### **Electrical installation handbook Protection, control and**

The scope of this electrical installation handbook is to provide the designer and user of electrical plants with a quick reference, immediate-use working tool. This is not intended to be a theoretical

### **Requirements for Electrical Installations**

Electrical equipment shall be selected and erected so as to avoid any harmful influence between the electrical installation and any non-electrical installations envisaged.



### **Electrical Installation Method Statement for MDB and**

Below is a precise electrical installation method statement that covers installation of main distribution board and MCC panel board in compliance with the approved



## The installation requirements for the distribution box

Choosing the right distribution box isn't one-size-fits-all. You need to consider where it will be used, how much power it needs to handle, and how well



## Meter installation guidelines

Meter installation guidelines Electric meters The National Electric Safety Code requires an unobstructed working space that extends from the floor or ground to a

## Building structures and power equipment clearances

Failure to consider the distance between a structure and power equipment poses significant safety risks or costly relocations. The bottom line: Ensure your building



## IEC Phase to Phase Clearance Standards , PDF , High

It lists clearance distances for indoor and outdoor electrical installations at



## technical guidance for developers domestic electricity

Please remember we are a heavily regulated industry, and the instructions in this document need to be followed in order for the installation of your network to go smoothly and safely.



### News

Safety First Power distribution cabinets and boxes should always be installed in environments that are dry and well-ventilated. Areas free from corrosive gases and flammable substances are ideal to

### GTC Technical Guidelines

Where access to the wall behind the meter box and hockey stick is possible, the Developer shall pre-install a steel sheet of at least 1mm thickness to the wall behind the meter box to a minimum height



### National Metering Installation Requirements

be capable of being opened to an angle of not less than 90 degrees from the closed position with all metering equipment installed and when opened, maintains a minimum distance of 200mm from the



## How to determine the size, installation method and

The distance between distribution box and switch box shall not exceed 30m. The horizontal distance between the switch box and the fixed electrical equipment



## ADDC Guidelines for Smart Meter Installation (Rev)

Install 25mm dia. PVC conduit (Heavy grade 1250N compression force) horizontally between the water meter room to electricity meter room in each floor and install vertically between the floor-to-floor from

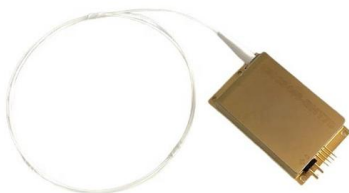
## Distribution boards components

Distribution boards (generally only one in residential premises) usually include the meter (s) and in some cases (notably where the supply utilities impose a TT earthing system and/or tariff



## Spacing Requirements for Power Distribution and Terminal Blocks

Power Distribution blocks are evaluated to UL1953, the Power Distribution Block standard and are listed for general installation, meaning they have adequate spacing for most OEM and field applications.





## Installation Standards and Safety Precautions for Distribution Boxes

Sub-distribution box should be installed in the electricity equipment or load is relatively concentrated in the area. Distribution box and switch box distance shall not exceed 30 m.

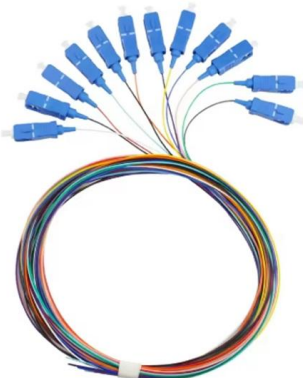


## Microsoft Word

Equipment on adjustment/monitoring/control panels The current federal standards must be strictly followed in terms of the colours and cross-sections of the conductors to be used.

## Instrument Installation: Cabling Guidelines

Learn more on general guidelines on instrument cable installation; where and how to install cables i.e. cable routing, and cable segregation.



## Annex I

For example, a compressor or a power supply with associated auxiliaries provided by the equipment supplier. Plant system equipment may have local panels for manual control or local monitoring, but



## Modern practice for LV/MV substation and power

Bus bar trunking can be installed either vertically in riser shafts or horizontally in tunnels to facilitate the transmission and distribution of power. They



### Product Photography



## EDS 07-1119 Substation Electrical Services

The distribution board should be installed within 3 metres of the cut-out at a suitable height and location to allow operation from ground level. The distribution board shall also be positioned to allow

## Contact Us

---

For datasheets, pricing, or custom high-speed optical interconnect solutions, please visit:  
<https://syropy.com.pl>