

Distribution box perpendicular to the ground





Distribution box perpendicular to the ground

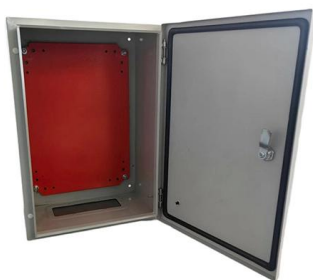


Clearances and Location Requirements for Enclosures, Pads, and

For example, a 3-foot setback is often adequate for parts of commercial parking lots where traffic flow is constrained and backing perpendicular to the curb is unlikely.

Understanding Distribution Boxes: Your Guide to Power

Weatherproof Distribution Boxes These serve specific outdoor purposes, with rain, dust, and extreme temperatures sealed shut, protecting any

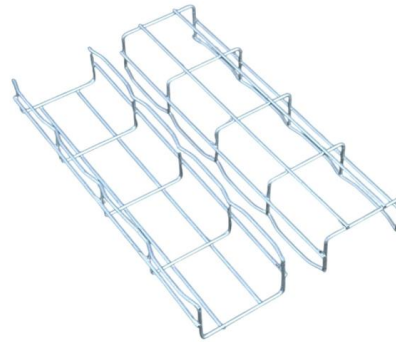


Outdoor Electrical Distribution Box Specifications: NEC

Complete specification guide for outdoor electrical distribution boxes covering NEC Article 312 requirements, NEMA ratings, sizing calculations, and

Underground Installation Guide

All MTE infrastructure including but not limited to conduits, manholes, box pads, and pull boxes must have a minimum horizontal separation of 36" from gas and water lines.

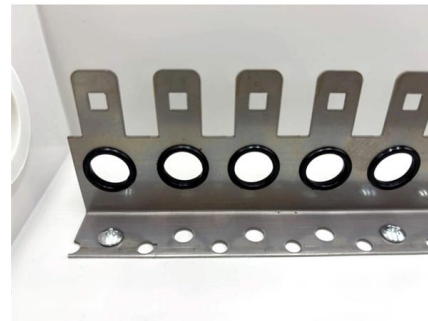


Size determination, installation method and wiring mode

The distribution box is the central hub of the home circuit and the general control of our daily power consumption. It is an indispensable electrical equipment. If there

Distribution Box Installation: A Complete Guide to Safe

The distribution box, often referred to as a breaker box, fuse box, or electrical panel, is a critical component of any electrical system. It acts as the central hub for



The Complete Guide to Distribution Box: Installation, Types & More

What's the difference between a distribution box and a sub-panel? A distribution box typically refers to the main electrical panel that receives power from the utility service. A sub-panel is



Underground Service Section of the DTE Energy Green Book

Install cable 18 inches inside property line (not in easements) parallel to the lot line to a point perpendicular to the meter location. DTE may eventually move distribution lines and service points to



How do you ground a plastic electrical box

However, with plastic distribution boxes, the grounding process can be somewhat complicated. Here are the steps on how to ground a power

Underground Installation Guide

SCOPE The project consists of the installation of the complete underground duct system for both primary and secondary voltages, including conduit, pull boxes, sectors ground sleeves, equipment



PTFIX distribution blocks , Phoenix Contact

Save space and time in your potential distribution with the Push-in distribution blocks, thus ensuring a cost-effective solution for load and control current distribution.



Embedded Installation Of Distribution Box

The box body shall be placed flat and vertical (the deviation shall be no more than 3mm), and there shall be no gap around. The edge of the panel shall be close to the wall, and shall not be

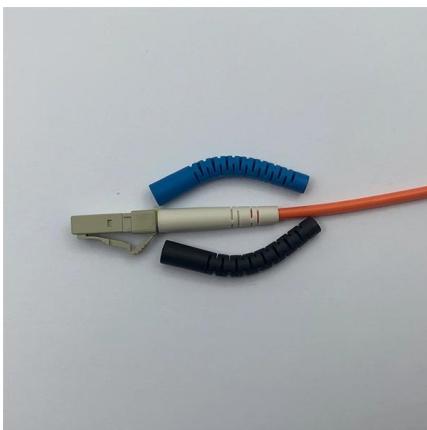


What is the Ideal Installation Height for a Distribution Box

General Guidelines for the Installation of Distribution Box Standard Height Recommendations Follow height rules when installing a distribution box. Wall

SAFEHOUSE GUIDE TO DISTRIBUTION BOARDS,

SAFEHOUSE GUIDE TO DISTRIBUTION BOARDS, ISOLATORS AND EARTH LEAKAGE UNITS The distribution board in any building contains



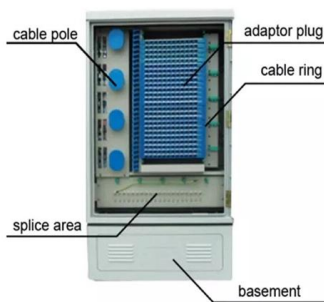
9 Recommended Practices for Grounding

Grounding and bonding are the basis upon which safety and power quality are built, and they provides low-impedance path for fault current.



The installation requirements for the distribution box

The distribution box shall be installed horizontally and vertically. After the box is placed, the perpendicularity of the box shall be found with ruler board to meet the requirements.

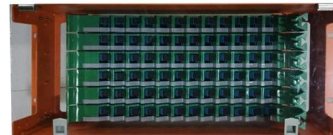


Understanding Circuit Breaker Wiring Configurations in

Correct wiring methods for circuit breakers within distribution boxes are fundamental to ensuring electrical safety and compliance with established codes.

Protective grounding requirements for transmission and distribution

This technical article covers protective grounding requirements for steel tower and wood pole supported transmission



Electrical Box Ground Wire Connectors & Connections

How to make proper & safe electrical ground wiring connections in the box: This article describes options for connecting a metal electrical box to the grounding conductor & connecting the grounding



Power Distribution Systems

Default Description AC Power Distribution System Components The distribution of electrical power is the final and most important step in the journey of electricity

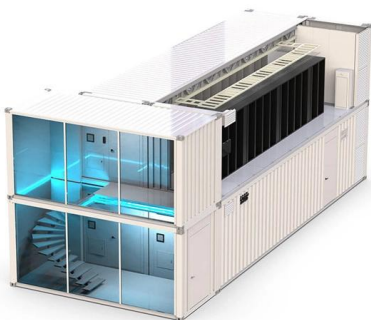
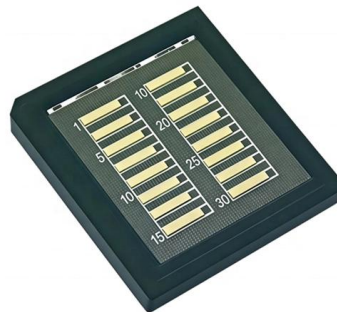


Distribution box with standard cable (for up to 4)

With this convenient distribution box with a standard pin cable you can connect up to 4 grounding products with a grounded wall socket or a grounded extension cord

Key Points Of Installation And Collocation Of Distribution Box In

The vertical distance between the bottom surface of the fixed distribution box and switch box and the ground shall be greater than 1.3m, less than 1.5m The vertical distance between the bottom of



Power Distribution Boxes Explained Simply

Discover the essentials of a Power Distribution Box--how it works, key types, benefits, and tips to ensure safe, efficient electrical power management.



Sub Panel Grounding Visual Guide

Learn how to properly ground a sub panel using a diagram. Understand the importance of grounding and ensure electrical safety.



How to Install a Cable Distribution Box Safely and

In modern electrical systems, cable distribution boxes (also known as electrical distribution boxes or distribution boxes) play a crucial role as the key

Distribution boards components

Distribution boards (generally only one in residential premises) usually include the meter (s) and in some cases (notably where the supply utilities impose a TT earthing system and/or tariff



Installing D-Boxes

Drop boxes are used to deliver effluent between trenches on sloping sites through sequential distribution. Basic definitions Distribution boxes are constructed with an inlet at the highest





How to determine the size, installation method and

(1) Wiring method of distribution box 1)

Generally, the incoming line of power distribution box adopts five wire system, that is, a, B and C three-way phase line



Contact Us

For datasheets, pricing, or custom high-speed optical interconnect solutions, please visit:
<https://syropy.com.pl>