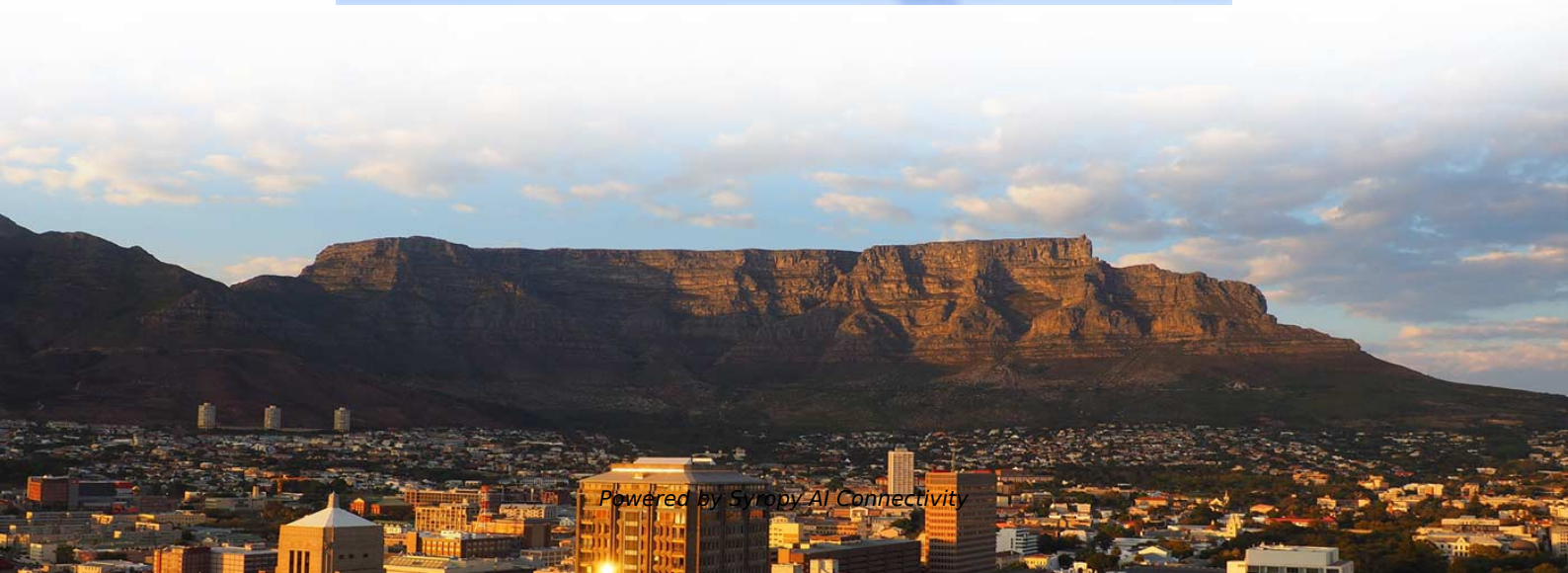


Does the distribution box need a vertical shaft





Does the distribution box need a vertical shaft



What Is an Electrical Distribution Box? A Complete Guide

An electrical distribution box routes power, prevents overloads, and keeps wiring organised--essential for safe, efficient home and

Understanding Distribution Boxes: Your Guide to Power

Weatherproof Distribution Boxes These serve specific outdoor purposes, with rain, dust, and extreme temperatures sealed shut, protecting any



In-Building Riser in Construction: A Comprehensive Guide

An in-building riser is a vertical pathway, typically a shaft or a set of ducts, that allows essential services and utilities to be distributed throughout the building.



Introduction to Water Distribution Systems Chapter 5

Primary Function and Design The basic function of a water distribution system is to transport the water from the treatment facility to the customer. In addition, distribution systems may also provide storage,



Choosing the right power distribution box solution for your needs

A tailored solution ensures that the power distribution box precisely meets your unique needs. In case you're wondering, we do indeed offer bespoke solutions here at Rubber Box - so if you need a



The Complete Guide to Septic Tank Distribution Boxes

The distribution box serves to evenly divide and distribute the effluent exiting the septic tank to the entire drain field. When wastewater enters the box



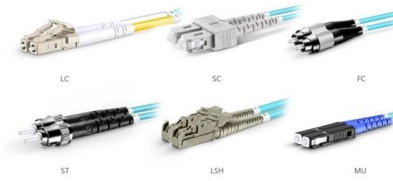
The Importance of Distribution Boxes in Electrical Systems

Learn more about how distribution boxes play a critical role in the safe and efficient operation of electrical systems.



Power Distribution Boxes Explained Simply

Discover the essentials of a Power Distribution Box--how it works, key types, benefits, and tips to ensure safe, efficient electrical power management.



OM3 Fiber Patch Cable Family

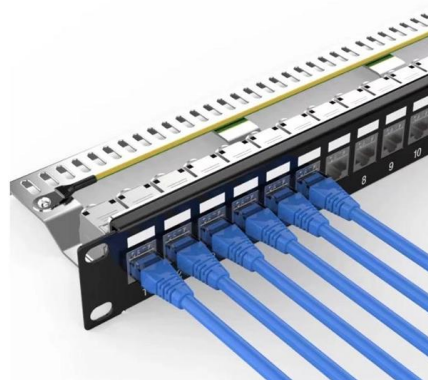


How to Choose a House Distribution Box , CHINT global

A well-chosen distribution box ensures the safety and efficiency of your household electrical system. This article guides you through selecting a

how does a power distribution box work

Share to: The distribution box is a very important component of the power system. It is responsible for transmitting electrical energy from the power



Vertical Riser Cable Support , Information by Electrical Professionals

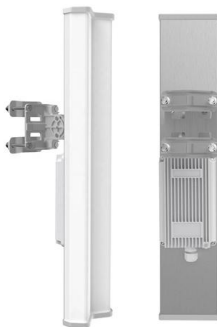
I was told that the only way to access this shaft was with a bosons chair rigged from the roof. I got a quote to rig the shaft and it was about \$10,000. The shaft had support boxes on the



Vertical distribution



8.8.1 Vertical distribution Shafts are used for vertical distribution of installations across individual units or fire compartments. Regarding the location of partitioning measures of penetrations, a distinction is



Installation points of household distribution box

5. If the distribution box of household distribution box needs to be perforated, the edge of the hole shall be smooth and smooth. When the distribution box is buried

What Is a Distribution Box?

What to Look for When Choosing a Distribution Box If you're going to buy a distribution box, there are several things you should look for. You should



Septic Tank Distribution: All You Need to Know about

1. What is a Distribution Box? A Distribution Box (D-Box) is a component of a septic system that collects wastewater from the septic tank and



The Complete Guide to Septic Tank Distribution Boxes ,

The distribution box serves to evenly divide and distribute the effluent exiting the septic tank to the entire drain field. When wastewater enters the box



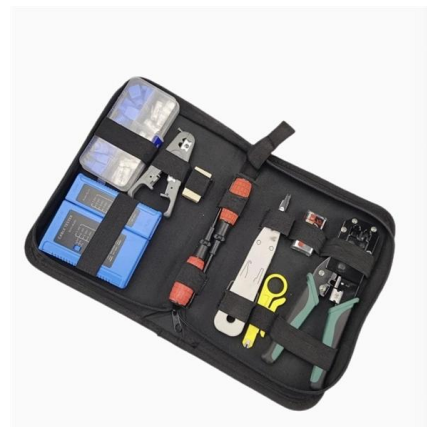
Distribution Boxes: Types and Functions

A distribution boxes acts as the load center and main distributor of electrical power within a building. Also called a distribution board, panel board,



Electrical Riser Diagram Explained , Brandon Electric

An electrical riser is a vertical electrical system that allows electricity to be distributed within a building. It is typically housed within a conduit, cable



Understanding Distribution Boxes:A Comprehensive Guide

Distribution boxes vary in size and shape based on the complexity of the electrical system and the building's power needs. They can be installed in

About the Internal Structure and Basic



Components of the Distribution

The electric distribution box is a low-voltage power distribution device that assembles switchgear, measuring instruments, protective appliances and auxiliary equipment in a closed or semi-closed



Brief Introduction To The Requirements Of Distribution Box

The distribution box device is the low-voltage terminal responsible for completing the system power control, protection, and distribution device conversion. The power

What Is A Distribution Board and How Does It Work? , TOSUNlux

Do you wonder how electric power is distributed in different parts of your home? Well, a distribution board or distribution box helps to do that! As the name goes, it is the load center and



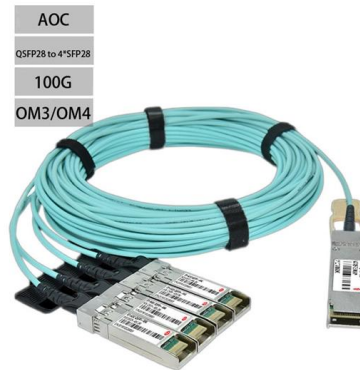
What Is a Distribution Box?

When choosing a distribution box, make sure the cord is long enough to reach the main power line. If it's too short, you may not be able to connect the



Understanding Gearbox Mounting Positions & Material

Gearboxes in material handling equipment - like conveyors, mixers, and hoists - can be mounted in various orientations. You might see gear units bolted horizontally



Size determination, installation method and wiring mode

The distribution box is the central hub of the home circuit and the general control of our daily power consumption. It is an indispensable electrical equipment. If there

What is the Internal Structure of The Distribution Box

Learn about the internal structure of a distribution box, its components, functions, and key types. Understand its role in electrical systems and safety.



What does a distribution box do?

The distribution box is mainly composed of the following five parts: 1. Main circuit breaker: responsible for controlling the power supply of the entire



Understanding Distribution Boxes:A Comprehensive Guide

Understanding its significance, this article covers what a distribution box is, how it functions, its structure, the various types available, and how it



How to Install a Cable Distribution Box Safely and

In modern electrical systems, cable distribution boxes (also known as electrical distribution boxes or distribution boxes) play a crucial role as the key

The purpose, working principle, and usage instructions

The purpose of the distribution box is to distribute electrical energy reasonably and facilitate circuit opening and closing operations. Has a high level



Contact Us

For datasheets, pricing, or custom high-speed optical interconnect solutions, please visit:
<https://syropy.com.pl>