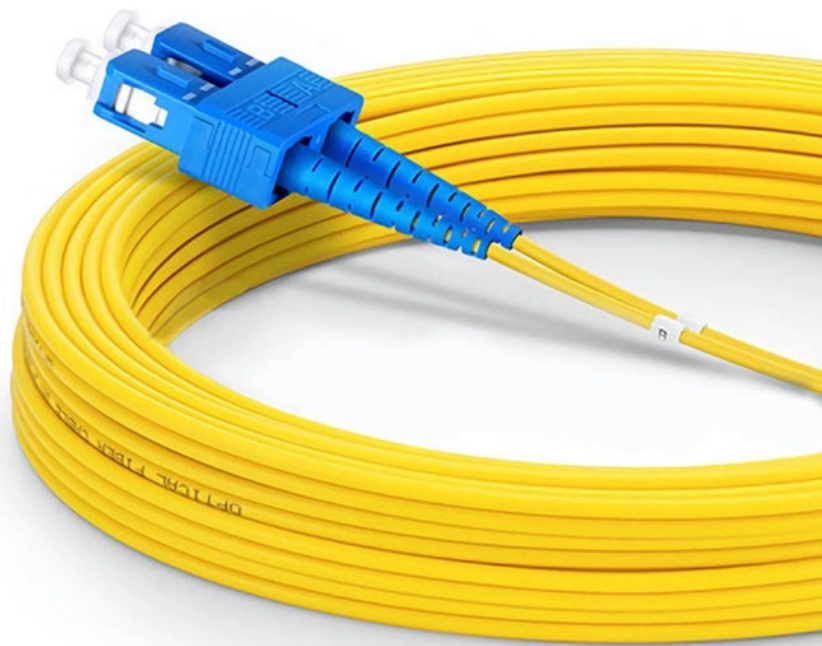


Dual-color adjustable touch module





Dual-color adjustable touch module

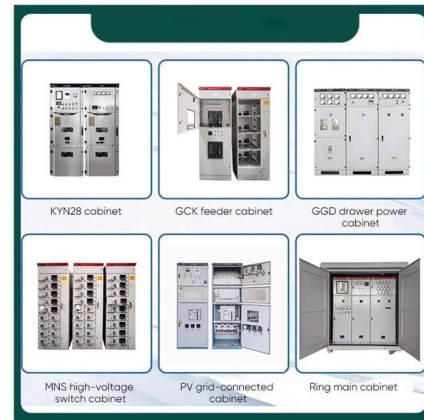


10PCS OE-TP Capacitive Touch Button Switch Module

Enhance your projects with OE-TP Capacitive Touch Button Switch Modules. Featuring a digital touch sensor, LED stepless dimming, and a powerful 10A

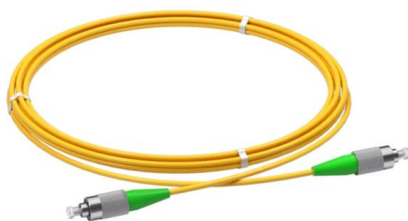
Hyte Y70 Touch Infinite Dual Chamber ATX Mid Tower

Product Description "Y70 touch infinite is an upgraded dual chamber ATX mid tower modern aesthetic case enabling meaningful digital interaction with an integrated



ESP32 Touchscreen 2.8inch TFT LCD Display ILI9341 Resistive

ESP32 Touchscreen can be used for APP remotecontrol, remote environmental data collection, remote data fusion, remote Parameter settings and other IoT development applications.



TTP229 16-Way Capacitive Touch Switch Digital keypad Module

Buy TTP229 16-Way Capacitive Touch Switch Digital keypad at Zbotic. Shop Electronic Switches/Keypads Modules online with free shipping



Trumsense WS08D1 Touch Switch Dual Color Brightness and Colour

WS08 series mirror touch switch is a product specially designed for bathroom intelligent lamp mirror. The product has reliable performance, convenient installation, sensitive touch and high output power,



Glass Touch Panel for adjusting Color (RGB) using RF.

Featuring an ultra-sensitive backlit touch display on high end durable glass, this attractive and modern controller allows one to control Up to 4 Zones of Color



lighting touch switch module , Capacitive Touch Switch Modules

In other words, Cochief provides a variety of capacitive touch module solutions, that can be combined directly with the customer's product design through color-variable panels, sound and light effects



Freestyle Edge RGB+ , Split Mechanical RGB Ergonomic Keyboard

Features The award-winning Freestyle Edge RGB+ keyboard offers the same advanced ergonomic features of the Freestyle2 but with the additional benefits of full on-board programmability and low



TTP223 Capacitive Touch Sensor Module - Red

Quick Overview: Single Channel Capacitive Touch Sensor Module (TTP223) Red color for easy identification Supports momentary or latching/toggle modes

Support Center

Support Center How can we help you? Welcome to the Blackmagic Design support center. Here you will find the latest software updates, support notes, instruction manuals and all kinds of helpful



190X95X25mm



DC 12V 24V Self-locking Dual Touch Switch Controller

Upgrade your washroom or bedroom mirror with the DC 12V 24V Self-locking Dual Touch Switch Controller. This glass sensing module, with a 30m delay, provides

ESP32-S3 7inch Display Development Board



Type B,

ESP32-S3 7inch Display Development Board Type B, ESP32 With Display, 1024x600, Optional For Touch Function, 32-bit LX7 Dual-core Processor, Up to



ESP32-S3 2inch Capacitive Touch Display Development

Onboard 2inch capacitive touch display for clear color picture display, 240 × 320 resolution, 262K color Built-in ST7789T3 display driver and CST816D capacitive



Geekstory 2.8 inch ESP32 Display Module ESP32-2432S028R

Info zu diesem Artikel Drive Chip: ILI9341 ESP32 WIFI & BT Development Board; 2,8 Zoll resistiver Touchscreen Der Bildschirm kann für App-Fernbedienung, Ferndatensammlung und Fernbedienung



MD0013

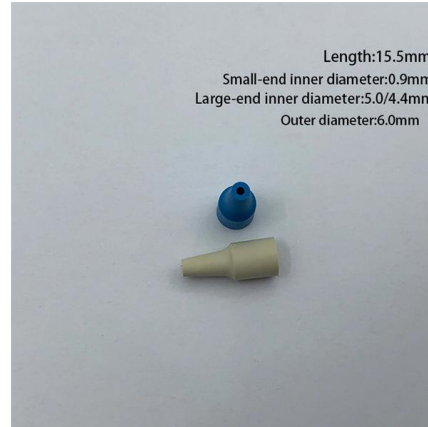
This is TTP229 16-Way Capacitive Touch Switch Digital Touch Sensor Keypad Module. This capacitive touch sensor module uses the TTP229 integrated circuit,





Antumbra Touch iColor Keypad

Antumbra iColor Keypad is a compact stand-alone lighting controller for intelligent RGB and intelligent white-light LED luminaires from Color Kinetics.



Touch Modules

Touch Module Qualification Testing Production & Logistic Dedicated Touch Modules for smart and innovative HMI interfaces We offer 4 generations of CoolTouch®

Our touch portfolio , DATA MODUL

In our portfolio you will find a wide range of touch components with different sensor technologies, tails and controller boards and thus offer touch solutions tailored to



Results for capacitive touch switch module

Looking for a good deal on capacitive touch switch module? Explore a wide range of the best capacitive touch switch module on AliExpress to find one that suits you! Besides good quality brands, you'll also



Amazon : Touch Sensitive Switches

Amazon : touch sensitive switches JOYLIT LED Dimmer Switch with Remote, DC 5V-36V 8A Magnetic Wall-Mounted RF Wireless Control, Sensitive Touch Slide Controller No Flicker Dimming



7? Display Modules

7" Display Modules These modules make integration easy. Each unit comes with an LCD, controller board, backlight driver, and touch screen, integrated and ready to

Gorillacell Module 018: Color Touch Sensor

The Color Touch Sensor functions similarly to a regular touch sensor but retains its previous state, toggling its logic state each time it is touched. It also features a



RF Double Touch Slider Dual Color LED Controller SR

SR-2834CCT is a full touch dual color LED controller designed with double touch sliders which offer fast and accurate color temperature adjustment for warm white



Amazon : Touch Dimmer Module

Amazon : touch dimmer module Check each product page for other buying options. Price and other details may vary based on product size and color.



Variable Color Temperature Dual White CCT LED Strip Lights

Dual White CCT Dimmable LED Strips Dual White CCT dimmable LED strips are designed to produce two distinct shades of white light--typically warm white and cool white--while allowing smooth

FancyWhoop 2.8" inch ESP32 Display ESP32

FancyWhoop 2.8" inch ESP32 Display ESP32-2432S028R ILI9341 Resistive Touch Screen, ESP-WROOM-32 240x320 TFT LCD Module WiFi Bluetooth Dual Core



mySTM32 Mikrocontroller-Shop

Datenblatt LCD-Modul 240374PQ Datenblatt Touch Screen Controller ILI9341 Datenblatt Display-Controller SSD1289 Color Grafic Touch LCD Version 2 mit ILI9341 Display-Controller Dieses Color



Capacitive Touch Sensors Switches Module



Adjustable Sensitivity

Features: Introducing the TTP223 Capacitive Touch Sensors Module with selflocking/momentary mode, delivering reliable touch control and low power consumption (DC2.5V-5.5V) for seamlessly



Amazon : 12v Touch Switch

HAMRVL Led Dimmer Switch DC 12V Touch Switch On/Off Dimmer Stepless Dimming Switches as 5-24V Single Color LED Lights Strip Brightness Controller Suitable For 17mm/0.67in Mounting Hole

Contact Us

For datasheets, pricing, or custom high-speed optical interconnect solutions, please visit:
<https://syropy.com.pl>