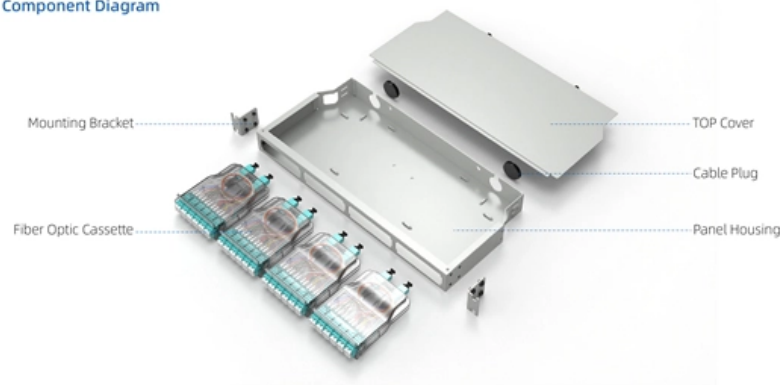
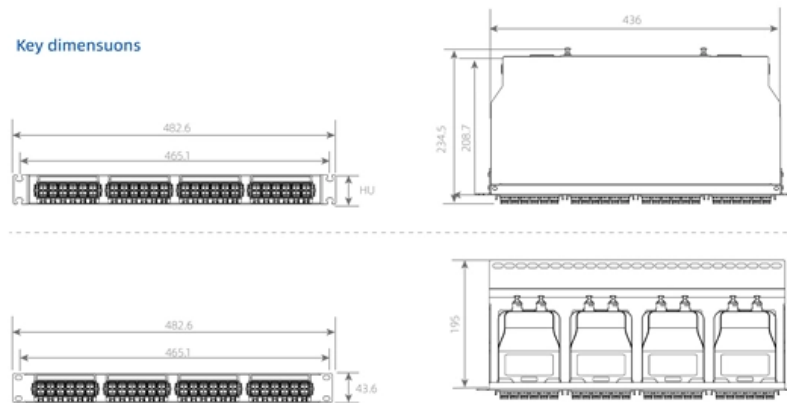


Explosion-proof distribution box genuine explosion-proof type

Component Diagram



Key dimensions





Explosion-proof distribution box genuine explosion-proof type

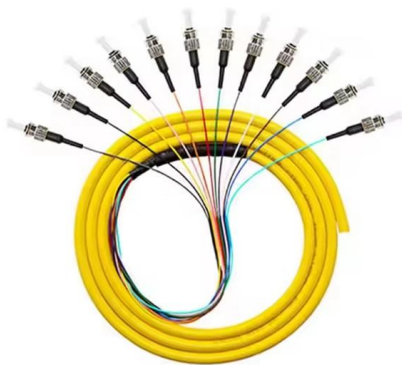


Ex-Proof & Flameproof Enclosures & Junction Box , Supermec

All explosion-proof enclosures, lighting or power distribution boxes are manufactured using the latest technologies, both mechanical and electrical, using materials able to resist in most highly corrosive

Ex Distribution Boards & Enclosures , mlx-ex

Ex distribution boards - Explosion-proof distribution boards designed for Ex and ATEX areas. Customizable, safe, and certified electrical solutions.



Explosion-Proof Distribution Box

The distribution box (explosion-proof) is an aluminum alloy housing, electrostatic spraying, in accordance with the explosion-proof provisions of GB3836.2-2000, for the distribution of electric

Explosion Proof Distribution Box & Electrical Enclosures

Durable Hexlon Explosion Proof Distribution Boxes and Electrical Enclosures, IECEx and ATEX certified for Zone 1 and Zone 2.



Stainless Steel Explosion-Proof Corrosion-Resistant Distribution Box

BX51 Stainless Steel Explosion-Proof Distribution Box is engineered to control power distribution safely in explosive-prone areas.



Explosion Proof Illumination Distribution Boxes (With

Flameproof and explosion proof, these power overhaul distribution boxes are suitable for use in hazardous areas. Specs: Ex mark: Ex de IIC T4 Gb DIP A21 TA,T4



PXK (Ex pz IIC) Series Explosion-proof Pressurized Distribution Cabinets

Pressurized Products PXK Series Explosion-proof Pressurized Distribution Cabinets ..K15 Explosion protection to -CENELEC -IEC Can be used in Zone 1 and Zone 2 Zone 21 and Zone 22 Explosion

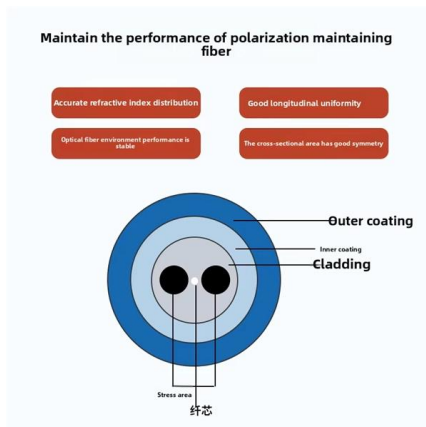


Terminal and Junction Boxes (Ex d) ,



Explosion Protection

The modular design allows for tailored configurations that align with specific technical and environmental needs. High degree of protection ratings (IP) and wide operating temperature ranges ensure



Model and Specification of Explosion-Proof Distribution Box

Explosion-proof lighting distribution boxes and cabinets come in a variety of models. They vary in terms of materials, including metal and flame-retardant plastic; installation methods, such as

Distribution Boxes

Distribution Boxes Home / Hazardous Area / Hazardous Area Distribution Boxes & Enclosures / Distribution Boxes Distribution Boxes BXM (D)51 Series Explosion

Pre-Terminated Patch Panel

- Standard 19" width
- Max 144 fibers in 1U
- MPO/Fusion Dual-Purpose



Removable Cable Management Tray



Transparent Front Cover



High-Quality Matte Coated Steel



CE92 Explosion-proof power distribution boxes

Need help choosing the right product? Contact our experts or request a quote today. Main switch: Maximum current is 180A. Branch circuit: Maximum current is 100A.



Explosion Proof Distribution Box , ATEX Transformer Supplier

We supply certified explosion proof distribution box & ATEX Transformer -Appleton, ATKON, CZ, CEAG, brands for safe and reliable industrial use.



Distribution Boxes

Distribution Boxes BXM (D)51 Series Explosion proof Distribution Boxes Lighting/Power (Ex d e IIB) Distribution Boxes BXM (D)53 Explosion proof

Explosion proof distribution box standards and installation issues

Explosion-proof distribution boxes are mainly used in coal mines, fire stations, petroleum, petrochemical installations and textile and other flammable and explosive places. These places are more prone to



Distribution Boxes HRMD96 Series Explosion-proof Distribution Panels

·Equipped with specialized hinge structure, which can prevent the flameproof joints from damage when opening and closing the box, and greatly prolong the service life of box. The boxes can be combined



Explosion-Proof Electrical Distribution



Boxes: Applications in

Types of Explosion-Proof Boxes Various types of explosion-proof boxes are engineered to meet specific operational requirements in hazardous environments. These include junction boxes, control panels,



Explosion Proof Distribution Boxes

Explosion proof distribution box components for use in hazardous areas - Zone 1 and 2; Zone 21 and 22.



Custom CZ1290 Explosion-proof distribution boxes

About CZ CZ Electric Co., Ltd was established in 1990, is a CZ1290 Explosion-proof distribution boxes (socket with transformer) suppliers, and is headquartered in



CE92 Explosion-proof power distribution boxes

Product Details: Ex mark:Ex de IIC T4 Gb DIP A21 TA,T4 Intended use:zone 1,zone 2,zone21,zone22 Degree of protection:IP66 Structure:Combined modulars





DISTRIBUTION BOARDS

Extol International are the leading suppliers of Control Panels & Distribution Boards for hazardous areas and explosive atmospheres - a comprehensive range of Explosion Proof control panels are available



Explosion Proof Power Distribution Boxes CE92

Flameproof and explosion proof, these power overhaul distribution boxes are suitable for use in hazardous areas. Main switch: Maximum current is 180A. Branch

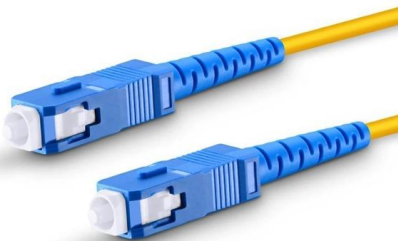
DISTRIBUTION BOARDS

These are available in a range of materials including Stainless Steel, GRP & Sheet Steel from IP42 (Indoor) to IP 66 (Outdoor) Applications.



Distribution box solutions for explosion-proof environments in

Explosion-proof distribution boxes represent where regulatory wisdom meets engineering excellence. What appears as simple protective enclosures are actually sophisticated safety systems honed





5 Key Factors to Consider When Selecting Explosion Proof Distribution Boxes

When choosing explosion-proof distribution boxes, decision-makers should focus on these five key factors: Certification & Compliance: Ensures the product meets global safety



BM (D)X-Series Explosion Protected Distribution Box

BM (D)X-Series Explosion Protected Distribution Box Explosion protection -IECEX (IEC) -ATEX (CENELEC,EN) -China Ex (GB) Application in hazardous area

Contact Us

For datasheets, pricing, or custom high-speed optical interconnect solutions, please visit:
<https://syropy.com.pl>