

Explosion-proof wall- penetrating pipe for high- voltage switchgear busbar





Explosion-proof wall-penetrating pipe for high-voltage switchgear b



Venting of exhaust gases from arc-resistant equipment

Venting of exhaust gases from arc-resistant equipment When an arcing event occurs inside switchgear, the arc produces extremely high temperatures, of the order of 20,000 K at the arc terminals. This

3.3kV/6.6kV Explosion-Proof Switchgear

The 3.3kV/6.6kV explosion-proof switchgear is engineered for high-voltage power distribution in hazardous areas, ensuring operational safety under extreme conditions.



Installation guidelines for MV metal-enclosed switchgear

Metal-enclosed switchgear What does it mean 'metal-enclosed switchgear'? Metal-enclosed switchgear and controlgear are generally assembled

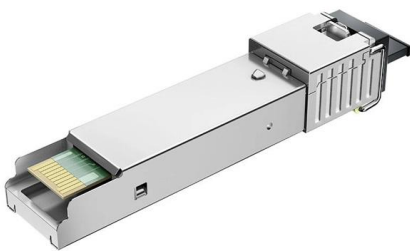
Metal Clad Switchgear>Switchboards>Electric Products

Metal Clad Switchgear BMT's Metal Clad Switchgear (MCSG) has the highest level of safety and reliability features. The segregation between compartments (Circuit



Medium voltage products UniGear ZS1

Interlock-controlled accessible compartment The front of UniGear ZS1 is classified interlock-controlled because the access of the compartments containing high-voltage parts, intended to be opened for



P-BA-0000211_mIHVZ_V11

To get the required certificate, the personnel must have taken part successfully in a training for assembly and installation of Siemens gas-insulated medium-voltage switchgear type



Manufacturer of GRP/FRP Pipe & Chemical Equipment by EPP

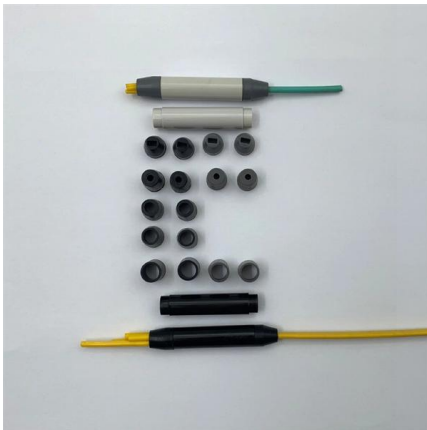
Hazardous Areas: Explosion-proof or dust-tight housings for volatile industrial settings (often metal, but insulated variants exist). Outdoor Substations: Fully sealed switchgear for outdoor power distribution.





Cable penetrations seals , Wolman

KBS ® Sealbags are mainly used for the flexible sealing of cable penetrations in walls and floors when cables have to be replaced or retrofitted frequently. KBS ® Sealbags are tested according to DIN



Explosion protective components & systems , Products , ABB

From its global facilities ABB manufactures a wide range of ATEX, IECEx, UL, CSA approved electrical products for hazardous area applications. These include cable glands and lighting ranges.

High Voltage Hermetic Cable and Wire Feedthrough Seals

Hermetic high-voltage feedthroughs for vacuum and high-pressure environments. Custom engineered with PAVE-Seal®. Request technical specs.



Explosion proof conduit systems

ABB's Smart Switchgear solutions are designed to improve energy efficiency, reliability, safety, and ease of operation in various applications such as commercial buildings, infrastructure, and industrial facilities.

The switchgear is provided with a continuous electrolytic copper earthing busbar, with a cross-section suitable for the switchgear short-circuit rating and pre-set on both sides for the connection to the



Manufacturer of GRP/FRP Pipe & Chemical Equipment by EPP

Medium/Low Voltage Panels: Control and distribution panels in factories, substations, and buildings. Hazardous Areas: Explosion-proof or dust-tight housings for volatile industrial settings (often metal,

Applications for Roxtec cable and pipe seals in data centers

Interior walls between server rooms and network rooms need to be protected against the spreading of fire with approved firestop devices. The modular-based design of Roxtec transits allows for high



Electrical Design Handbook

Abstract This manual is provided for the use of all Departments of the ITER Organization and is addressed to system specifiers, designers and users of electrical components in otherwise non



Cable and pipe seals

Our round transits are developed for use in a wide range of demanding environments, and are ideal for area efficient sealing of wall or floor penetrations.



Explosionproof switchgear assemblies , thuba Ltd.

The instrumentation, control and monitoring of explosionproof equipment in hazardous areas require switchgear assemblies complying with the regulations. This unit comprises either an operator panel



Electrical Penetrations

We offer a complete range of internationally tested and approved firestopping products for evolving electrical penetrations such as telecom, Datacom and various other low voltage cables.



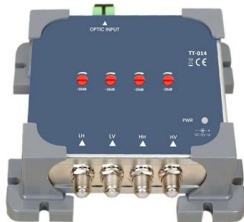
TIP technical series , Edition 7.1 , Arcing faults in medium-voltage

Like in medium-voltage switchgear or low-voltage switch-boards, there also is the hazard of an arc fault in the trans-former room. Compared to switchgear rooms, the pressure increase can be much higher



Busbar Design Standards for MV Switchgear

Busbar design within Medium Voltage (MV) switchgear is a critical aspect, fundamentally ensuring the safe, reliable, and



Explosion Proof Switchgear & Controls

We carry a large variety of explosion-proof switch models including tumbler amp switches, push buttons, rotary dimmers, three-phase switches, factory-sealed switches and circuit breakers.

GENERAL SPECIFICATION FOR THE CIVIL ENGINEERING SUB

Internal load bearing masonry walls enclosing rooms that house High Voltage Equipment shall be light coloured solid smooth fair-faced clay or concrete facing brickwork of minimum 20N/mm²



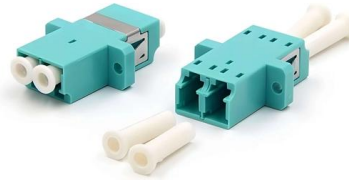
Applications for Roxtec cable and pipe seals in data centers

Roxtec solutions are used around plastic pipes, metal pipes and conduits of various sizes entering buildings both above and below ground. Our seals prevent water, fire, pests, hazardous gases and



Code of Practice for the Electricity (Wiring) Regulations (2020 Edition)

26A Domestic Installation and Appliance 26B Busbar Trunking Distribution System 26C Electric Motor 26D Supply Connection to Transformers 26E Supply Connection to Welding Sets 26F Installation of

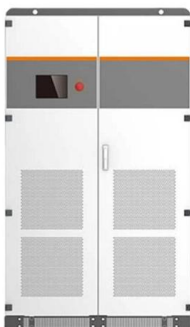


IEC COPPER EDITION

E& I Engineering provide high voltage and low voltage switchgear and ABB provides a range of busbar trunking for power distribution. Together we can provide complete power solutions for you project.

Wall Bushings (12kV-40.5kV Epoxy) , Switchgear

XBRELE Wall Bushings (technically defined as Through-Wall Insulators) serve as the vital link in medium voltage distribution systems. They are designed to carry high



Gas-insulated medium voltage switchgear

Voltage transformers for integrated busbar measurement (transformers of metering 3 and 4 in figure 2.3.7.1) are supplied loose and have to be installed at site after high voltage testing.



CABLE ENTRY SEALS

Roxtec cable and pipe entry seals provide protection against a wide range of hazards. Typical examples are gas, smoke, dust, fire, vibration and electromagnetic interference.

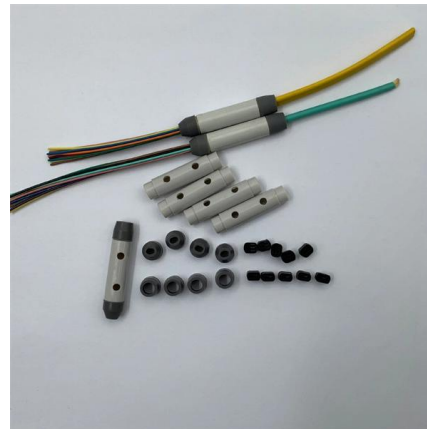


Design and Building A High Voltage Switchgear Safety System

The system was successfully tested on a high voltage switchgear. Index Terms-- accidents, arc-quenching, electro-pneumatic, high-voltage, remotely control, switchgear safety switching, substations

Cable and pipe seals for power transmission and distribution

Roxtec UGTM transits for underground use single or multiple cables and pipes entering via foundations. The seals form a long-asting barrier against flooding, humidity, gas, and rodents. They provide



TECHNOLOGICAL ASPECTS OF THE USE OF CAST POLYMER INSULATION FOR HIGH

Special high-voltage busbar (current carrier) designs are widely used to connect various objects in stations and substations (generators, transformers, switchgear, etc.) and individual components of



Contact Us

For datasheets, pricing, or custom high-speed optical interconnect solutions, please visit:

<https://syropy.com.pl>