

Fiber Optic Cable Survey Instrument Adjustment Method





Fiber Optic Cable Survey Instrument Adjustment Method

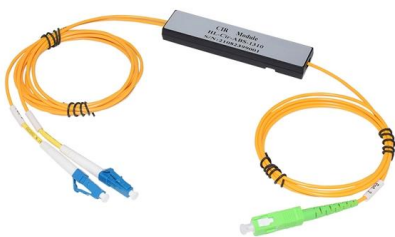


Appendix 5-A: Methodology Statement for Submarine Cable Installation

The CHPE route has been carefully designed to minimize its impact on the environment. Burying the cables keeps it out of sight and protects it from extreme weather. Within the US, the cable route will

SM Optic Fiber Tester Survey Instrument Longest

TK200 optical cable survey instrument completely replace the previous cutting, bending, freezing and other optical cable identification method, is a new non



Instrument Adjustments

8-1. INTRODUCTION Surveying instruments are very durable, but delicate and precise pieces of equipment. No matter how well an instrument has been adjusted, rough handling, temperature varia

Planning, Survey and Design

10. Documentation: o Maintain comprehensive documentation throughout the planning, survey, and design process, including site survey reports (Topo and



Guidelines Corning Recommended Fiber Optic Test

important. The OTDR trace can be used for cable acceptance, splice and connector loss, documentation, troubleshooting, fault location, optical return loss, and to measure the length of PM

Planning and route survey , PDF

This document discusses planning and surveying for fiber optic network routes. It outlines the importance of performing a preliminary survey to identify the optimal



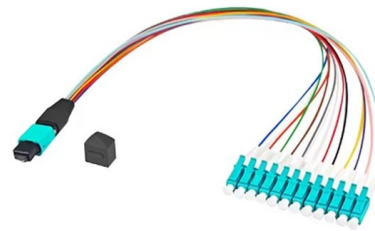
Fibre Optic Methods of Prospecting: A Comprehensive

Over the past decades, the development of fibre optic cables, which pass light waves carrying data guided by total internal reflection, has led to



Fiber Optic Cable Testing Methods ,Fluke Networks

Fiber optic testing ensures the performance and reliability of fiber optic networks. These test procedures assess the physical and functional qualities of fiber optic cables, connectors, and the network as a



The FOA Reference For Fiber Optics

The method originally called for in TIA-568 is the one cable method, but that method doesn't work with every type of connector and test equipment interfaces, so the standards now allow any method as

Fiber testers : Equipment and tools , Fluke Networks

Technicians use various tools to install, maintain, and troubleshoot fiber cabling: detection and verification testers, certification testers, inspection cameras,



Instal 04 Buried Cable Installation Practices Iss3

1.0 GENERAL 1.01 This procedure provides general information for the installation of Prysmian fiber optic cables in direct buried applications. The methods described are intended for guideline use only,



Fiber Optic Cable Testing 101: Tools, Techniques, and

Fiber Optic Cable Testing Ensures network reliability by using tools like visible light sources, power meters, and OTDRs to measure signal loss,

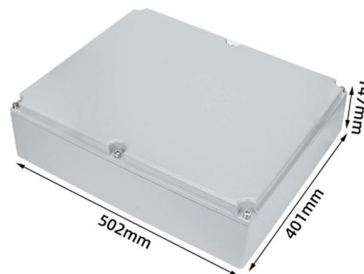


Equipment Calibration Guide , Learn Surveying

Proper calibration of surveying equipment is essential for ensuring accurate measurements and reliable survey results. This guide covers everything

The FOA Reference For Fiber Optics

Testing fiber optic components and cable plants requires making several measurements with the most common measurement parameters listed in the



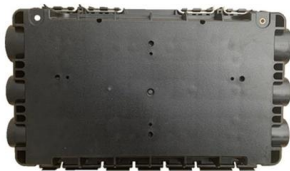
23 Optical Cable Pre-Construction Survey

Pre-construction site survey is one of the most important steps in the engineering and placement of a new optical cable. During this survey the placing supervisor will be able to observe any unusual



The FOA Reference For Fiber Optics

Topic: Fiber Optic Table of Contents: The FOA Reference Guide To Fiber Optics Installation Checklist Planning for the installation is a critical phase of any project as it involves coordinating activities of

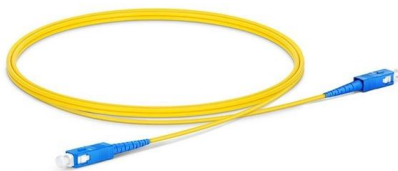


OSP Civil Works Guide-FOA

OSP Fiber Optics Civil Works Guide An updated version of this booklet is now available as a textbook on Amazon, is included in the FOA Reference Guide to Outside Plant Fiber Optics and as a section

Fiber Optic Instrumentation System

When the fiber attenuation varies with distance, then the OTDR is the only instrument which can measure the fiber attenuation along the fiber optics link.



Fiber Optic Cable Testing 101: Tools, Techniques, and

In this article, we explore why fiber optic cable testing is essential, delve into three key testing methods, and explain how to determine the best

Route Design/Cable Laying Technologies for Optical Submarine Cables



2. Marine Route Survey In order to construct a fault free submarine cable system it is important to carry out a marine route survey to understand the conditions of the seabed where the cable is to be laid



HOW TO CARRY OUT ROUTE SURVEY FOR FIBER

The document outlines the process and importance of conducting a route survey for fiber project implementation, emphasizing that it is crucial for project accuracy

The FOA Reference For Fiber Optics

Designers of fiber optic cable plants and networks depend on these specifications to determine if networks will work for the planned applications. For the purposes of



Analysis and Research on Optical Cable Route Survey Method

Combining with actual case situations, it analyzes the actual survey effects of different schemes in a targeted manner. The article innovatively proposes the research concept of a new fiber



Fiber testers : Equipment and tools , Fluke Networks

One button measures fiber length and optical loss on two fibers at two wavelengths, computes the optical loss budget, compares the results to the selected industry



Underground Installation of Optic Fiber Cable Placing

Placing cables underground has the added benefits of reducing transmission losses, aiding planning consent and reduced risk of service supply loss through extreme weather. This practice covers the

FIBER TESTING BEST PRACTICES

Introduction With the introduction of low loss fiber optic components such as connectors and LC/MPO cassettes, loss budgets (test limits) are becoming increasingly smaller. As a result, installers are



Reference Guide to Fiber Optic Testing

Prior to installation, fiber inspections are performed to ensure that the fiber cables received from the manufacturer conform to the required specifications (length, attenuation, etc.) and have not been



Distributed Fiber Optic Monitoring of Ground Settlement

The fiber optic cable was installed using a direct-push technique using a Cone Penetration Test (CPT) rig, rather than installation in a conventional



Fiber Testing , Fiber Optic Cable Testing Methods & Top

Learn essential testing methods, get help from fiber experts, and demo the industry's most complete range of fiber testers, including VFL fiber testers.

Contact Us

For datasheets, pricing, or custom high-speed optical interconnect solutions, please visit:
<https://syropy.com.pl>