

Fiber Optic Through-beam Sensor Photoelectric Through- beam





Fiber Optic Through-beam Sensor Photoelectric Through-beam



Through-Beam

Through-beam photoelectric sensors have an emitter and a receiver housed separately. The emitter sends a beam of light to the receiver, which detects a

Through-Beam

Through-beam photoelectric sensors consist of an emitter and a receiver in separate housings. The emitter sends a beam of light to the receiver, which determines a



What Are Through-Beam Photoelectric Sensors?

Learn what through-beam photoelectric sensors are and how they work. Discover their key advantages, common uses, and benefits in industrial automation.

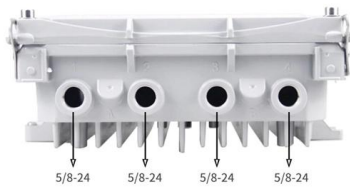
Photoelectric Sensors Breakdown: What They Are, Their Types,

Comprehensive article on photoelectric sensors covering their working principle, types (through-beam, retro-reflective, diffuse), key components and materials, and notable highlights and advantages in



Overview of Photoelectric Sensors , OMRON Industrial

Photoelectric Sensors detect photo-optical workpieces. OMRON provides many varieties of Sensor, including diffuse-reflective, through-beam, retro-reflective,



Optical Fiber Sensor Focusing Mirror M3 M4 M6 Diffuse

Product Summary: KNIUWMBMH Optical Fiber Sensor Focusing Mirror M3 M4 M6 Diffuse Reflection Through-Beam photoelectric Switch (F-4) From KNIUWMBMH



Photoelectric sensors

Fiber-optic waveguides These extend the range of possible applications of photoelectric fiber sensors with important additional fields of application. The upstream fiber optic waveguides define whether





All information about the E20752 at a glance. We assist you with your requirements. Technical data Mounting and Installation Instructions CAD drawings Compatible



Thru-Beam/Opposed Mode Sensors , TRI-TRONICS

AC/DC Sensor with Timer, Relay, or Triac Output
Self-contained, easy-to-use sensors available in a wide variety of sensing models (thru-beam, retroreflective,

Eaton

Eaton's Cutler-Hammer E58 Series Harsh Duty sensors are designed to withstand your harshest physical, chemical and optical environments. Extensive research



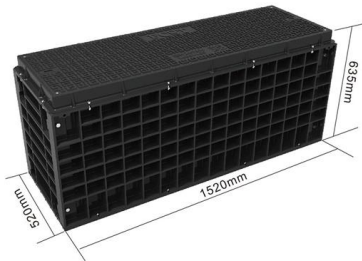
What Is a Photoelectric Sensor? , Types & Working

Explore how photoelectric sensors detect objects using light. Learn about the different types--through-beam, retroreflective, and diffuse--and how they work in



M3 M4M6 Optical Fiber Through-Beam Sensor Diffuse Reflection line

About this item Photoelectric Sensors M3M4M6 fiber optic monitor through-beam fiber optic sensor diffuse reflection fiber optic line PRS-310 fiber amplifier 24v See more product details



Understanding Fiber Optic's Role in Photoelectric Sensing

Photoelectric sensors and fiber optic sensors are very similar in a lot of ways, but which one is superior in function and durability, and under what

Photoelectric Sensors , Fiber-Optic Sensors , Fiber-Optic Cables , NF

Thread type Fiber-Optic Cables (through-beam type) *Download the drawing to check the tolerances. Click the image to enlarge.

Motor protection controller



Photoelectric Through Beam with Fiber-Optics

Photoelectric sensors are often used with fiber-optic cables in the through-beam/opposed mode.



Through-Beam Fiber Optic Sensors

When it comes to Through-Beam Fiber Optic Sensors, you can count on Grainger. Supplies and solutions for every industry, plus easy ordering, fast delivery and 24/7 customer support.



Through-beam sensors

Through-beam sensors Photoelectric sensors Available in: 16 Series Through-beam sensors from Balluff serve to detect objects reliably, regardless of surface, color,

Through Beam Fiber Optic Sensors - Mouser

Mouser offers inventory, pricing, & datasheets for Through Beam Fiber Optic Sensors.



Thru-Beam/Opposed Mode Sensors , TRI-TRONICS

High-resolution photoelectric sensor capable of performing sensing tasks most other sensors can't accomplish. It provides extended operating ranges, enhanced



Photoelectric Sensor Types: Choose the Right Range

Learn how to select the best photoelectric sensor types--diffuse, retroreflective, or through-beam--for your application. Discover tips on range,



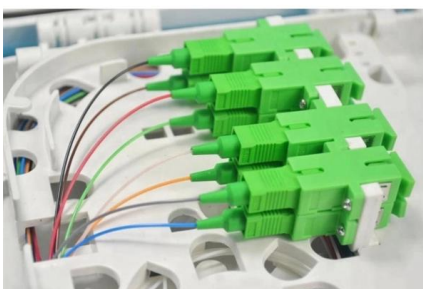
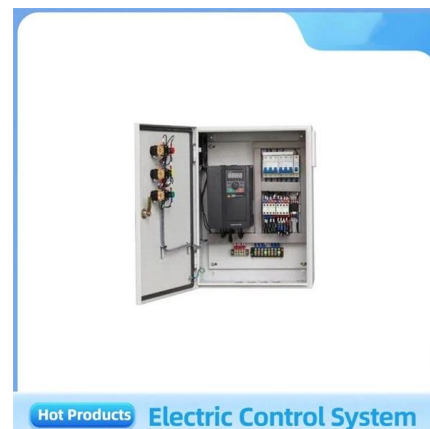
Photoelectric Sensors , Fiber-Optic Sensors , Fiber-Optic Cables

Thread type Fiber-Optic Cables (through-beam type) *Download the drawing to check the tolerances. Click the image to enlarge.



Photoelectric Through Beam with Fiber-Optics

Challenge: Photoelectric sensors are often used with fiber-optic cables in the through-beam/opposed mode. While there are numerous advantages/trade-offs associated with the through-beam mode, the



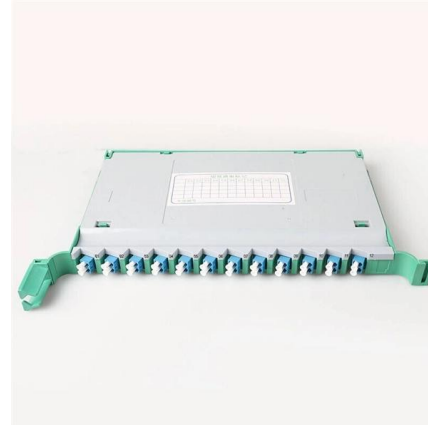
Through-beam sensors

Through-beam sensors from Balluff serve to detect objects reliably, regardless of surface, color, material - even with a heavy gloss finish. They consist of separate



Photoelectric Sensors

Fiber optic sensors and cables are the perfect solution for applications where the direct mounting of sensors is not possible due to space restrictions, temperature extremes, and so on. Small fiber optic



Thru-Beam Sensors

Through-beam sensing is the most efficient sensing mode which results in the longest sensing ranges and highest excess gain. This high gain enables through-beam sensors to be reliably used in foggy,



Throughbeam photoelectric sensors , Leuze

To solve this problem, we offer our customers a throughbeam photoelectric sensor which is by far the most powerful on the market and which can transilluminate



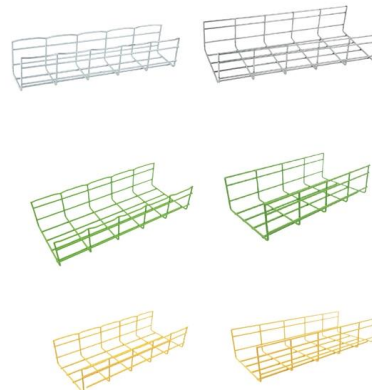
M3 M4 M6 Through-Beam Fiber Optic Sensor with protruding pin line

About this item Photoelectric Sensors M3 M4 M6 through-beam fiber optic sensor with protruding pin fiber optic line probe FT-310 FT-410 fiber amplifier See more product details Report an



Fiber Optic Sensor PR-610 Through-Beam Diffuse Reflection

About this item Capacitive Proximity Sensors
Fiber Optic Sensor PR-610 Through-beam Diffuse
Reflection Fiber Amplifier Accessories
Photoelectric Sensor Fiber Probe See more
product



Contact Us

For datasheets, pricing, or custom high-speed optical interconnect solutions,
please visit:
<https://syropy.com.pl>