

Fiber optic cables converge at the equipment room incoming line





Fiber optic cables converge at the equipment room incoming line

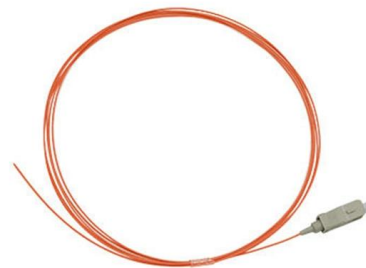


Indoor Fiber Optic Bonding & Grounding

Although telecommunications cabling generally does not communicate electrical power, it is necessary to protect systems and equipment from voltage and current transients.

Master Your Fibre Optic Installation: Step-by-Step Best Practices

This comprehensive guide delves into the intricacies of fiber optic installation, exploring topics ranging from cable types and pre-installation considerations to execution, safety protocols,



Maintaining fiber-optic cable at the demarc

Which type you use depends on your internal architecture. If there is a main crossconnect (MC) relatively close to the demarc, you might prefer splicing

The FOA Reference For Fiber Optics

The Server racks and switch racks are connected by UTP for up to 10G or fiber for any speed. The switch racks connect to Interconnection and SAN switches



Network Diagram for Fiber Optics

A fiber optics network diagram illustrates how high-speed data travels from an internet service provider to end users. These diagrams help engineers plan



All you need to know about installing fiber to buildings

In practice, a fiber network has no limitations in transmission distance, and therefore, no connection rooms, switches and panels are needed on every floor or every building.



101 Guidelines for Fiber Termination Box

Fiber termination box (FTB), also known as optical terminal box (OTB), generally refers to a distribution box specially designed for fiber cable



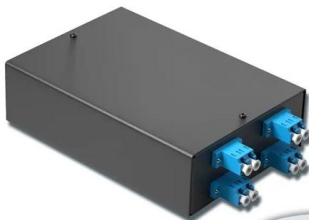
Best Practices for Fiber Optic Cabling in Data Centers

Discover the best practices for fiber optic cabling in data centers, including cable management, labeling, and testing. Learn how to optimize



4-port 8-core LC wall-mounted fiber terminal box (empty frame)

Surface painted Scientific plate fiber Cold-rolled steel plate



Lifetime quality assurance

Free shipping

Customizable for telecommunication

FOA Standard For Installing Fiber Optic Cable Plants

Fiber optic cables may contain multimode optical fibers, singlemode fibers or a combination of the two, in which case it is generally referred to as a "hybrid" cable.

How to Setup a Fiber Optic Home Network for MAXIMUM SPEED!

Beginner's introduction and guide on how to install and set up a Fiber Optic network cable in your home or office. Future-proof your setup, increase bandwidth



The Ultimate Guide to Fiber Optic Termination: A Technical and

Proper fiber optic termination is a crucial process for ensuring the reliability, performance, and long-term durability of any fiber optic network. The process of fiber optic cable termination is the



STS 1000 Wiring Guidelines

Equipment rooms and telecommunications rooms must be large enough to house equipment, controllers, equipment racks, fiber optic equipment, and Service Provider lines.



The FOA Reference For Fiber Optics

Backbone pathways consist of intra- and interbuilding pathways that provide the means for placing backbone cables between the entrance room or space,

Network Topologies and Distances

Environments Enterprise Networks, Carrier Networks - Service Provider Ethernet, SONET, Fiber Channel, InfiniBand, SAS, SATA, PCI Express Outside Plant (FTTX), -Central Office Commercial



IST 220 Chapter 2 Flashcards , Quizlet

The location where an incoming network service (whether phone, Internet, or long-distance service) enters a building and connects with the building's backbone cabling.



15 BEST PRACTICES FOR DATA CENTER FIBER-OPTIC CABLING

Use the location layout to match any specific pre-engineered staggers to the applicable equipment into which they are being plugged.



The FOA Reference For Fiber Optics

The head end is also an entrance facility, with incoming fiber optic cables from the outside Internet connection and outgoing cables from the OLT. Sufficient patch

What Optical Equipment is Needed for Fiber Optic

Discover the essential equipment for setting up a fiber optic network, including ONT, OLT, cables, and more, to ensure fast, reliable connectivity.



wiring

Can an incoming optical fiber cable be wired internally in a house's walls? the incoming fiber drop from the utility pole is outdoor rated cable; if that

The FOA Reference For Fiber Optics



Fiber Optic Network Design Jump To: The Communications System Cabling Design Choosing Transmission Equipment Planning The Route Choosing Components



Fiber Optic Cable Installation and Handling Instructions

The information contained in this manual should serve as a guide to proper handling, installing, testing, and for troubleshooting problems with fiber optic cables.

Application Guide: Wiring Commercial Buildings with

Fiber optic cable is used for everything from demarcation point wiring to network signal distribution to video signal extension. Often, fiber enters the structure to a



Fiber Optic Troubleshooting: Expert Guide for Common

Fiber optic troubleshooting is an essential skill for network administrators, technicians, and engineers responsible for maintaining and



Understanding Fiber Optic Junction Boxes: A Comprehensive

Cable Management: Features like cable entry and exit points, as well as spooling mechanisms, help in organizing and

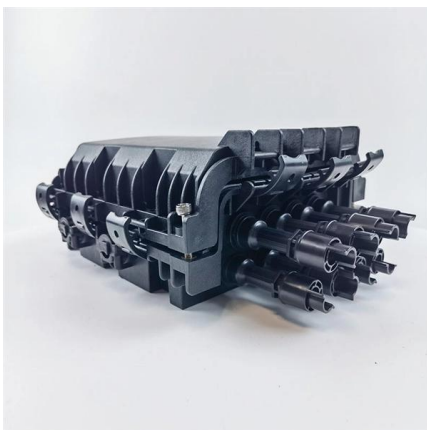


PN535

Once the fiber optic cables have transitioned from the FiberRunner™ into the rack or cabinet, it is critical to properly manage the cable routing prior to entry to the rack-mounted fiber enclosures or

Everything Involved in Fiber Optic Networks

Since fiber does not have the 90 meter distance limitation of UTP cable, you can place all electronics in one location in or near the computer room. The telecom



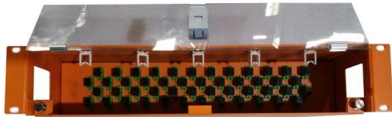
The FOA Reference For Fiber Optics

Fiber optic cables, especially backbone cables, may contain many fibers that



Standard for Installing and Testing Fiber Optics

Fiber optic cables installed without connectors may be terminated by field termination by installing connectors onto the fibers using different types of termination processes or by splicing preterminated



Fiber Optic Cable Installation and Handling Instructions

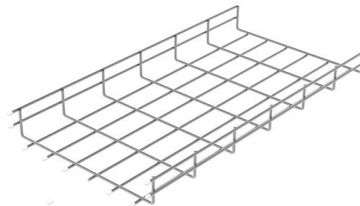
PDF file

PN535 - Panduit

Once the fiber optic cables have transitioned from the FiberRunner™ into the rack or cabinet, it is critical to properly manage the cable routing prior to entry to the rack-mounted fiber enclosures or

15 best practices for data center fiber-optic cabling

"These guidelines help improve operations by minimizing the risk of failure due to inadequate planning, mishandling of fiber cabling, improper testing,



All you need to know about installing fiber to buildings

All you need to know about installing fiber to buildings Fiber connection - fast, secure and easy Property networks In businesses and homes, traditionally has been built with twisted copper cable, LAN cable



Understanding MDF vs. IDF Cabling In Data Networking

The MDF serves as a termination point for incoming data lines, such as fiber optic cables or copper cables, connecting the building to external networks. These lines are typically connected to



Contact Us

For datasheets, pricing, or custom high-speed optical interconnect solutions, please visit:
<https://syropy.com.pl>