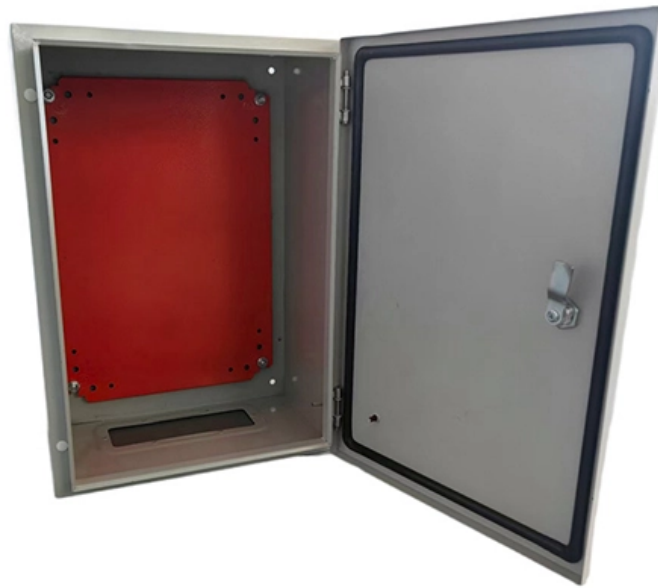


# Fiber optic pigtail loss value





## Overview

---

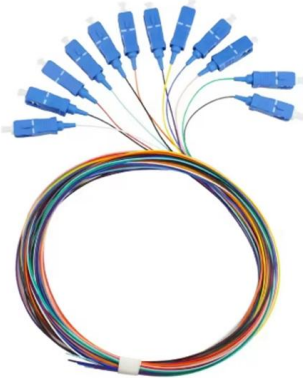
The loss spec for prepolished/mechanical splice connectors or multifiber connectors like MPOs will be higher (0.75 max per EIA/TIA 568). To be able to judge whether a fiber optic cable plant is good, one does an insertion loss test with a light source and power meter and compares that to an estimate of what is a reasonable loss for that cable plant. Insertion loss, also known as attenuation, is the loss of optical power that occurs when light passes through a fiber optic connector. It is caused by factors such as misalignment, air gaps, and imperfections in the connector components. Why is wavelength important?

Different wavelengths experience different attenuation levels.



## Fiber optic pigtail loss value

---



### Comprehensive Fiber Optic Pigtail Wiki and Guidance

There is some loss and attenuation while building an optic fiber system. Correct fiber optic pigtail splicing will bring lower loss and attenuation to the optical fiber

### Insertion Loss and Return Loss: What You Need to Know?

Learn about insertion loss (IL) and return loss (RL) in fiber optic communication, the differences between insertion loss vs. return loss, factors affecting them, and ways to minimize loss

Fast shipment in stock Default white and black, contact customer service for notes

4U standard model

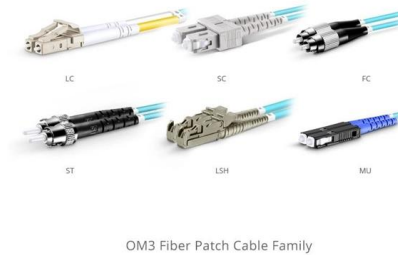


### FIBER OPTIC SC FIBER OPTIC PIGTAIL, SIMPLEX SYSTEM

The pigtails are low insertion loss and high return loss. Good in repeatability and exchangeability. The pigtail shall be factory assembled with high quality control and 100% test. Provide label for easily to

### Determining optical fiber link loss

The optical loss factor is dependent on wavelength--either 850 or 1300 nm for multimode fiber, or 1310 or 1550 nm for singlemode fiber. Fiber loss also varies



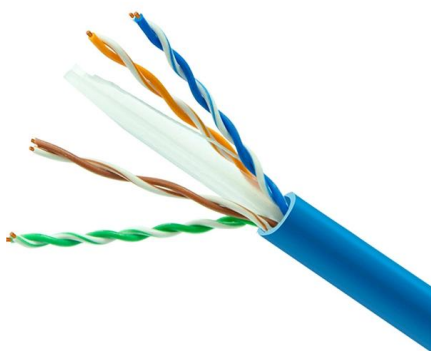
### Understanding Fiber Loss: What Is It and How to Calculate It?

How can we know the value of losses on the fiber link? Read on, this post will teach you how to calculate the losses in optical fiber and judge the fiber link performance.



### Improving Connector Loss and Splice Loss OTDR Measurement

Nonetheless, as this paper demonstrates, an OTDR of sufficiently high resolution and dynamic range, and depending somewhat on the pigtail lengths, can accurately measure the connector loss and



### Guidelines On What Loss To Expect When Testing

Short fiber optic premises cabling networks are generally tested in three ways, connector inspection/cleaning with a microscope, insertion loss testing with a light



## Calculating Fiber Optic Loss Budgets

Power Budgets And Loss Budgets The terms "power budget" and "loss budget" are often confused. The power budget refers to the amount of fiber optic cable plant

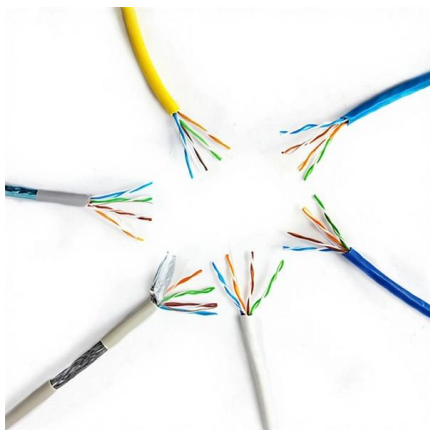
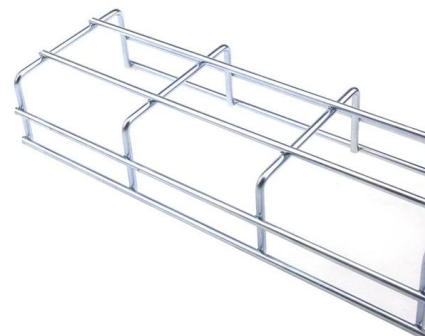


## Fiber Optic Pigtail: The Complete Guide to Types, Splicing Methods

Executive Summary: A fiber optic pigtail is one of the most commonly specified yet least understood components in structured cabling. Get the wrong connector type, the wrong polish, or

## What are Insertion Loss and Return Loss of Fiber Optic

In optical fiber communications, insertion loss and return loss are two important indicators for evaluating the quality of Fiber Optic Cable Assemblies, such as



## What Is Fiber Loss

FAQ - Fiber Optic Loss What is fiber optic loss? It refers to the optical signal attenuation that occurs as light travels through fiber, expressed in dB. What causes fiber loss? Main reasons



### Losses for fiber fiber measuring loss

The optical fiber fusion splicing technology mainly uses a fiber fusion machine to connect optical fibers and optical fibers or optical fibers and pigtails, and fuse the bare fibers and optical fiber



### Insertion Loss vs. Return Loss in Fiber Optical Devices & Network

In optical fiber communication network, insertion loss (IL) and return loss (RL) are two important parameters to uate the end-to-end connection quality between some fiber components, such as fiber

### Link Loss Uncensored , ICT Solutions & Education

What is link loss? It is how much optical power loss accumulates over the fiber link; it's also referred to as attenuation. As part of the network design, architects factor



### ABSTRACT

2.1 Pigtails: The measure of the effectiveness of any termination is the optical performance. With multimode fiber optic connectors, this is evaluated by the insertion loss, or the total optical power



### Fiber optic connector insertion loss

Optical fiber connectors are widely used in optical fiber transmission lines, optical fiber distribution frames, optical fiber test instruments and meters. So what are the key points of

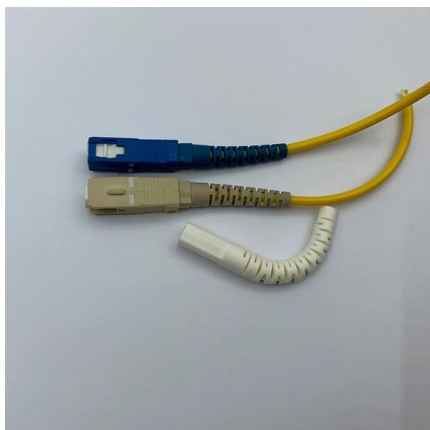


### Fiber Connector Insertion Loss

Fiber optic connectors are widely used in fiber optic transmission lines, fiber optic distribution frames, fiber optic test instruments and meters. So, do you know what are the key points

### Reference to Insertion Loss and Return Loss for Fiber

In this comprehensive guide, we will discuss these two parameters, their significance in fiber optic connectors, and the recommended reference values for



### Fiber Optics Loss Budget Calculation , Fluke Networks

You can either compare this loss value to the application requirement or calculate the expected loss based on how many connectors and splices are in the link along with the length of the fiber link and



## Insertion Loss and Return Loss in Fiber Connectors

What Causes Poor Insertion Loss and Return Loss? Ideally speaking, if the fiber patch cable has no connections, then the minimum loss will be



## Fiber Optic Pigtail: The Complete Guide to Types, Splicing Methods

A quality factory-terminated fiber pigtail connector should exhibit an insertion loss of  $\leq 0.3$  dB and return loss of  $\geq 50$  dB (UPC) or  $\geq 60$  dB (APC). Premium pigtails from reputable

## Fiber Insertion Loss and Return Loss: A Complete Guide

You will get a new value, and the difference between the two values is the insertion loss of the fiber cable. This attenuation is inevitable, so the smaller

PRODUCT CATEGORY				
Open rack Series	Open rack	12U Open rack	18U Open rack	Adjustable Open rack
Wall mount rack Series	Glass door Wall mount rack	Mesh door Wall mount rack	Double section Wall mount rack	Economic type Wall mount rack
Floor standing server rack	Glass door with casters	Mesh door with casters	42U Standard Server rack	Double open door Server rack
Outdoor cabinet	A/C conditioner Outdoor cabinet	Outdoor cabinet with plinth	Outdoor cabinet with fan cooling	Bubble Wall Outdoor cabinet
Splitter series	Bare Fiber Splitters	Blackless Fiber Splitters	ABS Splitter	Plastic Splitters
Splitter series	LCX Splitters	Rack Mount Splitters	Mini Plug-in Type Splitter	Tray Splitters
Patch cord series	LC	SC	FC	ST
FTTH product series				



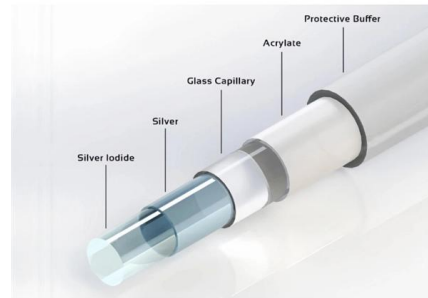
## Losses for fiber fiber measuring loss

The function of the fusion splicer is to splicing two optical fibers together, so the correct use of the fusion splicer is also an important measure to reduce the optical fiber splice loss.



## Calculating Fiber Loss and Distance

Calculating fiber distance involves the loss variables described above as well as the launch power and receive sensitivity specifications on the fiber products.



### More products



## Fiber Insertion Loss and Return Loss: A Complete Guide

According to the standards for the optical communications industry, the return loss of a PC fiber end face connector should be greater than 50 dB, and

## What Is A Fiber Optic Pigtail

In the precision-driven world of fiber optic networking, where every decibel of loss and every reflection matters, the fiber optic pigtail stands as one of



## Optical Fibre Splice Loss

To build a network with optical fibres, one may eventually join two fibre ends with a connector or fusion splicer. The amount of optical power lost at these connections is a concern for many system



## Fiber Optic Loss Calculator

Estimate fiber attenuation, connector loss, splice loss, and budget margin for links. Compare wavelengths, distances, safety reserves, receiver limits, and operating headroom accurately.



## Contact Us

---

For datasheets, pricing, or custom high-speed optical interconnect solutions, please visit:  
<https://syropy.com.pl>