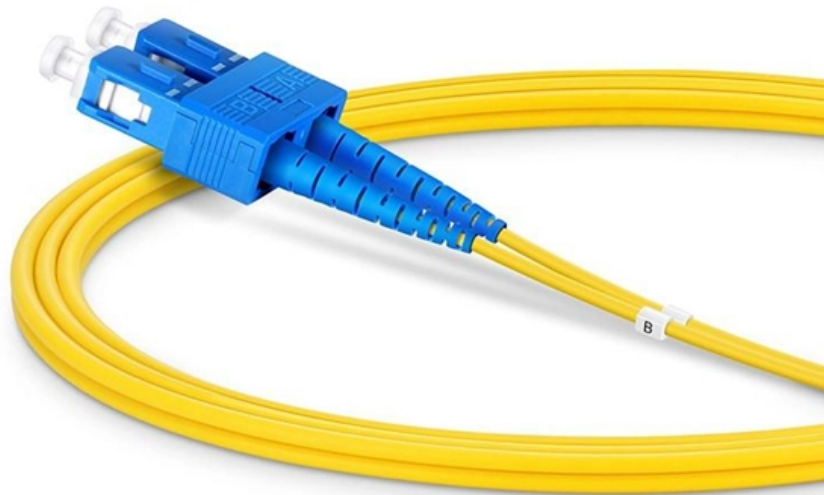


Fireproofing rating of distribution box





Fireproofing rating of distribution box



Fire rated electrical enclosure, PH-120 junction box

To simplify basic installation, we have created the BPGF, this is a pre-assembled enclosure with everything you need to complete a fire-rated electrical connection.

Fire Resistance in Electrical Enclosures: Material

A fire can cause catastrophic damage to electrical systems and pose life-threatening risks. But how can you safeguard your equipment? Fire-rated



Fire Resistance in Electrical Enclosures: Material Considerations

Choosing a fire rated box requires you to understand the fire resistance standards. These standards specify how well a material or enclosure can stand up to fire. They are developed

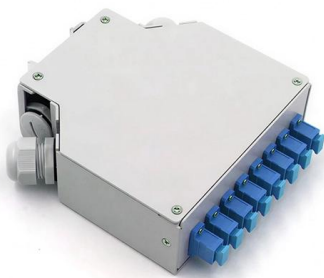
Fire protection guide for electrical installations

The PYROPLUG® Box system from OBO is used to create cable insulation with boxes made of foam. The system is particularly suitable for simple mounting of cable insulation in lightweight partitions.



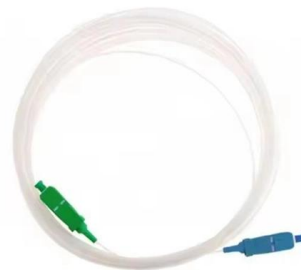
FM guide to the selection of enclosures for distribution boards

All equipment must be installed following state-of-the-art procedures and in compliance with the manufacturer's assembly instructions. If components with varying classes of protections are installed,



Cable Fire Protection - Fire Security

FS cable coating systems protect against loss of life and loss of production. Our coatings prevent flame propagation and prevent escalation from a small fire to a



Fire rated Enclosures electrical enclosures

Available as Ex certified (Sira 08 ATEX 3212 or IECEx SIR 13.0038X and fitted with an M6 earth stud). Finished in grey (RAL 7001) as standard. Also available in

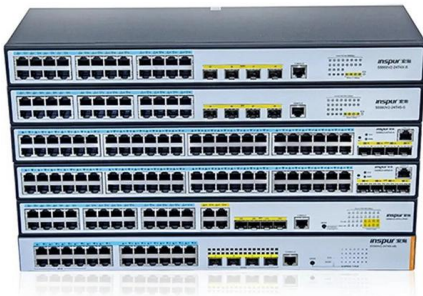


IP Ratings Explained: How to Choose the Right

Understand IP ratings and learn how to choose the right weatherproof junction box for safe, durable electrical installations in any environment.



- ✓ TELECOM CABINET
- ✓ BRAND NEW ORIGINAL
- ✓ HIGH-EFFICIENCY



Guide for Protection of Recessed Boxes in Fire-rated

Firestop putty pads, firestop box inserts, firestop cover plate gaskets and endothermic mats are products that are often chosen for recessed box protection,

Fire protection enclosures

To check the I30/I90 classification of the fire protection enclosures, testing has been carried out in accordance with DIN 4102 Part 11.



FM guide to the selection of enclosures for distribution boards

If components with varying classes of protections are installed, the protection class of the resulting distribution board corresponds to that of the unit with the lowest degree of protection.



Fire Rated Enclosures , Fire Resistant Junction Boxes

The Abtech range of fire rated electrical junction boxes are specified for use in building services and hazardous areas, where ATEX certified enclosures are



1.An Ultimate Guide for Metal Distribution Boxes

1) Metal Distribution Boxes Constructed from steel, aluminum, or cast iron, metal distribution boxes are highly durable and resistant to mechanical damage. Ideal



FIREBOX Fire-resistant junction box , Palazzoli

With high IP66/IP67 protection, FIREBOX junction boxes retain functionality even in outdoor environments, maintaining fire resistance specifications from class E30 to



Understanding Fireproof Electrical Distribution Box: Grades, Technical

Discover the grades, technical specifications, and industrial uses of fireproof electrical distribution boxes. Learn about their performance, safety standards, and applications in protecting critical electrical



Explosion proof distribution box standards and installation issues

Explosion-proof distribution boxes are mainly used in coal mines, fire stations, petroleum, petrochemical installations and textile and other flammable and explosive places. These places are more prone to



Outdoor Electrical Distribution Box Specifications: NEC

Complete specification guide for outdoor electrical distribution boxes covering NEC Article 312 requirements, NEMA ratings, sizing calculations, and

A comprehensive understanding of distribution box

? Introduction Distribution boxes are at the heart of safe and organized electrical systems--whether in residential, commercial, or industrial settings. But



Fire Rated Enclosures

Fire rated enclosures, fire junction boxes, are designed to meet the specifications for building, E30, E60, E90, E120 fire safety. Get your free estimate!

Best Material for LV Distribution Box , Axis



Electricals

Learn which material is ideal for your LV distribution box. Axis Electricals explains how to choose the right enclosure for safety, durability, and



Outlet Boxes for Use in Fire Rated Assemblies

Outlet Boxes for Use in Fire Rated Assemblies UL evaluates both metallic and nonmetallic outlet and switch boxes for use in fire-resistant rated assemblies, and provides guidance for proper installation

Guide for Protection of Recessed Boxes in Fire-Rated Walls

referred to as a membrane penetration. Such penetrations occur most frequently due to the installation of recessed electrical boxes. Other recessed boxes installed in fire rated walls can include washing



IP65 Distribution Box

Description: SMICO's IP65 protection rating is one of the common protection rating standards for outdoor plastic distribution boxes. IP represents the international



Fire-Resistive Walls and Electrical Boxes

Walls with a fire-resistive rating greater than two hours will require a special study. For the two-hours-or-less walls, the first requirement is that the certified electrical



What Do IP Ratings Mean for Your Distribution Box?

For Distribution Box units that generate significant heat, an overly sealed high-IP model could lead to overheating issues. Maintenance is another

Key Steps When Choosing the Right Waterproof Level

Learn how to choose the right waterproof level for distribution boxes. Follow 8 key steps and explore IP65+ solutions from trusted manufacturer



Fire protection cable boxes: Spelsberg

Fire protection junction boxes In the event of a fire, only absolutely reliable products prevent the spread of fire and guarantee safe function of electrical systems relevant for rescue and escape in buildings



Contact Us

For datasheets, pricing, or custom high-speed optical interconnect solutions, please visit:

<https://syropy.com.pl>