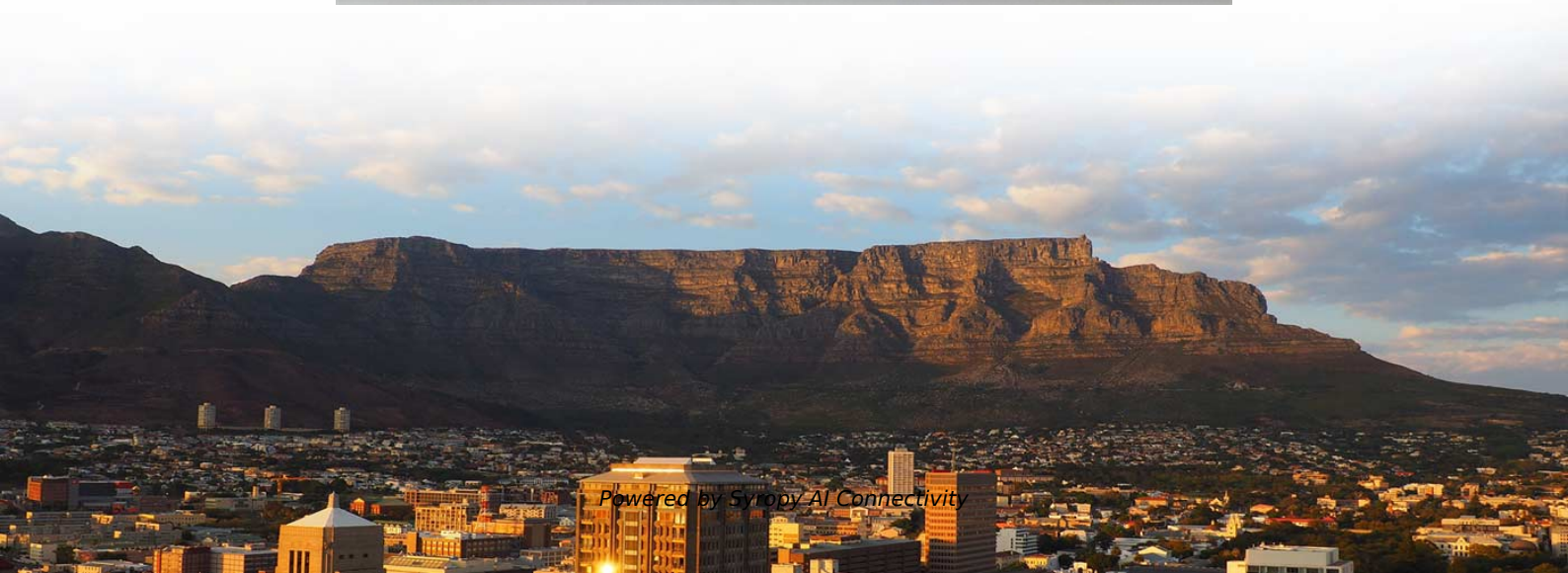


# **Gray single-mode fiber optic cold splice**





## Overview

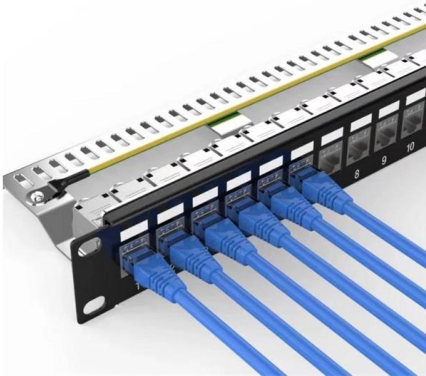
---

The No Polish Connector (NPC) enable fast, on-site installation of kink proof, 1. Designed for field technicians, labs, and network installations, these connectors ensure stable. FASTConnect® field-installable connectors are factory pre-polished connectors that completely eliminate the need for hand polishing in the field. 3dB, Return Loss: >50dB) with A-level tricyclic ceramic core, which can be reused upto 1000 times. The TS126 Mechanical Fiber-to-Fiber Splice is compatible with fibers that have cladding sizes between Ø125 µm and Ø140 µm.



## Gray single-mode fiber optic cold splice

---



### **The Ultimate Guide to Fiber Optic Termination: A Technical and**

Learn everything you need about fiber optic termination, including connector and splicing methods, essential tools, and best practices for reliable and high-performance networks. Discover

### **The difference between optical fiber cold splicing and**

Optical fiber transmission has the advantages of wide transmission frequency, large communication capacity, low loss, no electromagnetic



### **Fast Splice Fiber Optic Connector , FiberMania**

Using a precision-aligned, factory pre-polished ceramic ferrule, this connector enables fast on-site fiber connection while maintaining stable optical performance.



### **New SC APC UPC SM Single-Mode Optical Connector**

New SC APC UPC SM Single-Mode Optical Connector FTTH Tool Cold Connector Fiber Optic Fast Connector SC Embedded Quick Connector Reusable, reducing



### **LC, Single-Mode OS2, Field Installable Splice Connector**

Field-Installable Connectors. The mechanical splicing method uses no epoxy or polishing, requires no special tools for assembly in the field, and offers reusable termination capability.



### **The FOA Reference For Fiber Optics**

Fiber optic joints or terminations are made two ways: 1) splices which create a permanent joint between the two fibers or 2) connectors that mate two fibers to



### **The principle of optical fiber cold splice technology**

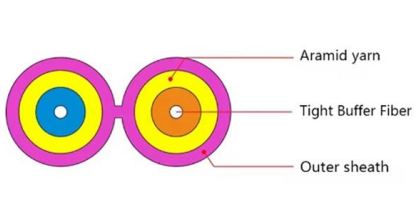
Principle of Optical Fiber Cold Splice Technology  
Optical fiber cold splice technology is based on the use of mechanical connectors to join two fiber-optic cables. These connectors are





### Optical Fiber Cold Splicing and Fusion Splicing

It is used to connect optical fiber or optical fiber butt pigtail, which is equivalent to making a joint (fiber butt pigtail refers to the butt joint of the fiber core of the optical fiber and the pigtail

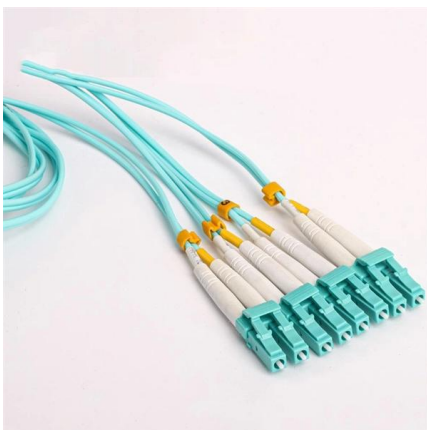


### Fusion Splicing Guidance for Single-Mode Fibers A

Understanding fusion splice process capability and splice loss measurement will ensure that network owners, designers, contractors, and technicians have realistic expectations of splice loss, especially

### 100 Pcs SC Fiber Optical Fast Cold Connector, Single Mode

?Quick and convenient installation?The cold connector can be used for quick fiber cold connection at room temperature, and the package comes with detailed English installation diagram, which much



### FASTConnect® Mechanical Connectors

Proven mechanical splice technology ensuring precision fiber alignment, a factory pre-cleaved fiber stub and a proprietary index-matching gel combine to offer an



### 20PCS SC Fiber Optical Fast Cold Connector, Ceramic Core Fusion Splice

Amazon : Locadence 20PCS SC Fiber Optical Fast Cold Connector, Ceramic Core Fusion Splice Type Fiber Optic Patch Cable, Single Mode Fiber Quick Connector : Industrial & Scientific About this



### Suitable for single mode multimode cold splice fiber optic splicing kit

Web site;; Used for fiber butt fiber or fiber, optical fiber tail docking and fusion contrast, refers to the cable machinery through the "cold" in place of, the whole process

### Optical fiber cold splicing and hot melting steps

Optical communication is now the dominant network transmission method in society, which is nothing more than because it has many advantages and is now a new transmission



### FC Single-Mode Cold Splice Connector Kit (50 Pieces)

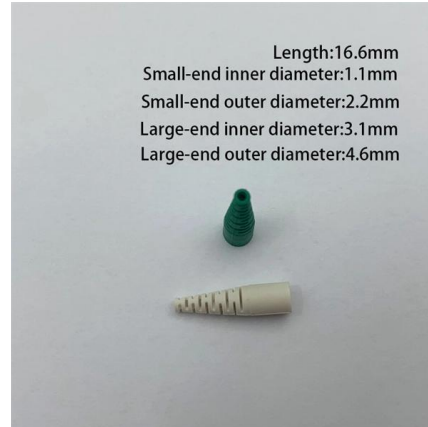
Experience fast, reliable installation with this FC Single-Mode Cold Splice Optical Fiber Connector Kit, including 50 quick-connect pieces designed for high-precision splicing of single-mode fibers. The





## 50Pcs FC Single-Mode Cold Splice Optical Fiber Cable Splice

50Pcs FC Single-Mode Cold Splice Optical Fiber Cable Splice Connector Pre-Buried Fiber Optic Quick Connector Description 1. The scaled product technology is mature and exquisite, and the supply is



## Fiber Splices - mechanical splicing, fusion splicing,

What are Fiber Splices? Fiber splicing means joining two optical fibers (permanently or temporarily) such that light guided in one fiber and reaching the joint (splice)

## Fiber Fast Connector Buying Guide: SC/APC Cold Connector Types

A fiber fast connector, also known as a mechanical splice or cold connector, is a field-installable connector that terminates fiber optic cables without requiring a fusion splicer.



Ordering information

Model	1	2	3	4	5	6
Model	SP2M1	SP2M2	SP2M3	SP2M4	SP2M5	SP2M6
Product name	Patch Panel	Patch Panel	Patch Panel	Patch Panel	Patch Panel	Patch Panel
Illustration						
Model	1	2	4	1	2	4
Maximum number of cores	144	288	576	144	288	576
Product size (Including product and packaging)	482.0*202.0*44.0mm	482.0*202.0*81.0mm	482.0*202.0*177.0mm	482.0*202.0*44.0mm	482.0*202.0*81.0mm	482.0*202.0*177.0mm
Standard color code	RAL9005	RAL9005	RAL9005	RAL9005	RAL9005	RAL9005
Inventory	2	2	2	2	2	2

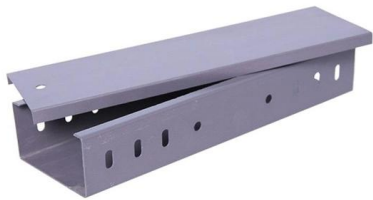
## Single Mode Fiber Optic Connectors And Splices

A feature of the OPTALIGN\* SM Connectors is the relative ease and speed of attachment to fiber optic cable in the field, without the use of epoxy or polishing procedures. The alignment guide concept has



### **No Polish Connectors SC APC, Single-mode Angle Splice 250/900**

The No Polish Connector (NPC) enable fast, on-site installation of kink proof, 1.6 to 3 mm cable with bend insensitive, single mode fiber. The SC PC and SC APC compatible connectors consist of a



### **Commscope FACT-3ERHPLGS , FACT Fiber Optic**

Commscope FACT-3ERHPLGS , FACT Fiber Optic Patch/Splice Panel, gray, 3E high, 144-port, singlemode, loaded with LC/APC adapters and B-grade pigtailed,

### **MX Fiber Lock Mechanical Splice Single Mode**

The MX Fiber Lock Mechanical Splice Single Mode Connector - Pack of 10 provides a quick and reliable solution for single-mode fiber termination without the need for



### **760240587 , FACT-1ERHPLFS**

FACT® Fiber Optic Patch/Splice Chassis, gray, 1E high, 48-port, singlemode, loaded with LC/UPC adapters and B-grade pigtailed, SMOUV splice tray type, right-hand patch



### **fiber optic cold connection**

Fiber optic cold connection, also known as mechanical splicing, is a widely used method of connecting optical fibers in a network. Unlike fusion splicing, which uses heat to join two optical fibers



### **Temporary Fiber Splices**

Our mechanical fiber-to-fiber splices hold fiber with a self-gripping clamshell design. They are easy to use, providing a quick solution when performing emergency

### **The FOA Reference For Fiber Optics**

Table of Contents: The FOA Reference Guide To Fiber Optics Singlemode Fiber Termination and Polishing Because the core diameter of singlemode fiber is only



### **How to Splice 3 Types of Mini ODF , Fiber Optic Splicing , Single Mode**

Learn how to splice three types of Mini ODFs (Optical Distribution Frames) for single-mode fiber optics in this step-by-step guide! Whether you're a beginner or a pro, this tutorial covers



## How to do the cold splicing when the fiber optic cable is broken?

The most detailed cold splicing procedures for broken fiber optic cable. You can source the fiber optic cables or other cabling products from the manufacturer



### FC Single-Mode Cold Splice Connector 50Pcs Optical Fiber Cable Pre

Product Summary: Koolenry FC Single-Mode Cold Splice Connector 50Pcs Optical Fiber Cable Pre-Buried Quick Connector From Koolenry

## Contact Us

---

For datasheets, pricing, or custom high-speed optical interconnect solutions, please visit:  
<https://syropy.com.pl>