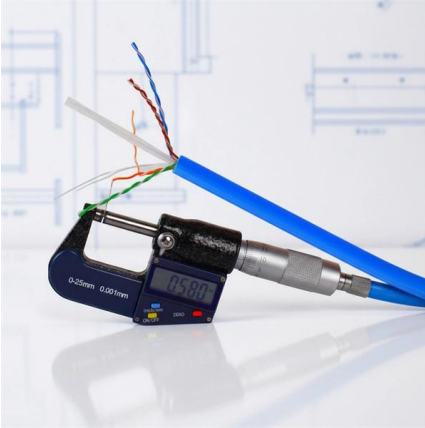


Green Segmented Beam Splitter





Green Segmented Beam Splitter

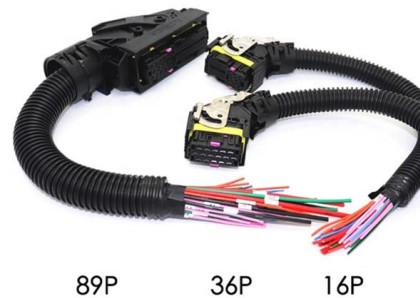


Precision Beamsplitters & Quad-Channel Imaging

A beam splitter (or beamsplitter) is an optical component used to split incident light into two separate beams, typically based on wavelength or polarity. This precise

Beam Splitter green - Filtrop AG

Shop Beam splitters Beam Splitter green Beam Splitter green CHF 180.00 In stock Add to cart excl. VAT plus shipping costs



Diffraction beam splitter

7x7 matrix using green laser and diffractive beam splitter. The diffractive beam splitter (also known as multispot beam generator or array beam generator) is a single optical element that divides an

Beam combiner/splitter

CNI can offer complete combining laser system, with the polarization beam splitter, which makes the output power double of the single laser. The system is available for both red lasers, blue lasers and



Precision Beamsplitters & Quad-Channel Imaging

Our selection includes plate and cube designs, offering polarizing, non-polarizing, and dichroic options. All our custom beam splitters are made from premium glass,

Beam Splitters: Explained

Beam splitters are a fundamental element in optical systems. Beam splitters are, in essence, optical components used to divide a single light source



Beamsplitters

Application Spotlight: Quad-Channel Beam-Split Imaging Optical System At Avantier, we don't just manufacture premium beamsplitters--we engineer complete optical



Filter and Beam Splitters for Light Splitting , Jenoptik

Jenoptik coats materials with filters and beam splitters so you can adapt and use light beams in the most effective way. Contact us for more information.



Beam combiner/splitter

Beam Combiner RGB Beam Combiner RGB beam combiners enable any two or three primary colours in the visible wavelength region to be combined. Combiners are available for either 2 or 3 wavelengths:

Beam Splitter Selection Guide

Our beam splitters are made from high grade glass material with laser grade surface flatness & surface quality for tighter tolerance on the splitting ratio.



Equal-intensity beam splitter fabricated by segmented

An equal-intensity beam splitter (EIBS) for passive laser speckle reduction is reported. The EIBS consists of a segmented half-wave plate (SHWP) with the



Optical Beamsplitters , Beamsplitter Selection , Edmund

Find top-quality Beamsplitters for laser systems & more. Shop a variety of beamsplitters at Edmund Optics for precision light splitting needs. Click Here!

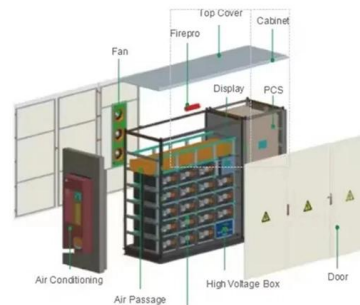


Beam Splitters

Conclusion Beam splitters are versatile optical components integral to modern technology. Understanding their types, properties, and applications can significantly enhance the design and

Beam splitter

By using high-quality dielectric coatings on optical substrates, the beam splitter offers precise control over the ratio of reflected to transmitted light. This makes it ideal for applications that require precise



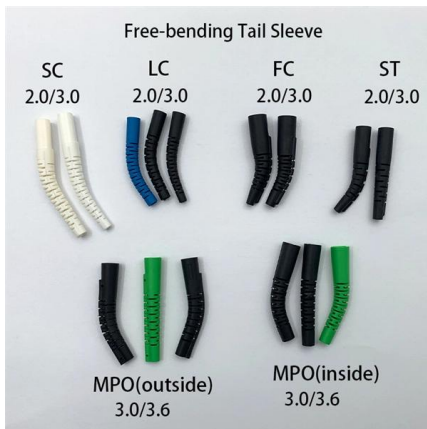
Equal-intensity beam splitter fabricated by segmented half-wave plate

An equal-intensity beam splitter (EIBS) for passive laser speckle reduction is reported. The EIBS consists of a segmented half-wave plate (SHWP) with the designed orientation of the fast axis



05SC16PC.21 UV Cube Beam Splitter

The 05SC16PC.21 UV Laser Line Polarizing Cube Beamsplitter provides efficient narrow-band polarization for moderate power UV lasers. Each 1/2 inch (12.7 mm)



525nm Polarization Beam Combiner/Splitter

525nm Polarization Beam Combiner/Splitter The 525nm Polarization Beam Combiner/Splitter can be used either as a polarization beam combiner to combine light beams from two PM input fibers into a

Beam Splitter

A beam splitter is defined as an optical device that effects a linear transformation of fields presented at two input ports, producing output beams that are related to the input fields in a characteristic manner



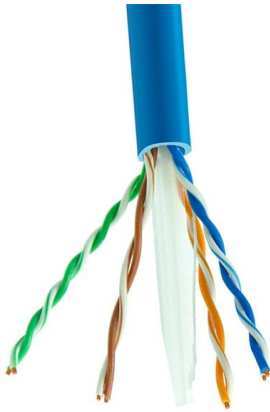
Design of arbitrary energy distribution beam splitters base on

Traditional methods rely on the phase gradient design of generalized Snell's law, which can achieve highly efficient beam splitters with uniform energy distribution.



Optical Beamsplitters , Beamsplitter Selection , Edmund

Light can be split by percentage of overall intensity, wavelength, or polarization state. Edmund Optics offers plate, cube, pellicle, polka dot, or specialty prism



// Polarizing Beam Splitter Optics, Custom Optical

We use optical beamsplitters with unpolarized light sources, such as polychromatic. A light beam splitter is commonly used in applications where polarization state is

Beam Splitter Selection Guide

These beamsplitters are made from high grade glass materials with laser grade surface flatness and surface quality and have a tighter tolerance on the splitting ratio.



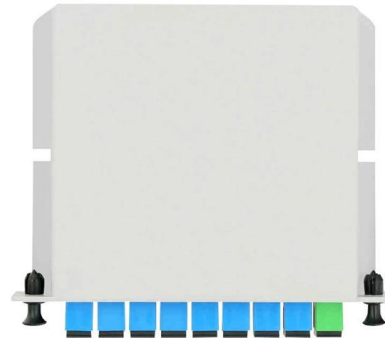
Beam Splitters - optical power splitter, beamsplitter, thin-film

What are Beam Splitters? A beam splitter (or beamsplitter, power splitter) is an optical device which can split an incident light beam (e.g. a laser beam) into two (or sometimes more) beams, which may or



Compact and Ultra-Broadband 3 dB Power Splitter

However, 3 dB power splitters are commonly hampered by trade-offs in device dimensions, operation bandwidth, and fabrication technology. In this



1D Beam Splitter

1D Beam Splitter products The Diffractive Beam Splitter (a.k.a Multibeam or dot generator) is a diffractive optical element used to split a single laser beam into

Precise Dielectric Beamsplitters for Effective Light Separation

Bte Born offers customized dielectric beamsplitters for targeted separation of light into reflected and transmitted components. Get beamsplitters with custom splitting ratios for optimal performance.



Optical Filters and Beam Splitters from Jenoptik , Jenoptik

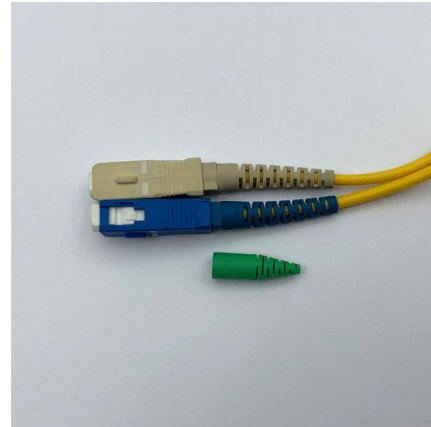
Optical filters and beam splitters from Jenoptik enable you to adapt the spectral ranges of light to your application. Contact us for advice.





Beamsplitters , Coherent

Learn about the vertically integrated capabilities for material growth, fabrication, coating, and assembly, and rigorous QA at Coherent. Discover how these ensure



Beamsplitter , GIAI

A beamsplitter is an optical device designed to divide an incident light beam into two or more separate beams. Beamsplitters are commonly used in a wide range of optical systems to guide light in specific

Contact Us

For datasheets, pricing, or custom high-speed optical interconnect solutions, please visit:
<https://syropy.com.pl>