

# **Grenada Anti-corrosion and Explosion-proof Distribution Box Model**





## Overview

---

BXM (D) 8030 Explosion-Proof Corrosion-Resistant Distribution Box, designed for hazard zones, ensures safe power control and prevents ignition risks. The enclosure is constructed from glass fiber reinforced unsaturated polyester resin molding or. Glass fibre reinforced polyester (GRP), used for manufacturing HTB1P series terminal boxes, was selected to provide maximum protection against corrosion-causing factors and UV radiation. We offer bespoke, custom-made terminal boxes and terminal box combinations, as well as standard products with short delivery times. China Explosion-proof Distribution Box catalog of Anti-Corrosion Electrical Control Box 6 Holes Aluminum The Explosion-Proof Distribution Box Power Instrument Box Industry Water, Exd Iic Explosion Proof and Anti-Corrosion Distribution Box 8 Holes Terminal Box Cabinets provided by China manufacturer. Supermec ATEX Junction Box & Enclosures are designed to satisfy most of our clients' requirements for CONTROL explosion-proof and flameproof enclosures.



## Grenada Anti-corrosion and Explosion-proof Distribution Box Model



### High Quality Anti-Corrosion Cable Explosion-Proof Terminal Junction Box

Our main products are explosion-proof lightings, explosion-proof distribution box, explosion-proof cable gland, explosion-proof fans, explosion-proof junction box and anti-corrosion & dustproof & waterproof

### Ex-Junction boxes and terminal enclosures ATEX

All junction boxes and terminal boxes are designed to meet the essential requirements of the ATEX Directive (94/9/EC). Devices with additional measures



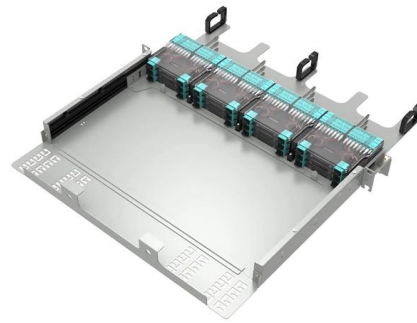
### Distribution Boxes

Distribution Boxes BXM (D)51 Series Explosion proof Distribution Boxes Lighting/Power (Ex d e IIB) Distribution Boxes BXM (D)53 Explosion proof



### Explosion-proof switch boxes [zone 0, 1, 2, 21, 22]

Material design of explosion-proof switch boxes  
The materials used in the manufacture of explosion-proof switch boxes, such as stainless steel, aluminum or fiberglass-reinforced polyester, are selected



### **Explosion-Proof Distribution Boxes & Panels Manufacturer**

The explosion-proof distribution box safely delivers power in hazardous zones (oil, gas, chemical plants) with rugged, spark-resistant casing--ATEX/IECEX, IP66 certified for reliable operation in explosive



### **Ex Local Control Stations & Distribution Boxes**

Manufacture custom made Local Control Stations & Distribution Boxes, local control panel boards and stations, explosion protected control units, distribution



### **GRP Ex Terminal Boxes**

HTB1P terminal boxes, made of glass fibre reinforced polyester (GRP), are designed for use in explosive atmospheres: Zones 1, 2 (gases) and 21, 22 (dusts). They feature high resistance to corrosion and



### GRP Explosion-Proof Electrical Box

GRP Explosion-Proof Electrical Box Power 11 Holes IP66 Waterproof Anti-Corrosion Flame Retardant Distribution Control Box. Ideal for hazardous locations., Alibaba



### Ex-Proof & Flameproof Enclosures & Junction Box , Supermec

All explosion-proof enclosures, lighting or power distribution boxes are manufactured using the latest technologies, both mechanical and electrical, using materials able to resist in most highly corrosive

### Explosion Proof Distribution Box & Electrical Enclosures

Durable Hexlon Explosion Proof Distribution Boxes and Electrical Enclosures, IECEx and ATEX certified for Zone 1 and Zone 2.



### Explosion corrosion-proof illumination (power) distribution box

The product has strong anti-corrosion ability and impact resistance, and the outer casing has good explosion-proof performance. The product is laser-engraved into a permanent "Ex" explosion-proof



## Explosion Proof Enclosures

Ex-Proof & Flameproof Junction Boxes & Enclosures Supermec ATEX Junction Box & Enclosures are designed to satisfy most of our clients' requirements for CONTROL explosion-proof and flameproof



## Explosion-Proof Corrosion-Resistant Distribution Box BXM (D)8030

BXM (D) 8030 Explosion-Proof Corrosion-Resistant Distribution Box, designed for hazard zones, ensures safe power control and prevents ignition risks.

## Explosion-proof junction box, Explosion-proof terminal

Find your explosion-proof junction box easily amongst the 44 products from the leading brands (4B Braime Components, KROMA MEC, STAHL, ) on



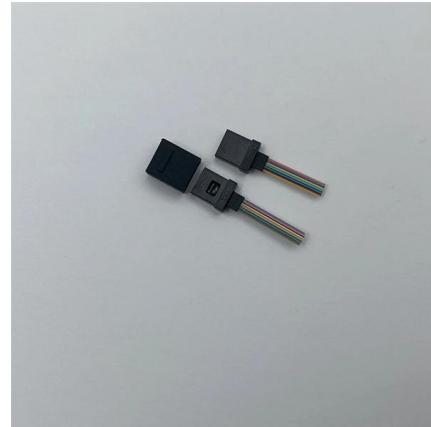
## Surface-mounted Distribution Box, 8 Module Circuit Breaker

This 8-module surface-mounted distribution box features IP65 waterproof protection and flame-retardant, impact-resistant plastic construction. Designed for both indoor and outdoor use, it includes a



## Explosion-Proof Control & Distribution Boxes

The MAMX02/03 Series Explosion-Proof Control and Distribution Boxes are engineered to deliver advanced protection and long-term performance



## Terminal boxes , Junction boxes , Ex , Ex e , Ex d , ATEX , Explosion

Safely conduct, connect and distribute energy in hazardous areas with R. STAHL's terminal boxes. We offer bespoke, custom-made terminal boxes and terminal box combinations, as well as standard

## Stainless Steel Explosion-Proof Corrosion-Resistant Distribution Box

BX51 Stainless Steel Explosion-Proof Distribution Box is engineered to control power distribution safely in explosive-prone areas.



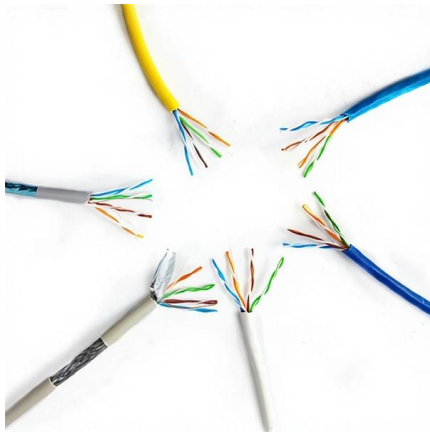
## Explosion proof distribution box standards and installation issues

Explosion-proof distribution boxes are mainly used in coal mines, fire stations, petroleum, petrochemical installations and textile and other flammable and explosive places. These places are more prone to



**Principle and applicable area of explosion-proof distribution box**

Because when explosion-proof distribution boxes are properly specified, installed, and maintained, they become invisible guardians. They represent the quiet professionalism of engineers



**Explosion-Proof Electrical Box: Principles, Selection, and Industrial**

The main structure of an explosion-proof electrical box includes the housing, cover, flameproof joints, sealing rings, cable entries, and internal component mounting brackets. A well

**Explosion proof distribution box**

Types of Explosion-Proof Distribution Boxes An explosion-proof distribution box is a critical safety component engineered for use in hazardous environments where flammable gases, vapors, liquids,



**Helon BJX Terminal Box Explosion Proof**

Helon BJX adalah terminal box explosion proof untuk instalasi elektrik industri yang tersertifikasi ATEX, IECEx dan IP66





## Explosion Proof Box & Cabinet

Product features: The explosion-proof control cabinet (box) can install various instruments inside. Low-voltage electrical appliances, frequency converters, PLCs, soft starters, and computer systems can

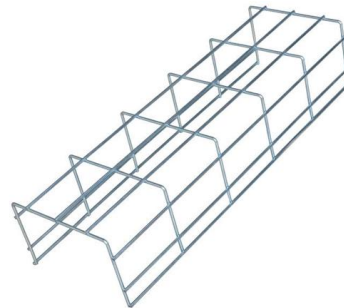


## Explosion-proof Distribution Box

Explosion-proof Distribution Box - Shenhai Explosion Proof Technology Co., Ltd. - page 1.

## Ex Local Control Stations & Distribution Boxes

Atex control stations, explosion protected control units and distribution boxes made stainless steel maritime grade AISI 316L or AISI 304L. Atex Delvalle provides a



## Contact Us

For datasheets, pricing, or custom high-speed optical interconnect solutions, please visit:  
<https://syropy.com.pl>