

Grounding at the beginning of the cable tray



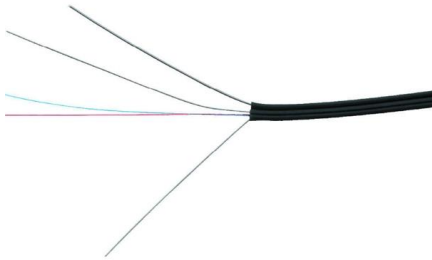


Overview

Grounding in cable trays allows electrical leakage from the outer surfaces of the conductors to be channeled into the tray. It helps to safely direct dangerous currents that may result from electrical faults to the ground. Cable tray may be used as the Equipment Grounding Conductor (EGC) in any installation where qualified persons will service the installed cable tray system. It involves connecting cable trays to the facility's grounding system, providing a low-impedance path for fault currents and protecting personnel.



Grounding at the beginning of the cable tray



The Importance of Grounding in Cable Trays and How to Do It?

Grounding in cable trays allows electrical leakage from the outer surfaces of the conductors to be channeled into the tray. It helps to safely direct dangerous currents that may result

Understanding Cable Tray Grounding: A Comprehensive Guide

This comprehensive guide delves into the complexities of cable tray grounding, offering in-depth insights into its importance, principles, design considerations, installation best practices, and



Cable Tray Grounding: Power, Instrumentation, and Telecommunications

Where cable tray systems contain only signal and communication circuits that operate at low energy levels, power grounding per NEC Section 318-7 is not appropriate, but cable tray grounding for



Insufficient Cable Tray Grounding: Hazards, Inspections,

Discover the dangers of insufficient cable tray grounding, from equipment damage to fire risks, and explore effective inspection practices to



Cable Tray Grounding FAQ

Construction projects using cable tray often need hundreds or thousands of clamps to connect grounding jumpers between tray-sections, or to connect each tray section to a continuous ground

NEC Standards for Cable Trays: Grounding, Fill Capacity

Our solutions emphasize mandatory grounding and bonding for metallic trays, firestop systems at penetrations, and mesh tray options that reduce installation time while maintaining



Equipment Grounding Conductors for Cable Tray Systems

Cable tray wiring systems have excellent safety and dependability records. These excellent records are the result of cable tray's unique features



Cable Tray Grounding Wire: What You Need to Know

Discover the best practices for Cable Tray Grounding Wire installation. Learn key requirements, safety tips, and material choices to ensure a



Grounding Inspection of Steel and Aluminum Cable Tray Systems

Steel and aluminum cable tray systems are excellent equipment grounding conductors if they are properly designed, specified, installed, and inspected. The NEC requirements for cable tray

Equipment Grounding Conductors for Cable Tray Systems

Cable tray wiring systems have excellent safety and dependability records. These excellent records are the result of cable tray's unique features plus the proper



Cable Tray Grounding: Power, Instrumentation, and

Cable tray systems are not required to be mechanically continuous, but shall be electrically continuous. Cable trays are also bonded to conduit, cable channel or other wiring drops. They must also be



Cable Tray Supports & Clamps

Type GBM high copper alloy cable tray clamps hold a single through cable directly on the cable tray surface. Grounding clamps have a copper alloy cast body with durium bolts, nuts, and washers. Tin



Grounding Inspection of Steel and Aluminum Cable Tray Systems

It is essential that the grounding of cable tray systems, including the cables in the tray systems, is inspected for compliance with the grounding requirements in the National Electrical Code (NEC)

Grounding and Bonding of Cable Trays

If a wire mesh cable tray is supporting cable with a built-in equipment grounding conductor or control or signal cables, then the tray should have a low impedance



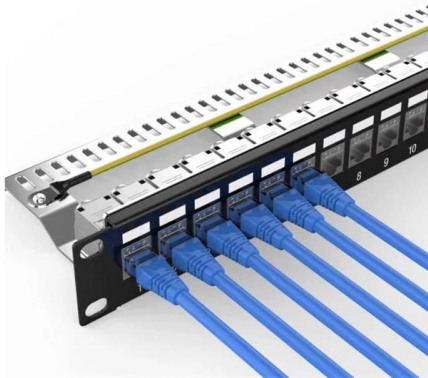
Equipment Grounding Conductors for Cable Tray Systems

Equipment Grounding Conductors for Cable Tray Systems Cable tray wiring systems have excellent safety and dependability records. These excellent records are the result of cable tray's unique



Earthing & Bonding in Cable Tray Systems

Learn why earthing and bonding in cable tray systems is essential for electrical safety, grounding, compliance, and preventing faults in modern installations.



Practices For Grounding and Bonding of Cable Trays

Metallic cable trays must be grounded and can serve as an equipment grounding conductor if the metal cross-sectional area meets minimum requirements. Proper

Grounding Requirements for Electrical Cables, Cable Trays, and

Guidelines for grounding electrical cables, busbars, and cable trays in wiring projects, ensuring safety and compliance with industry standards.



Practices for grounding and bonding of cable trays

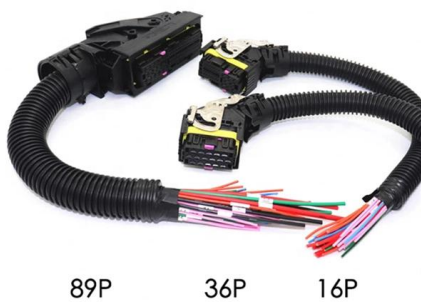
Grounding and bonding of cable trays There are three wiring options for providing an EGC in a cable tray wiring system: An EGC conductor in or on



Cable Trays and Fittings



Streamline cable management with our cable trays and fittings. Browse our selection for reliable, durable options tailored to your project requirements.



Grounding cable trays: requirements, norms, instructions

For example, trays of the DKS brand are grounded at least at two points - at the beginning and end. The wire channels for cable laying are conductive, therefore, they need to be connected to a potential

Grounding Inspection of Steel and Aluminum Cable Tray Systems

The grounding of cable tray systems, including the cables in the tray systems must be inspected for compliance with the grounding requirements in the NEC.



How to Properly Ground and Bond Structured Cabling Systems, CMW

The correct way to ground and bond a cabling system is to ensure all conductive components, such as cable trays, patch panels, racks, and metallic enclosures, are electrically





8 Essential Control Panel Wiring Guidelines for Electronics

7. Grounding Poor electrical grounding is one of the top causes of control panel failure. It's a human safety risk and produces electrical noise that hampers device performance. Route your



Prevent Fire and Electric Hazards When Cable Trays Used

If not designed and installed properly, wiring inside cable trays may pose hazards such as fire, electric shock, and arc-flash blast events.

What are the requirements for the grounding of cable trays specified in

Summary: The key to grounding metal trays lies in "starting with 2 points, adding one every 20-30 meters, using 2 anti-loose bolts for galvanized trays, and crossing 4mm² copper wire for



Contact Us

For datasheets, pricing, or custom high-speed optical interconnect solutions, please visit:
<https://syropy.com.pl>