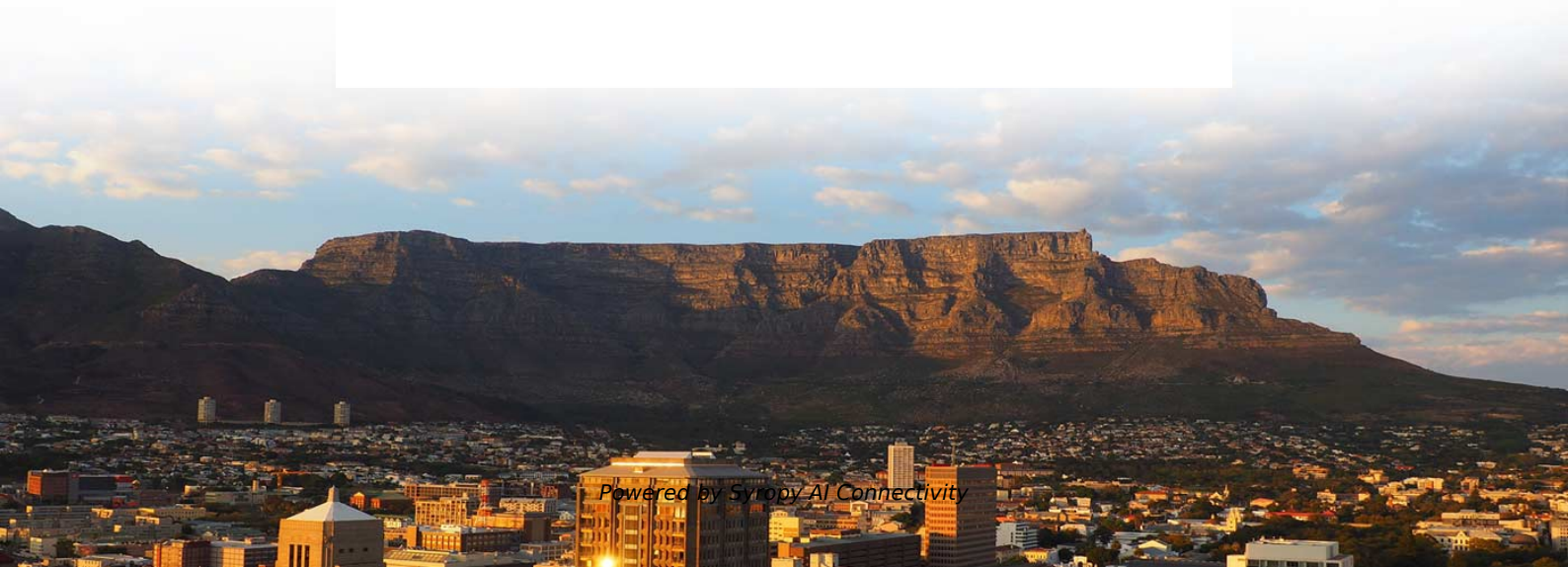


# **How to determine the positive and negative terminals of a laser diode**





## Overview

---

Touch the red probe (positive) to the suspected anode and the black probe (negative) to the cathode. If reversed, the reading will show "OL" (open loop), indicating reverse bias. As a bipolar component, a diode has an anode and a cathode at its two terminals, just like the positive and negative terminals in a circuit power source. How to Determine If a Diode is Forward or Reverse Biased?

Can You Test Polarity with a Multimeter?

What is Diode Polarity?

Diode polarity refers to the direction in which a diode allows electrical current to flow. If it produces light, you were right, if it produces smoke, you were wrong :) Im 50% sure the left is negative.



## How to determine the positive and negative terminals of a laser diode

---

### How to check the positive and negative terminals of a



By observing the identification of the diode, the length of the pins, and using a multimeter for testing, you can easily determine the positive and negative

### Welcome to talkingelectronics

On MOST IR diodes this is the NEGATIVE terminal. On MOST visible laser diodes the case is POSITIVE! If the case is positive on your particular laser diode you



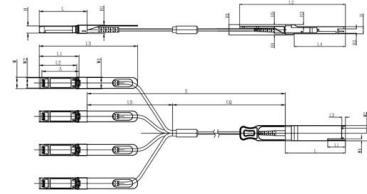
### Diode Polarity: 3 Methods for Identifying Anode and Cathode

Identifying the anode and cathode of a diode is essential for proper circuit design. Various methods, such as circuit symbol recognition, appearance characteristics, and multimeter testing,



### Diode Polarity: Understanding and Identifying Diode

Learn everything about diode polarity, including diode direction, diode anode vs cathode, diode markings, polarity symbols, and practical tips for



Unit mm

QsFP28	L	L3	L2	L3	L4	W	W1	W2	H	H1	H2	H3	H4	H5	H6
Max	72.2	-	128	4.35	61.4	18.45	-	6.2	8.6	12.4	5.35	2.5	1.6	2.0	-
Type	72.0	-	4.20	61.2	18.35	-	-	8.5	12.2	5.2	2.3	1.5	1.8	6.55	-
Min	68.8	16.5	124	4.05	61.0	18.25	2.2	5.8	8.4	12.0	5.05	2.1	1.3	1.6	-

SFP28	L	L1	L2	L3	W	W1	W2	H	H1	A
Max	57.6	47.7	44.55	119.9	13.8	14.0	12.3	8.7	10.3	45.25
Type	57.4	47.5	44.35	117.9	13.55	13.8	12.1	8.5	10.1	45
Min	57.2	47.3	44.15	115.9	13.3	13.6	11.9	8.4	9.9	44.65



### how can I determine the polarity for this laser diode?

Use a multimeter and check the polarity symbols. Measure the forward and reverse voltages and determine the polarity.

### Understanding SMD Polarity: Capacitor, LED, Diode,

SMD polarity refers to the correct directional placement of components on a PCB. When it comes to polarized components like LEDs, diodes, and



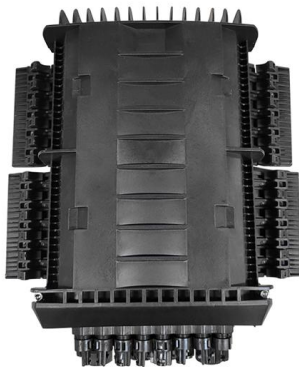
### Understanding the Laser Diode Schematic Symbol: A

The schematic symbol of a laser diode consists of a diode symbol with two arrows pointing outwards, representing the emitted light. The positive and negative



### Laser Diode: Working Principle, Diagram & Applications

A laser diode is a specialized semiconductor device that emits highly directional, coherent light through the process of stimulated emission. Unlike conventional light-emitting diodes (LEDs), which produce



### Diode reading for beginners (Easy Guide, 2026)

Diode reading for beginners Before we get into diode reading. I believe it is effective to first know what a diode is. This will help us give a general

### Diode Polarity: 3 Methods for Identifying Anode and

As a bipolar component, a diode has an anode and a cathode at its two terminals, just like the positive and negative terminals in a circuit power



Length:33.5mm  
Small-end inner diameter:4.0mm  
Large-end inner diameter:6.0mm



### Diode Symbols: A Comprehensive Guide to

A typical diode symbol consists of an arrow pointing toward conventional current flow (positive to negative) and a line representing the



## How to Distinguish the Positive and Negative Poles of a

A fundamental skill for engineers and enthusiasts is distinguishing between the positive (anode) and negative (cathode) poles of a diode, as

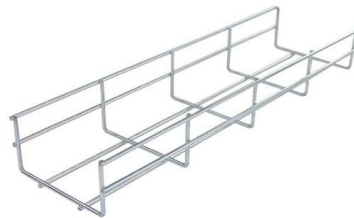


## How to Tell Which Way Round a Diode Should Be

Learn how to tell which way round a diode should be by reading the diode symbol direction or using a multimeter tool to find which side is positive.

## Laser Diode

Most laser diodes actually house two semiconductor devices in a single package -- the laser diode itself and a monitor photodiode for feedback



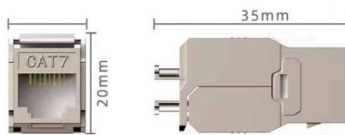
## Diode anode cathode identification (Easy Methods, 2026)

In this article, we will talk about diode anode cathode identification. We will know which terminal is positive and which is negative.



## Laser Diode Characteristics and Definitions

A laser diode, similar to a light emitting diode (LED), is comprised of a junction between two semiconductors (one positive, one negative). This junction is known as a p-n junction. These

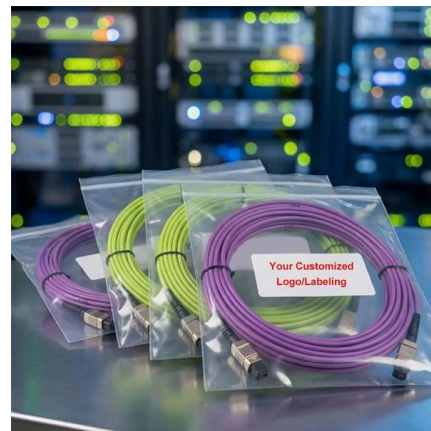


## Laser Diode Characteristics, Precautions for Use and Drive Circuit

Laser diodes (LD) are semiconductor devices that convert electrical energy into high-power optical energy. These devices are currently used in the fields of telecommunications and medicine and in

## Component Orientation and Polarity

Component polarity indicates a part's positive and negative terminal. It is essential for an error-free PCB assembly.



## Laser Diodes Explained: From Light Source to Everyday

Unlock the secrets of laser diodes! Explore how they work, their construction, different types, and surprising uses in everyday tech - from CD



## Laser diode

If the positive terminal of the battery is connected to the p-type semiconductor and the negative terminal of the battery is connected to the n-type semiconductor, the diode is said to be forward biased.



PRODUCTION NAME	Frequency conversion control cabinet
PROTECTION DEGREE	IP55
VOLTAGE	220/380V
SIZE	customized as required
MOUNTING WAY	Floor-standing
APPLICATION	Indoor and outdoor



## Solar Panel Positive and Negative (Diode + Voltmeter)

How to Determine the Positive and Negative Terminals of a Solar Panel Look at the Diode Do you have a solar panel without polarity labels? In that

## Diode Polarity Symbol, Diagram & Identify Method

Every diode has two terminals: the anode (positive side) and the cathode (negative side). When the anode is connected to a higher voltage than



## How to Figure Out the Plus and Minus Terminals of a

How can you figure out the proper polarity, which terminal or wire is plus and which is minus? Here's a couple of easy tips than can even be done

Measure voltage at diode for either direction. In one direction, you will measure the forward voltage of the diode and the other, the voltage source voltage since the diode blocks the



### Diode Polarity: Understanding and Identifying Diode Direction in Circuits

Learn everything about diode polarity, including diode direction, diode anode vs cathode, diode markings, polarity symbols, and practical tips for identifying diode positive and negative sides

### Laser diode representation on circuit diagrams

The laser diode is a critical component in several modern technologies, such as telecommunications, laser printers, barcode scanners, and fiber optic



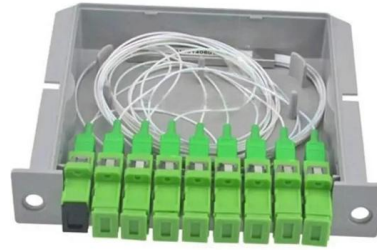
### How to know the positive and negative poles of diodes with a

The diode has two terminals, positive and negative. (As shown in Figure 1), the positive terminal A is called the anode and the negative terminal B is called the cathode.



## An Introduction to Laser Diodes

An Introduction to Laser Diodes Learn about the laser diode, including package types, applications, drive circuitry, and some laser diode specifications.



## Laser Diode: The Ultimate Beginner's Guide

This is the ultimate beginner's guide to the laser diode. Learn how lasers work and how you can use them in your own projects with this guide.

## Contact Us

---

For datasheets, pricing, or custom high-speed optical interconnect solutions, please visit:  
<https://syropy.com.pl>