

How to implement an FC interface





Overview

When configuring virtual FC interfaces, note the following guidelines and limitations:

- Each virtual FC interface can be bound to one of the following interfaces:
 - An Ethernet interface
 - An Ethernet PortChannel
 - A media access co.

Cisco Nexus 5000 Series switches support Fibre Channel over Ethernet (FCoE), which allows Fibre Channel and Ethernet traffic to be carried on the same physical Ethernet connection between the switch and the servers.



How to implement an FC interface



Configuring an FC or FCoE Interface

This document describes the configurations of Trill, FC and FCoE, DCB, and NLB Server Cluster Association.

Computer use tool

Computer use is a beta feature that enables Claude to interact with desktop environments. This tool provides: Screenshot capture: See what's

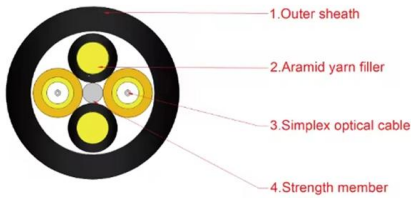


How to use IDisposable in ASP Core

This article talks about the many ways you can dispose of objects that implement the IDisposable interface in ASP Core 6. To work with the code

Getting Started With Function (FC) Programming in TIA

What is an FC in TIA Portal? An FC (Function) is a reusable, stateless block of logic in TIA Portal. It has no internal memory (unlike FBs) and must

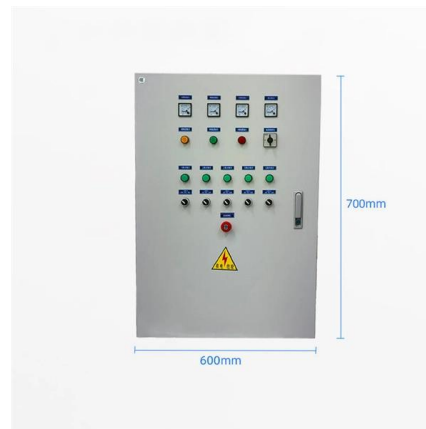


Top Yield Farming Tools & Platforms in 2026 , DeFi Guide

Discover the best yield farming tools, platforms, and strategies in 2026 to maximize DeFi rewards and minimize risk.

"Virtual filesystem" means two different things depending on who you

Leonie (@helloiamleonie). 100 likes 4 replies.
"Virtual filesystem" means two different things depending on who you ask. In operating systems: a layer that lets every program use the same



How to Implement a Custom POS Component in Odoo 19

In Odoo 19, implementing a custom POS component does not always require creating a brand-new OWL component from scratch. In many real-world scenarios, Odoo encourages





Blogs recent news , Game Developer

Explore the latest news and expert commentary on Blogs, brought to you by the editors of Game Developer



Assigning Interfaces to a Fibre Channel Fabric , Junos OS , Juniper

To assign core-facing native FC interfaces and a server-facing FCoE VLAN interface to an FC fabric, configure a fabric and then specify the interfaces:



Example for Configuring an FCF (FC Interfaces)

This document describes the configurations of Trill, FC and FCoE, DCB, and NLB Server Cluster Association.



Hardware Archives , TechRepublic

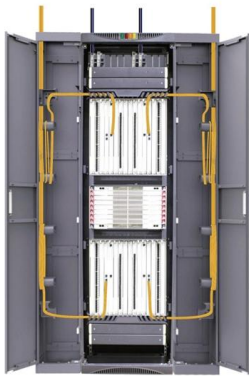
Stay current with the components, peripherals and physical parts that constitute your IT department.





GitHub Copilot cloud agent

Learn how to interact with the GitHub Copilot cloud agent in VS Code to autonomously implement features and fix bugs in the background.



7 New Rules of AI in UX Design for 2026 , Millipixels

7 New Rules of AI in UX Design for Human AI Collaboration in 2026 [+How to Implement from Day One] Discover how AI in UX design is transforming human AI collaboration in 2026. Learn

directory-list-2.4.txt/directory-list-2.4.txt at main

Customer stories Events & webinars Ebooks & reports Business insights GitHub Skills



4 Useful Tips to Secure Your PhpMyAdmin Login Interface

PhpMyAdmin remains one of the most popular MySQL/MariaDB administration tools, providing a convenient web-based interface to manage databases. Unfortunately, its widespread use makes it a



Understanding Interfaces on an FCoE-FC Gateway , Junos OS

By default, all of the gateway interfaces are Ethernet interfaces, so you must explicitly configure the interfaces that you want to use as FC interfaces.



Implement an Interface with Generic Methods

I'm trying to implement a generic interface with a class. When I implement the interface I think something isn't working right because Visual Studio continually produces errors saying that I'm

Why implement interface explicitly?

So, what exactly is a good use case for implementing an interface explicitly? Is it only so that people using the class don't have to look at all those methods/properties in intellisense?



Example: Setting Up Fibre Channel and FCoE VLAN Interfaces in an

The gateway FC fabric creates the path between the FCoE devices and the SAN. This example describes how to configure the interfaces, VLAN, and FC fabric to connect FCoE devices to the FC

Hier sollte eine Beschreibung angezeigt werden, diese Seite lässt dies jedoch nicht zu.

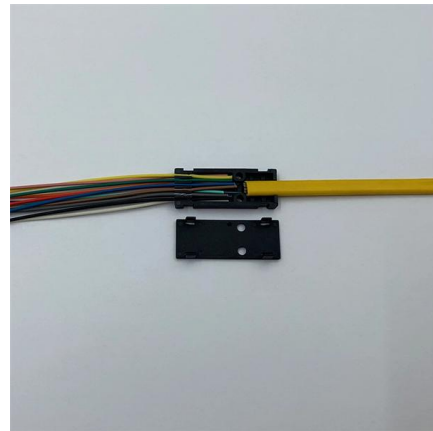


Remote Method Invocation in Java

Step 2: Implementing the remote interface The next step is to implement the remote interface. To implement the remote interface, the class

Create an FC interface

An FC port is the physical port of an FC adapter on a cluster node that can be connected to an FC network.



Support

An FC interface or FC aggregate interface exchanges messages with the peer interface in the access VSAN to perform VSAN mode negotiation. Therefore, you must map the access VSAN to a VLAN.



Smashing Magazine -- For Web Designers And Developers

They can become serious accessibility barriers that interrupt essential online tasks, especially for people with disabilities. Here is how to implement thoughtful session management that



Contact Us

For datasheets, pricing, or custom high-speed optical interconnect solutions, please visit:
<https://syropy.com.pl>