

How to turn off the optical port on an H3C switch





How to turn off the optical port on an H3C switch



H3C S9500 SERIES SWITCH COMMAND MANUAL

View and Download H3C S9500 Series command manual online. Routing Switches. S9500 Series switch pdf manual download.

Free Markdown to HTML Converter

Convert your markdown to HTML in one easy step - for free!



H3C S9827 SERIES INSTRUCTIONS MANUAL Pdf Download

For more information about the power supply status LED, see H3C S9827 & S9857 Switch Series Hardware Information and Specifications. Solution To resolve the issue: Verify that the power cord is



Support

| Optical port (including Combo optical port) does not support VCT (virtual-cable-test) function. | Combo electrical port supports VCT function only when it is in UP condition (using undo shutdown



H3C

Hier sollte eine Beschreibung angezeigt werden, diese Seite lässt dies jedoch nicht zu.



H3C S5130-HI switch Command Reference

Below you will find brief information for switch S5130-HI. This document provides a detailed reference to the commands available for configuring and managing the S5130-HI series of switches.



PRODUCTION NAME	Frequency conversion control cabinet
PROTECTION DEGREE	IP55
VOLTAGE	220/380V
SIZE	customized as required
MOUNTING WAY	Floor-standing
APPLICATION	Indoor and outdoor

H3C S7500 SERIES SWITCH COMMAND MANUAL , ManualsLib

Command Manual - PoE H3C S7500 Series Ethernet Switches Chapter 1 PoE Configuration Commands By default, the PoE priority of a port is low. Note that this command is used together with



unsupervised_topic_modeling/topics/en/17/100/100/topics at

Contribute to [annontopicmodel/unsupervised_topic_modeling](#) development by creating an account on GitHub.



ITPro Today, Network Computing, IoT World Today combine

ITPro Today, Network Computing and IoT World Today have combined with TechTarget . The page you are looking for may no longer exist.

Mpango wa Kuboresha Mfumo wa Kuanzisha Upya wa Cisco Nexus

Panga uboreshaji wa boot baridi ya Cisco Nexus 7710 vPC yenye mpango wa vitendo unaofunika uboreshaji wa N77-SUP3E, udhibiti wa hatari ya boot baridi ya Nexus 7700 na utangamano wa



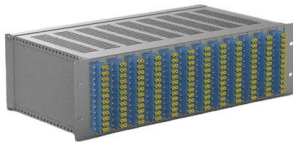
Basic CLI Commands on H3C Switch

Learn how to create users, VLANs, enable Telnet and SSH, configure Spanning Tree Protocol, enable DHCP snooping, define trunk ports, and create access ports on



How To Read Optical Module Information On H3C Switches

The following uses the Moduletek QSFP-40G-LR4 module connected to an H3C S6820 switch as an example to introduce how to read information of the connected optical module on an H3C switch.



H3C Switch Command Mastery: Streamlined

This article provides a hands-on guide to 50+ essential H3C switch commands, revealing hidden shortcuts and best practices derived from real-world

Press corner , European Commission

Find highlights, press releases, and speeches from the European Commission in one place.



H3C Devices CLI Reference

For example, the info-center enable command enables the information center. The undo info-center enable command disables the information center.

H3C Devices CLI Reference



Figure 2 Identifying the communications port
Open the terminal software on the PC to create a serial port terminal, as shown in Figure 3. Figure 3 Creating a serial port terminal As shown in Figure 4,



H3C S5830 Switch Series Configuration Examples

The authentication port (UDP) used by RADIUS servers is 1812 according to standard RADIUS protocols. However, the port (UDP) is set to 1645 on an H3C device that functions as the

119444 die 110023 und 108646 der 61406 in
39759 von 37276 zu 36337 das 31769 den
30981 fÃ¼r 29484 ist 26923 mit 24596 im
24129 auf 24121 des 23440 nicht 23371 eine
22483 auch 21975 sich



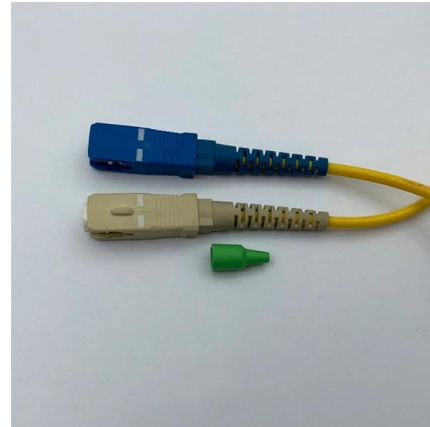
How to Master H3C Device Switch Commands: A

Ready to optimize your network management? Explore our comprehensive guide to H3C device switch commands. Upgrade your skills and



H3C Transceiver Modules User Guide

QSFP+ port to four 10G SFP+ ports. The QSFP+ optical transceiver module and SFP+ optical transceiver modules to be connected must be the same in specifications, including

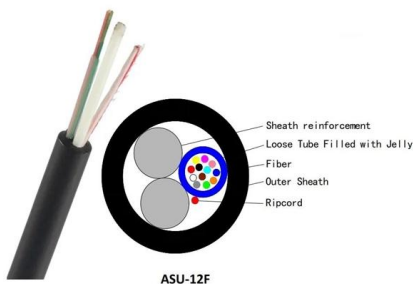


How To Turn Off Alarms For Third-Party Modules On H3C Switches

By default, a large number of alarm messages will be generated if the module is verified as non-H3C original. H3C provides CLI commands to suppress these optical module alarm messages. This guide

Business Design News & Trends

Find the latest Design news from Fast company. See related business and technology articles, photos, slideshows and videos.



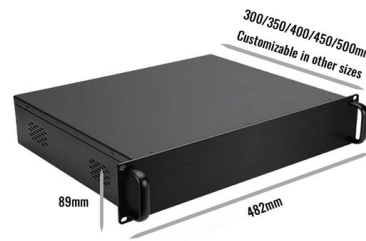
Support

Use the loopback-detection enable command to enable the loopback detection feature on ports to detect whether external loopback occurs on a port. Use the undo loopback-detection enable

How to disable the SFP module on H3C vswitches, routers, and other



Solve this problem: To solve this problem, it will be gradually solved on the new optical module, R2603P06 and later versions can solve this problem. If the version is not upgraded, run the following



Networking Solutions: Discover Cloud Services

We provide networking solutions to power your business. Our flexible and scalable cloud networking services help optimize your network infrastructure.

H3C Switch Command Mastery: Streamlined

In today's fast-paced network environments, H3C switches form the backbone of enterprise connectivity. While many administrators rely on GUI configurations,



Support

Use the display port display transceiver-information interface command to display information about a specified optical port. This command will display the following information about





How To Turn Off Alarms For Third-Party Modules On H3C Switches

When a third-party optical module is installed on an H3C switch, the module can normally link up, but port logs will display alarm messages indicating an uncertified non-H3C module.



Contact Us

For datasheets, pricing, or custom high-speed optical interconnect solutions, please visit:
<https://syropy.com.pl>