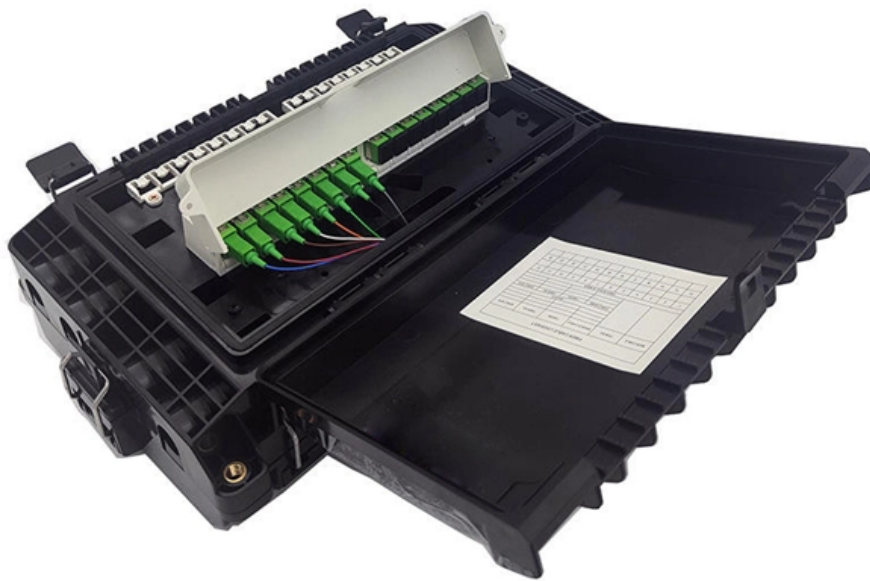


Huawei Aggregation Switch Ports





Huawei Aggregation Switch Ports



Huawei Ethernet Switches

Router-switch offers huawei CloudEngine, Campus and smb ethernet switches, provide high-availability, high-performance networking for large-scale data centers, ISPs, and enterprise IT networks.

Huawei

We're sorry but web site doesn't work properly without JavaScript enabled. Please enable it to continue. Loading



Link Aggregation

S2700, S3700, S5700, and S6700 Series Switches Product Use Precautions This document provides the use precautions of the product, including licenses, software versions, feature

Why Invest in a Huawei Aggregation Switch? Is Your Network Ready

The Huawei aggregation switch supports vertical and horizontal scaling, letting businesses add ports, upgrade software, or stack units as needs evolve. A startup might deploy



Case 2: Link Aggregation in LACP Mode

This document provides typical configuration examples for interoperation between Huawei switches and mainstream IP phones, firewalls, routers, Microsoft NLB servers, multi-NIC servers,



Configuring Aggregation and Access Switches to Be Managed by the

In this way, when configuring aggregation and access switches to be managed by the controller, you can configure the core switch as the management subnet gateway of the aggregation and access



Huawei 40G Switch Guide: How to Choose the Right Model

A practical, no-fluff guide to selecting a Huawei 40G switch--covering real-world use cases, key specs to compare, cost trade-offs, and when you *don't* need 40G at all.



Huawei 8 port switches

Discover Huawei 8x 8-port switches with high-speed connectivity and advanced network management for seamless business performance.



Configuring Link Aggregation in Manual Mode

S5700 and S6700 V200R024C10 Configuration Guide - Ethernet Switching This document describes the configuration of Ethernet services, including configuring MAC address table, link aggregation,

All Products and Solutions

Directory of Huawei enterprise IT infrastructure products, solutions, and services.



network-switch Huawei CloudEngine S5731-S24T4X 24-Port Data Switch

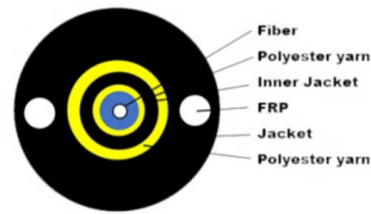
Buy Huawei 24GE data ports and 4 SFP+ uplinks. Non-PoE Layer 3 switch with iStack, SVF, and telemetry. Ideal for enterprise access, aggregation and data center.





How to Configure Link Aggregation on Huawei S5700 Switches?

As shown in Figure 1, configure an LACP mode link aggregation group on two Switch devices to improve the bandwidth and reliability between the two devices, with the following requirements:
The two



How to configure Huawei switch layer 3 link aggregation?

How to configure three-layer link aggregation through the command line to improve bandwidth and high link availability. Let's take a look at the detailed tutorial.

Link Aggregation and Load Balancing

This insures you don't strand the downstream switch. *Catalyst 9300-M and MS390 switches will disable a port (for 30 seconds) if it detects a regular trunk port on the other end of a



Link Aggregation Configuration

This chapter describes how to configure link aggregation. Link aggregation bundles multiple Ethernet links into a logical link to increase bandwidth, improve reliability, and load balance traffic.



Standalone AC Solution: Aggregation Switches Function as Gateways

Core switches set up a CSS that functions as the core of the entire campus network to implement high network reliability and forwarding of a large amount of data. Aggregation switches set up stacks to

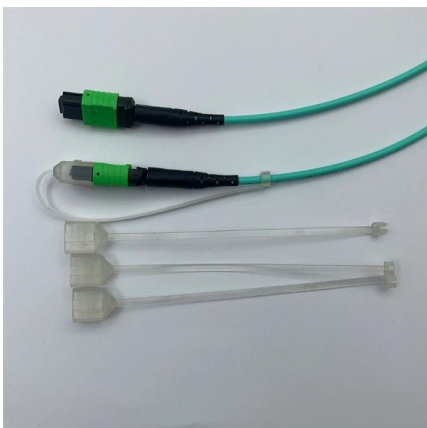


Huawei S6720S-26Q-EI-24S-AC: High-Density 10GbE and 40GbE Switching

The Huawei S6720S-26Q-EI-24S-AC network switch bundle represents a cornerstone for modern high-bandwidth enterprise environments, offering a robust blend of 24 10-Gigabit SFP+ ports

Learn how to configure Manual Link Aggregation on Huawei Switches

Huawei E-Trunk , Understanding MLAG (Multi-Chassis Link Aggregation) How to configure Stacking in Huawei Switches , What is Stacking , Stack Switches



Link Aggregation Configuration

S1720, S2700, S5700, and S6720 V200R011C10 Configuration Guide - Ethernet Switching This document describes the configuration of Ethernet services, including configuring link aggregation,



Standalone AC Solution: Aggregation Switches Function as Gateways

Aggregation switches set up stacks to implement device-level backup and increase the interface density and forwarding bandwidth. A standalone AC is deployed in off-path mode. It centrally manages APs



Huawei routers Switching Basics

Huawei Getting Started with the Basics of IP video series are entry-level materials that help you learn data communication knowledge. This video combines the

Link Aggregation Configuration

Example for Configuring Link Aggregation in Manual Mode When Switches Are Directly Connected Overview Ethernet link aggregation increases link bandwidth by bundling multiple physical links to



Aggregation Switch: Increasing the Priority of Special Traffic

Aggregation Switch: Increasing the Priority of Special Traffic Networking Requirements Core switches set up a CSS that functions as the core of the entire campus network to implement high network



Configuring Aggregation and Access Switches to Be Managed by the

A large number of aggregation and access switches need to be deployed on a large or midsize non-virtualized campus network. Therefore, during the initial batch deployment of



01-03 LINK AGGREGATION CONFIGURATION

Ethernet link aggregation, also called Eth-Trunk, bundles multiple physical links into a logical link to increase link bandwidth, without having to upgrade hardware. Link aggregation provides link backup

Link Aggregation

Ethernet link aggregation is a basic feature of a switch and is not under license control. For details about software mappings, visit Hardware Query Tool and search for the desired product model.



Example for Configuring Link Aggregation in LACP Mode

S1720, S2700, S5700, and S6720 V200R011C10 Configuration Guide - Ethernet Switching This document describes the configuration of Ethernet services, including configuring link aggregation,



Huawei Link Aggregation Configuration , Huawei LAG

In this lesson, we will talk about Huawei Link Aggregation Configuration. We will show Huawei Link Aggregation Configuration with two examples. One of these



Contact Us

For datasheets, pricing, or custom high-speed optical interconnect solutions, please visit:
<https://syropy.com.pl>