

Huawei industrial switch optical port lit





Huawei industrial switch optical port lit



CloudEngine S5731I-L Series Industrial Switches (DIN)

CloudEngine S5731I-L series industrial switches (DIN rail-mounted) are Huawei's next-generation industrial switches. They support flexible all-gigabit access and

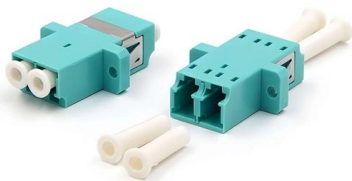
Huawei S9300 Switch Product Brochures

S9300 switches can set up a clustering switch system (CSS) through cluster cards or service ports. The CSS provides industry-leading 320 Gbps inter-chassis bandwidth due to Huawei's novel approach of



Optical Module Solutions for Huawei S5700/S5720 Series Switches

When using switches, we may encounter many confusions, such as what types of optical modules are needed for different models of Huawei switches, and how to resolve issues encountered



Displaying Optical Module Information

The system may fail to obtain information about non-Huawei-certified switch optical modules or obtain incorrect information. You are advised to use Huawei-certified switch optical modules. When a non



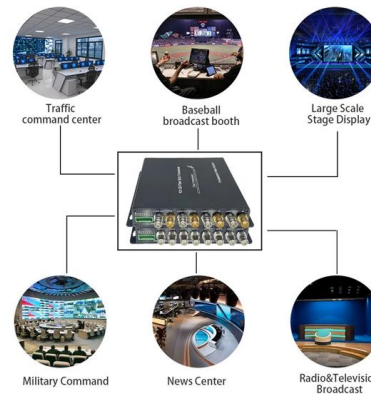
S5700-24TP-SI-DC

If the optical port has an optical module installed and the electrical port has an Ethernet cable connected, the optical port is used for data switching after the switch restarts. You can configure a



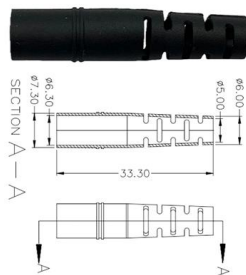
Intelligent OptiX Network , OptiX , All-Optical Networking

Huawei's intelligent OptiX network strategy aims to build intelligent, simplified, ultra-broadband, and ubiquitous next generation all-optical networks.



ES5MFMT00001

Outside the terminal box: Connect the LC optical fiber pigtail to an optical port of the S5732-H hybrid optical-electrical switch and connect the power cable of the hybrid cable to an electrical port of the





Huawei S5731-S48T4X 48-Port Gigabit Network Switch

High-performance Huawei S5731-S48T4X switch with 48 Gigabit ports, 4 SFP+ slots, 336Gbps capacity, and robust surge protection. Ideal for enterprise networks.

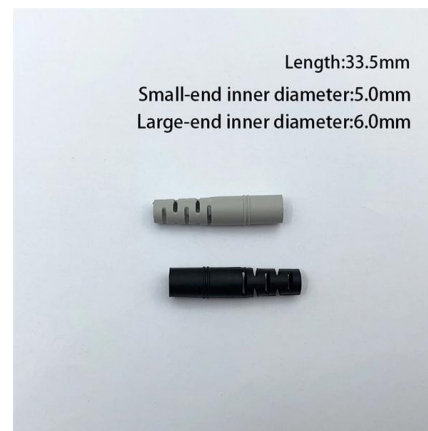


Huawei Switches Viewing Optical Port Receiving and Sending

Use the command display transceiver to view the optical module information of all optical ports, and use the command display transceiver interface interface-type interface-number to view the

FAQs About Optical Modules

The switch must have optical modules certified for Huawei switches installed. Optical modules that are not certified for Huawei switches cannot ensure transmission reliability and may affect service



ES5D21G16S00 (16-Port GE SFP Front Optical Interface Card)

Card Overview The ES5D21G16S00 provides sixteen GE SFP optical ports for data access and line-rate switching. The ES5D21G16S00 can be installed in the front card slot of the switch models listed in



S5720-16X-PWH-LI-AC

In this mode, the switch does not provide PoE power supply and works in low-power state. All ports of the switch, except GE0/0/13 and GE0/0/14, are shut down in the standby mode.



CloudEngine S5732-H Series Hybrid Optical-Electrical Switches

CloudEngine S5732-H Series Hybrid Optical-Electrical Switches CloudEngine S5732-H series hybrid optical-electrical switches are brand-new 10GE access switch that provides 24-port (optical) + 24

Optical Modules for Huawei S Series Switches

For details about the optical modules supported by optical ports on switches, see "Appearance and Structure" of a specific switch model in the Hardware Description.



How To Read Optical Module Information On Huawei Switches

The following uses the Moduletek SFP-10G-LR module connected to a Huawei S6700 switch as an example to introduce how to read information of the connected optical module on a Huawei switch.





Checking the Optical Module Type

When certifying an optical module, Huawei switches comprehensively verify optical module functions to ensure the optical module quality. The functions include the installation and removal, transmit and

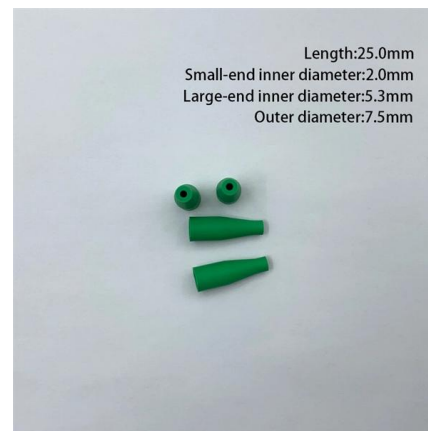


Empowering Enterprise Connectivity: An In-Depth Look at the Huawei

Within the fast-paced world of industrial networking, the S5735-L48P4X-A Huawei switch provides a "simplified" yet powerful architecture designed to meet the rigorous demands of 48-port

CloudEngine S5731I-L Series Industrial Switches (DIN)

The CloudEngine S5731I-L series supports an industrial-grade operating temperature range and can work in the cabinet in harsh outdoor environment.



ES5MFMT00004

If a 48-port hybrid optical-electrical switch is used, two terminal boxes are required. For a 48-port S5735-S-V2 hybrid optical-electrical switch, the cables of the first 24 ports and the cables of the last 24 ports



Checking the Working Modes

Procedure Run the display transceiver interface interface-type interface-number verbose command to view the optical module parameter settings. All the parameters of each optical module

More durable and robust

The outer layer is made of environmentally friendly PVC, which is soft and elastic. It can be stretched without damage , so you can use it with confidence.

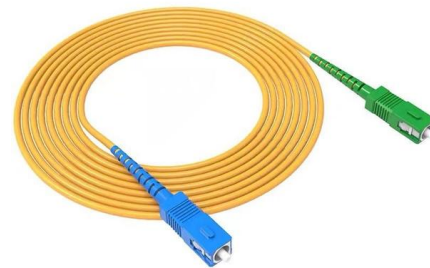


Checking the Interface Status and Configuration Parameters

If a message is displayed, indicating that the optical module is not in position, remove and then properly insert the optical module. If the auto-negotiation mode is used but the interface cannot go Up, set the

Network Switches , Huawei Enterprise

Huawei campus switches are ideal for building future-proof campus networks with simplified management, high reliability, and service intelligence, across industries



What Is an All-Optical Ethernet Switch?

All-optical Ethernet switches are a type of switch that provides optical uplink and downlink ports, making them an ideal choice for building an all-optical campus network. They can function as



**CloudEngine S5736-S Series Switches ,
Huawei Enterprise**

CloudEngine S5736-S Series Switches are next generation standard all-optical GE switches, with 48 downlink optical ports and four 10 GE uplink ports.



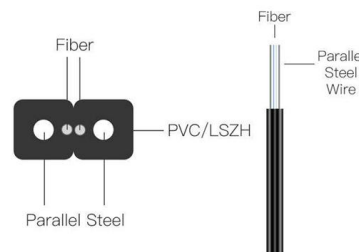
OptiXstar T823E-T Industrial IoT edge computing ONU

Huawei OptiXstar T823E-T is an industrial-grade IoT edge computing gateway for the Huawei Industrial Optical Network solution. It provides two XGS-PON upstream ports on the network side and eight GE



In Stock Huawei Industrial Switch Layer 2 Switch, SNMP Management

About huawei industrial switch Types of Huawei Industrial Switches Huawei's comprehensive range of industrial Ethernet switches is engineered to deliver robust, secure, and



Huawei CloudEngine S5535-S-V2 Series Hybrid Optical-Electrical Switches

Huawei CloudEngine S5535-S-V2 Series Hybrid Optical-Electrical Switches Brochure Huawei CloudEngine S5535-S-V2 series hybrid optical-electrical switches are standard gigabit Ethernet



WebiTelecomms Cabling



S5720-16X-PWH-LI-AC

Figure 4-90 shows the power supply mode of the power module in the S5720-16X-PWH-LI-AC switch. The power module receives AC power from an external power source and provides two outputs: 12 V



Contact Us

For datasheets, pricing, or custom high-speed optical interconnect solutions, please visit:
<https://syropy.com.pl>