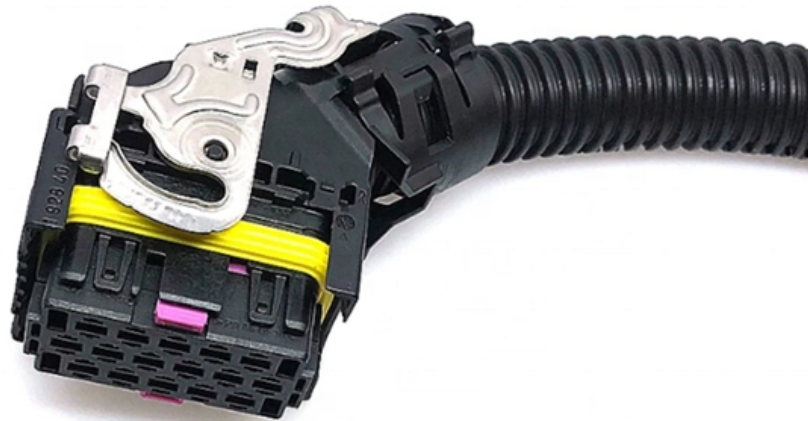


Huijue Gigabit Optical Port Aggregation Switch



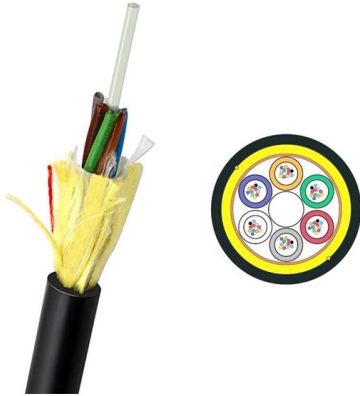


Overview

Huawei's S5731 switch family, also branded as CloudEngine S5731, delivers a wide-ranging lineup of gigabit switches tailored for campus access, aggregation, and even metro-area access. The RG-S5750-H Series provides hardware support for IPv4/IPv6 multilayer switching at line rates, supports distinction and processing of IPv4 and IPv6 packets by hardware, and provides flexible IPv6 network communication schemes for network implementation planning or maintaining the present network. Breaking down into three series— S5731-L (Light), S5731-H (High-end), and S5731-S (Standard) —the series supports. The Xingmai Passive Ethernet Network (PEN) is an all-optical campus network solution based on the passive technology. CloudEngine S5736-S Series Switches are next generation standard all-optical GE switches, with 48 downlink optical ports and four 10 GE uplink ports.



Huijue Gigabit Optical Port Aggregation Switch

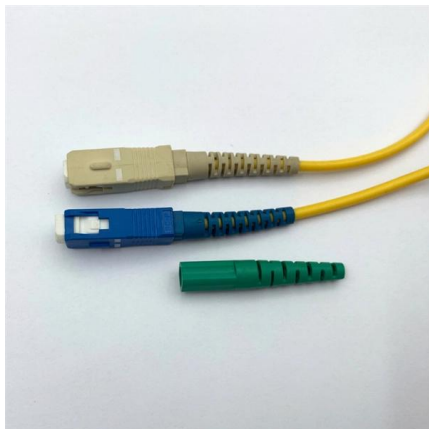
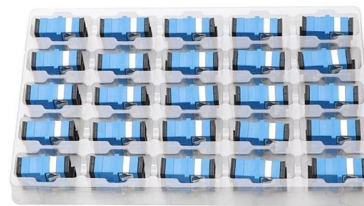


48 10GE+2 40GE ports+4 100G ports Aggregation

The BD-S5800 Series adopts our most advanced hardware architecture designs. BD-S5800 Series (1U height) supports up to 2.56Tbps switching capacity and 48

Gigabit 16-port L2+ managed Ethernet switch

L2+ managed Ethernet fiber switch with 8*10/100/1000M RJ45 ports and 8*100/1000M uplink SFP fiber ports. It built-in power supply and 1U/19" cabinet



RG-SF2920-16GT2SFP-P 16-Port GE All-Optical PoE Switch, 2 x Gigabit

RG-SF2920-16GT2SFP-P 16-Port GE All-Optical PoE Switch, 2 x Gigabit Uplink Optical Ports
Various port combinations, rate increase, installation in a concealed telecommunication box, recommended

24-Port GE Optical Layer 3 Enterprise-Class Core or Aggregation Switch

Layer 3 GE Core & Aggregation Switch
S5760C-24SFP/8GT8XS-X Aggregation switch for small and medium-sized campus networks, with eight 10G uplink optical ports for high-speed data



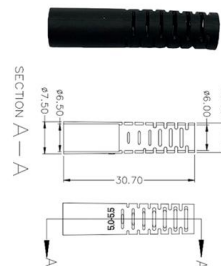


CloudEngine S5731-S Series Switches , Huawei Enterprise

The CloudEngine S5731-S series multi-GE switches are next-generation gigabit access switches that offer multi-GE (GE/2.5GE/10GE) electrical downlink ports

PEN Passive Aggregation Module

This section describes the hardware of the PEN passive aggregation module. The PEN passive aggregation module, also known as passive optical splitter or passive multiplexer, splits and



24-port Gigabit 4 optical ports Gigabit Layer 3 managed switch static

WS3028GM Layer 3 Gigabit Managed Switch supports 24 Gigabit Ethernet ports, 4 Gigabit SFP optical ports and 1 management port. The switch provides advanced network management features:

Campus Switches RG-S5760C-48GT4XS-HP-X 48-Port GE Electrical

Layer 3 GE Core & Aggregation Switch RG-S5760C-48GT4XS-HP-X Aggregation switch for small and medium-sized campus networks, with 4 x 1GE/10GE SFP+ uplink ports for data transmission; 48 x





10G uplink 28-port L2+ managed Ethernet switch

L2+ managed Ethernet aggregation /core fiber switch with 24*10/100/1000M RJ45 ports and 4*1/10G uplink SFP+ fiber ports. It built-in 60W power supply and

Switch Hi-Capacity Aggregation

A 32-port, Layer 3 switch made for high-capacity 10G SFP+ and 25G SFP28 connections.

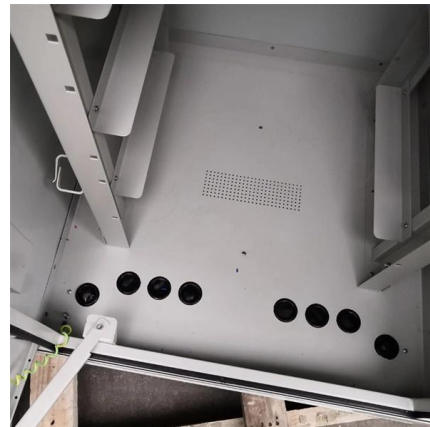


Ruijie RG-S5760C-24SFP/8GT8XS-X 24-Port GE

Ruijie RG-S5760C-24SFP/8GT8XS-X 24-Port GE Optical Layer 3 Enterprise-Class Core or Aggregation Switch (with Eight Combo Ports), Eight 10G Uplink Ports

CloudEngine S5731-S Series Switches , Huawei Enterprise

CloudEngine S5731-S series multi-GE switches are gigabit access switches that offer multi-GE downlink ports and 10GE/40GE optical uplink ports. Learn more.





Switch Aggregation

An 8-port, Layer 2 switch made for 10G SFP+ connections.

Campus Switches RG-S5750C-28SFP4XS-H, Enterprise-Class

Exceptional Performance and Scalability. The RG-S5750-H Series offers fixed 4 10G fiber ports. Users can flexibly choose 10G fiber or copper ports in various quantities to meet their actual deployment



Switch Aggregation

Faster replacement and priority support, covered for 5 years. High-performance 10G SFP modules for optimal connectivity. An 8-port, Layer 2 switch made for 10G

Huawei S5731 Series: VXLAN Campus & PoE Gigabit

Huawei's S5731 switch family, also branded as CloudEngine S5731, delivers a wide-ranging lineup of gigabit switches tailored for campus access,





Campus Switches RG-S5760C-24SFP/8GT8XS-X 24-Port GE Optical

Aggregation switch for small and medium-sized campus networks, with 8 x 1GE/10GE SFP+ uplink ports for high-speed data transmission; 24 x 1GE SFP ports (including 8 x combo ports), providing high

Fiber-optic Aggregation Switch

Fiber-optic Aggregation Switch, Achieve greater efficiency and speed with Layer 3 managed switches equipped with 10G uplink. Perfect for demanding



CloudEngine S5732-H Series , Huawei Enterprise

CloudEngine S5732-H Series Hybrid Optical-Electrical Switch The CloudEngine S5732-H Series Hybrid Optical-Electrical Switch is a new generation of 10 GE

Campus Switches RG-S5750C-48GT4XS-H, Enterprise-Class Core/Aggregation

RG-S5750C-48GT4XS-H, Enterprise-Class Core/Aggregation Switch, 48 x GE Electrical Ports, Two Expansion Slots, 10GE Uplink Applied to the aggregation layer of large networks, the core of small





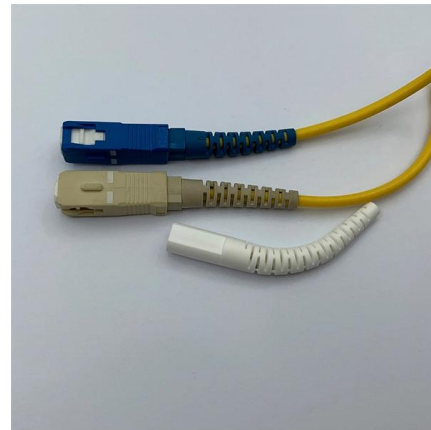
Campus Switches

Huawei S Series Switches fully accommodate metro core, aggregation, edge aggregation, and access networking requirements, and are capable of building an



24*Gigabit SFP 4*10G SFP+ 8*Gigabit Electrical/optical Combo 3

WS5834GXF 10 Gigabit uplink 24 Gigabit optical port managed switch, provides 24*10/100/1000 adaptive SFP ports, 4*10 Gb SFP+ ports, 8*10/100/1000 adaptive electrical/optical combo ports and



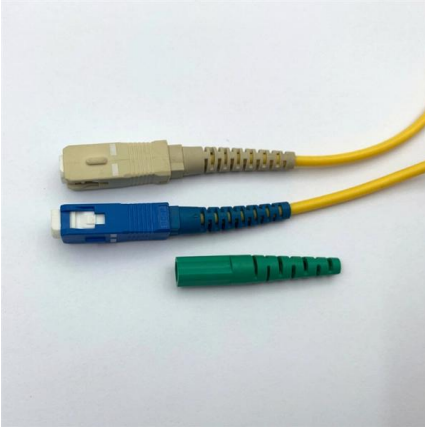
AXIS D8308 Fiber Aggregation Switch

Developed for long distance fiber installations. Equipped with eight SFP+ ports, two additional SFP28 ports and one RJ45 console port for configuration. With AXIS

Campus Switches RG-S5750C-48SFP4XS-H,

RG-S5750C-48SFP4XS-H, Enterprise-Class Core/Aggregation Switch, 48 x GE Optical Ports, Two Expansion Slots, 10GE Uplink Applied to the aggregation layer





Ruijie Campus Switches

Gigabit aggregation switch for small and medium-sized campus networks, with four/eight 10G uplink optical ports for high-speed data transmission; 24/48 x 10/100/1000BASE-T ports, providing high

EPCOM: RG-S5760C-24SFP-8GT8XS-X-RUIJIE

Layer 3 GE Core & Aggregation Switch
S5760C-24SFP/8GT8XS-X Aggregation switch for small and medium-sized campus networks, with eight 10G uplink optical ports for high-speed data



Application on a Large Enterprise Campus Network (Aggregation Layer)

As shown in the following figure, S5700 switches are deployed at the aggregation layer of a large enterprise campus network, enabling the network to be highly reliable, scalable, and easy-to-manage.

Transmission

Transmission Dahua offers both network and HDCVI PTZ cameras. PTZ cameras use pan, tilt, and zoom functionality to provide both wide-area coverage and great detail. Dahua offers both network





CloudEngine S5736-S Series Switches , Huawei Enterprise

Feature-rich with software-defined port speeds. CloudEngine S5736-S Series Switches are next generation standard all-optical GE switches, with 48 downlink optical ports and four 10 GE uplink ports.

EPCOM: RGS5760C48GT4XSX-RUIJIE

48-Port GE Electrical Layer 3 Enterprise-Class Core or Aggregation Switch, Four 10G Uplink Optical Ports



Contact Us

For datasheets, pricing, or custom high-speed optical interconnect solutions, please visit:
<https://syropy.com.pl>