

Installation of Level 3 Distribution Box in Somalia





Installation of Level 3 Distribution Box in Somalia

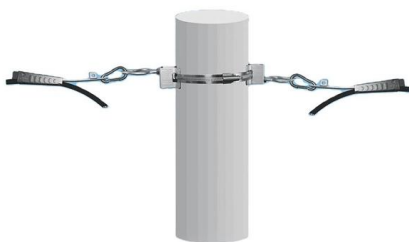


The difference between the first, second, and third levels of

Third level distribution box: refers to the final junction box of each electrical appliance, which can be movable and fixed. Remember that the leakage protection switch is the last one, and

Key Points Of Distribution Box Installation

3. Distribution box and switch box shall be installed in ventilated, dry and normal temperature places. It is strictly prohibited to install it in the gas, flue gas, steam, liquid and other harmful media with severe



Talking About The Installation Specification Of

The structure and simple circuit of the distribution box make the application of the distribution box more and more widely, also promote a variety of additional

EOI: Design, Supply, Installation, Testing, Commissioning and

World Vision Somalia invites Bidders to submit their expression of Interest for the Design, Supply, Installation, Testing, Commissioning and Validation of the Biosafety Level-III Laboratory



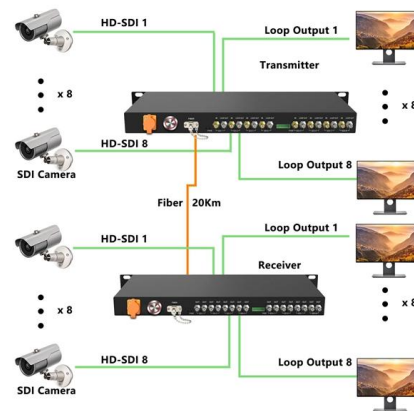
How to confirm whether the installation location of the

The electrical distribution box plays a vital role in the power system. It is responsible for distributing electricity to various circuits and equipment.



Detailed introduction of safety requirements for distribution box

Safety control requirements for distribution box:
1. The low-voltage power supply system at the construction site shall be equipped with a general distribution box, a distribution box and a



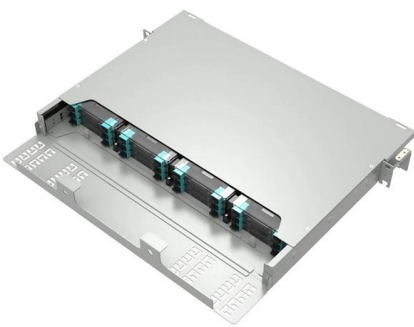
The installation requirements for the distribution box

Learn how to install a distribution box safely and correctly. Covers wiring, placement, standards, and expert tips for a compliant setup.



Distribution Box Installation: A Complete Guide to Safe

The distribution box, often referred to as a breaker box, fuse box, or electrical panel, is a critical component of any electrical system. It acts as the central hub for

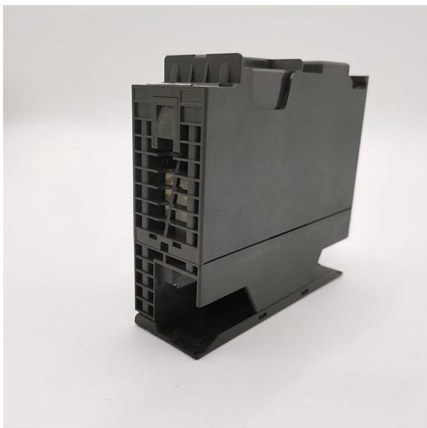


Analysis on the Installation of Assembled Distribution

There are many taboos and problematic practices in the installation of distribution boards and cabinets that must be noted. Especially in certain areas,

Electrical Power Distribution Box: A General Installation

A Electrical Power Distribution Box is a critical hub in any electrical installation, organizing and protecting power for multiple circuits. This article



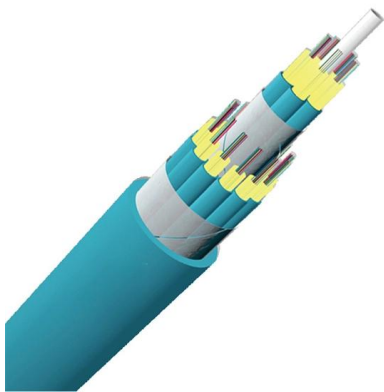
Cautions and Requirements for Installation of

8. After installation, the residue in the distribution box should be cleaned up. When the distribution box is installed and constructed, some safety operation items



How to Improve the Installation Quality of Distribution Boxes

The construction quality of distribution boxes directly impacts the overall quality level of a project. As the construction unit responsible for electrical equipment installation, it is essential to carry out the



Understanding Distribution Boxes: A Comprehensive Guide

The right distribution box depends on the installation environment, protection level, load requirements, and application type. By understanding the

The installation requirements for the distribution box

A distribution box is the heart of any electrical system. It takes the incoming power and safely distributes it to different circuits throughout your



EOI: Design, Supply, Installation, Testing, Commissioning and

World Vision Somalia invites Bidders to submit their expression of Interest for the Design, Supply, Installation, Testing, Commissioning and Validation of the Biosafety Level-III Laboratory in



Key Points Of Installation And Collocation Of Distribution Box In

If they are combined in the same distribution box, power and lighting lines should be set separately. 7. The wire inlets and outlets in the distribution box and switch box shall be set at the lower bottom of



Low-voltage distribution networks

In European countries the standard 3-phase 4-wire distribution voltage level is 230/400 V. Many countries are currently converting their LV systems to the latest IEC standard of 230/400 V

The Meaning and Function of Primary, Secondary, and Tertiary

Forms part of the three-level protection system. Features inner and outer doors, powder-coated exteriors, and rainproof tops for outdoor use. Tertiary Distribution Box: The system includes a



Provision of Electrical and Power distribution works in various

The United Nations Support Office for AMISOM (UNSOA) requires contractual services for the provision of electrical and power distribution works in Somalia. The locations for specified electrical works are



Safety requirements of distribution box

The distribution box has the characteristics of small size, simple installation, special technical performance, fixed location, unique configuration function, not limited by



Electric Panel Installation Method Statement

METHOD STATEMENT FOR Electric panel and distribution box installation and termination - Free download as PDF File (.pdf), Text File (.txt) or read online for

How to Improve the Installation Quality of Distribution Boxes

Learn key methods to enhance distribution box installation quality, including location, height, wiring, and safety compliance.



How to determine the size, installation method and

6) The electrical appliances in the distribution box shall be first installed on the non-metal or wood insulation electrical appliance mounting plate, and then fastened in



Distribution switchboards

Distribution switchboards, including the Main LV Switchboard (MLVS), are critical to the dependability of an electrical installation. They must comply with well-defined standards governing



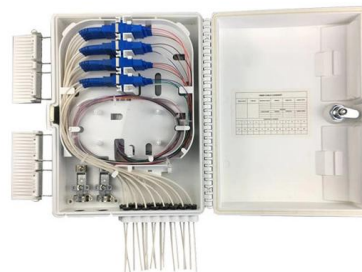
What is Level 1, Level 2 and Level 3 distribution box

Three level protection refers to: on-site construction of electricity must be done in the general distribution box, distribution box and switch box to install leakage protection.

Provision of Electrical and Power distribution works in various

The required work include the following:

- o Supply and installation of ATS panels, main and sub distribution boards.
- o Installation of generators including grounding, exhaust piping and fuel piping.



Installation process of distribution box

2. The wall mounted distribution box can be fixed on the wall with expansion bolts, but the dovetail bolts shall be embedded in the hollow brick or block wall or fixed



Key Points Of Distribution Box Installation

The distribution box and switch box shall be made of iron plate or high-quality insulating material, and the thickness of iron plate shall be greater than 1.5mm; the electrical appliances in the distribution



Contact Us

For datasheets, pricing, or custom high-speed optical interconnect solutions, please visit:
<https://syropy.com.pl>