

Iraq Certified Erbium-Doped Fiber Amplifier 1 6T





Iraq Certified Erbium-Doped Fiber Amplifier 1 6T

A photonic integrated circuitâ based erbium-doped amplifier



Erbium-doped fiber amplifiers revolutionized long-haul optical communications and laser technology. Erbium ions could provide a basis for efficient optical amplification in photonic integrated circuits but

A global design of an erbium-doped fiber and an erbium-doped fiber

1. Introduction Over the past years, erbium-doped fiber amplifiers (EDFAs) have received great attention due to their characteristics of high gains, bandwidths, low noises and high efficiencies.



Erbium doped fibers , Exail

The amplification of optical transmission signals is enabled through our high efficiency erbium (Er) doped fibers. Our wide range of Er-doped optical fibers



A photonic integrated circuit-based erbium-doped amplifier

Erbium-doped fiber amplifiers revolutionized long-haul optical communications and laser technology. Erbium ions could provide a basis for



SPACE-BASED ERBIUM-DOPED FIBER AMPLIFIER

This paper describes Fibertek, Inc.'s progress in developing space-qualified Erbium-doped fiber amplifier (EDFA) transmitters for laser communications and ranging/topology, and CO



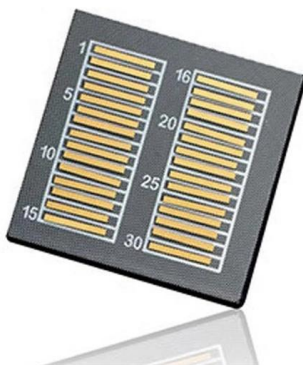
Erbium-Doped Fiber Amplifiers (EDFA) - Fosco Connect

Erbium-Doped Fiber Amplifiers (EDFA) An important class of lumped optical amplifiers makes use of rare-earth elements as a gain medium by doping the fiber



Erbium Doped Fibers , Rare Earth Doped Optical Fibers

F-EDF erbium doped fibers provide the basic building block to fiber optic amplifiers used in broadband optical networks in the 1550 nm transmission window. These erbium doped fibers deliver gain





A Photonic Integrated Circuit-Based Erbium-doped Waveguide Amplifier

The invention of erbium-doped fiber amplifiers (EDFAs) revolutionized long-haul fiber-based optical communications. Erbium amplifiers have a number of unique properties highly suitable for optical



Design and Analysis of Erbium Doped Fiber Amplifier for Optical

PDF , On May 1, 2019, Raya Majid Alsharfa published Design and Analysis of Erbium Doped Fiber Amplifier for Optical Communication Network , Find, read and cite all the research you need on

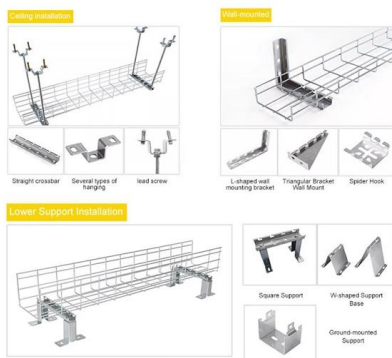


(PDF) Erbium-Doped Fiber Amplifier Review

Erbium doped fiber amplifier (EDFA) performance is dependent on several factors such as fiber length, pump power, Er³⁺ concentration. This paper



INSTALLATION METHOD



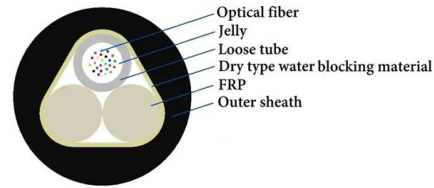
Erbium-Doped Fiber Amplifiers (EDFAs): Foundations

The combined beam passes through the erbium-doped fiber, where the signal is amplified through interaction with the excited erbium ions. The output



Terabit-class coherent communications enabled by an

Recently, an erbium doped waveguide amplifier based on ultra-low loss silicon nitride waveguides has demonstrated gain and output power levels

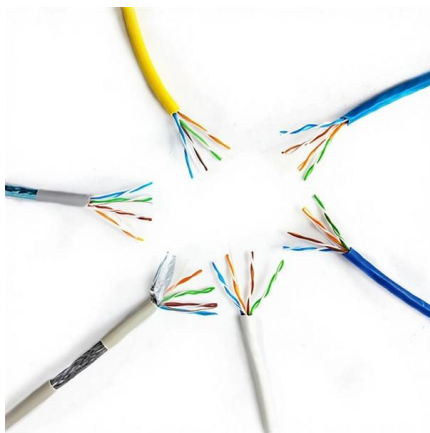


Erbium Doped Fiber Amplifier (EDFA) , Fibercore

The amplifier is based on erbium doped fiber, and can be incorporated directly into an optical network, avoiding the need to convert optical signals to electrical signals for amplification and re-launch.

Low-Noise, High-Gain Optical Amplification: The Technical Backbone

Deploying Fibercore's dual-band erbium-doped fiber in four remote amplifiers achieved: 30 dB total gain per amplifier, restoring video carriers to within 0.5 dB of original levels.



Customized Pre-Amplifier EDFA for DWDM Networks

The DWDM EDFA is a low-noise, gain-flattened C-band optical erbium doped fiber amplifier (EDFA) designed to extend the distance in dense wavelength-division multiplexing (DWDM) optical



First Demonstration of Erbium-Doped Waveguide Amplifier

Request PDF , First Demonstration of Erbium-Doped Waveguide Amplifier Enabled Multi-Tb/s (16x1.6T) Coherent Transmission , We demonstrate the first EDWA-enabled Terabit-class



Review of Erbium-doped fiber amplifier

In particular, the Erbium-doped fiber amplifier (EDFA) is one example of an optical fiber amplifier that is widely known for use in amplifying optical signals. The most significant points in any optical amplifier



Erbium-doped waveguide amplifier

An erbium-doped waveguide amplifier (or EDWA) is a type of an optical amplifier enhanced with erbium. It is a close relative of an EDFA, erbium-doped fiber amplifier, and in fact EDWA's basic operating



EDFA (Erbium Doped Fiber Amplifier) - Physics and

EDFA (Erbium-Doped Fiber Amplifier) is an optical device used to compensate optical signal attenuation caused by fibers and components, to increase optical





Gain Characteristics of Erbium Doped Fiber Amplifier

In this project we have cover the gain characteristics of Erbium Doped Fiber Amplifier. We have seen the variation of gain with respect to length of fiber



Amplification and noise properties of an erbium-doped

A multicore erbium-doped fiber (MC-EDF) amplifier for simultaneous amplification in the 7-cores has been developed, and the gain and noise

Erbium-doped Fiber Amplifiers - Buying Guide & Suppliers

This erbium-doped fiber amplifiers buying guide provides technical background, comparison of major types, selection criteria, and an overview of suppliers.



Erbium-Doped Fiber

Erbium doped fiber amplifier (EDFA) is defined as a crucial component in advanced wavelength division multiplexing (WDM) systems that provides optical gain over a wide wavelength range, typically



Erbium-Doped Fiber Amplifiers (EDFA)

Thorlabs' core-pumped erbium-doped fiber amplifiers (EDFAs) provide high small signal gains and output powers in a compact, turnkey benchtop package or a plug-in PXIe module with FC/APC (2.0



Photonics FIBERAMP-BT 17 EDFA - Erbium-Doped Fiber Amplifier

The Photonics FIBERAMP-BT 17 is an Erbium-Doped Fiber Amplifier (EDFA) designed to boost optical signal strength in fiber optic communication systems. This amplifier operates at 17 dB gain,

CW Fiber Amplifiers

IPG offers Ytterbium (1030-1070 nm) and Erbium (1535-1606 nm) continuous wave fiber amplifiers that can be matched to a user-supplied or IPG seed laser. IPG CW fiber amplifiers provide output power



Contact Us

For datasheets, pricing, or custom high-speed optical interconnect solutions, please visit:
<https://syropy.com.pl>