



**Syropy AI Connectivity**

# Ireland EDFA200G

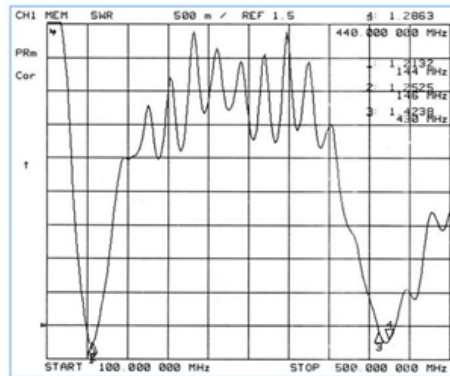
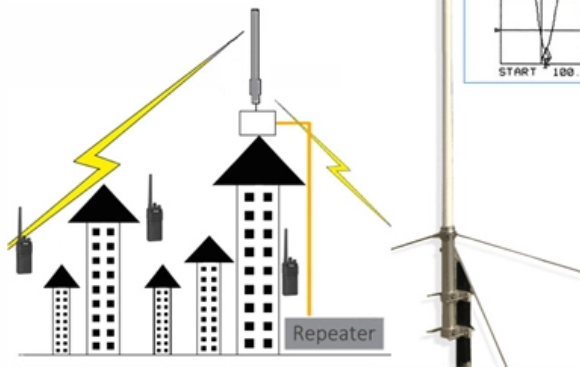
**Frequency: 144 MHz / 430 MHz**

**Band width: 3 MHz / 10 MHz**

**Gain: 6.0 dBi / 8.0dBi**

**Length: 250cm**

**Dual Band: 2m / 70cm**





## Ireland EDFA200G

---



### LATVIA EDFA200G Price, Distributor, Stock

LATVIA EDFA200G inventory, LATVIA EDFA200G price, LATVIA EDFA200G stock from Electronic Component Distributors. LATVIA EDFA200G buy now, LATVIA EDFA200G RFQ, LATVIA

### Travel Adaptor for Ireland , Electrical Safety First

Ireland travel adaptors You will need to consider what to pack, to ensure you can use your personal electrical appliances safely whilst abroad. This normally includes



### ERBIUM-DOPED FIBER AMPLIFIER

antiphotonics FEATURES The EDFA is a high-power Erbium-Doped Fiber Amplifier for optical signal amplification in C band. With three control modes: constant power, constant current and constant

### Travel Advice By Destination , Department of Foreign Affairs , Ireland.ie

Our travel advice helps you to make informed decisions when you're planning a trip overseas. Search for travel advice by destination.



### **Reiseadapter: Wird in Irland ein Reisestecker oder**

Ihr benötigt keinen Spannungswandler in Irland Reiseadapter kaufen Unabhängig davon, ob ihr einen Reiseadapter oder Spannungswandler benötigt, lohnt sich die



### **Ireland Power Plugs - Essential Guide for Travelers to**

Learn which adapters and converters you need to safely use your devices in Ireland power plugs. Essential tips on plug types and voltage.



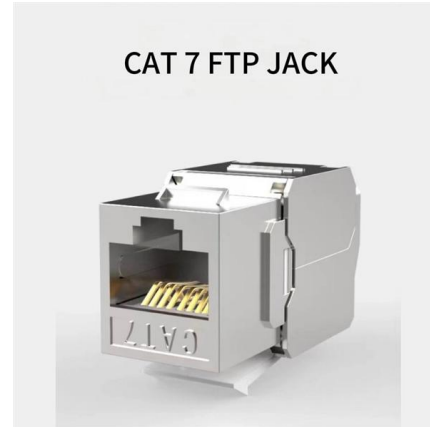
### **Check Address , Match an Eircode , An Post Address**

Verify Irish postal addresses easily with An Post Address Finder. Search by Eircode, Ireland's postcode and zip code system, for fast, accurate results.





Sie brauchen einen Reisestecker in Irland. Die Steckdosen in Irland sind vom Typ G. Die Netzspannung ist 230 V bei einer Frequenz von 50 Hz.



### Pluggable EDFA Amplifiers

Jabil Photonics' 10 gigabit small form-factor (XFP) erbium-doped fiber amplifier (EDFA) is a pluggable EDFA product designed for single-channel or full

### 100G/200G CFP2 DCO DWDM C-band 50GHz Tunable

FIBERSTAMP 100G/200G CFP2 DCO supports 100/200GE and OTN links reach up to 80km or 600km. It operates at full C-band tunable DWDM wavelengths with 50GHz channel spacing, and supports up



### E-LIQUIDS IRELAND

ELIQUIDS IRELAND High selection of the most trusted e liquids brands. We are choosing best ELIQUIDS, making sure prices for E liquids are lowest in Ireland E



## Erbium-Doped Fiber Amplifiers (EDFAs)

Empowering your network with unparalleled signal enhancement and reliability through our premium EDFA product line.



## Basics of EDFA Technology - MapYourTech

At its core, an EDFA is an optical amplifier that directly amplifies light signals traveling through optical fibers without the need for optical-to-electrical-to-optical conversion.

## Department of Foreign Affairs and Trade , Ireland.ie

Promoting Ireland's interests and values in the world. The Department provides a range of services to Irish citizens such as passport services, travel advice, visas.



## Insolvency Service of Ireland Registers

The Insolvency Service of Ireland Registers are an amalgamation of the Personal individual insolvency Arrangement (PIA), Debt Settlement Arrangements (DSA), Debt Relief Notice



### D7000 OA1835, DWDM EDFA Bidirectional Amplifier with PA 22

Integrate 200/400G Muxponder, EDFA, TFF, OPB, ROADM, OTDR, and OCM to flexibly match customer needs. Visual AmpCon-T/WebGUI realises one-click distribution of configurations and

Ordering information

NO.	1	2	3	4	5	6
Model	SP200	SP200	SP400	SP400	SP120	SP400
Product name	Patch Panel	Patch Panel	Patch Panel	Patch Panel	Patch Panel	Patch Panel
Illustration						
PLU	1	2	4	1	2	4
Maximum number of ports	144	288	576	144	288	576
Product size (including module and connector)	482.0*100.0*44.0 (mm)	482.0*100.0*88.0 (mm)	482.0*100.0*176.0 (mm)	482.0*100.0*44.0 (mm)	482.0*100.0*88.0 (mm)	482.0*100.0*176.0 (mm)
Standard color code	BA18005	BA18005	BA18005	BA18005	BA18005	BA18005
Inventory	2	2	2	2	2	2

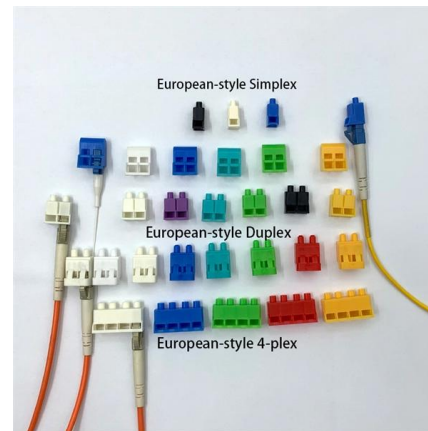


### Ireland

Check your need for a power plug (travel) adapter in Ireland. The power sockets in Ireland are of type G. The standard voltage is 230 V at a frequency of 50 Hz.

### Best Home Broadband , Vodafone Ireland

Want Unlimited Broadband with Ultra Hub 7 from an award-winning service provider? Get the best Smart Wi-Fi deals from Vodafone.



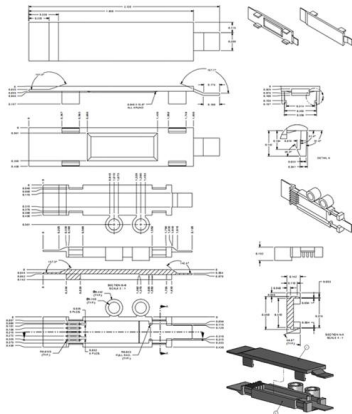
### Steckdosen in Irland: Diese Adapter braucht ihr

Steckdosen in Irland austricksen In Irland sind Steckdosen so gesichert, dass man oben einen Kontakt einschieben muss, bevor sich die beiden



## 25dB Gain Pre-Amplifier DWDM EDFA C-band 16dBm Output

In-Line Amplifier (LA) EDFA is designed to amplify all optical signals and compensate the insertion loss of optical devices or attenuation loss of optical fiber lines in DWDM system. It is usually placed at the



## Renew or replace your adult passport

Irish passports can be renewed from anywhere in the world using Passport Online. Irish adult passports, for citizens aged 18 and over, are valid for 10 years. You can apply for a new passport if your

## Steckdose Irland: Das müssen Sie vor der Reise beachten

In Irland wird der Steckdosen-Typ G verwendet. Dieser ist nur für Geräte mit dem Commonwealth-Stecker geeignet, erkennbar an den drei dünnen Pins. Einen Spannungswandler



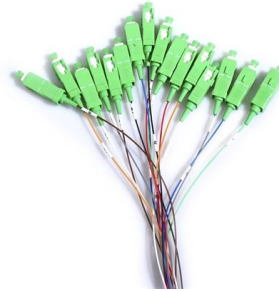
## Dual Mini EDFA

The Dual Channel EDFA is a super compact gain module with two independent inputs and outputs. These EDFAs share a dual uncooled 980nm pump laser. Each EDFA has independent control loop.



## Who Are Ireland's Electricity Suppliers? (2026 Guide)

Comprehensive 2026 directory of the 11 electricity suppliers in Ireland. Includes updated market shares, smart meter tariffs, and details on designated Suppliers of Last Resort.

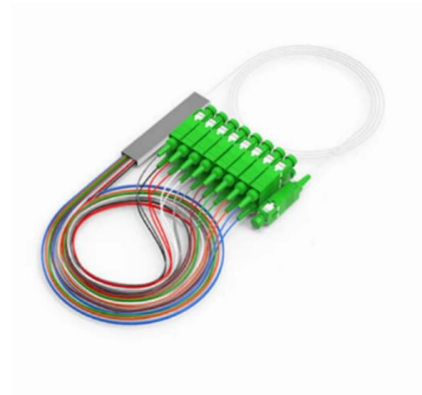


## Compare Gas & Electricity Prices Ireland , Find

Ireland's gas & electricity suppliers Ireland's energy providers compete to offer the cheapest gas and electricity prices. Introductory discounts provide households

## Ireland Voltage & Plug Adapters: What Americans Need

Ireland runs on 230V with Type G plugs -- different from US outlets. Here's what adapter to pack, whether you need a converter, and which US



## Fibotec

Die Fibotec Fiberoptics GmbH liefert Ihnen angepaßte Lösungen im Bereich der Faseroptik. Sie sind eingeladen, mit uns die unendlichen Möglichkeiten der



## **Beds Ireland , Irish-Made Beds & Mattresses**

Irish made Beds and mattresses from Irelands leading online bed retailer. Over 1000 5-Star Customer Reviews. FREE Delivery nationwide.



## **Ireland**

You need a power plug (travel) adapter in Ireland. The power sockets in Ireland are of type G. The standard voltage is 230 V at a frequency of 50 Hz.

## **Contact Us**

---

For datasheets, pricing, or custom high-speed optical interconnect solutions, please visit:  
<https://syropy.com.pl>