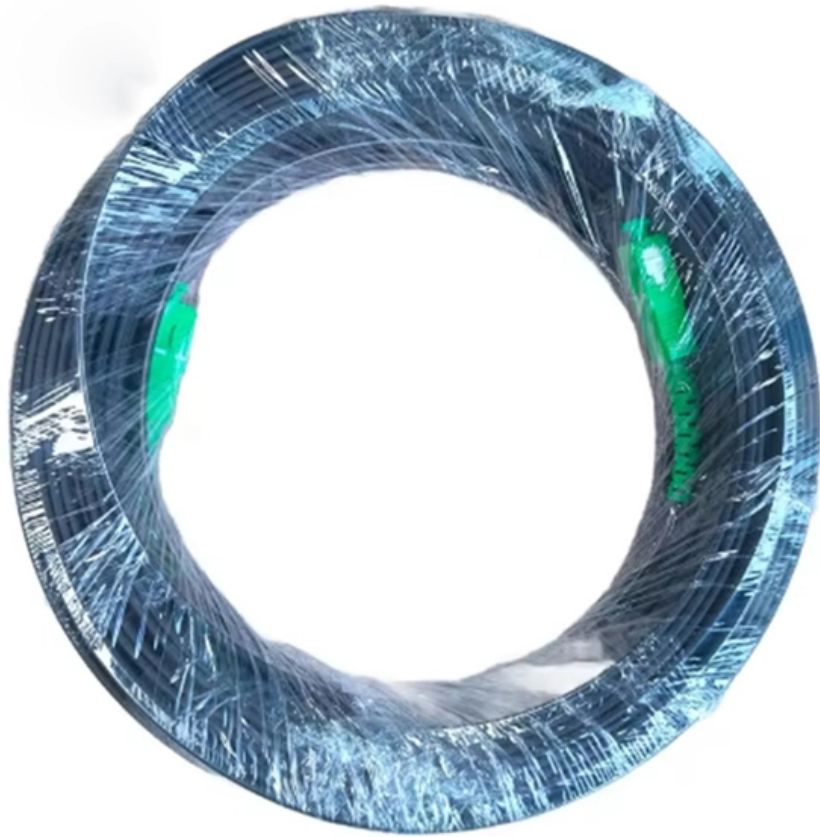


Irish Standard Distribution Box Dimensions





Overview

Compliant with ESB Networks National Code of Practice for customer interface 4th edition 2008. To comfortably accept the above cabinet, builders should provide an opening of 606mm (h) x 402 (w) x 155 (d). The builder/house owner must supply and install an ESB Networks approved outdoor meter box, which must be continuously accessible to ESB Networks and unobstructed by the box. Technical Documentation has been developed by Uisce Éireann's Connections and Developer Services which outlines the requirements for water services infrastructure within developments. The grp construct makes these units highly durable, corrosion and weather resistant. This device is specifically to detect and disconnect dangerous electrical arcs in both the fixed wiring and the connected equipment which could (due to insulation) in nature.



Irish Standard Distribution Box Dimensions



IS 10101 National Rules for Electrical Installation

The standard includes requirements for design and installation of all types of installations including housing, hospitals, agricultural buildings, caravans, construction sites, industrial premises and

Code of Practice for Water Infrastructure

SCOPE This Code of Practice outlines acceptable typical design and construction details that are required by Irish Water for the provision of water supply pipes and related infrastructure in Self-Lay



I.S. 10101 Summary of Key Changes

6th March 2020 The NSAI will publish the 5 th Edition National Rules for Electrical Installations, IS 10101:2020 (hereafter "the new standard") on 6 March 2020. This

I.S.10101 Bitesize Guide

This section also requires that distribution boards within household premises comply with the I.S. EN 61439-3 standard for electrical assemblies. All Hager consumer units, including bespoke special



SPECIAL EDITION I.S.10101:2020 NEWSLETTER

The new standard, also known as I.S. 10101:2020, will replace ET 101:2008, and has been produced by industry experts who sit on the NSAI's Electro Technical Committee (ETC/TC 2) "Electrical Instal

Download brochures & Drawings

For brochures and drawings of Electric and Gas Meter Boxes as well as Kiosks. View documents available.



Rev PL1

THE BOUNDARY BOX SHALL BE INSTALLED HYGIENICALLY & LEFT CLEAN & FREE OF CONSTRUCTION WASTE OR DIRT FOR LATER METER INSTALLATION BY IRISH WATER. BOX





National Rules for Electrical Installations I.S. 10101:2020 [a.k.a

The document is the first major revision to the standard in over 10 years and is based on internationally agreed standards for safety of electrical installations. The new standard, also known

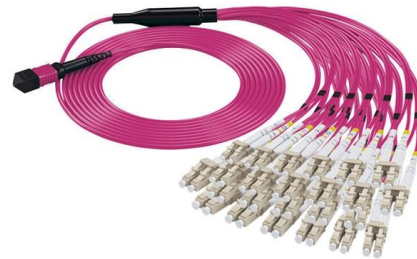


Meter Box Electrical Irish Standard Recessed

Meter Box Electrical Irish Standard Recessed
STOCK CODE: M617 ESB Networks specify that every house must have a meter box to house the electricity meter. The builder / house owner must supply

Water Infrastructure Standard Details

These Standard Details show the acceptable typical details and outline the minimum standards that are required by Uisce Éireann for the provision of water pipes and related infrastructure which are to be



Guide to the Installation of Telecoms Infrastructure in

An access box (sometimes called a small access chamber) is a plastic or concrete structure set below ground with a lid flush to the surrounding surface to facilitate the installation and maintenance of the



Electrical Meter Box Irish Standard Recessed

These units are constructed for housing domestic ESB electricity meters - cable entry through hockey stick. To comfortably accept the cabinet, builders should provide



Water Infrastructure Standard Details

These Standard Details have been developed to outline to developers Irish Water's requirements for the provision of water infrastructure that is to be installed in developments and that would be connected



Distribution Boxes , Fibox , ABS Electrical Enclosures I Demesne

Available in 10x38, 14x51, and 22x58 sizes with IEC, UL, and CSA approvals, they feature silver-plated contacts, IP20 touch-safe design, and optional blown fuse indicators -- giving panel builders reliable,



Microsoft Word

ESB Networks have introduced a revised Specification for electric meter boxes in Ireland. Taken in conjunction with the ESB Specification 2004, the changes are largely around the ESB's requirements



Distribution Boxes , Fibox , ABS Electrical Enclosures I Demesne

Demesne Electrical are stockist of Distribution Boxes in Ireland. Full Range of Enclosures & Accessories Available. Easy Online Ordering.



Irish Water Standard Details for Water Network Management Contracts

se services for works to the existing water network infrastructure. The standard details have been successfully used by Irish Water's own internal functions for a va There are 36 no. standard details

METER BOXES

For ESB O/H supply situation, see sketch on pages 12/13 of the National Code of Practice for Customer Interface, 3rd Edition 2002 and/or contact local ESB oice before fitting box.



Layout1

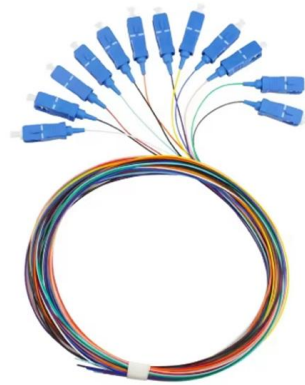
BOUNDARY BOX DETAILS 1. MINIMUM SIZE AND SPECIFICATION OF SERVICE PIPE IN ACCORDANCE WITH IRISH WATER SPECIFICATION.





The Distribution System Security and Planning Standards

The distribution system should be planned, designed, maintained and operated so that it can support the provision to customers of connections to their contracted level of power in compliance with power



Irish Box Company

Industrial strength plastic boxes, containers and pallets delivered direct all over Ireland. We also produce customised products to order.

Chapter 9 Appendix Materials

SCOPE This Code of Practice outlines acceptable typical design and construction details that are required by Irish Water for the provision of water supply pipes and related infrastructure in Self-Lay



METER BOXES

BOXES ELECTRICAL STREET LIGHTING PRE WIRED BOX POLE MOUNTED 360 x 252 x 140MM COMPLIES WITH IRISH STANDARDS



Meter Box Electrical Irish Standard Recessed

To comfortably accept the above cabinet, builders should provide an opening of 606mm (h) x 402 (w) x 155 (d). Where applicable, ensure that the door hangs so as to allow the latch to fall into closed position.



Electric Meter Boxes

Full range of electric meter boxes in Ireland. Made of SMC - Resistant - Weatherproof - Spares available. Contact us for wholesale and trade prices.

Distribution Boxes , National Electrical Wholesalers

Leading Irish Electrical Wholesaler since 1935. Expert in electrical equipment, lighting, wiring accessories, CCTV, fire alarms, and more. Nationwide branches, committed to quality and service.



Contact Us

For datasheets, pricing, or custom high-speed optical interconnect solutions, please visit:
<https://syropy.com.pl>