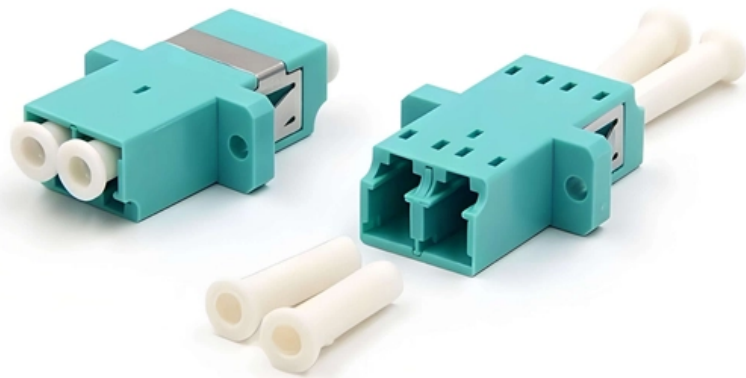
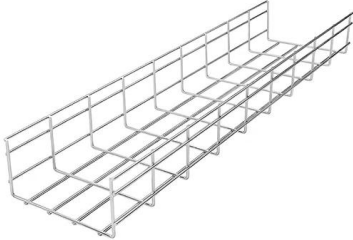


Is MT a cable tray or a wire duct





Is MT a cable tray or a wire duct



What is a Wire Duct?

Wire ducts, also known as cable trays, wire troughs, wiring troughs, and wire troughs (different from place to place). They are electrical appliances

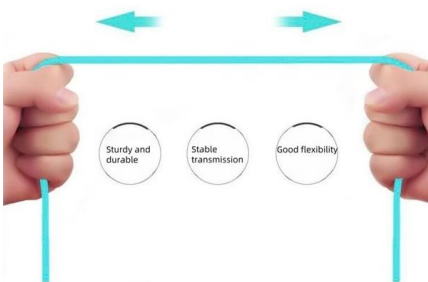
Cable Tray vs Air Duct: A Complete Guide for UK

Cable Tray vs Air Duct: Learn key differences in function, types, cost & installation for UK M& E projects. Comply with BS standards.



More durable and robust

The outer layer is made of environmentally friendly PVC, which is soft and elastic. It can be stretched without damage, so you can use it with confidence.

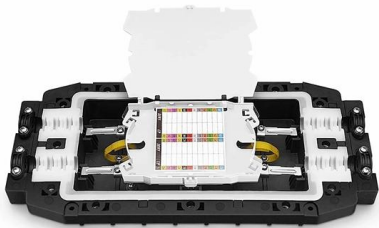


Cable Tray vs. Wireway: Which Offers the Best Cable Protection?

Although both cable tray and wireway perform the same function, there are significant differences between the two that are

Cable Tray vs Cable Duct: Selection Guide -- Shanghai Unicorn

Choosing between open cable tray and enclosed wireway/duct affects heat dissipation, ampacity derating, code compliance, and long-term maintenance. Here's the complete guide.



Tray Cable and Cable Trays Vs. Conduit: A

Conduits do not effectively allow cables to dissipate heat and restrict access to the cables within. This makes it difficult to inspect the wires or locate

Cable tray vs cable basket vs cable ladder vs cable

This article will discuss the four most common types of cable containment and their uses: cable tray, cable basket, cable ladder, and cable



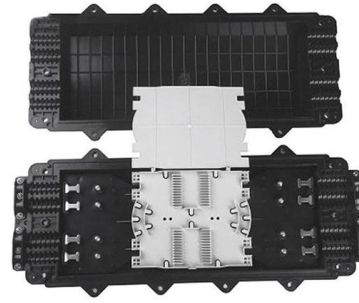
Power distribution options: Comparing feeder methods

Voltage drop, short circuit, coordination, arc flash: Bus duct is inherently less resistive than wire/conduit and cable/tray options. While this is a



Cable Trays vs Conduits: Which One Should You

In this post, we'll explore the key differences between cable trays vs conduits, highlight their pros and cons, and guide you toward the best choice based on

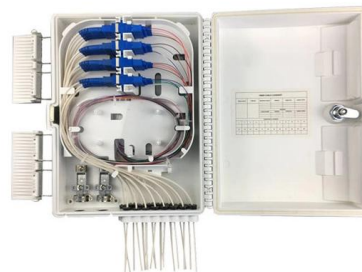


Types of Cable Typically Used in Cable Tray

The cable must be secured at intervals not exceeding six feet. TC cables are not permitted to be installed outside of a cable tray system or raceway with only two

Conduit or Cable Tray? The easy guide.

The Solid Bottom cable tray is generally used for minimal heat-generating electrical or telecommunication applications with short to intermediate support spans. Wire Mesh Job site or field



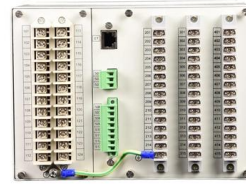
Cable Management Compared: Ties, Trays, and Ducts

Master your workspace with our guide to cable management. We compare the pros and cons of cable ties, trays, and ducts to help you organize.



What is the Difference Between Cable Tray vs Cable Duct?

What are the key factors to consider when choosing between a cable tray and a cable duct for my project? When deciding between a cable tray and a



Cable Management Compared: Ties, Trays, and Ducts

The process of selecting the appropriate method of cable holds is determined by the weight of the cables and the heat they produce. On large-scale

Wire Trays , McMaster-Carr

Choose from our selection of wire trays, including over 850 products in a wide range of styles and sizes. Same and Next Day Delivery.



Cable Tray Specification Guide , Types, Materials, Sizes

Choosing the appropriate wire duct system involves a meticulous evaluation of several factors. These include the load-bearing capacity, material durability, and compatibility with environmental conditions.



Cable Tray vs. Wireway: Which Offers the Best Cable Protection?

If you are looking for a safe and efficient way to organize and protect cables, you may have come across two terms: cable tray



Tray Cable and Cable Trays Vs. Conduit: A

There are many different types of cable trays, including ladder trays, solid-bottom, trough, channel, wire mesh, and single rail cable trays, each of

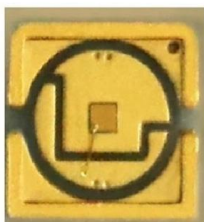
Cable Trays and Ducts: A Comprehensive Guide

Cable ducts, also known as cable conduits or raceways, are enclosed channels designed to protect and route electrical cables and wiring. They provide a higher level of physical protection and



Wire Cable Tray System

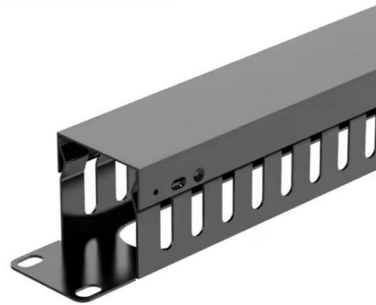
Wire Cable Tray System Installation material that offers optimal flexibility when laying pipes, power, data and control cables, suitable for server cabinets and network





The Difference between Bus Duct vs Cable Tray

Bus duct vs cable tray: bus ducts handle high fault currents; cable trays manage power/data cables in commercial setups. When planning an



Installation ducts: an overview of technologies and assembly solutions

A cable tray is a rigid cover--usually in the form of an open or closed channel--designed for guiding and protecting electrical, signal, telecommunication cables, or installation pipes. It can be

A Comprehensive Guide to Tray Cable

Since cable trays do not fully enclose cables, which would be the case with cable raceway or ducts, tray cable must conform to strict requirements to



Cable Duct vs. Cable Tray: Choosing the Best Solution

Confused about cable duct vs. cable tray? We break down the differences in material, use, and cost to help you choose the right cable

Cable Duct vs Cable Tray: Best Cable



Management

When comparing cable duct vs cable tray, it's essential to understand the role each system plays in wiring and cable management. Cable trays are

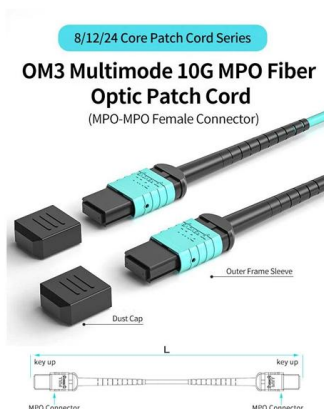


Cable tray

In the electrical wiring of buildings, a cable tray system is used to support insulated electrical cables used for power distribution, control, and communication. Cable

Cable Tray vs Cable Basket vs Cable Ladder vs Cable

Compare cable tray, basket, ladder & trunking systems. Learn the pros, cons, and best uses for each type, with links to our UK product ranges.



Cable Conduit vs. Cable Tray: Alternatives To Open Wiring

Two common alternatives to open wiring (types of an enclosed wiring system) are cable conduit and cable tray. Let's focus on which one to choose for



Contact Us

For datasheets, pricing, or custom high-speed optical interconnect solutions,
please visit:

<https://syropy.com.pl>