

Is a cable management rack always required for a patch panel





Is a cable management rack always required for a patch panel



What is Patch Panel & what is the purpose of Patch

What are Patch Panels? Patch panels are effective and flexible networking devices that connect various IT devices. Used within IP-networks,

Patch Panels: Pros, Cons, and Best Practices for

Discover the pros and cons of patch panels, their applications in data centers and enterprises, and how to choose the right one for optimized network management.



Cable Manager vs. Patch Panel: Simplify Cable Organization

Choosing between a cable management system and a patch panel doesn't need to be confusing. Each tool has its place, and using both can make your setup better, cleaner, and easier to

A Comprehensive Guide to Effective Cable

Learn from experts with decades of experience about installing and managing patch panels and switches effectively in data centers. An ultimate



Cable Plant Basics: Master Network Management

Mastering Network Management: The Essential Guide to Patch Panels Cable Plant Basics: Master Network Management - ITU Online Learn



Networking Patch Panel Wiki, Types, and Purposes

Under such a circumstance, the patch panel for networking will do help to effectively manage those cumbersome cables. Then, a



Cable Manager vs Patch Panel: Organize Cables in

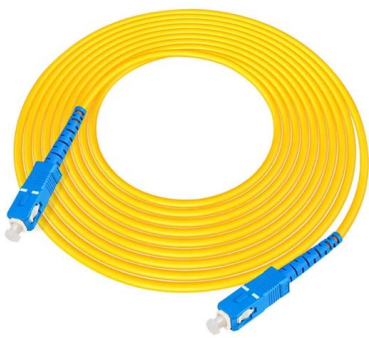
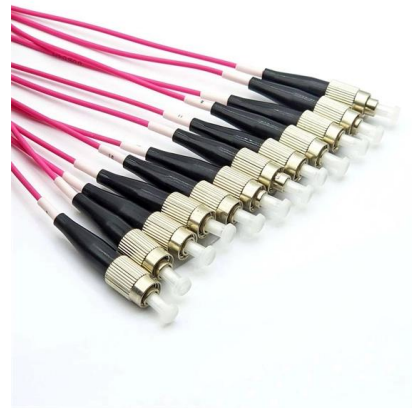
A cable manager is mainly used to organize, secure, and protect cables. It helps keep cables untangled, ensures a clear path for them, and





Cable Manager vs Patch Panel: Simplify Cable

Discover the difference between a cable manager and a patch panel, their roles in cable management, and how they aid to keep your network



Difference between cable managers and patch panels

Literally speaking, a cable management rack is a support structure for organizing cables and is typically used in conjunction with a patch panel.

The Role of Patch Panels in Modern Networks

Patch panels are hardware components that serve as a connection point for network cables, allowing for the efficient management of network infrastructure. They are typically mounted in



- ✓ 100KWH/215KWH
- ✓ LIQUID/AIR COOLING
- ✓ IP54/IP55
- ✓ BATTERY 6000 CYCLES

Cable Management for Small LAN with 24-Port Patch

This guide explains how to use a 24-port patch panel to manage copper and fiber cabling in a small LAN, how to choose between different patch



What is a Patch Panel Used for and How Does it Work?

A modern cable network consists of many components that require a high level of organization. A patch panel is one of the rack mount wire



Cable Manager vs Patch Panel: Simplify Cable

Organizing cables using cable managers and patch panels is a requirement for network reliability, scalability, and easy maintenance. Choosing

Cable Manager vs Patch Panel: Organize Cables in

Many people may wonder if it's necessary to use cable managers and patch panels together. The answer is yes. As mentioned earlier, these two



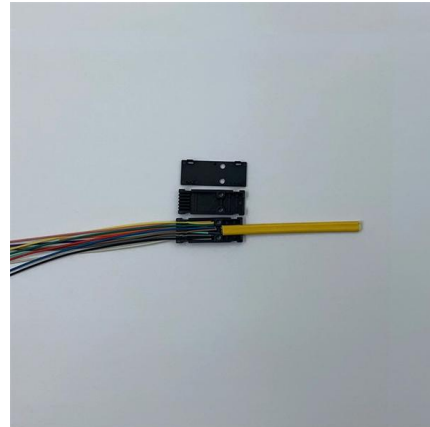
Build a Reliable Ethernet Patch Panel System , Server

The golden rule: Every cable entering the server rack lands on a patch panel before it gets to the switch.



How to Install a Rack Mount Patch Panel?

Sharing the same blood with a patch panel, patch panel rack version is also a mounted hardware assembly containing ports to connect and manage



A Guide to Patch Panels

Patch Panels are a standard rack panel punched with ports for network connectors featuring ID strips/labels to help with identification. Many

Structured Cabling Patch Panel Setup Guide for Your

A disorganized data center rack full of tangled network cable runs is a direct liability to your network's stability. When cables used for connectivity are a



What is a Patch Panel and Why You Need It?

Patch Panel Cable Management System With dozens, or even hundreds, of cables coming into and out of a patch panel, it can be easy for



Patch Panels: A Complete Guide

Patch panels are one of the best ways to manage an expansive local area network (LAN) by providing quick and easy access to the ports and



Patch Panel Wire Management for IT Teams

Patch panels should be logically placed within network racks, ideally near

How does a patch panel work?

Discover how a patch panel works, its role in network cable management, and how to optimize your infrastructure.



Guidelines for Data Center Rack Cable Management

For a good cable management of data center rack, it cannot do without suitable cable managing devices. Basically, there are three major types of cable



A Guide to Patch Panel Cable Management - VCELINK

Using patch panels is essential for efficient cable management in small or large-scale network installation. Use the right patch panel for your network need.



Patch Panels: What They Do and Why You Need One

Patch Panel: What it is and why your data center needs it Your data center is only as reliable as its weakest link. You could have the best infrastructure and technology

Structured Cabling Patch Panel Setup Guide for Your

Our guide delivers actionable, step-by-step best practices for rack layout, cable management, and patch panel installation. Following these steps



Patch Panels Explained: Types, Benefits, and How They Work

Learn what a patch panel is, how it works, and why it's essential for modern structured cabling--improving cable management, scalability, and network performance.



Server Rack Patch Panel : Essential Guide for Home

What Is a Server Rack Patch Panel? If you've ever found yourself wrestling with a jungle of Ethernet cables behind your server rack, you're not alone. That's where



What Is a Patch Panel? And Why It's Essential in

What Is a Patch Panel? Think of a patch panel as the backbone of your wired network. It's a flat, rack-mounted hardware unit that houses multiple cable

Patch Panel Cable Management: Stop Losing Hours to Cable Chaos

Poor patch panel cable management doesn't just make racks look messy -- it silently drains operational budgets through extended MTTR (Mean Time To Repair), thermal inefficiency,



Contact Us

For datasheets, pricing, or custom high-speed optical interconnect solutions, please visit:
<https://syropy.com.pl>