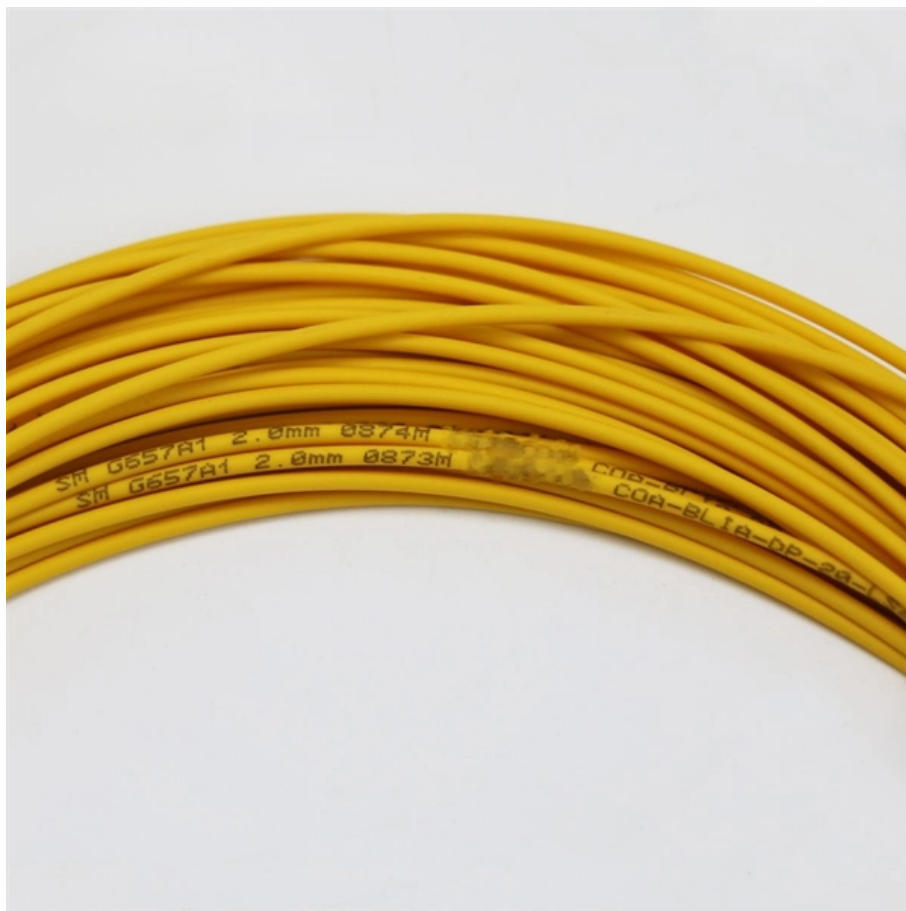


Is it safe to sit on a cable tray





Overview

Cable trays effectively lift cables off the floor, eliminating the risk of employees tripping over loose wires and causing potential injuries. It is a critical operational failure mode that can damage expensive connectors, pull devices off surfaces, and create "desk stalls"—a phenomenon where a standing desk appears to have a motor failure when, in reality, it is simply being held back by a taut cable. The CTI had proposed an addition to NFPA 70E: Electrical Safety Requirements for Employee Workplaces concerning walking on cable trays. This recommendation is already in the NEMA VE-1 standard and cable tray manufacturers literature and tray sections.



Is it safe to sit on a cable tray

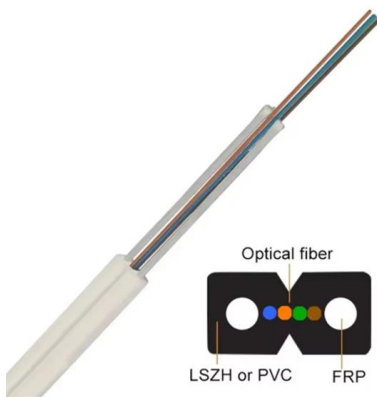


Cable Tray Support Spacing: Key Guidelines Explained

Cable trays are a safe, durable, and cost-effective method of cable management for commercial and industrial applications. The three main types of

Cable Tray vs. Sleeve , Choose Your Desk Cable Solution

Comparison of under-desk cable trays and sleeves details pros, cons, and installation tips. Organize your wires for a safe, tidy, and efficient workspace.

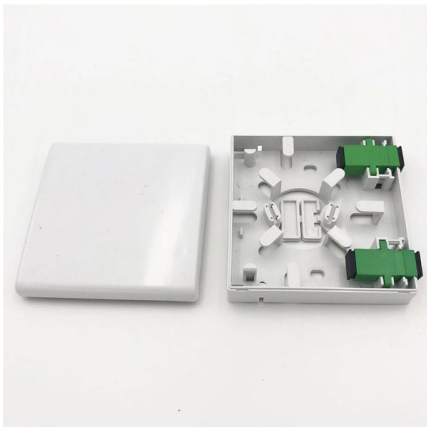


2026 Cable Tray Guide: Placement & Safety

A technical checklist for cable tray placement and safety, based on ISO 9241-5 and BIFMA standards. Learn about cable weight rules and thermal

Cable Trays Manufacturer & Supplier in India

Ajay Industrial Cable Trays - Durable & Safe Electrical Management Solutions Ajay Industrial Corporation Limited (AICL) is one of the leading cable tray



Installation Of Cable In Cable Trays: NEC, Safety

Cable tray layout must take into consideration the design limits of the cable. To minimize damage and verify integrity after installation, follow the practices

Cable Tray Trunking & Ladder Installation Method for

The purpose of this article is to define the sequence and methodology for the installation of electrical cable trays, cable trunking, cable raceways and boxes,



Understanding Cable Tray Safety Hazards: A Detailed

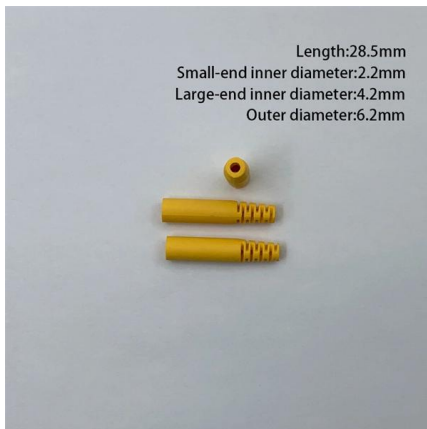
Learn about common cable tray safety hazards and how to prevent risks such as cable damage, electrical short circuits, moisture intrusion, and more.





CTI Promotes Work Place Safety , Cable Tray Institute

Inasmuch as cable tray is designed as a support for power or control cables, or both, and is not intended or designed to be a walkway for personnel, the user is urged to display appropriate warnings



working on cable trays , Information by Electrical Professionals for

Are there any laws in the U.S. that prohibit working, crawling, or walking on energized high voltage cable trays? If so what or where are they? Cable trays are not designed to for "people

OSHA Cable Tray Safety Guidelines

The document outlines safety procedures for installing wire ways and cable trays, emphasizing compliance with OSHA regulations to ensure a safe working



Guys, how normal is this, really? : r/electricians

Second, most cable trays will warn that they are not intended to be walked or climbed on. Third, I'm sure you guys could have set up a pulley or two to navigate that radius.

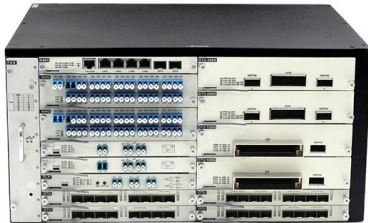


Electricians in Energized Cable Trays , Information by Electrical

Re: Electricians in Energized Cable Trays The situation of crawling in a energized cable tray that has 480 cables, and you are walking, crawling, laying, etc. on the cables is a very

STAINLESS STEEL WIRE MESH

- Long-lasting and durable
- Comprehensive specifications
- Customized non-standard products



Safety Issues for Cable Tray: Your Guide to Secure

Learn about crucial safety issues for cable trays during installation, repair, and maintenance. Protect your team with essential precautions and best

Hot-Dipped Galvanized Ladder Tray

Rigid, hot-dip galvanized Cope cable trays ensure safe, easy installation and meet NEMA VE-1 standards.



Length:19.8mm
 Small-end inner diameter:2.0mm
 Large-end inner diameter:5.3mm
 Outer diameter:6.0mm



2026 Cable Tray Guide: Placement & Safety

This article provides a definitive technical checklist for cable tray placement and safety, grounded in ergonomic science and mechanical

Safely Installing, Maintaining and



Inspecting Cable Trays

A generic guideline developed by the Cable Tray Institute indicates that cable trays should not be filled in excess of 40-50% of the inside area of the tray or of the tray's maximum weight based on the cable



OSHA Cable Tray Safety Guidelines

It highlights the hazards associated with overloaded cable trays, including tray collapse, electric shock, and cable damage, and provides best practices to

DK-07 WOOD

Designed for a Clean, Organized Workspace Dual cable pass-through holes on the desktop, paired with rear cable clips and a cable tray, help route cables neatly out of sight. The result is a clutter-free desk



Cable Tray Systems: Requirements and Best Practices

Comprehensive guide to cable tray systems requirements: tray types, materials, loading, supports, bonding, routing, and best practices for safe electrical cable management.



Cable Tray Trunking & Ladder Installation Method Statement

Below is a complete method statement for installation of cable tray, cable trunking and cable ladders in compliance with project specifications and approved material submittals.
Tool Required:



FIRE RESISTANT PROOF CABLE TRAY, DIN STANDARD E90

Cablofil cable tray has been successfully tested and proven to meet fire safety requirements. Due to the absence of a European standard on cable tray fire resistance Cablofil utilised the stringent German

faker/internet.go at master · pioz/faker · GitHub

Random fake data and struct generator for Go. Contribute to pioz/faker development by creating an account on GitHub.



Electrical Safety First: How Cable Trays Protect Your

Ensure maximum electrical safety with cable trays! Learn how they prevent wire damage, improve organization, and enhance equipment





Enhancing Workplace Safety with Cable Trays , Reducing Hazards

Improve workplace safety by reducing hazards and accidents with the installation of cable trays. Learn about the benefits, best practices for installation, and maintenance tips that can help



Cable Tray System Safety: What You Need to Know

Learn about Cable Tray System Safety rules. We cover design, installation, use, and maintenance to help avoid common problems and keep things safe.

How to Prevent Fire and Electric Hazards in Cable Tray

Safety of a cable tray is not a matter of compliance with codes, but a matter of saving human life and billions of dollars' worth of infrastructure. Poorly



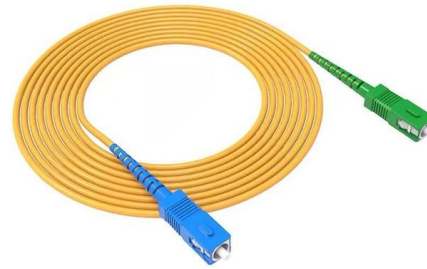
Cable Tray Systems Help in Improving Workplace Safety

Step up your workspace safety by using cable-tray systems from Hutaib Electrical. Learn how our solutions prevent electrical hazards, reduce



Enhancing Workplace Safety with Cable Trays , Reducing Hazards

Workplace safety is of paramount importance, and when it comes to cable management, the proper use of cable trays can significantly contribute to creating a safe and accident-free



Contact Us

For datasheets, pricing, or custom high-speed optical interconnect solutions, please visit:
<https://syropy.com.pl>