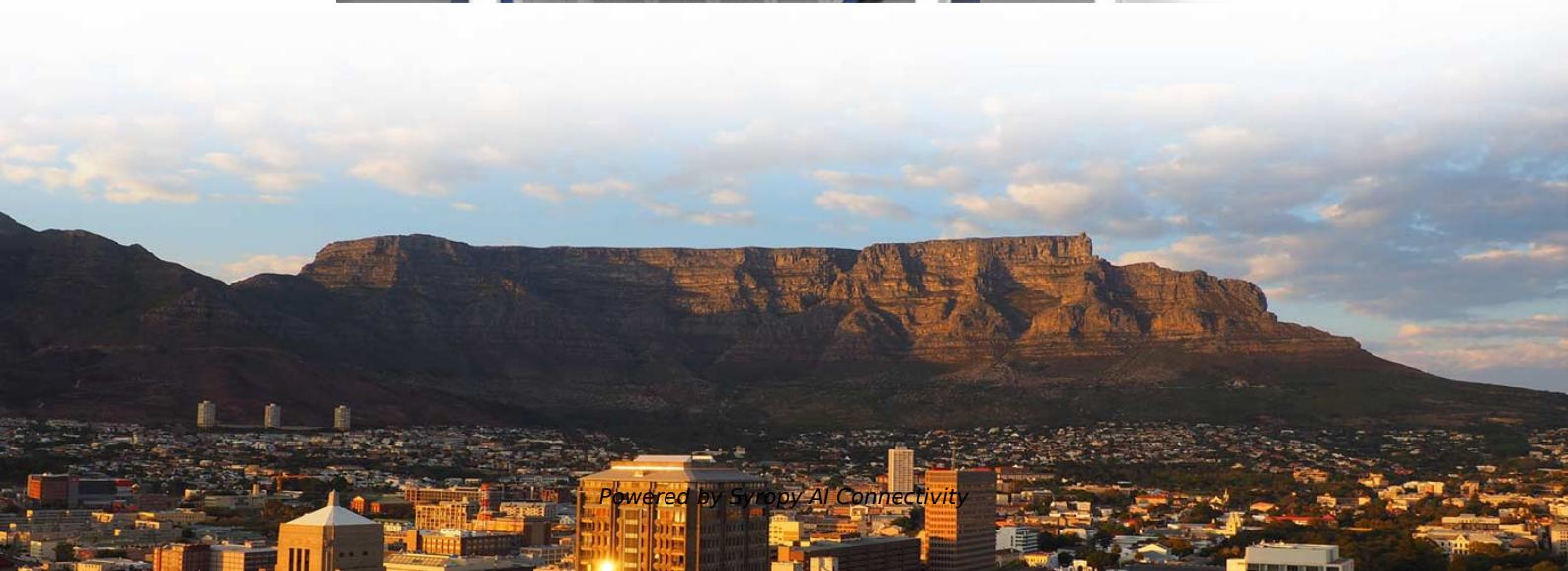


Laser Diode Focusing Fast and Slow Axis





Overview

The terms "fast axis" and "slow axis" in diode lasers refer to the divergence characteristics of the laser beam. The characteristics of a laser diode beam propagating through optical elements is analyzed using three commonly used math tools: analytical tool thin lens equation and ABCD matrix, numerical calculation, and software tool Zemax. Whether a diode laser is a traditional monolithic design or utilizes an external cavity configuration, the laser light must still propagate through the diode's PN-junction via a ridge waveguide. As a result, the beam profile of edge emitting diodes is unique when compared to all laser sources. Broad area laser diodes (also called broad stripe, multimode single emitters or broad emitter laser diodes, single-emitter laser diodes, and high brightness diode lasers) are edge-emitting laser diodes where the emitting region at the front facet has the shape of a broad stripe (see Figure 2), with. Hello, so, I was finetuning the infinity focus of my Gatling, and I noticed that the axis that starts out wider is actually the less divergent axis, and the initially smaller axis is actually the more divergent axis. Is this normal?

I can't wrap my head around why this would happen, I believed that.



Laser Diode Focusing Fast and Slow Axis

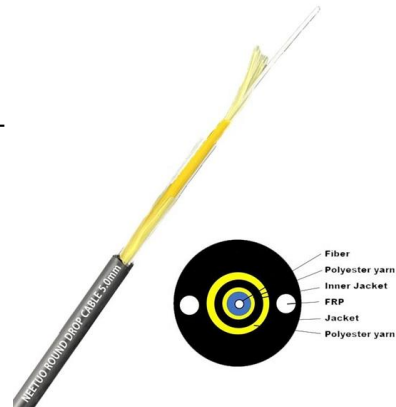


From left to right, fast axis, slow axis and output beam

The beam quality mismatch in the fast and slow axes of laser diode stacks limits their applications. An effective beam-shaping method was proposed based on a pair of

Broad Area Laser Diodes

Broad area (or broad stripe) laser diodes are high-power laser diodes with a strongly asymmetric shape of the emitting region.



Diode Laser Systems , Custom Lens Design , Universe Optics

Cylindrical Lenses Collimate or reshape light in one axis. Useful for correcting the fast or slow axis independently. Often applied in diode bar or stacked emitter systems. Rod Lenses Small cylindrical



Laser Diode Collimators - single-emitter laser diodes,

Some laser diode collimators are adjustable, e.g. such that by rotating a cap (possibly equipped with a scale) one can fine-adjust the focus via the distance



Beam Quality Improvement of Broad-Area Laser Diodes by Fast-to-Slow

A novel technique for beam quality improvement of a broad-area diode array has been demonstrated. For each emitter, the fast-axis mode is imaged back onto the slow axis, improving beam quality while

Laser Diode Beam Propagation Basics , Springer Nature Link

Laser diode beam propagation characteristics, the collimating and focusing behaviors and the M^2 factor are discussed using equations and graphs. Thin lens equation modified to be



2019_Whitepaper_Fusilica_Blue_FAC dd

Effectively utilizing laser diode output almost always requires collimation or other reshaping of this divergent, asymmetric beam. And, this is typically done using separate optics for the fast and slow



High Power Semiconductor Diode Lasers

or the fast axis collimator aperture. While in the slow axis direction, the output beam is mu ti-mode and the beam quality is poor. The beam quality can be directly improved by reducing the divergence

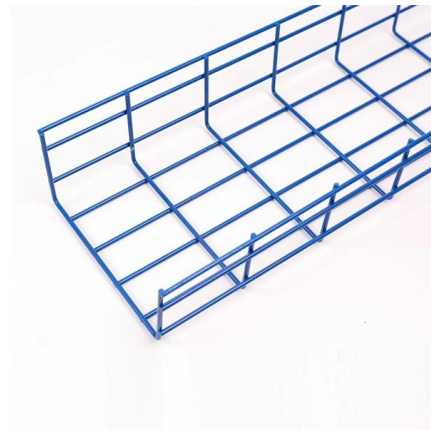


Chapter 1 Laser Diode Basics

Abstract The optical characteristics of laser diodes are summarized. The electrical, mechanical and temperature characteristics of laser diodes are briefly summarized. Vendors and distributors for laser

Beam-shaping technique for fiber-coupled diode laser system by

Abstract A beam shaping technique is presented to homogenize the beam quality of two laser diode stacks. We use polarization beam combiners to halve the beam sizes in the slow axis,



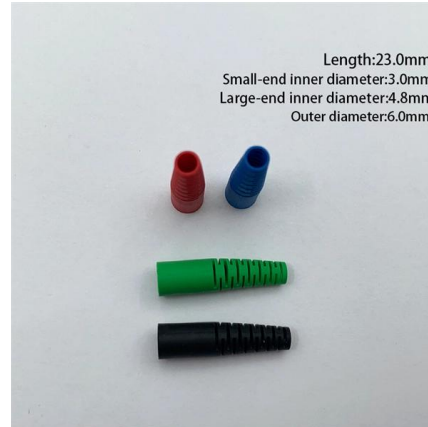
Laser Diode Basics , Springer Nature Link

Laser diode users should slowly increase the current till the laser power reaches the level specified by the datasheet to avoid overdriving the laser diode. A fraction of second of overdriving



The Role of Fast Axis Collimators (FAC) in Laser

Discover the crucial role of Fast Axis Collimators (FAC) in modern laser technology. Learn about their principles, functions, and applications in fields like fiber optic



Laser Diodes - semiconductor, gain, index guiding, high

Laser diodes are semiconductor lasers with a current-carrying p-n junction as the gain medium. They are the most important type of electrically pumped lasers.

Laser Diode Beam Properties , Blogs , RPMC Lasers

Now, in all cases, the fast axis of the beam will only contain a single longitudinal mode because the beam is contained within such a narrow cavity.



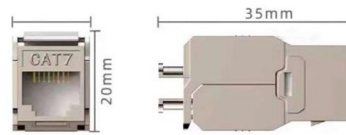
Laser Beam Collimation

A diode laser beam features low wavefront quality and high astigmatism - the divergence in the so-called fast axis is much higher than divergence in the slow axis.



A homogeneous focusing system for diode lasers and its applications

Here we present the design of a focusing lens group for a 3 kW diode laser which has been collimated along the fast and slow axes. The incident light of the focusing lens group has a



Laser Diodes

About Laser Diodes Common laser diodes in general do not produce round output beams, due to the way that they are fabricated in a planar arrangement. The

Divergence Angle of Laser Diode Bars: From Broad

In the slow axis, the beam expands along the length of the bar across multiple emitters, resulting in a smaller divergence angle. As a result, laser diode bars



Reduction of beam divergence angle in laser-diode arrays with large

This technique enables the reduction of the angle of divergence in a slow axis direction for large smile laser-diode bars. Using two angled half-BTSSs, a fiber-coupling module with a 400 μ m

Collimation of laser diode beams for free



space optical

Based on a far-field asymptotic expression of diode laser beams, the collimation characteristics of a diode laser beam are investigated. In this paper we propose a method for



Laser Diode Basics , Springer Nature Link

However, laser diode beams have large divergences, elliptical shapes and astigmatisms, and therefore are difficult to manipulate compared with almost any other types of laser beams. Laser



FISBA's Fast Axis Collimators Improve Diode Laser System Performan

makes this FAC lens particularly suitable for very high laser out-put. The lens is fabricated wit an acylindrical shape, guaranteeing the usual excellent perform-mance. Owing to FISBA's particularly



Single-mode vs Multimode Fabry-Perot Laser Diodes

FP laser diodes are sometimes categorized as single-mode or multimode, which refers to single spatial mode or multi-spatial mode. The key contrasting difference



Broad Area Laser Diodes

What are the 'fast axis' and 'slow axis' of a broad area diode laser? The 'fast axis' corresponds to the narrow dimension of the emitter, where the beam diverges



Laser beam focusing

All you need to know about diode lasers focusing. Everything about 3 elements, G2, G7, G8 laser lenses. A lot of video guides and tutorials!

Fast and slow axis , Laser Pointer Forums

What seems to be happening is that when the laser isn't focused to infinity the fast and slow axes are the same as before passing through the lens, but when it gets close to infinity, at some



Beam quality improvement of broad-area laser diodes by fast-to-slow

A novel technique for beam quality improvement of a broad-area diode array has been demonstrated. For each emitter, the fast-axis mode is imaged back onto the slow axis, improving beam quality while



FISBA's Fast Axis Collimators Improve Diode Laser System Performan

Improve Diode Laser System Performance Diode lasers are efficient, compact, and robust laser sources. Their size, weight, and power usage advantages are driving innovation, and that innovation in turn



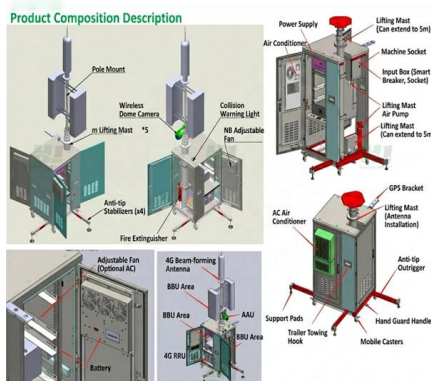
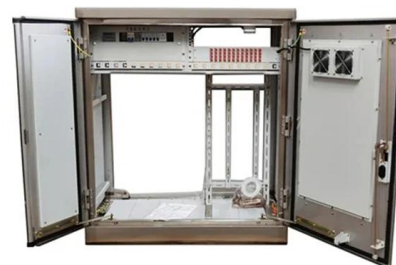
9 Best Diode Laser Engraver , True 40W Power, Honestly Measured

After deep analysis of laser power, precision, and safety features, this guide reveals the absolute best diode laser engraver for every workshop and budget.



Chapter 2 Laser Diode Beam Basics

aser diodes are most widely used. Their beams are ellip-tical, asti matic, and have large divergence. These characteristics make lase diode beams difficult to handle. In this chapter we discuss in detail



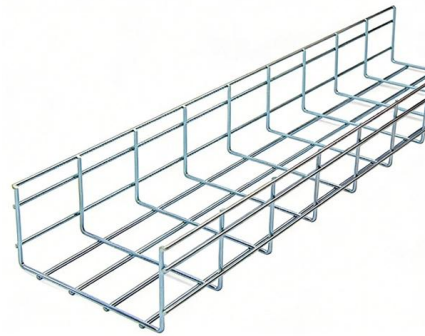
Fisba_WhitePaper_MicroOptics_V2

Lower picture: Fast axis collimator (FAC), slow axis collimator array and focusing lens. tor, FAC, is a precision-engineered acircular cylindrical lens that collimates the high-diver-gence output axis of a



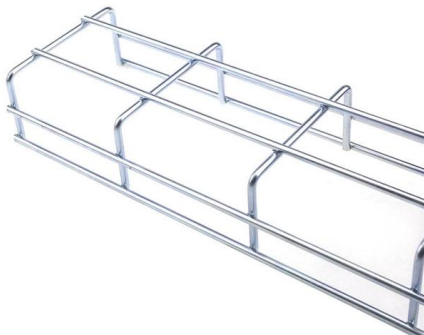
Laser Diode Beam Manipulations , Springer Nature Link

The linear polarization of laser diodes is in the slow axis direction and does not affect the focusing in the fast axis direction. Mansuripur showed that when a laser beam is focused with a



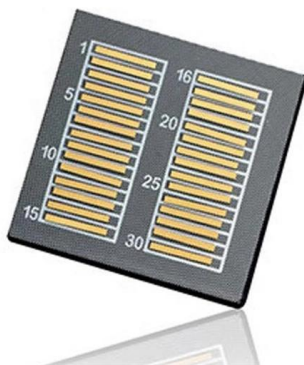
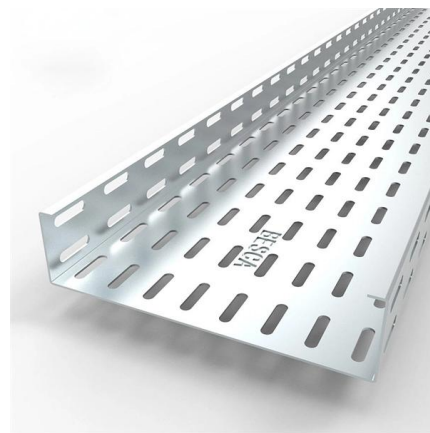
A homogeneous focusing system for diode lasers and its applications

For a diode laser, the main aberration of the beam along the slow axis is coma, which is not so obvious along the fast axis. The triplet lenses can do well in eliminating the coma,



Fast-to-slow axis mode imaging for brightness

Download Citation , Fast-to-slow axis mode imaging for brightness enhancement of a broad-area laser diode array , Broad-area laser (BAL) diodes have found use in numerous



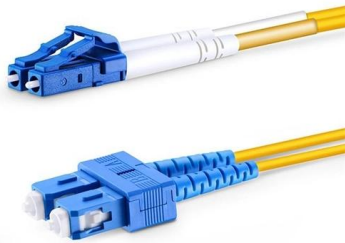
Diode Laser Systems , Custom Lens Design , Universe Optics

Fast axis collimation is performed first with FAC lenses mounted very close to the diode. Slow axis collimation is performed later, typically with a cylindrical lens or aspheric element.



Fast and slow axis , Laser Pointer Forums

Thanks, but my question is about the fast axis turning into the slow axis after passing through the lens. This article talks about the raw diode output. I measured it, at point-blank the spot



Why do people refer to the "fast axis" vs. "slow axis" of Diode Lasers

The terms "fast axis" and "slow axis" in diode lasers refer to the divergence characteristics of the laser beam. The fast axis exhibits a wider divergence, while the slow axis has low divergence,

Why do people refer to the "fast axis" vs. "slow axis" of Diode Lasers

Click For Summary The terms "fast axis" and "slow axis" in diode lasers refer to the divergence characteristics of the laser beam. The fast axis exhibits a wider divergence, while the



Single Transverse Laser Diode Beam Manipulation Optics

3.1.2 Beam Shape Evolution The waist of a single TE laser diode beam is elliptical with the major axis of the ellipse in the slow axis direction as shown in Fig. 3.2a. The beam diverts faster in the fast axis



Contact Us

For datasheets, pricing, or custom high-speed optical interconnect solutions,
please visit:

<https://syropy.com.pl>