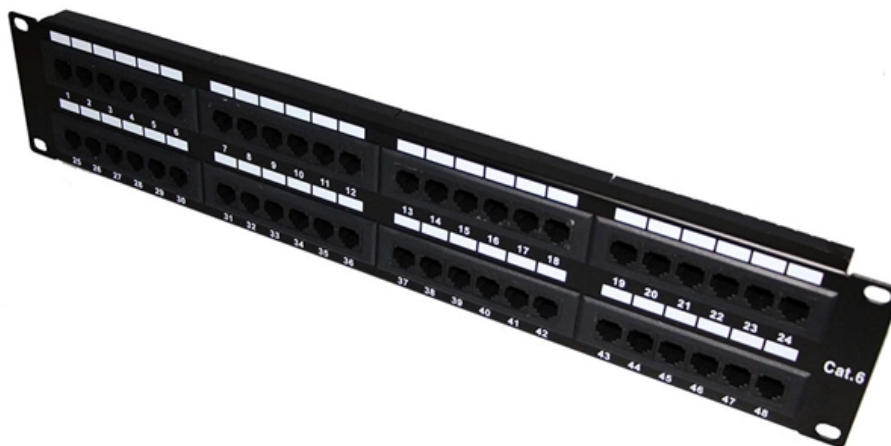




Syropy AI Connectivity

Living next to a power distribution box





Overview

Living next to a power transformer presents both challenges and benefits. While concerns about power transformer Damage, health risks from EMFs, noise pollution, and property values are valid, many of these issues can be mitigated through technology, regulation, and. With electrical infrastructure being a critical part of modern living, navigating the. These substations are an integral part of the electricity distribution system and are located near to homes as they supply our electricity - usually via underground cables.



Living next to a power distribution box



How Close Can You Live to Power Lines?

Understand the legal, physical, and financial realities of living near power lines. We cover easements, EMF dissipation, and property value impact.

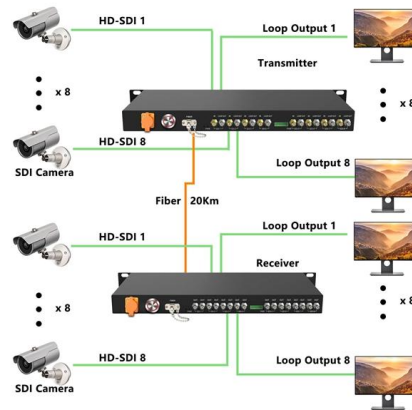


Living near EMFs

Is living next to a substation safe? Electricity substations are an important part of our power infrastructure, but there are concerns around whether it is safe to live close

27 Pros And Cons Of Living Near Power Lines

Ultimately, the decision to live near power lines should be based on a thorough assessment of your priorities, lifestyle, and comfort level with the



Living Under Power Lines: Essential Health and Safety

Discover essential health and safety insights for working near power lines. Learn practical tips to implement safety measures and protect your workforce effectively.



Is living next to a substation safe?

Is living next to a substation safe? Electricity substations are an important part of our power infrastructure, but there are concerns around whether it's safe to live close



Is Living Near Power Lines Dangerous? Critical Health

Discover the potential health risks of living near power lines and learn practical safety measures to protect yourself and your workplace. Read more now!



Should I Buy a House Near Power Lines?

Should you buy a house near power lines? We delve into how power lines impact property valuations and resale value. Discover why people are afraid





Business Standard

Hier sollte eine Beschreibung angezeigt werden, diese Seite lässt dies jedoch nicht zu.



Living near Power Lines

Living near power lines can increase your risk for cancer, depression, and many other disorders. So what is the safe distance to live near power lines?

How close is too close when living near transmission

Many people would wonder, when looking at homes near high voltage power lines, if those can be bad for you, or even cause cancer. Properties



Kaggle

" 'next',n", " 'work'],n", " ['probably',n", " 'time',n", " 'favorite',n", " 'movie',n", " 'story',n", " 'selflessness',n", " 'sacrifice',n", " 'dedication',n", " 'noble',n", " 'cause',n", " 'preachy',n", " 'boring',n",



Is It Safe to Live Near a Power Pole?

For the vast majority of people, yes, it's safe to live by a utility pole. Living near a standard residential power pole does not come with proven health risks, extreme



27 Pros And Cons Of Living Near Power Lines

Conclusion Living near power lines presents a complex mix of pros and cons that must be carefully weighed before making a decision. On the one

Is Living Near Power Lines Dangerous? Unlocking

Discover whether living near power lines poses health risks. Get practical safety tips and advice for protecting yourself and your workplace environment.



Is It Safe to Live Near an Electrical Box? Unveiling the Truth

Living in a house close to an electrical box, also known as a power distribution box or transformer station, often raises concerns among homeowners regarding safety, health implications,



The Truth About Living Near Power Lines

Living near power lines is something most of us don't even think twice about. We live in an age of technology where social media and automation



Living by a Substation , Thomas Edison Electric

Understanding What a Substation Does An electrical substation is where voltage is converted from high to low, or the reverse, as electricity travels from power plants to homes and businesses. These

Advice about electromagnetic fields, UK Power Networks

Living next to electrical equipment Sometimes customers are concerned about living close to electrical equipment and the Electric and Magnetic Fields (EMF)



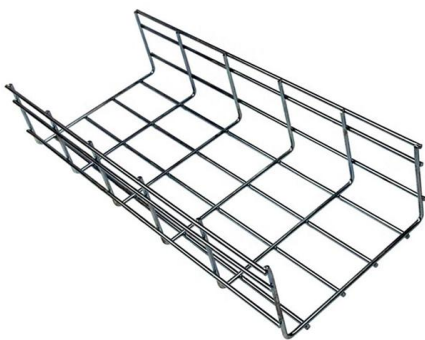
Is It Dangerous to Live by Power Lines?

Get the scientific consensus on power lines and health. Understand electromagnetic fields, correlation vs. causation, and effective distance mitigation.



Electricity and health , ARPANSA

Electromagnetic fields (EMF): Waves of electric and magnetic energy moving together. Extremely low frequency (ELF) electric and magnetic fields: exist

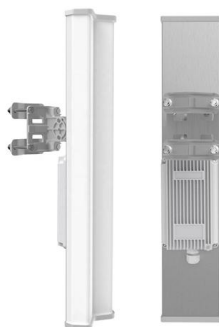


How Close Is Too Close to Power Lines?

Studies on the effects of living within close proximity to power lines are mixed. If you're concerned, you should contact your power company for an

Is it Risky to Live Near Power Lines? , Health & Safety

The Advantages of Living Near High Voltage Power Lines Now that we know about the possible dangers that one might face while living near high



Scientists Reveal the TRUTH About Living Near Power

We dive into what the research really says--and whether you need to be concerned about living near high-voltage power lines.



Living Near Power Stations and High-Voltage Lines:

In this article, we will analyze the impact of living near high-voltage power lines, discuss scientific research, regulatory restrictions, and explore architectural and



Living near overhead lines? Read more about Electric

Living near EMFs Living or buying near overhead lines Is living near an overhead line safe? Overhead lines are an important part of our power infrastructure, but there

Living Near Power Lines - Is It Dangerous?

I get asked all the time if living next to, or near, a power line is dangerous. This is totally understandable for a few reasons. First, a large portion



Is it bad to live next to a power transformer?

In this comprehensive analysis, we delve into the potential risks and benefits associated with residing near power transformers. We will explore electromagnetic fields, noise pollution,



Health Risks of Living Near an Electric Substation

Ever think about living near electric power station is safe. What might be the possible health risks? What are the main causes that lead to health risks near power



Contact Us

For datasheets, pricing, or custom high-speed optical interconnect solutions, please visit:
<https://syropy.com.pl>