

# **Location of the apartment s electrical distribution box switch**





## Overview

---

The breaker box in an apartment is usually installed in the bedroom closets or the walls in the hallway. To find it quickly, look for a rectangular gray metal box about the size of a medicine cabinet, often positioned close to. It will help you troubleshoot when you need to reset your circuit after a strong electrical surge comes to your apartment. The location of light switches and sockets for electrical appliances, the correct laying of electrical wiring in the apartment - a guarantee of not only comfort in everyday life, but also a guarantee of safety against short circuits and fires. The electrical panel, often referred to as a fuse box or breaker box, is the central distribution point for all electricity entering your apartment. This metal enclosure houses the safety mechanisms that automatically shut off power to a circuit when an overload or short circuit occurs, preventing. Upgrading or replacing a home's outdated electrical switchboard with newer electrical equipment is a major electrical project that requires careful planning and should only be done by qualified electricians.



## Location of the apartment's electrical distribution box switch

---



### Distribution Box Installation: A Complete Guide to Safe

The distribution box, often referred to as a breaker box, fuse box, or electrical panel, is a critical component of any electrical system. It acts as the central hub for

### Where is the best place to put a Electrical distribution box?

In addition, the location should be close to the main electrical power source so that the box can easily be connected to it. When choosing the best place to put a Electrical distribution



### The Ultimate Guide to Distribution Box Types

Discover the key types of distribution boxes with NUOMAK's comprehensive guide. Learn about Main Distribution Boards (MDB), Consumer Units, Transfer



### Laying electrical wiring in an apartment: parsing

Almost all appliances in a modern apartment are powered by electricity. The location of light switches and sockets for electrical appliances, the correct laying of



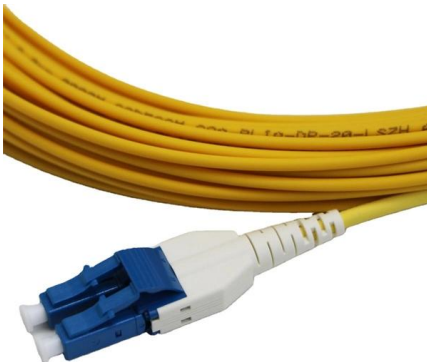
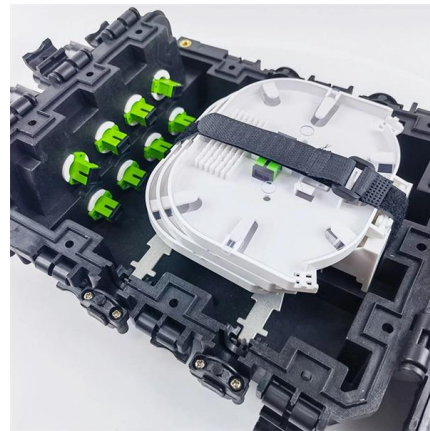
### Where Should You Install A New Switchboard?

Safety Switches - Individual safety switches allow you to easily isolate high-power circuits like air conditioners, water heaters, and pool pumps for



### A Step-by-Step Guide to Wiring an Electrical Panel Box

Find out how to properly wire an electrical panel box with a comprehensive diagram and step-by-step instructions.



### Main switch box: Definition, working method

A main switch box is essential to your home's electrical system. The central hub manages and distributes your house's electrical circuits. It also



## Distribution of Electricity in Multi-Storey Building

In figure 5.7, two alternative layouts for the distribution of electricity to flats have been illustrated. According to the method shown in first the layout, a

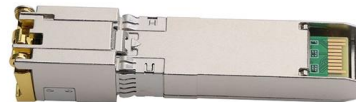


### Where is fuse box in apartment?

The first thing you need to know is where the fuse box is located in your apartment. They are often found in bedroom closets, or on the wall in hallways. The standard color of the door leading to the box is

### Where Is the Distribution Box Located and How to Find It

When your power goes out or a circuit breaker trips, knowing exactly where your distribution box is located can save you time, money, and frustration.



### The Complete Guide to Distribution Box: Installation, Types & More

The main switch, or main breaker, controls the entire electrical supply to the distribution box. This large switch allows you to disconnect all power to the building during emergencies or



## Laying electrical wiring in an apartment: parsing diagrams + step by

With proper distribution of the electrical network inside the apartment, they should be located on each branch of the network line. Thus, junction boxes should be in each of the living rooms, corridor, kitchen.

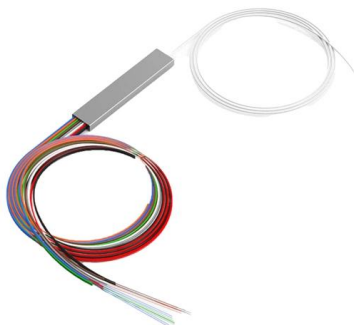


## How Electrical Wiring Of Apartment Building » Wiring

This article will explain how electrical wiring works in an apartment building, so you can make sure all of your tenants receive safe and reliable

## Where Should You Install A New Switchboard?

Ready to upgrade your switchboard? Learn where to position a new electrical switchboard when upgrading your home for



## Understanding Your House's Electrical Panel: A Visual

Understanding the electrical panel in your house is essential for homeowners to ensure the safety and functionality of their electrical systems. The electrical panel,



## Electrical Panel Location and Installation: Clearance,

Ideally, you should install a breaker box in an unfinished basement or garage, but you can place them inside any room that meets the NEC



## Where Is the Fuse Box in My Apartment?

Apartment buildings often conceal the electrical panel for aesthetic reasons, so the location can differ significantly from what is common in a single-family house. The most frequent

## Understanding Distribution Boxes: Your Guide to Power

What are Distribution Boxes and Their Importance? What are Distribution Boxes and Their Importance? Distribution boxes, or electrical junction



## How to confirm whether the installation location of the

The electrical distribution box plays a vital role in the power system. It is responsible for distributing electricity to various circuits and equipment.



## What is the Internal Structure of The Distribution Box

Learn about the internal structure of a distribution box, its components, functions, and key types. Understand its role in electrical systems



## Electrical Switch Box Relocation: A Comprehensive Guide

This article will explore the reasons for moving electrical switch boxes, the basic procedure involved, potential challenges and solutions, and emphasize the

## Where Is the Fuse Box in My Apartment?

The electrical panel, often referred to as a fuse box or breaker box, is the central distribution point for all electricity entering your apartment. This metal enclosure houses the safety



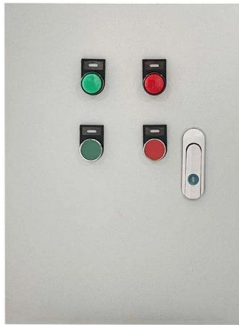
## A Step-by-Step Guide to Wiring an Electrical Panel Box

An electrical panel box, also known as a breaker box or a distribution board, is a crucial component of any electrical system. It serves as a central hub for



## Electrical Panel Location and Installation: Clearance,

Conclusion Understanding the best electrical breaker box location in your house is extremely important because the circuit breaker box controls the



### Where Is the Breaker Box in Apartment?

To locate the main breaker in an apartment, you can ask your landlord or the apartment owner. If asking your landlord proves difficult or too

## Contact Us

---

For datasheets, pricing, or custom high-speed optical interconnect solutions, please visit:  
<https://syropy.com.pl>