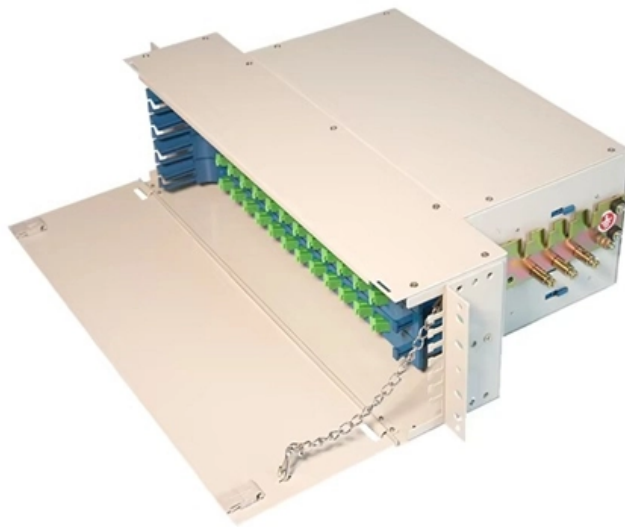
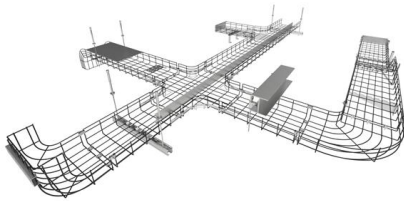


Low-voltage busbar PT





Low-voltage busbar PT



What Is a Low Voltage Busbar and Its Benefits?

Low voltage busbars are used in systems where the voltage level is below 1000 volts. These busbars serve as a centralized hub for electrical power distribution, efficiently transmitting



Understanding Low Voltage Busbar: Benefits, Types, and Applications

One of the primary advantages of low voltage busbars is their efficiency in power distribution. Unlike traditional wiring systems, busbars minimize the amount of electrical resistance,

Low Voltage Switchgear Design for US and EU Markets: Busbar

Low Voltage Switchgear Design: How Better Busbar Systems and Smarter Current Ratings Improve Reliability In low-voltage power distribution, the cabinet is never just a cabinet, and



SIVACON

Low-voltage systems by Siemens ensure consistent, highly efficient and reliable low-voltage power distribution - from the power feed-in to the consumers.



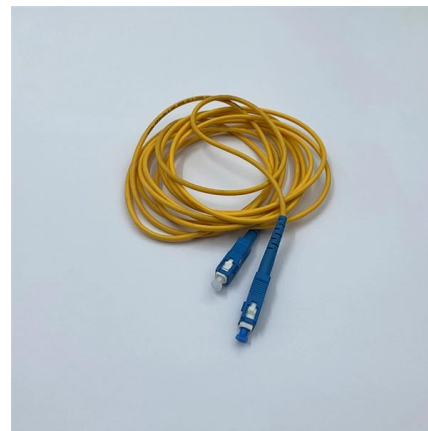
High Voltage Routing for Electric Vehicles

We also design and develop brackets in plastic, spring steel, or combination assemblies, with or without metal anti-creep inserts and channels for low-voltage



Germany Low Voltage Rated Busbar Trunking Systems Market

The global market overview of the Germany Low Voltage Rated Busbar Trunking Systems Market provides a unique perspective on the key trends influencing the industry worldwide and in major



Design and installation of low voltage busbar trunking

Cable jointer not required. Busbar trunking systems may be dismantled and re-used in other areas. Busbar trunking systems provide a better





Distinguishing High and Low Voltage Busbars

Low voltage busbars have smaller cross-sections with different current density considerations. Insulation Level: High voltage busbars require higher-grade insulation materials for safe operation at elevated



DMC Low-Voltage Insulators for New Energy Power Distribution, Busbar

Kirish With the rapid development of photovoltaic power generation and energy storage systems, the reliability and safety of low-voltage power distribution equipment have become

Section 7 Switchgear and controlgear assemblies

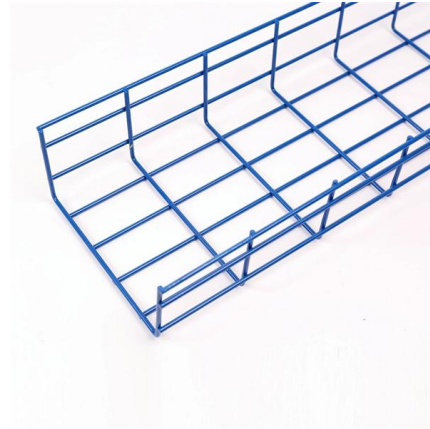
7.1 General requirements 7.1.1 Switchgear and controlgear assemblies and their components are to comply with the following standards, as appropriate for the nominal voltage, and amended where



Switchboard

IEC 61439 'Low-voltage switchgear and controlgear assemblies', specifies standard arrangements of switchboard (call forms of internal

Explore products Optimize operations and maintenance with integrated digital solutions and low-voltage systems for power distribution. Our busbar trunking

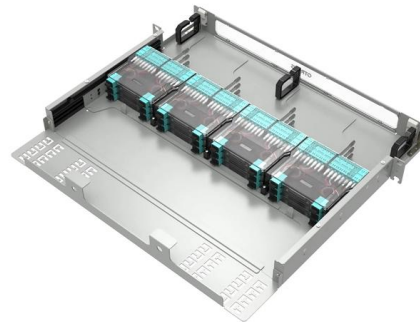


Busbar

A busbar is defined as an electrically conductive strip or bar used to distribute power to multiple circuits in parallel. Busbar can also be used as a common tapping point for multiple ground or neutral terminals.

Low Voltage Bus Bars for Switchgear: Tailored Electrical Conduits for

Low Voltage Bus Bars for Switchgear play a pivotal role in efficient power distribution within electrical systems. By offering customized solutions designed for compatibility, safety, and optimal



Low Voltage Busbar Trunking Guide , PDF , Electrical

This document provides guidance on low voltage busbar trunking systems according to BS EN 61439-6. It defines busbar trunking systems and components, and



IEC 61439 Busbar Standard: A Guide to Low-Voltage

This standard covers busbars used for low-voltage assemblies, power distribution, photovoltaic power systems, and electrical energy control. The IEC



SRNE DC Busbar Box 300a Low Voltage Battery Busbar Box Extend

SRNE DC Busbar Box 300a offers reliable low voltage battery management, extending ESS working hours with IP30 protection. Ideal for off-grid and hybrid systems., Alibaba

Busbars

ABB busbar systems enable safe and easy cross-wiring of miniature circuit breakers, residual current devices and other Modular DIN-Rail products.



Section 7 Switchgear and controlgear assemblies

7.6.1 Low voltage assemblies where the rated voltage between conductors or to earth exceeds 55 V a.c. or 250 V d.c. are to be of the deadfront or enclosed type. High-voltage assemblies are to be of the



IEC 61439-1 and IEC 61439-6 Testing Procedure and

This three-part webinar series will take a deep dive into IEC 61439-1 and 61439-6 that defines the service conditions, construction requirements, technical



DMC Low-Voltage Insulators for New Energy Power Distribution, Busbar

???????? With the rapid development of photovoltaic power generation and energy storage systems, the reliability and safety of low-voltage power distribution equipment have become

Switchgear - Complete Deep Explanation (Basic to Advanced)

Switchgear - Complete Deep Explanation (Basic to Advanced) What is Switchgear? Switchgear is a combination of electrical devices used to: Control electrical power, Protect electrical equipment



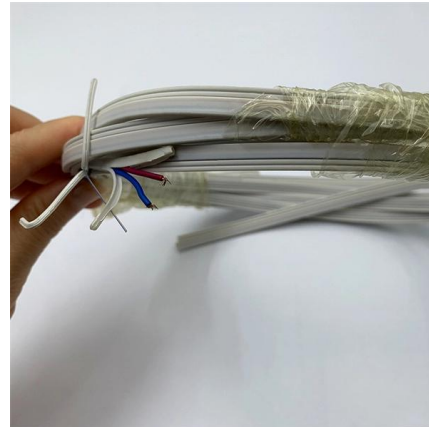
Global Info Research focusing on Industry Analysis, Market Research

Global Info Research owns large basic databases and expert resources Global Info Research owns large basic databases and expert resources, focusing on Industry Analysis, management consulting, IPO



DMC Low-Voltage Insulators for New Energy Power Distribution, Busbar

Introduction With the rapid development of photovoltaic power generation and energy storage systems, the reliability and safety of low-voltage power distribution equipment have become



Guide to Low Voltage Busbar Trunking Systems Verified to BS EN

Busbar trunking systems (BTS) are better suited for power distribution than cables when a low magnetic induction is required, as the BTS construction facilitates the optimum arrangement of conductors to

Low Voltage Bus Bars for Switchgear

What voltage ranges do your low voltage bus bars cover? Our low voltage bus bars are designed for applications up to 1000V, with various current ratings available.



POWER BUSBAR SOLUTION

POWER BUSBAR SOLUTION TE Connectivity's busbar solutions are typically made from aluminum or copper with electrical distribution applications in mind, with the ability to transmit high current power



Contact Us

For datasheets, pricing, or custom high-speed optical interconnect solutions,
please visit:

<https://syropy.com.pl>