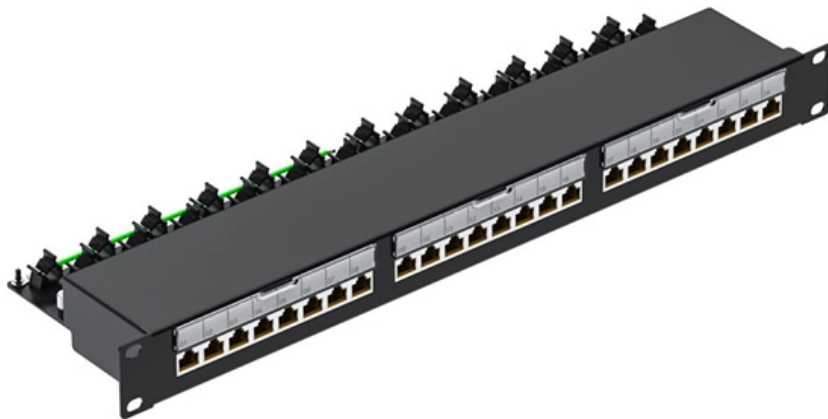


# **Make a right angle in the middle of the cable tray**





## Make a right angle in the middle of the cable tray

---



### Justification Settings for Cable Tray

Horizontal Justification. Aligns the edges of cable tray sections horizontally, using the center, left, or right side of the cable tray as a reference.  
Horizontal Offset. Specifies an offset between where you click

### Cable tray horizontal bends , Information by Electrical Professionals

We are installing tray around a clarifier at a WWTP and about every 20 feet we need around 10 degrees of bend. NEMA V2 does not address this that I can find. I spoke with factory tech



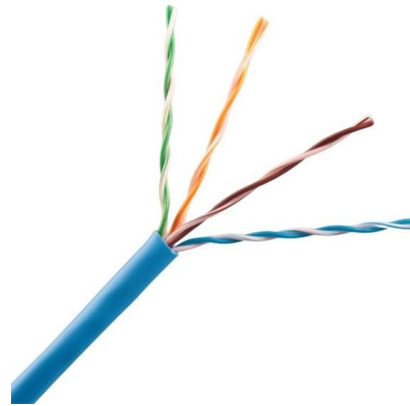
### Connecting Cable Trays: Your Guide to Secure and

Learn common methods for connecting cable trays safely and efficiently. Our guide covers splice plates, quick-connects, and key tips for secure



### Mastering Cable Tray Installation , Step-by-Step Guide for a Seamless

Learn how to install cable trays correctly. Get the ultimate step-by-step guide on setting up a seamless and reliable cable management system.



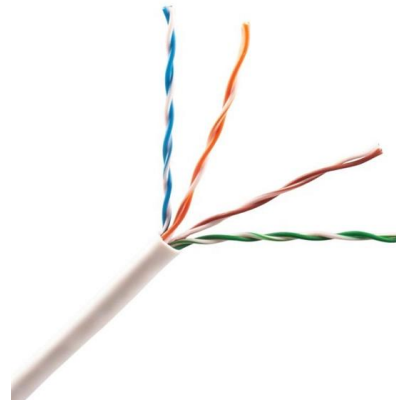
### Setting Up Cable Tray in Revit MEP: A Step-by-Step Guide

Walk through placing cable tray in Revit MEP--loading fittings, setting routing preferences, drawing runs across floors, and resolving clashes with ducts and conduit.



**directory-list-2.4.txt/directory-list-2.4.txt at main**

Customer stories Events & webinars Ebooks & reports Business insights GitHub Skills



### How to make a 0-90° vertical angle for cable trays?

Elbow joint RVS is pushed inside the cable tray and attached with the included screw set. Elbow joint RVS can be used to change a cable tray's





### Easy step to make 45 degree offset cable tray/Pipe and Air duct

How to make 45°degree OFFSETS cable tray (50mm depth) Practical Tutorial 2 Calculating a 45 degree offset piping system / Tradestutor



### Let's talk Cable Tray Offsets (not basket tray)

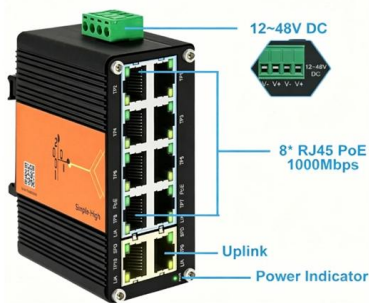
Let's talk Cable Tray Offsets (not basket tray) So, I've done a few cable tray offsets in my time, but I just wing it every time. I would like to learn the logic in determining lengths for offsets, both sideways or

### Make a 90 Bend in Electrical Cable Tray

The Easy Guide to How to make a 90 electrical cable tray bend to measurement of your choice. Great if you are new or just forgot how to do it, this easy



10 Ports PoE Switch 12~48V DC  
Booster Function



### How to align cable tray into a sloping framing or ceilings in Revit

Is it possible to align the cable tray with a sloping framing or ceilings in Revit? Use the following steps to adjust cable trays with sloping elements using align option: If the cable tray is

### Best Practices for Installing Cables in Trays



Quick Installation Checklist (Key Steps) Cable tray cable installation generally follows these steps: Inspect cables before

8-Port PLC Fiber Splitter Box

12-Port SC Fiber Splitter Box

Size: 235\*215\*75mm  
Material: ABS, IP65,



### **cable tray and trunking for electricians (Page 1) / Help**

By applying the following formula you can quickly find the size of cut out section that you need to cut out of the side of the cable tray, or gutter-type

### **Cable Tray Technical Guide A practical guide to product selection and**

A practical guide to product selection and installation This guide for engineers and installers has been developed by ABB as a practical reference regarding cable tray characteristics, installation, and



### **Trunking Cutting Techniques Guide , PDF**

The document provides instructions for forming various bends and joints in electrical trunking and cable trays. It describes: 1) How to mark and cut a right-angle



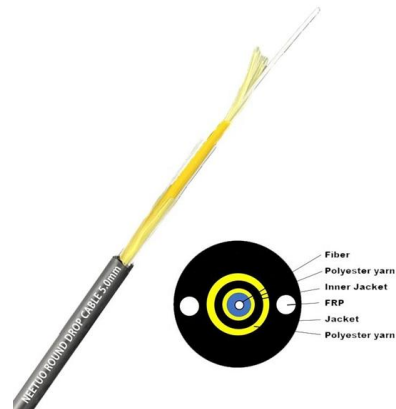
## HOW TO BEND 90 DEGREE OF CABLE TRAY BASIC TUTORIAL

They are especially useful in situations where changes to a wiring system are anticipated, since new cables can be installed by laying them in the tray, instead of pulling them through a pipe.



### Best practice guide to cable ladder and cable tray

Cable ladder and cable tray systems The following recommendations are intended to be a practical guide to ensure the safe and proper installation of



### CABLE TRAY SYSTEMS GUIDE

The total load supported by the cable tray, uniformly distributed. This will be the combined weight of all of the cables or tray contents, any environmental loads (snow, ice, dust) and any concentrated static



### Solved: Cable Tray Elbow

Solved: Good day, In need to create an elbow that starts at a right angle and that has the ability adopt the angle of the routing of the cable tray.



## Complete cable tray manual for electrical engineers and

A spread sheet based wiring management program may be used to control the cable fills in the cable tray. While such a system may also be used for controlling



### How to make an adjustable angle for a cable tray?

The adjustable corner piece SRS is pushed inside the cable tray and attached with the included screw set. The range for adjustable corner piece SRS is 0-75°.



### How to Make an Internal Bend in Steel Cable Tray Using a Crimping

You can buy a manufactured 90 degree bend or make one on a cable tray bending machine but in this video I show you how to make one using a metal bar.



### People Inc.

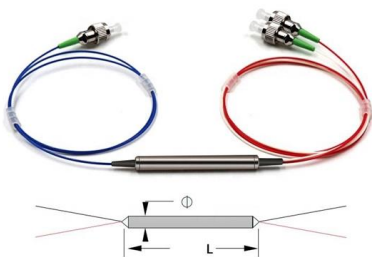
People Inc. is America's largest digital and print publisher. Learn about career opportunities, leadership, and advertising solutions across our trusted brands

### Best Practice Guide to Cable Ladder and



## Cable Tray Systems

This publication is intended as a practical guide for the proper and safe\* installation of cable ladder systems, cable tray systems, channel support systems and associated supports.



### How to make a 0-90° vertical angle for cable trays?

How to make a 0-90° vertical angle for cable trays? Elbow joint RVS is pushed inside the cable tray and attached with the included screw set. Elbow joint RVS can be

### How to Calculate Size of Cut to Set Cable Tray

By applying the following formula you can quickly find the size of the cut-out section that you need to cut out of the side of the cable tray, or gutter-type



## Contact Us

---

For datasheets, pricing, or custom high-speed optical interconnect solutions, please visit:  
<https://syropy.com.pl>