

# **Mali SFP Optical Module 25G**





## Mali SFP Optical Module 25G

---



### Cisco SFP-25G-LR-S Compatible SFP28 Module,

Cisco SFP-25G-LR-S Compatible SFP28 Module, 25Gbps Single Mode Fiber (SMF), 10km (6.2mi), LC Connector, 1310nm, MSA 25 Gigabit Optical Transceiver

### Wholesale SFP Modules: The 2025 Distributor Guide to

In this guide, we will reveal the best-selling module types you should stock in 2025 and how to succeed in the wholesale optical business.

Figure 1: Wolon optical



Integrated Aluminum Alloy Die Casting



Durable and Secure Metal Screws

### SFP28 Optical Transceiver Modules for Sale (25G) , Cables on Demand

SFP28 Optical Transceiver Modules (25G-SR/LR) Buy 25G SFP28 Optical Transceiver Modules by Amphenol XGIGA Factory-Direct at Cables on Demand! Optimized for data rates up to 28.0 Gbps

### Generic sx sfp module 1000BASE-SX 1310nm 2km MMF

The WOLON 1310nm 2km SX SFP Module is a specialized optical transceiver designed to extend Gigabit Ethernet connections beyond the standard 550m limit of traditional 850nm modules.



### SFP+ Cables

Fiber Optical Cable OM3 Duplex OM5 Duplex OS2 Simplex MPO-MPO Extension QSA (40G/100G) SFP+/QSFP Extension Loopback SFP+/SFP28 Loopback Fiber



### 25G SFP28 Optical Transceiver Modules , FiberMall

FiberMall offers 25G Optical Transceiver Modules, which is compliant with the Multi-Source Agreement using Small Form-Factor Pluggable (SFP28) footprint.



### 25G SFP+ Optical Transceiver

T1-SFP-25G-SR is an SFP28 module for duplex optical data, and communications up to 25.78Gbps, with an SFP+ 20-pin connector to allow hot plug capability. Digital diagnostic functions are available





### **Transceiver Optical Module Cisco 1.25G SFP 1430nm CWDM**

CWDM 1.25G SFP optical transceiver is a versatile network component. Operating within the 1270-1610nm wavelength range, the single fiber SFP CWDM transceiver module supports data rates of

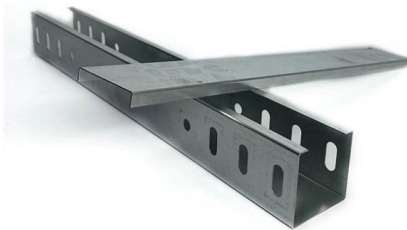


### **Generic sx sfp module 1000BASE-SX SFP Transceiver 850nm 550m**

Buy high-performance SX SFP Module at factory price. This 1.25G 1000BASE-SX SFP Transceiver operates at 850nm over multimode fiber up to 550m. MSA compliant, fully tested for Cisco, Juniper,

### **Wholesale Optical Transceivers Module , 100G**

Shop high-speed optical transceivers from Unitekfiber. We offer 100% compatible 40G, 100G, and 400G QSFP-DD modules for data centers. Expert technical



### **Demystifying SFP28: The Essential Guide to 25G**

SFP28 is a 25G transceiver module for fast, efficient data transfer in modern networks, offering high speed, compatibility, and energy savings.



## SFP+ Optical Transceiver Modules (10G-SR/LR)

Amphenol SFP Optical Modules o SFP+ Optical Modules from Cables on Demand are Now Available in both Short Range (SR) Multimode and Long Range (LR)



## What is SFP Port? Everything You Need to Know

What is an SFP port? The SFP port also refers to a Small Form-factor Pluggable port. It is a compact mechanical slot that accepts an SFP module

## 25G SFP28 LR Rx 10km Industrial Single-Receiver Optical Module

Description The Gigalight 25G SFP28 LR Rx 10km industrial single-receiver optical module (GSSR-SPO250-LRT) is designed for 25GBASE-LR Ethernet and CPRI/eCPRI Deep Packet Inspection



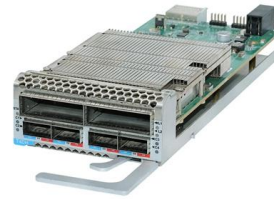
## SFP-25G-LR-BXD1-I 02314LBU Huawei Optical Transceiver

Optisk transceiver, SFP28, 25G, BIDI Single-mode Module (TX 1330nm/RX 1270nm, 10km, LC)

## 25GE SFP28 Optical Modules



25GE SFP28 Optical Modules SFP-25G-LR  
 SFP-25G-SR (02311KNR) SFP-25G-ESR SFP-25G-  
 LR-BXU1-I SFP-25G-LR-BXD1-I SFP-25G-eLR-  
 BXD1-I SFP-25G-eLR-BXU1-I SFP-25G-SR



**LINK-PP LS-MM8525-S1I - 25GBASE-SR 25 Gbps Multimode Optical**

By leveraging multimode fibre (MMF) instead of more expensive single-mode fibre for short-distance links, network operators can upgrade to 25G bandwidth with fewer infrastructure

**25G SFP28 SR Transceiver: High-Performance 300m**

Power your short-range connections with Innoptical's 25G SFP28 SR transceivers. Experience reliable 300m transmission with low power consumption and



Ordering information

| NO.  | 1                   | 2                     | 3                   | 4                   | 5                     | 6                   |
|--|---------------------|-----------------------|---------------------|---------------------|-----------------------|---------------------|
| Model  | SFP-25G1            | SFP-25G2              | SFP-25G4            | SFP-25G8            | SFP-25G16             | SFP-25G32           |
| Product name                                 | Patch Panel         | Patch Panel           | Patch Panel         | Patch Panel         | Patch Panel           | Patch Panel         |
| Illustration                                 |                     |                       |                     |                     |                       |                     |
| HU   | 1                   | 2                     | 4                   | 1                   | 2                     | 4                   |
| Maximum number of ports                      | 144                 | 288                   | 576                 | 144                 | 288                   | 576                 |
| Product size (including module and assembly) | 482.87*311*114 (mm) | 482.87*311*198.1 (mm) | 482.87*311*177 (mm) | 482.87*311*144 (mm) | 482.87*311*198.1 (mm) | 482.87*311*177 (mm) |
| Standard color code                          | RAL9005             | RAL9005               | RAL9005             | RAL9005             | RAL9005               | RAL9005             |

**25G SFP28 Optical Transceivers , Transceiver Module**

FS 25G SFP28 optical transceiver solutions offer a wide variety of high-density and low-power connectivity options for 25 Gigabit Ethernet, telecom, and data center.



### **25GBASE-LR SFP28 1310nm 10km Transceiver Datasheet , FS**

This module is designed to operate over singlemode fiber systems using a nominal wavelength of 1310nm. The electrical interface uses a 20 contact edge type connector. The optical interface uses



### **SFP28 25G SR Optical Modules: High-Performance Network Solution**

Explore the benefits of SFP28 25G SR optical modules for fast, cost-effective connectivity in data centers, enterprise networks, and 5G. Upgrade your network with FS.

### **MSA-Compliant SFP-25G-LR-S SFP28 Module, 25Gbps**

Enhance the networking infrastructure with this MSA-compatible 25GBASE-LR optical transceiver, ensuring reliable performance and seamless connectivity at



### **Differences Between Optical Modules SFP, SFP+, CFP, XFP, QSFP**

At present, 40G optical module and 100G optical module price is too high, power consumption is too large, and 10G optical module rate can not meet the network demand, so 25G



## Haile SFP-GE40-SM1310-A 1.25G Gigabit Single Fiber Optical Module

Product Overview The Haile SFP-GE40-SM1310-A is a high-performance Gigabit single-mode single fiber optical module designed for reliable long-distance data transmission. Operating at 1.25Gbps,



## 25G Multi-Mode Optical Module

SFP28 transceiver that supports 25G connections up to 100 m using multi-mode fiber with a duplex LC UPC connector.

## 25G optical modules for your network

A practical guide to selecting and implementing 25G optical modules based on network needs and equipment compatibility.



## Contact Us

---

For datasheets, pricing, or custom high-speed optical interconnect solutions, please visit:  
<https://syropy.com.pl>